

PUBLIC LAND SURVEY MONUMENT RECORD

TYPE OF MONUMENT: HARRISON
 ADAMS COUNTY COORDINATES, NAD 83 (2007)

N. 103050.228

E. 546868.560

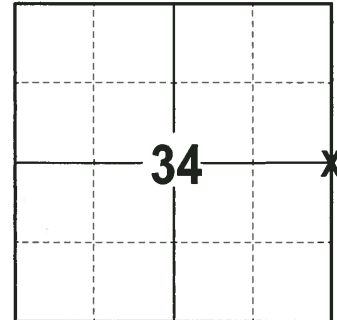
ELEVATION- --- DATUM ---

FIELD WORK DATE: 06/29/2017

BASIS FOR MONUMENT LOCATION

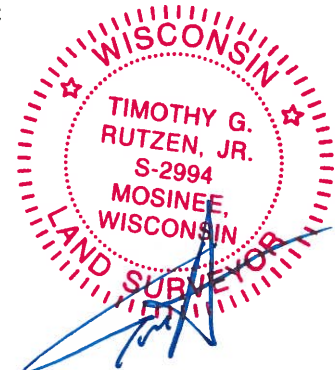
1975 - PLS 878 REPLACED RAILROAD SPIKE BELIEVED TO BE SET BY MIDSTATES WITH HARRISON MONUMENT. ACCEPTED CORNER LOCATION AFTER ANALYZING THE SURVEY OF THE FOLLENDORF PROPERTY. SET 3 WITNESSES, DISTANCES ARE TO NAIL AND DISC.

2017 - PLS 2994 FOUND HARRISON MONUMENT 6" BELOW THE ROAD SURFACE AND 1 WITNESS. THE MONUMENT AGREES WITH THE EXISTING WITNESS. ACCEPTED HARRISON AS THE CORNER LOCATION. SET 4 NEW TIES AND RE-MEASURED TO THE EXISTING WITNESS.



LOCATION
 (INDICATE CORNER BY "X")

SEAL:



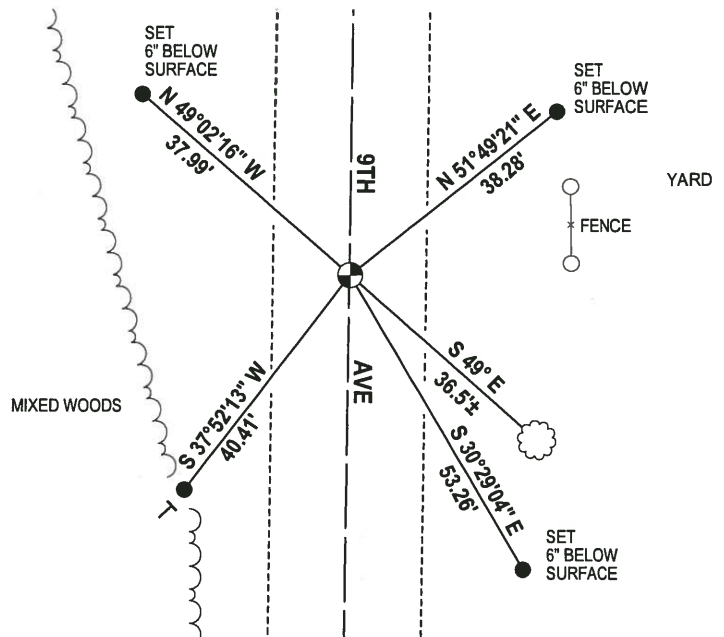
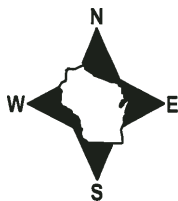
DATA SHOWN HERE ON THIS TIE SHEET IS CORRECT AND COMPLETE TO THE BEST OF MY KNOWLEDGE AND BELIEF.

PROFESSIONAL LAND SURVEYOR

DATE 7-14-17

- TIE SKETCH

NOTE: THE CORNER FALLS 0.5± EAST OF THE CENTERLINE OF 9TH AVE.



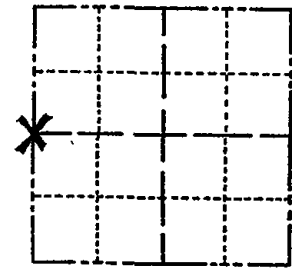
- 3/4" x 18" IRON REBAR SET, 1.50#/FT
- ⊙ HARRISON FOUND
- VINYL "T" POST
- ☼ FOUND WITNESS TREE

ADAMS COUNTY

Survey Monument Record

TYPE OF MONUMENT: Harrison Standard
STATE PLANE COORDINATES: N
E
ELEVATION - M.S.L. DATUM:
THETA ANGLE:
FIELD BOOK: PAGE

CORNER NO. 218
SECTION 35
TOWN 14
RANGE 6



LOCATION (Indicated by 'X')

SEAL:

BASIS FOR MONUMENT LOCATION

(Use reverse side if necessary)

Show info such as: History of corner, with reference to Vol. and pg. dates, surveyor; exact description of monument replaced; if location computed, by taped or EDM traverse; landowner remarks, etc.

Replaced railroad spike believed set by Midstates. Accepted location after analyzing their survey of the Follendorf property.

- CORNER O.K. 10-9-76 GR-SS
CORNER OK 12-15-81 SK-BW
" " 2-6-86
" " 10-22-90 JG-SS
2-GONE, 2-NEW, CSR OK, 12/6/95 JG-SS
ALL OK 3-20-01, JG
OK, 11-10-06-JG-SS



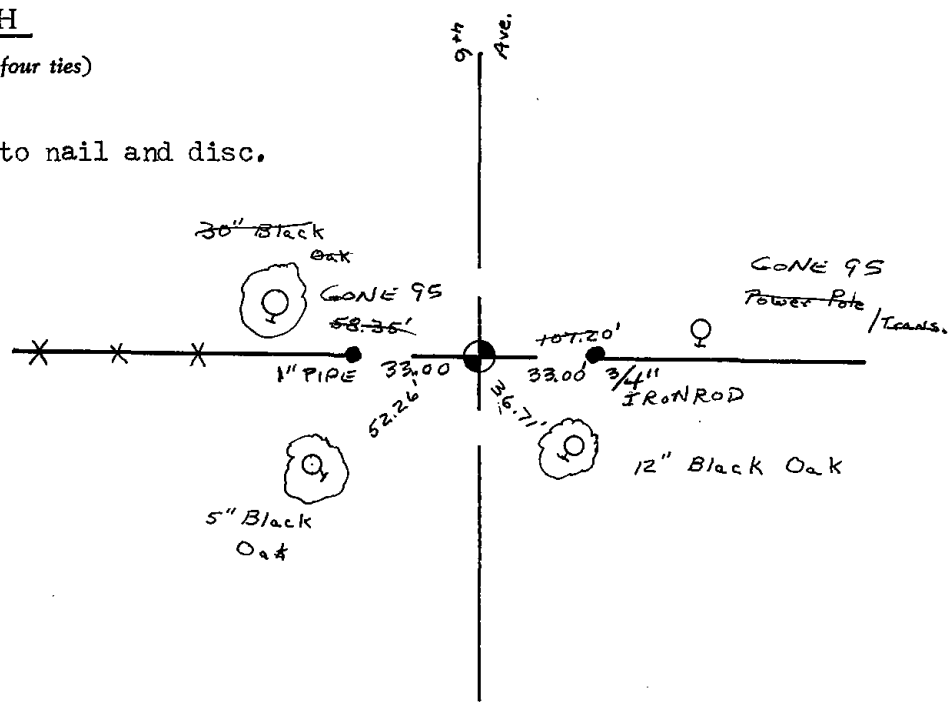
CERTIFIED CORRECT:

Signature of Anthony B. Kiedrowski
Registered Land Surveyor
DATE: 1/3/75

TIE SKETCH

(Show at least four ties)

Ties are to nail and disc.



ADAMS COUNTY

CORNER NO. 218

Survey Monument Record

SECTION 35

TYPE OF MONUMENT: Harrison Standard

TOWN 14

STATE PLANE COORDINATES: N _____

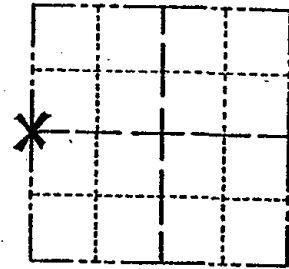
RANGE 6

E _____

ELEVATION — M.S.L. DATUM: _____

THETA ANGLE: _____

FIELD BOOK: _____ PAGE _____



LOCATION
(Indicated by 'X')

SEAL:

BASIS FOR MONUMENT LOCATION

(Use reverse side if necessary)

Show info such as: History of corner, with reference to Vol. and pg. dates, surveyor; exact description of monument replaced; if location computed, by taped or EDM traverse; landowner remarks, etc.

Replaced railroad spike believed set by Midstates. Accepted location after analyzing their survey of the Follendorf property.

CORNER O.K. 10-9-76 GR-SS

CORNER O.K. 12-15-81 SK-BW

" " 2-6-86

NEW TIES 11--09 MC+RP

ALL OK 1-17-11 MS,SS



CERTIFIED CORRECT:

Anthony B. Kiedrowski
Registered Land Surveyor

DATE: 1/3/75

TIE SKETCH

(Show at least four ties)

Ties are to nail and disc.

