

33
SECTION

14
TOWN

06
RANGE

ADAMS COUNTY

COUNTY CORNER NO: 127

ROMPORTOL ID: 41406330000

PUBLIC LAND SURVEY MONUMENT RECORD

TYPE OF MONUMENT: HARRISON
ADAMS COUNTY COORDINATES, NAD 83 (2007)

N. 100153.660

E. 541559.925

ELEVATION- _____ DATUM _____

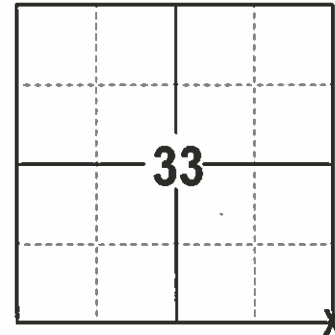
FIELD WORK DATE: 2/28/2017

BASIS FOR MONUMENT LOCATION

1976- PLS 922 SET A HARRISON. AT LOCATION WHERE A FOUND 8" X 8" X 16" STONE WAS LAYING ON TOP OF THE GROUND AT FENCE CORNER. THIS STONE WAS SET BY COLUMBIA COUNTY SURVEYOR C.E. CORNING IN 1920 IN WORKING WITH ADAMS COUNTY SURVEYOR A.J. BARRETT. SEE COLUMBIA COUNTY SURVEY RECORD BLUE PRINT NO. 162, MONUMENTED FENCE CORNER AS STONE WAS APPARENTLY REMOVED. FIT TRANSIT-TAPE TRAVERSE OF SECTION GOOD.

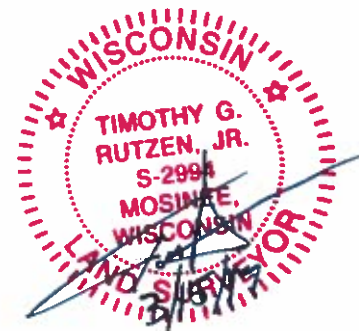
1998- PLS 1321 FOUND A HARRISON AND 1 EXISTING TIE. SET 3 NEW TIES AND REMEASURED TO THE FOUND TIE.

2017 - PLS 2994 FOUND A HARRISON 3" ABOVE THE SURFACE AND 3 EXISTING TIES (2 GOOD AND 1 DISTURBED). THE HARRISON AGREES WITH THE 2 TIES. ACCEPTED HARRISON, REMEASURED THE 2 TIES, LOCATED A FOUND PROPERTY IRON AND RESET THE DISTURBED TIE.



LOCATION
(INDICATE CORNER BY "X")

SEAL:



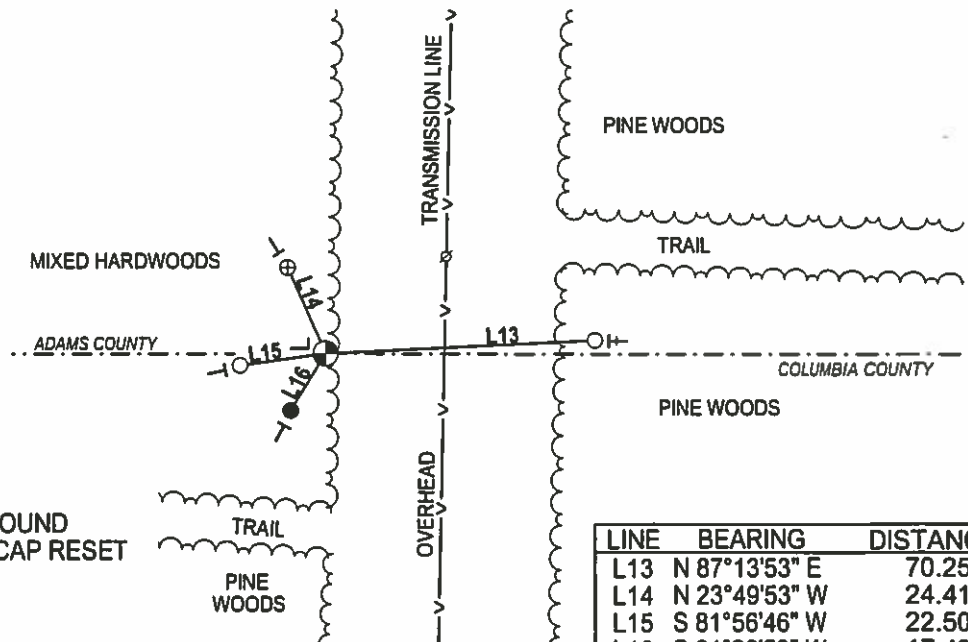
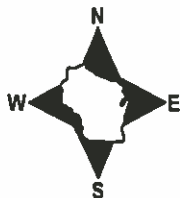
DATA SHOWN HERE ON THIS TIE SHEET IS CORRECT AND COMPLETE TO THE BEST OF MY KNOWLEDGE AND BELIEF.

PROFESSIONAL LAND SURVEYOR

DATE 3/15/17

- TIE SKETCH -

NOTE: THE CORNER FALLS 260'± WEST OF THE CENTERLINE OF DEER RUN RDG.



- ∅ POWER POLE
- 3/4" IRON ROD FOUND
- ⊕ 3/4" IRON ROD W/ALUMINUM CAP FOUND
- 3/4" X 30" IRON ROD W/ALUMINUM CAP RESET
- ⊙ HARRISON FOUND
- | VINYL "T" POST
- | EXISTING STEEL POST
- | FIBERGLASS "T" POST

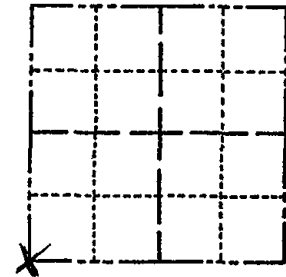
LINE	BEARING	DISTANCE
L13	N 87°13'53" E	70.25'
L14	N 23°49'53" W	24.41'
L15	S 81°56'46" W	22.50'
L16	S 31°29'52" W	17.43'

ADAMS COUNTY

Survey Monument Record

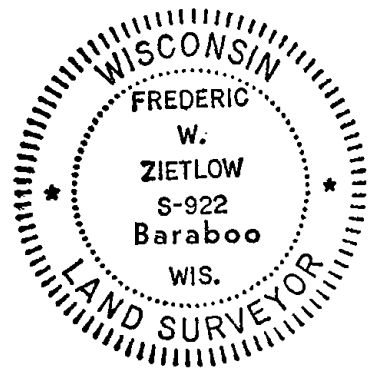
TYPE OF MONUMENT: 30" HARRISON
 STATE PLANE COORDINATES: N _____
 E _____
 ELEVATION — M.S.L. DATUM: _____
 THETA ANGLE: _____
 FIELD BOOK: _____ PAGE _____

CORNER NO. 918
 SECTION 34
 TOWN 14N
 RANGE 6E



LOCATION
(Indicated by 'X')

SEAL:



BASIS FOR MONUMENT LOCATION

(Use reverse side if necessary)

Show info such as: History of corner, with reference to Vol. and pg, dates, surveyor; exact description of monument replaced; if location computed, by taped or EDM traverse; landowner remarks, etc.

FOUND 8"X8"X16" STONE LAYING ON TOP OF GROUND AT FENCE CORNER. THIS STONE WAS SET BY COLUMBIA Co. SURVEYOR C.E. CORNING IN 1920 IN WORKING WITH ADAMS Co. SURVEYOR A.J. BARRETT. SEE COLUMBIA Co. SURVEY RECORD BLUE PRINT No. 162, MONUMENTED FENCE COR. AS STONE WAS APPARENTLY REMOVED. FIT TRANSIT TAPE TRAVERSE OF SECTION GOOD.

CORNER O.K 12-14-81 SK-DW
 " " 4-1-86 S.S.

ALL OK 10-22-90 JG-SS
 OK 2-26-96 SS

1-GONE, 2-NEW, MON. OK 3-07-01 JG-MH

CERTIFIED CORRECT:

Frederic W. Zietlow

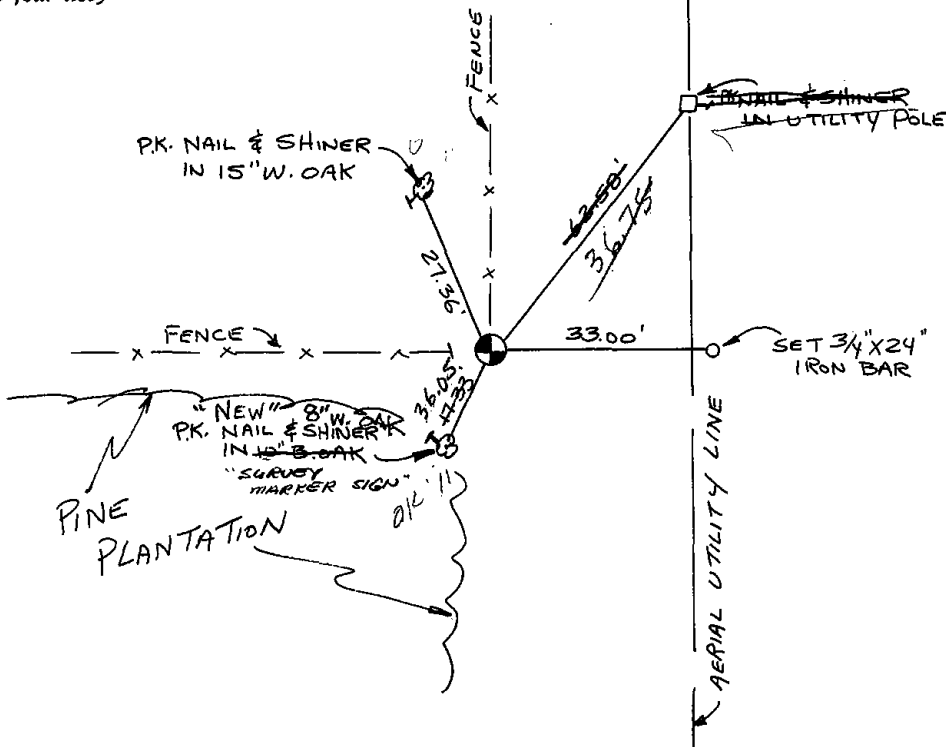
Registered Land Surveyor

DATE: MARCH 25, 1976

TIE SKETCH

ALL OK, USE COLUMBIA Co. TIES ALSO; 11-27-06-JG-SS
 4-7-11 SS

(Show at least four ties)



U. S. PUBLIC LAND SURVEY MONUMENT RECORD

COLUMBIA COUNTY

INSTRUCTIONS: This record shall show the location of the corner and shall include all of the following nine elements (a through i).

(a) Identify the corner by reference to the U.S. public land survey system.

○ = Corner monument restored.

CORNER MONUMENT RESTORED WAS THE NW CORNER OF SECTION 3 T. 13N., R. 6 E., TOWN OF NEWPORT, COL. CO.

CORNER HISTORY:

ORIGIN:

BY SURVEYOR(S) _____

DATE: _____

PERPETUATION: (PAGE, DATE & SURVEYOR)

VOL. I SEE PREVIOUS TIE SHEET

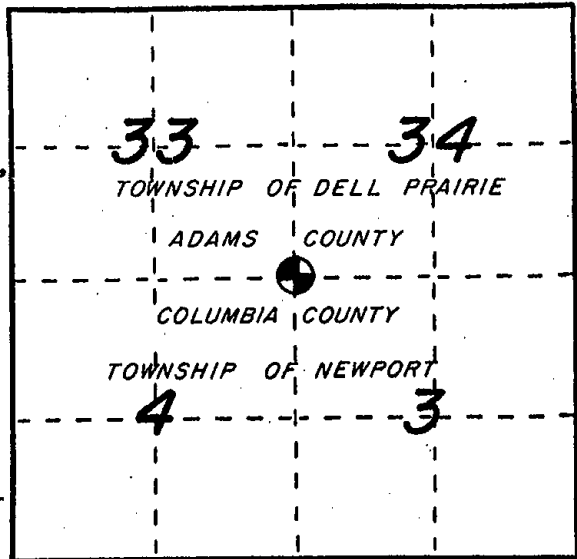
VOL. II _____

B. P. R. _____

FIELD BOOK _____

RECENT SURVEYS: (REF., DATE & SURVEYOR)

TIE SHEET BY FREDERIC W. ZIETLOW RLS DATED 3-25-76



(b) Describe any record evidence, monument evidence, occupational evidence, testimonial evidence or any other material evidence you considered, and whether the monument was found or placed.

EVIDENCE FOUND:

RECORD _____, MONUMENT x, OCCUPATIONAL _____, TESTIMONIAL _____, OTHER _____.

ORIGINAL CORNER MONUMENT LOCATION WAS N/A FOUND.

DESCRIPTION: FOUND ADAMS COUNTY MONUMENT AND SET THREE ADDITIONAL WITNESS MONUMENTS

COLUMBIA COUNTY ALUMINUM WAS SET IN PLACE. (FOR ANY ADD'L INFO SEE BACK)

(c) In the plan view drawing below, provide reference ties to at least 4 witness monuments, or, if the location is within a municipality, to at least 2 witness monuments. (Witness monuments shall be made of concrete, natural stone, iron or other equally durable material.) Describe witness monuments.

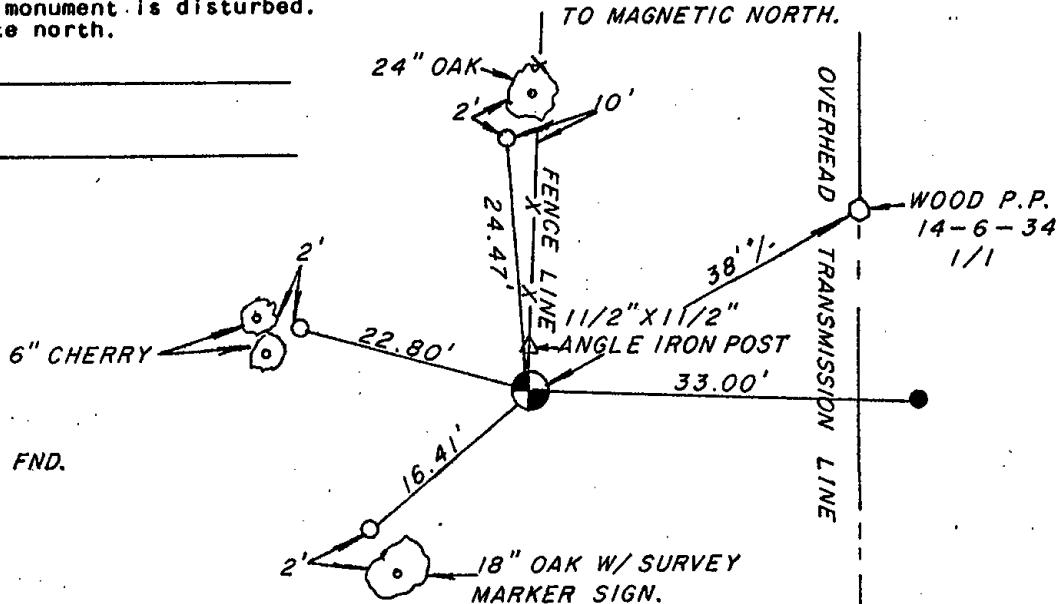
(d) Show a plan view drawing depicting the relevant monuments and reference ties which is sufficient in detail to enable accurate relocation of the corner monument if the corner monument is disturbed. Indicate north.

- ⊕ - ~~COLUMBIA COUNTY ALUM. MON. SET~~
- - 3/4" x 30" REBAR W/ALUM. WITNESS CAP SET
- (OTHER) FND. 3/4" IRON ROD

NO SCALE

NOTE: ALL BEARINGS SHOWN ARE REFERENCED TO MAGNETIC NORTH.

N _____
E _____



⊕ HARRISON MON. FND.

DRAFTED BY D. SCHARP DATE 10-13-97 CORNER REF. A-13

PINE
PLANTATION

(e) Describe any material discrepancy between the location of the corner as restored or reestablished and the location of that corner as previously restored or reestablished by distance and direction. Show the discrepancy on the plan view drawing under (d), above. Show the distances between the corner as previously restored or reestablished and (1) the corner as restored or reestablished, and (2) to at least 2 of the witness monuments shown on the drawing in (d), above.

FOUND: _____

SET BY: _____

JOB REF: _____

BEARS _____, _____ FROM CORNER MON. SET.

(f) Was the corner restored through acceptance of (1) an obliterated evidence location, or, (2) a found perpetuated location?

THIS CORNER WAS RESTORED THROUGH _____ N/A _____ LOCATION.

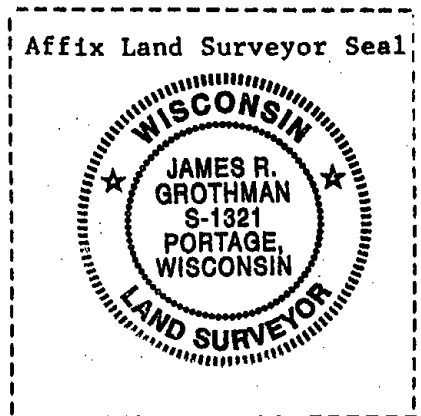
(g&h) Was the corner reestablished through lost corner proportionate methods? If so, show the method, including the directions and distances to other public land survey corners used as evidence or used for proportioning in determining the corner location?

NO SCALE

BEARINGS REFERENCED TO _____
DISTANCES ARE: _____ GRID _____ GROUND
GRID FACTOR: _____



picture taken; yes no



(1) I, James R. Grothman
(type or print name) certify that the corner location shown on this record was determined by me or under my direction and control and that this U.S. Public Land Survey Monument Record is correct and complete to the best of my knowledge and belief.

James R. Grothman _____ 2.02.98
Signature Date