

35
SECTION

14
TOWN

06
RANGE

ADAMS COUNTY

COUNTY CORNER NO: 130

ROMPORTOL ID: 41406350020

PUBLIC LAND SURVEY MONUMENT RECORD

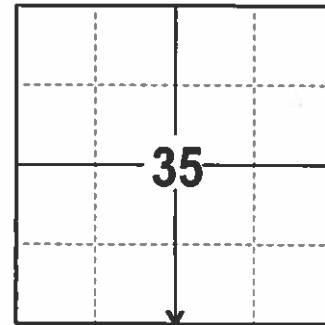
TYPE OF MONUMENT: HARRISON
ADAMS COUNTY COORDINATES, NAD 83 (2007)

N. 100541.768

E. 549444.777

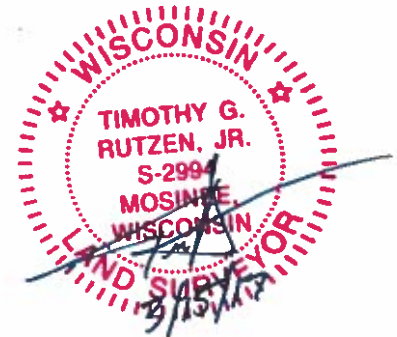
ELEVATION- DATUM

FIELD WORK DATE: 2/23/2017



LOCATION
(INDICATE CORNER BY "X")

SEAL:



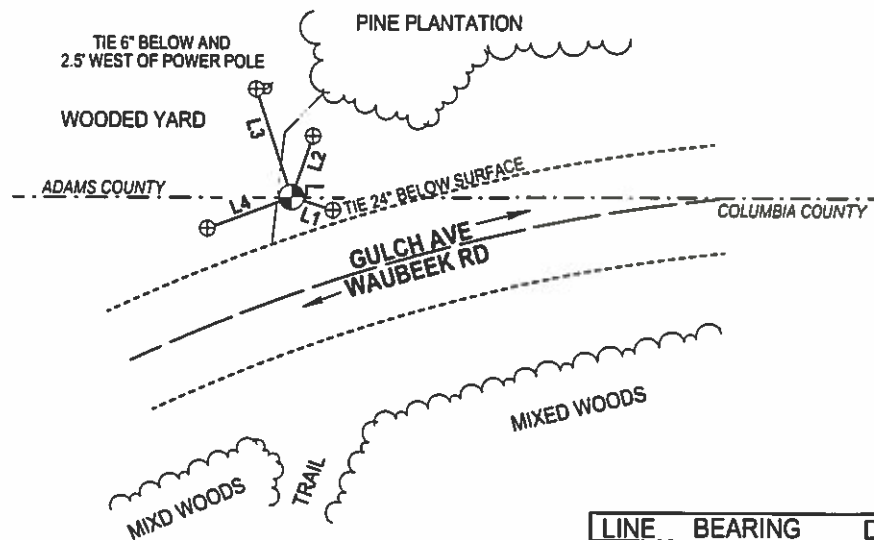
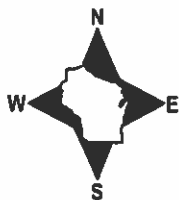
DATA SHOWN HERE ON THIS TIE SHEET IS CORRECT AND COMPLETE TO THE BEST OF MY KNOWLEDGE AND BELIEF.

PROFESSIONAL LAND SURVEYOR

DATE 3/15/17

- TIE SKETCH -

NOTE: THE CORNER FALLS 24'± NORTHWEST OF THE CENTERLINE OF GULCH AVE AND WAUBEK RD.



- ⊕ 3/4" IRON ROD W/ALUMINUM CAP FOUND
- ⊙ HARRISON FOUND
- ⌊ FIBERGLASS "T" POST

LINE	BEARING	DISTANCE
L1	S 72°37'21" E	11.27'
L2	N 19°15'44" E	16.84'
L3	N 18°22'47" W	29.56'
L4	S 69°30'01" W	23.50'

ADAMS COUNTY

SEE Tie sheet BY D. SCHARP
DATED 1997

CORNER NO. 586⁽¹³⁰⁾
SECTION 35
TOWN 14
RANGE 6

Survey Monument Record

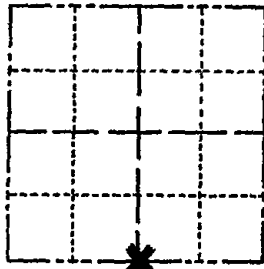
TYPE OF MONUMENT: Harrison standard

STATE PLANE COORDINATES: N _____
E _____

ELEVATION — M.S.L. DATUM: _____

THETA ANGLE: _____

FIELD BOOK: _____ PAGE _____



LOCATION
(Indicated by 'X')

BASIS FOR MONUMENT LOCATION

(Use reverse side if necessary)

Show info such as: History of corner, with reference to Vol. and pg, dates, surveyor; exact description of monument replaced; if location computed, by taped or EDM traverse; landowner remarks, etc.

SEAL:



Replaced existing 3/4" rebar of unknown origin, which has been used in surveys of the area.

- CORNER O.K. 10-9-76 GR-SS
- CORNER O.K. 10-14-81 SK-DW
- " " 2-12-86 GR-SS
- ALL OK 10-22-90 SS-JG
- 1-GONE, COR OK 12/6/95 JG-SS
- ALL OK 3-20-01, JG
- OK, 11-10-06 JG-SS
- OK 1-17-11 MS-SS

CERTIFIED CORRECT:

Anthony B. Kiedrowski
Registered Land Surveyor

DATE: 1/3/15

TIE SKETCH

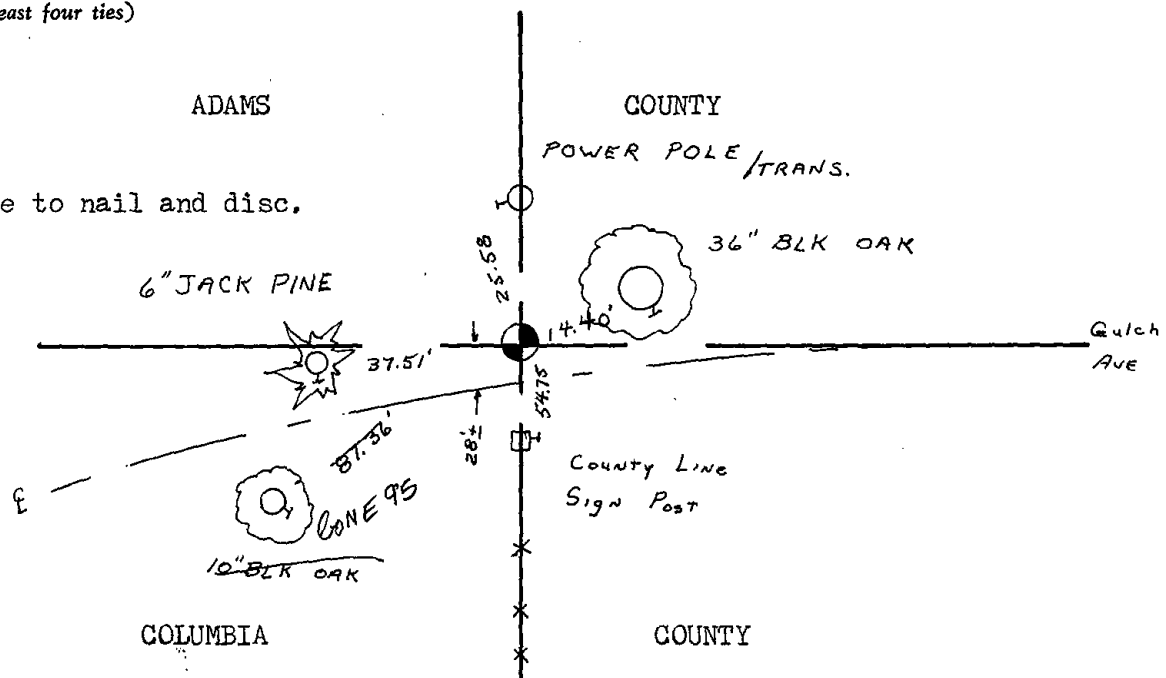
(Show at least four ties)

ADAMS COUNTY

COUNTY

POWER POLE / TRANS.

Ties are to nail and disc.



U. S. PUBLIC LAND SURVEY MONUMENT RECORD

COLUMBIA COUNTY

INSTRUCTIONS: This record shall show the location of the corner and shall include all of the following nine elements (a through i).

(a) Identify the corner by reference to the U.S. public land survey system.

○ = Corner monument restored.

CORNER MONUMENT RESTORED WAS THE N 1/4 CORNER OF SECTION 2 T. 13N., R. 6 E., TOWN OF NEWPORT, COL. CO.

CORNER HISTORY:

ORIGIN:

BY SURVEYOR(S) _____

DATE: _____

PERPETUATION: (PAGE, DATE & SURVEYOR)

VOL. I SEE PREVIOUS TIE SHEET

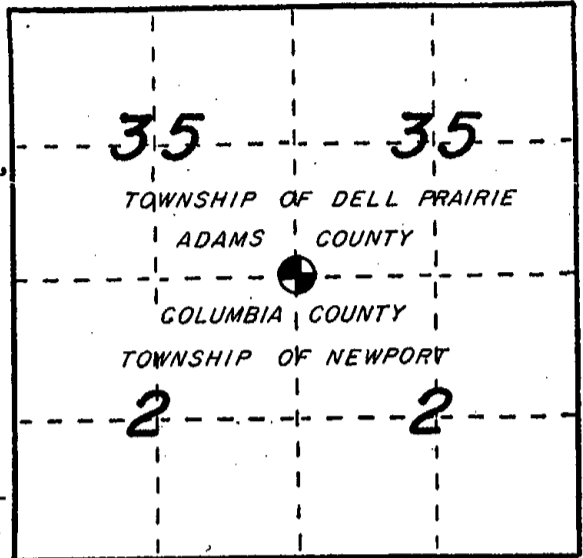
VOL. II _____

B. P. R. _____

FIELD BOOK _____

RECENT SURVEYS: (REF., DATE & SURVEYOR)

TIE SHEET BY ANTHONY B. KIEDROWSKI RLS DATED 1-3-75



(b) Describe any record evidence, monument evidence, occupational evidence, testimonial evidence or any other material evidence you considered, and whether the monument was found or placed.

EVIDENCE FOUND:

RECORD _____, MONUMENT x, OCCUPATIONAL _____, TESTIMONIAL _____, OTHER _____.

ORIGINAL CORNER MONUMENT LOCATION WAS N/A FOUND.

DESCRIPTION: FOUND ADAMS COUNTY MONUMENT AND SET FOUR (4)

ADDITIONAL WITNESS MONUMENTS

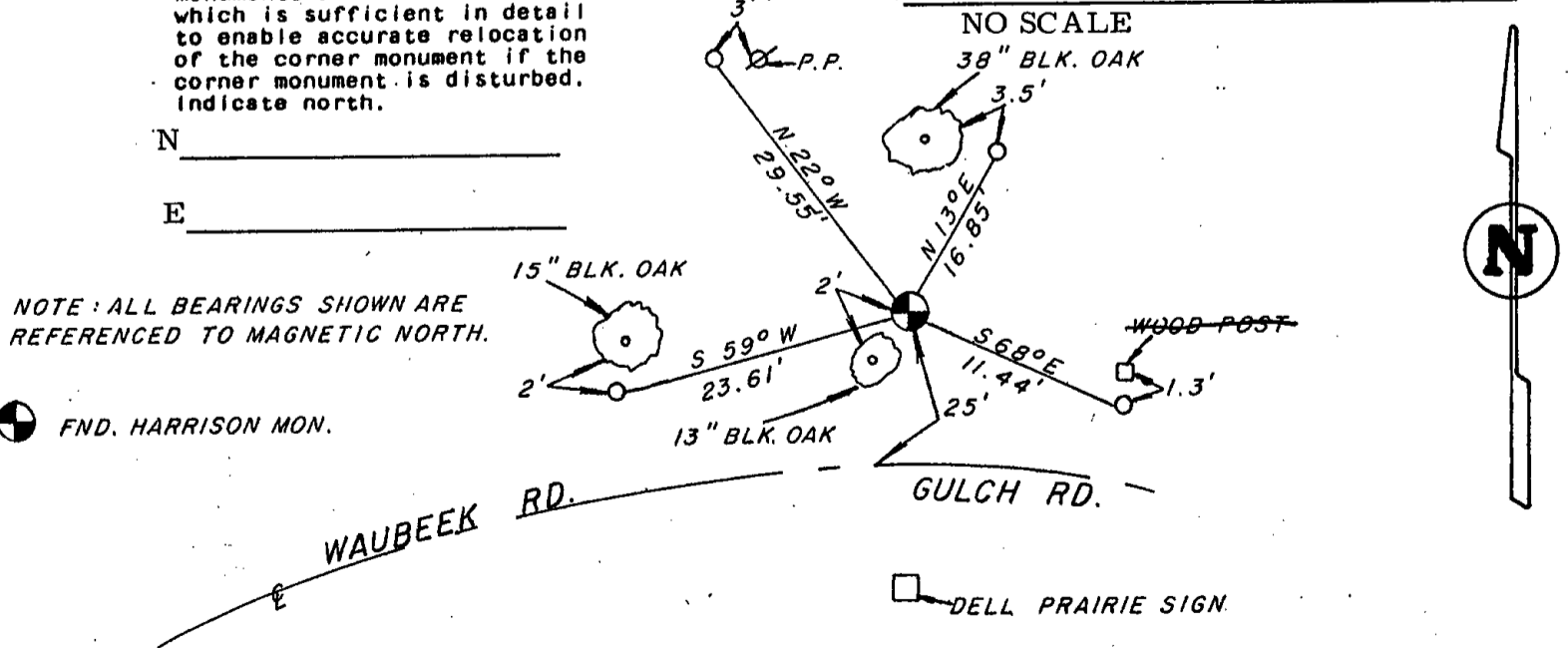
COLUMBIA COUNTY ALUMINUM WAS SET IN PLACE. (FOR ANY ADD'L INFO SEE BACK)

(c) In the plan view drawing below, provide reference ties to at least 4 witness monuments, or, if the location is within a municipality, to at least 2 witness monuments. (Witness monuments shall be made of concrete, natural stone, iron or other equally durable material.) Describe witness monuments.

(d) Show a plan view drawing depicting the relevant monuments and reference ties which is sufficient in detail to enable accurate relocation of the corner monument if the corner monument is disturbed. Indicate north.

N _____
E _____

⊕ - COLUMBIA COUNTY ALUM. MON. SET
○ - 3/4" x 30" REBAR W/ALUM. WITNESS CAP SET
(OTHER)



NOTE: ALL BEARINGS SHOWN ARE REFERENCED TO MAGNETIC NORTH.

⊕ FND. HARRISON MON.

DRAFTED BY D. SCHARP DATE 10-13-97 CORNER REF. A-19

(e) Describe any material discrepancy between the location of the corner as restored or reestablished and the location of that corner as previously restored or reestablished by distance and direction. Show the discrepancy on the plan view drawing under (d), above. Show the distances between the corner as previously restored or reestablished and (1) the corner as restored or reestablished, and (2) to at least 2 of the witness monuments shown on the drawing in (d), above.

FOUND: _____

SET BY: _____

JOB REF: _____

BEARS _____, _____ FROM CORNER MON. SET.

(f) Was the corner restored through acceptance of (1) an obliterated evidence location, or, (2) a found perpetuated location?

THIS CORNER WAS RESTORED THROUGH _____ N/A _____ LOCATION.

(g&h) Was the corner reestablished through lost corner proportionate methods? If so, show the method, including the directions and distances to other public land survey corners used as evidence or used for proportioning in determining the corner location?

NO SCALE

BEARINGS REFERENCED TO _____
DISTANCES ARE: _____ GRID _____ GROUND
GRID FACTOR: _____



picture taken; yes no



(i) I, James R. Grothman
(type or print name) certify that the corner location shown on this record was determined by me or under my direction and control and that this U.S. Public Land Survey Monument Record is correct and complete to the best of my knowledge and belief.

James R. Grothman
Signature Date 2.02.98