

35 SECTION 15 TOWN 06 RANGE

ADAMS COUNTY

COUNTY CORNER NO: 131
ROMPORTOL ID: 41506350000

PUBLIC LAND SURVEY MONUMENT RECORD

TYPE OF MONUMENT: HARRISON
ADAMS COUNTY COORDINATES, NAD 83 (2007)

N. 132902.976

E. 552392.715

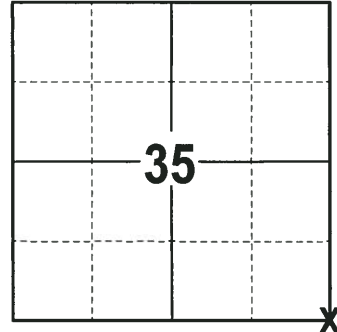
ELEVATION- DATUM

FIELD WORK DATE: 09/20/2017

BASIS FOR MONUMENT LOCATION

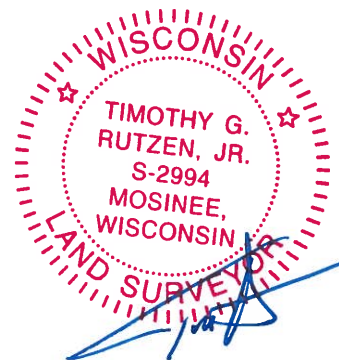
2014 - PLS 2443 THE LAST TIE SHEET ON FILE FOR THIS CORNER IS DATED MAY 26, 1976 BY FREDERIC W. ZIETLOW, R.L.S 922. ZIETLOW STATES HE FOUND A POINTED STONE AT THIS CORNER AND REPLACED IT WITH A HARRISON MONUMENT. NUMEROUS NOTATIONS BY OTHER SURVEYORS ALSO APPEAR ON THE TIE SHEET. FOUND THE STANDARD HARRISON CAST IRON MONUMENT AS NOTED BY ZIETLOW AND ESTABLISHED REFERENCE TIES TO PERPETUATE THE CORNER LOCATION.

2017 - PLS 2994 FOUND A HARRISON MONUMENT 6" BELOW THE ROAD SURFACE, 4 TIES, 1 PROPERTY IRON AND 1 WITNESS TREE STUMP. WHILE DIGGING FOR THE HARRISON MONUMENT A LOCAL FARMER STOPPED AND SAID THAT THE CORNER IS AT THE CENTERLINE INTERSECTION. FOUND A 1/2" IRON ROD AT THIS LOCATION, ORIGIN OF THIS MONUMENT IS UNKNOWN. ACCEPTED THE HARRISON MONUMENT AS THE CORNER LOCATION, BEING THAT IT HAS BEEN USED IN NUMEROUS SURVEYS AND HAS BEEN ACCEPTED AS THE CORNER LOCATION SINCE 1976. HARRISON FITS WELL WITH THE EXISTING TIES AND WITNESS TREE STUMP FROM WHEN PLS 922 SET THE HARRISON MONUMENT. RE-MEASURED TO THE EXISTING TIES, PROPERTY IRON AND WITNESS TREE STUMP.



LOCATION
(INDICATE CORNER BY "X")

SEAL:



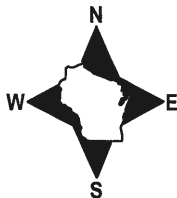
DATA SHOWN HERE ON THIS TIE SHEET IS CORRECT AND COMPLETE TO THE BEST OF MY KNOWLEDGE AND BELIEF.

PROFESSIONAL LAND SURVEYOR

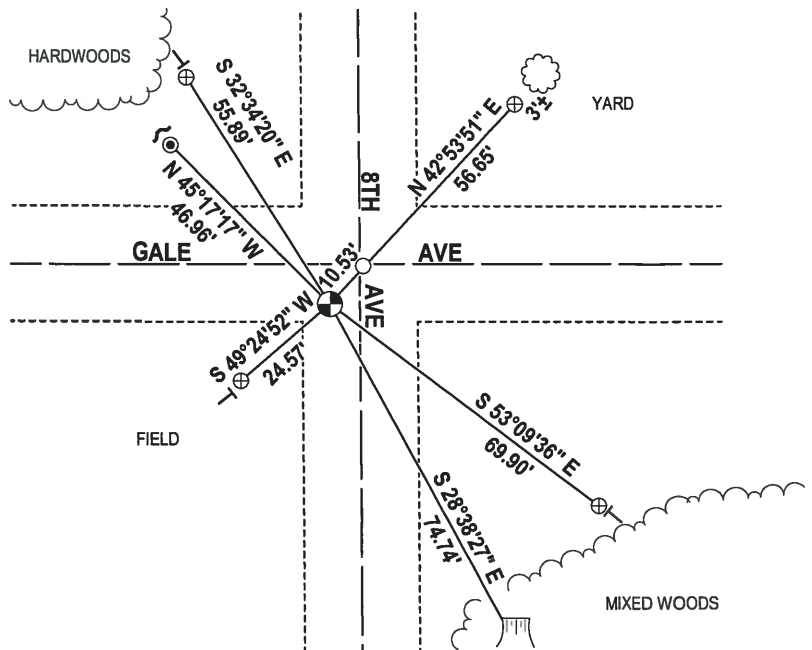
DATE 11-15-17

- TIE SKETCH -

NOTE: THE CORNER FALLS 8'± SOUTH OF THE CENTERLINE OF GALE AVE AND 6'± WEST OF THE CENTERLINE OF 8TH AVE.



- 1/2" IRON ROD FOUND
- ⊕ 3/4" IRON ROD FOUND
- ⊙ 3/4" IRON ROD FOUND
- ⊗ HARRISON FOUND
- ~ STEEL FENCE POST
- VINYL "T" POST
- 🌳 WITNESS TREE STUMP FOUND
- ☁ WITNESS TREE FOUND



35 SECTION 14 TOWN 06 RANGE

ADAMS COUNTY

COUNTY CORNER NO: 131
 ROMPORTOL ID: 41406350000

PUBLIC LAND SURVEY MONUMENT RECORD

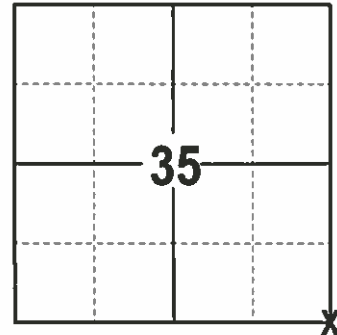
TYPE OF MONUMENT: HARRISON (BROKEN TOP)
 ADAMS COUNTY COORDINATES, NAD 83 (2007)

N. 100653.029

E. 552082.852

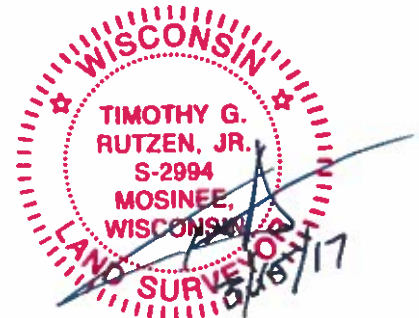
ELEVATION- DATUM

FIELD WORK DATE: 2/23/2017



LOCATION
 (INDICATE CORNER BY "X")

SEAL:



DATA SHOWN HERE ON THIS TIE SHEET IS CORRECT AND COMPLETE TO THE BEST OF MY KNOWLEDGE AND BELIEF.

PROFESSIONAL LAND SURVEYOR

DATE 3/15/17

BASIS FOR MONUMENT LOCATION

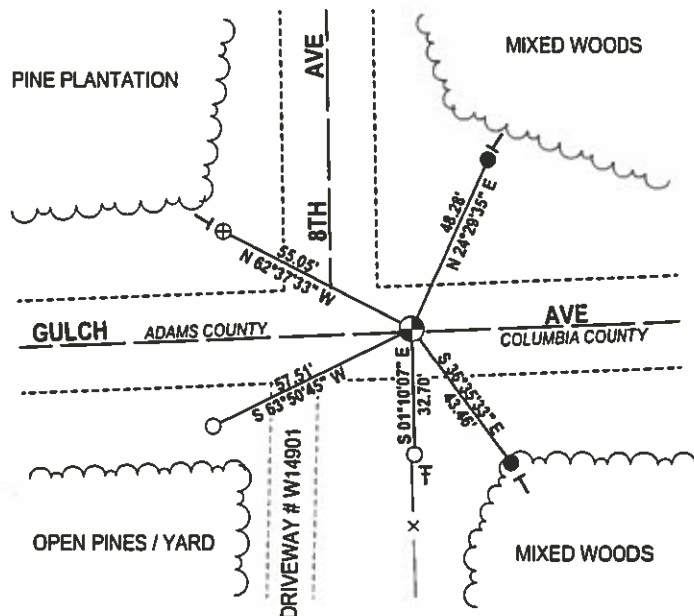
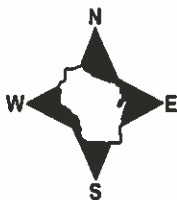
1974- PLS 878 SET A HARRISON AT FOUND PK NAIL THAT WAS SET BY MID STATES ASSOCIATES AFTER EXTENSIVE CHECKING OF THE SECTION PROVED IT TO BE CORRECT.

1998- PLS 1321 FOUND A HARRISON, AND SET 4 TIES.

2017 - PLS 2994 FOUND A HARRISON 12" BELOW SURVEY NAIL AT THE SURFACE, AND 2 EXISTING TIES. THE HARRISON AGREES WITH TIES. ACCEPTED HARRISON AND REMEASURED TO THE 2 EXISTING TIES. ALSO SET 2 NEW TIES AND TIED TO AN EXISTING PROPERTY IRON .

- TIE SKETCH

NOTE: THE CORNER FALLS 1½ NORTH OF THE CENTERLINE OF GULCH AVE AND 21½ EAST OF THE CENTERLINE OF 8TH AVENUE..



- 3/4" IRON ROD FOUND
- ⊕ 3/4" IRON ROD W/ALUMINUM CAP FOUND
- 3/4" x 18" IRON REBAR SET, 1.50#/FT
- ⊕ HARRISON FOUND
- VINYL "T" POST
- EXISTING STEEL POST

ADAMS COUNTY

Survey Monument Record

TYPE OF MONUMENT: Harrison Standard

STATE PLANE COORDINATES: N _____

E _____

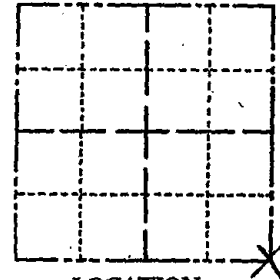
ELEVATION — M.S.L. DATUM: _____

THETA ANGLE: _____

FIELD BOOK: _____ PAGE _____

SEE TIE SHEET
BY D. SCHARP 1997

CORNER NO. 450 (131)
SECTION 35
TOWN 14
RANGE 6



LOCATION
(Indicated by 'X')

BASIS FOR MONUMENT LOCATION

(Use reverse side if necessary)

Show info such as: History of corner, with reference to Vol. and pg, dates, surveyor; exact description of monument replaced; if location computed, by taped or EDM traverse; landowner remarks, etc.

SEAL:



Monumented PK nail set by Mid States after extensive checking of the section proved it correct.

- CORNER OK 10-9-76 GR-SS
- CORNER OK 12-14-81 EK-DW
- u OK 2-12-86 GR-SS
- ALL OK 10-22-90 SS-JG
- COR OK 12/6/95 JG-SS

SEE TIE SHEET DTD 7-11-00 SH-EL

ALL OK 3-20-01, JG

ALL OK, 11-10-06 - JG-SS
OK 01-17-11 MS-SS

CERTIFIED CORRECT:

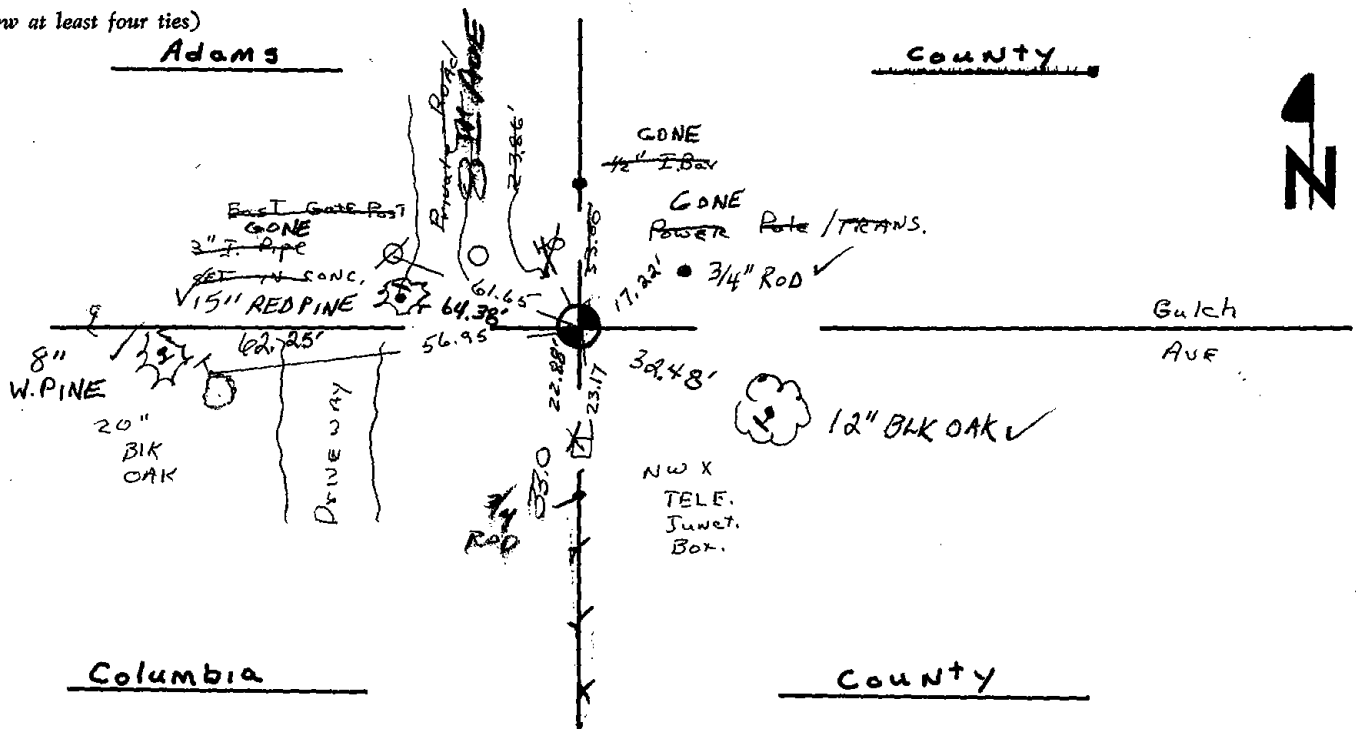
Anthony B. Kiedrowski
Registered Land Surveyor

DATE: July 31, 1974

TIE SKETCH

All ties to nail and disc.

(Show at least four ties)



U. S. PUBLIC LAND SURVEY MONUMENT RECORD

COLUMBIA COUNTY

INSTRUCTIONS: This record shall show the location of the corner and shall include all of the following nine elements (a through i).

(a) Identify the corner by reference to the U.S. public land survey system.

○ = Corner monument restored.

CORNER MONUMENT RESTORED WAS THE N 1/4 CORNER OF SECTION 1 T. 13N., R. 6E., TOWN OF NEWPORT, COL. CO.

CORNER HISTORY:

ORIGIN:

BY SURVEYOR(S) _____

DATE: _____

PERPETUATION: (PAGE, DATE & SURVEYOR)

VOL. I SEE PREVIOUS TIE SHEET

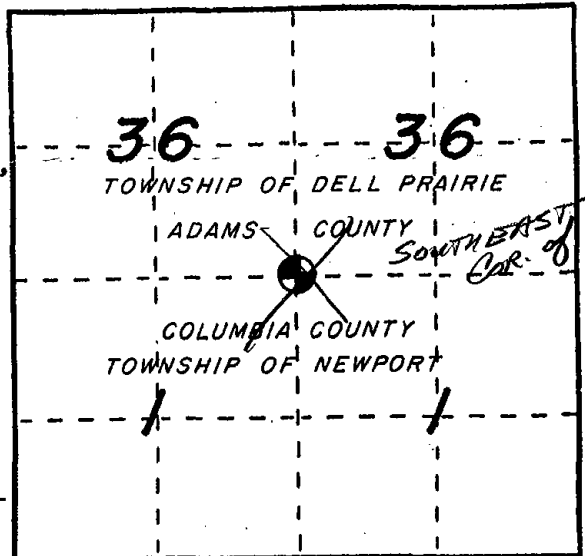
VOL. II _____

B. P. R. _____

FIELD BOOK _____

RECENT SURVEYS: (REF., DATE & SURVEYOR)

TIE SHEET BY FREDERIC W. ZIETLOW RLS DATED 7-31-75



(b) Describe any record evidence, monument evidence, occupational evidence, testimonial evidence or any other material evidence you considered, and whether the monument was found or placed.

EVIDENCE FOUND:

RECORD _____, MONUMENT X, OCCUPATIONAL _____, TESTIMONIAL _____, OTHER _____.

ORIGINAL CORNER MONUMENT LOCATION WAS N/A FOUND.

DESCRIPTION: FOUND ADAMS COUNTY MONUMENT AND SET FOUR (4)

ADDITIONAL WITNESS MONUMENTS

COLUMBIA COUNTY ALUMINUM WAS SET IN PLACE. (FOR ANY ADD'L INFO SEE BACK)

(c) In the plan view drawing below, provide reference ties to at least 4 witness monuments, or, if the location is within a municipality, to at least 2 witness monuments. (Witness monuments shall be made of concrete, natural stone, iron or other equally durable material.) Describe witness monuments.

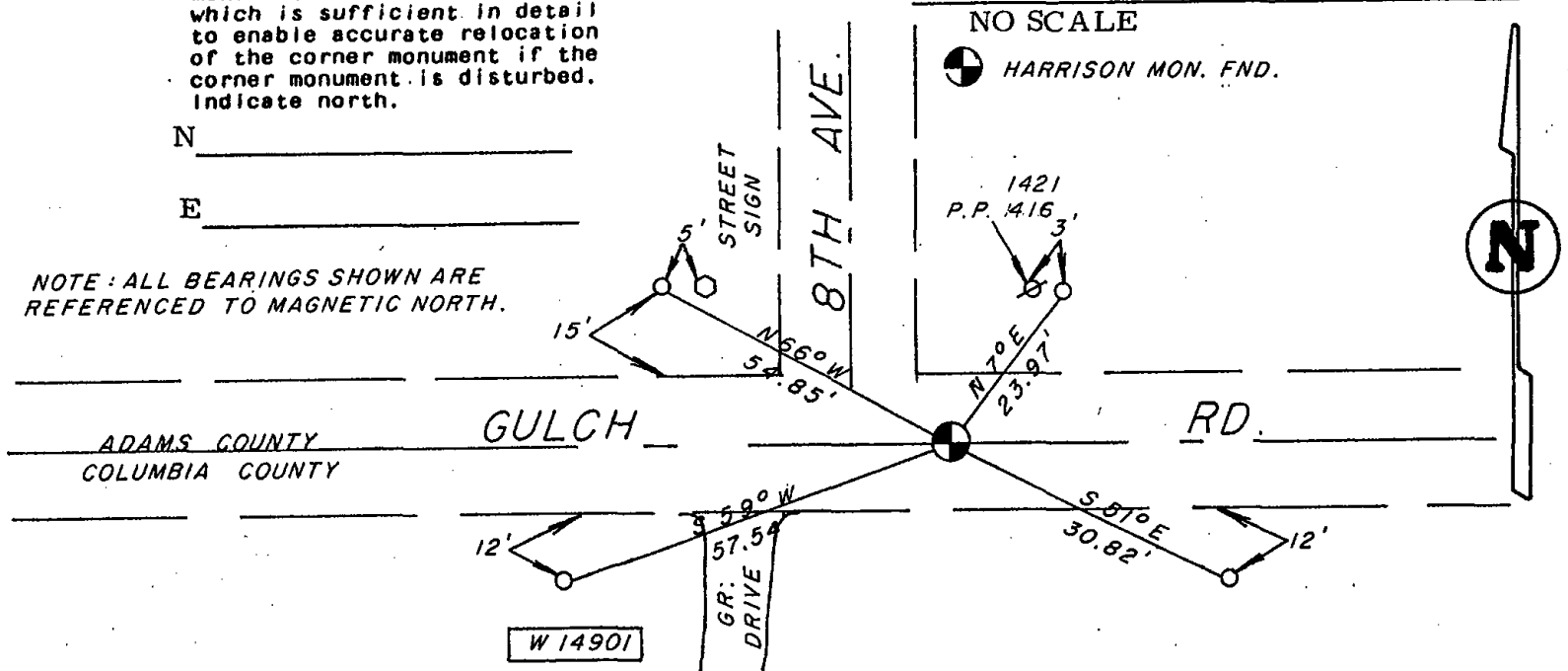
(d) Show a plan view drawing depicting the relevant monuments and reference ties which is sufficient in detail to enable accurate relocation of the corner monument if the corner monument is disturbed. Indicate north.

⊙ - ~~COLUMBIA COUNTY ALUM. MON. SET~~
○ - 3/4"x30" REBAR W/ALUM. WITNESS CAP SET (OTHER)

N _____

E _____

NOTE: ALL BEARINGS SHOWN ARE REFERENCED TO MAGNETIC NORTH.



DRAFTED BY D. SCHARP DATE 10-8-97 CORNER REF. A-23

(e) Describe any material discrepancy between the location of the corner as restored or reestablished and the location of that corner as previously restored or reestablished by distance and direction. Show the discrepancy on the plan view drawing under (d), above. Show the distances between the corner as previously restored or reestablished and (1) the corner as restored or reestablished, and (2) to at least 2 of the witness monuments shown on the drawing in (d), above.

FOUND: _____

SET BY: _____

JOB REF: _____

BEARS _____, _____ FROM CORNER MON. SET.

(f) Was the corner restored through acceptance of (1) an obliterated evidence location, or, (2) a found perpetuated location?

THIS CORNER WAS RESTORED THROUGH _____ N/A _____ LOCATION.

(g&h) Was the corner reestablished through lost corner proportionate methods? If so, show the method, including the directions and distances to other public land survey corners used as evidence or used for proportioning in determining the corner location?

NO SCALE

BEARINGS REFERENCED TO _____
DISTANCES ARE: _____ GRID _____ GROUND
GRID FACTOR: _____



picture taken; yes no

Affix Land Surveyor Seal



(i) I, James R. Grothman
(type or print name) certify that the corner location shown on this record was determined by me or under my direction and control and that this U.S. Public Land Survey Monument Record is correct and complete to the best of my knowledge and belief.

Signature

Date

2.02.98

ADAMS COUNTY

Survey Monument Record

TYPE OF MONUMENT: Harrison Standard

STATE PLANE COORDINATES: N _____

E _____

ELEVATION — M.S.L. DATUM: _____

THETA ANGLE: _____

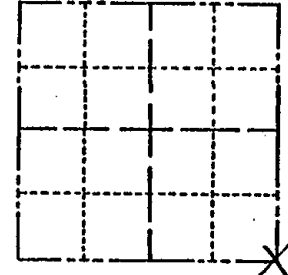
FIELD BOOK: _____ PAGE _____

CORNER NO. 450

SECTION 35

TOWN 14

RANGE 6



LOCATION
(Indicated by 'X')



BASIS FOR MONUMENT LOCATION

(Use reverse side if necessary)

Show info such as: History of corner, with reference to Vol. and pg. dates, surveyor; exact description of monument replaced; if location computed, by taped or EDM traverse; landowner remarks, etc.

SEAL:



Monumented PK nail set by Mid States after extensive checking of the section proved it correct.

CORNER OK 10-9-76 AR-SS
 CORNER OK 12-11-81 EK-DW
 " OK 2-12-86 GR-SS
 NEW TIES 7-11-00 SH-EL

CERTIFIED CORRECT:

Anthony B. Kiedrowski
Registered Land Surveyor

DATE: July 31, 1974

TIE SKETCH

All ties to nail and disc.

(Show at least four ties)

