

32
SECTION

15
TOWN

07
RANGE

ADAMS COUNTY

COUNTY CORNER NO: 124

ROMPORTOL ID: 41507320020

PUBLIC LAND SURVEY MONUMENT RECORD

TYPE OF MONUMENT: HARRISON
ADAMS COUNTY COORDINATES, NAD 83 (2007)

N. 132920.301

E. 565262.852

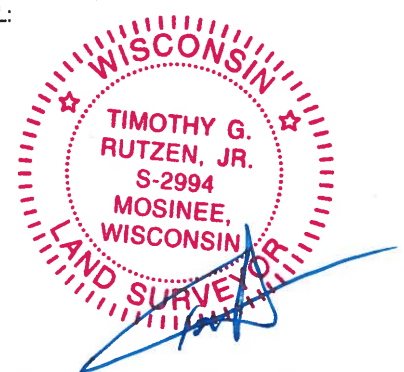
ELEVATION- _____ DATUM _____

FIELD WORK DATE: 10/31/2017



LOCATION
(INDICATE CORNER BY "X")

SEAL:

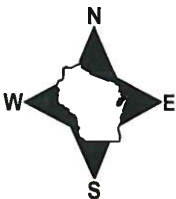


DATA SHOWN HERE ON THIS TIE SHEET IS CORRECT AND COMPLETE TO THE BEST OF MY KNOWLEDGE AND BELIEF.

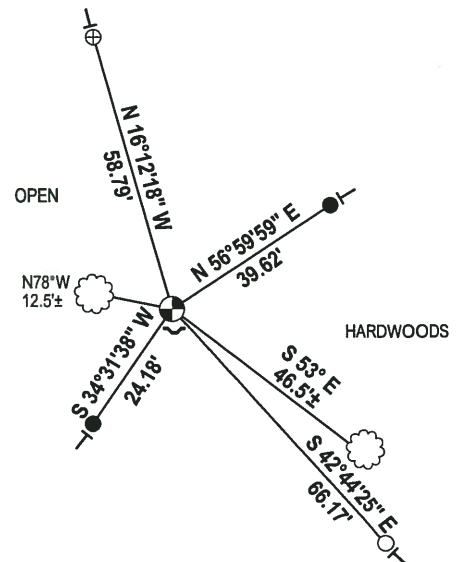
PROFESSIONAL LAND SURVEYOR

DATE 12-4-17

TIE SKETCH



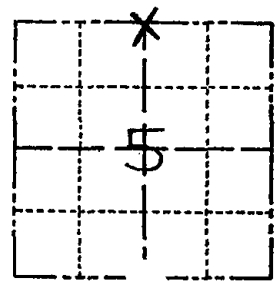
- 3/4" x 18" IRON REBAR SET, 1.50#/FT
- 1/2" IRON ROD FOUND
- ⊕ 2-3/8" O.D. IROD PIPE FOUND
- ⊙ HARRISON FOUND
- ↘ STEEL FENCE POST
- └ VINYL "T" POST
- ☁ WITNESS TREE FOUND



Government Land Corner Certificate

_____ County
 TYPE OF MONUMENT: HARRISON
 STATE PLANE COORDINATES: N _____
 E _____
 ELEVATION — M.S.L. DATUM: _____
 THETA ANGLE: _____
 FIELD BOOK: _____ PAGE _____
 DRAWN BY: _____

CORNER NO. 4
 SECTION 5
 TOWN T. 14 N.
 RANGE R. 7 E.



LOCATION
 (Indicated by 'X')

BASIS FOR MONUMENT LOCATION

Show info such as: History of corner, with reference to Vol. and pg., dates, surveyor; exact description of monument replaced; if location computed, by taped or EDM traverse; landowner remarks, etc. (Use reverse side if necessary)

Found original Bt depression from 10" Burr Oak from original running notes. Traversed section by EDM and T-2 to verify corner. Found existing 2" pipe set for corner in erroneous position.

SEAL:



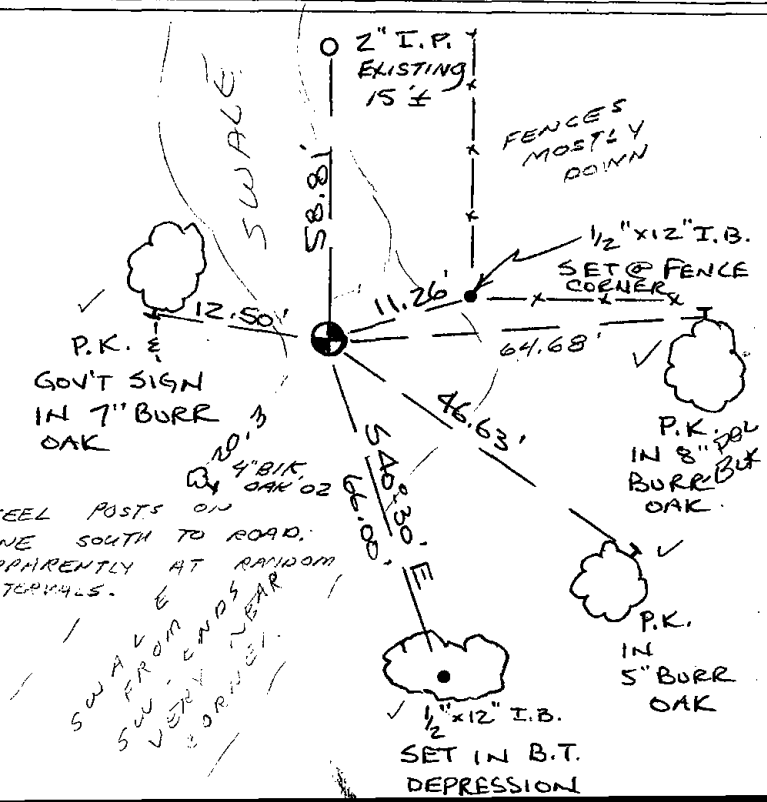
DATA SHOWN HERE ON
 CERTIFIED CORRECT:

Ken Schuette
 Registered Land Surveyor

DATE: 7 Aug 1979

TIE SKETCH

Show at least four ties, also fence lines, roads, topo, size and type of witness trees' and if off road - best way to arrive at corner.



MAINTENANCE RECORD

Date	Init.	Remarks
12-9-81	SK-DW	corner O.K.
3-20-86	SS	" "
8-22-91	JG-SS	OK
3-12-02	SS	1 NEW TIE
1-31-06	JG	OK