

34  
SECTION

15  
TOWN

07  
RANGE

# ADAMS COUNTY

COUNTY CORNER NO: 128  
ROMPORTOL ID: 41507340020

## PUBLIC LAND SURVEY MONUMENT RECORD

TYPE OF MONUMENT: HARRISON  
ADAMS COUNTY COORDINATES, NAD 83 (2007)

N. 132925.447

E. 575763.670

ELEVATION-        DATUM       

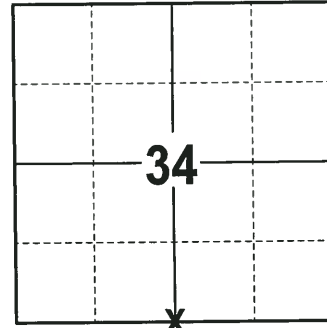
FIELD WORK DATE: 11/01/2017

### BASIS FOR MONUMENT LOCATION

1981 - PLS 878 NO RESURVEYS OF RECORD. COULD NOT FIND ANY EVIDENCE OF THE PREVIOUS MONUMENT. CORNER IS SET ON A STRAIGHT LINE EQUIDISTANT BETWEEN SECTION CORNERS. SET A STANDARD HARRISON MONUMENT AT THE CORNER LOCATION AND TIED OUT.

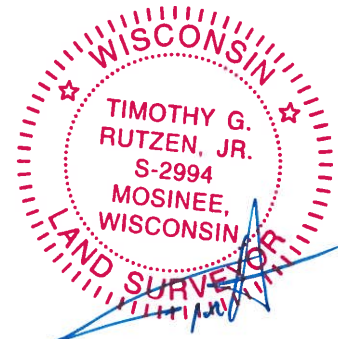
1992 - PLS 1478 FOUND THE HARRISON MONUMENT UNDISTURBED APPROXIMATELY 12" BELOW THE SURFACE AND THE EXISTING IRON PIPE WITNESS MONUMENTS WERE RELOCATED TO THE POSITIONS SHOWN ON THIS SHEET AT THE REQUEST OF THE LANDOWNER, ARTHUR JUNGENBURG, JR.

2017 - PLS 2994 FOUND A HARRISON MONUMENT 6" BELOW THE GROUND SURFACE. NO TIES OR WITNESSES WERE FOUND. ACCEPTED THE HARRISON MONUMENT AS THE CORNER LOCATION. SET 4 NEW TIES AND MEASURED TO THE TIES.



**LOCATION**  
(INDICATE CORNER BY "X")

SEAL:



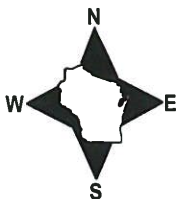
DATA SHOWN HERE ON THIS TIE SHEET IS CORRECT AND COMPLETE TO THE BEST OF MY KNOWLEDGE AND BELIEF.

PROFESSIONAL LAND SURVEYOR

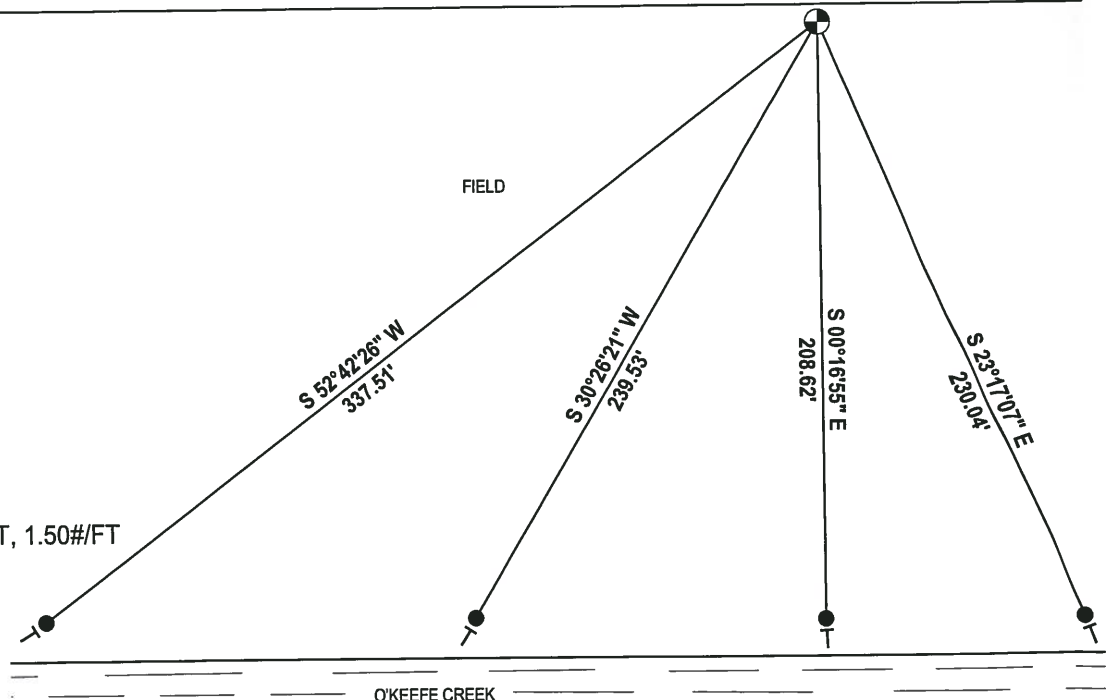
DATE 12-21-17

### - TIE SKETCH -

NOTE: THE CORNER FALLS 217'± NORTH OF THE EDGE OF O'KEEFE CREEK.



- 3/4" x 18" IRON REBAR SET, 1.50#/FT
- ⊕ HARRISON FOUND
- VINYL "T" POST



# Government Land Corner Certificate

ADAMS County

TYPE OF MONUMENT: \_\_\_\_\_

STATE PLANE COORDINATES: N \_\_\_\_\_  
E \_\_\_\_\_

ELEVATION — M.S.L. DATUM: \_\_\_\_\_

THETA ANGLE: \_\_\_\_\_

FIELD BOOK: 76 PAGE 113

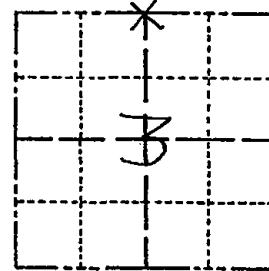
DRAWN BY: SA NAUMSCHILD

CORNER NO. 8

SECTION 3

TOWN 14

RANGE 7

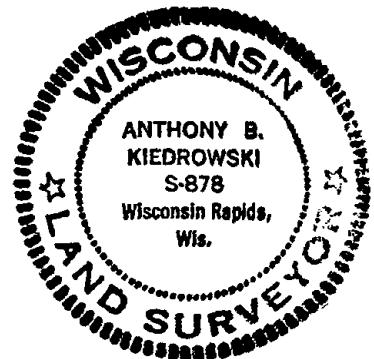


LOCATION  
(Indicated by 'X')

## BASIS FOR MONUMENT LOCATION

Show info such as: History of corner, with reference to Vol. and pg., dates, surveyor; exact description of monument replaced; if location computed, by taped or EDM traverse; landowner remarks, etc. (Use reverse side if necessary)

SEAL:



No resurveys of record. Could find no evidence of previous monument. Corner is set on a straight line equidistant between section corners.

DATA SHOWN HERE ON  
CERTIFIED CORRECT:

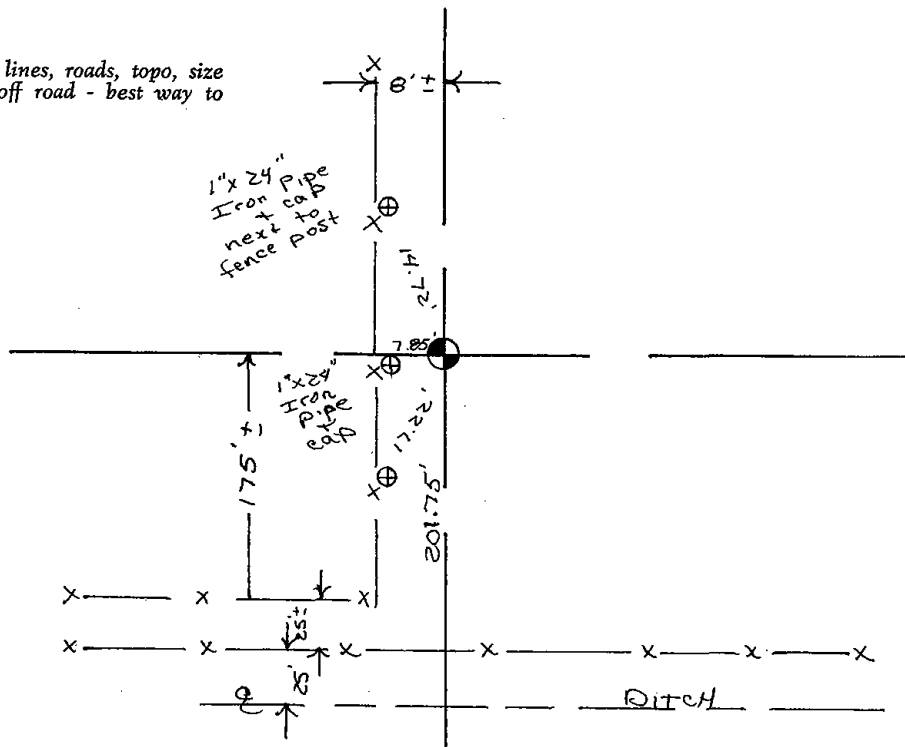
*Anthony B. Kiedrowski*  
Registered Land Surveyor

DATE: 9/3/81

## TIE SKETCH

Show at least four ties, also fence lines, roads, topo, size and type of witness trees and if off road - best way to arrive at corner.

*SEE TIE SHEET  
DND 7-7-92*

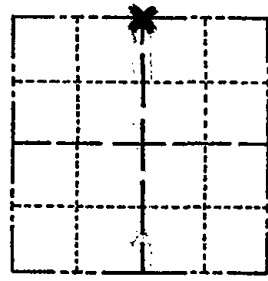




# Government Land Corner Certificate

ADAMS County  
 TYPE OF MONUMENT: Harrison Monument  
 STATE PLANE COORDINATES: N \_\_\_\_\_  
 E \_\_\_\_\_  
 ELEVATION — M.S.L. DATUM: \_\_\_\_\_  
 THETA ANGLE: \_\_\_\_\_  
 FIELD BOOK: 37 PAGE 56  
 DRAWN BY: \_\_\_\_\_

CORNER NO. 8  
 SECTION 3  
 TOWN 14  
 RANGE 7



LOCATION  
 (Indicated by 'X')

SEAL:



DATA SHOWN HERE ON  
 CERTIFIED CORRECT:

*Gregory P. Rhinehart*  
 Registered Land Surveyor

DATE: 7-7-92

## BASIS FOR MONUMENT LOCATION

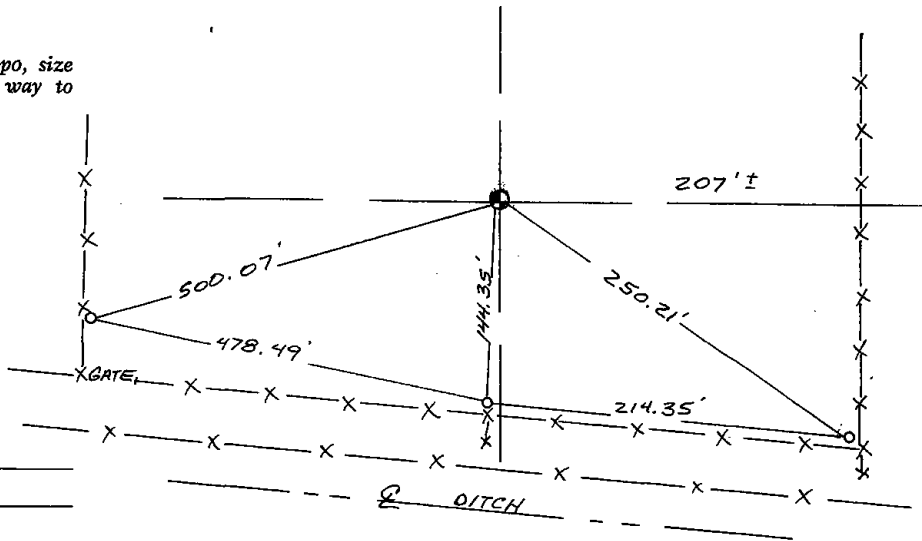
Show info such as: History of corner, with reference to Vol. and pg., dates, surveyor; exact description of monument replaced; if location computed, by taped or EDM traverse; landowner remarks, etc. (Use reverse side if necessary)

This corner set in 1981 by A.B.Kiedrowski, S-878. On July 7, 1992, the harrison monument was found undisturbed approximately 12" below the surface and the existing iron pipe witness monuments were relocated to the positions shown on this sheet at the request of the landowner, Arthur Jungenburg, Jr.

## TIE SKETCH

Show at least four ties, also fence lines, roads, topo, size and type of witness trees' and if off road - best way to arrive at corner.

o = 1" x 24" IRON PIPE / CAP  
 NEXT TO WOOD POST



## MAINTENANCE RECORD

Date	Init.	Remarks
11-29-95	SS	