

35 SECTION 15 TOWN 07 RANGE

ADAMS COUNTY

COUNTY CORNER NO: 131
 ROMPORTOL ID: 41507350000

PUBLIC LAND SURVEY MONUMENT RECORD

TYPE OF MONUMENT: HARRISON
 ADAMS COUNTY COORDINATES, NAD 83 (2007)

N. 132947.679

E. 583650.823

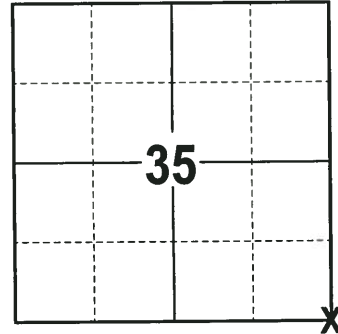
ELEVATION- _____ DATUM _____

FIELD WORK DATE: 10/03/2017

BASIS FOR MONUMENT LOCATION

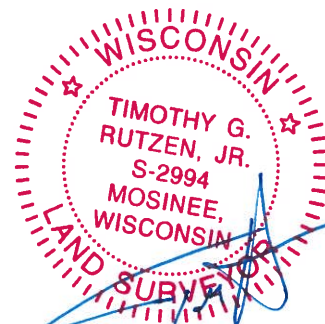
1981 - PLS 878 PER M.C. SMITH, IN 1916, PER VOL 2, PAGE 26 OF THE COUNTY SURVEYOR RECORDS VISITED THIS CORNER BUT HE COULD NOT FIND ANY MONUMENT. HE THEN USED THE FENCES THAT EXISTED AT THE TIME AS THE BEST AVAILABLE EVIDENCE OF THE CORNER LOCATION BUT DID NOT SET A MONUMENT. AFTER RUNNING THE NORTH LINE OF SECTIONS 1, 2, 3 AND TIEING INTO ALL OCCUPATION EVIDENCE. SET THE CORNER ON A STRAIGHT LINE BETWEEN THE NW OF SECTION 3 AND THE NORTHEAST OF SECTION 2 AT PRORATED DISTANCE.

2017 - PLS 2994 FOUND A HARRISON MONUMENT 4" BELOW THE ROAD SURFACE AND 1 WITNESS TREE. THE MONUMENT AGREES WITH THE EXISTING WITNESS TREE. ACCEPTED THE HARRISON MONUMENT AS THE CORNER LOCATION. SET 4 NEW TIES AND MEASURED TO THE TIES AND WITNESS TREE.



LOCATION
 (INDICATE CORNER BY "X")

SEAL:

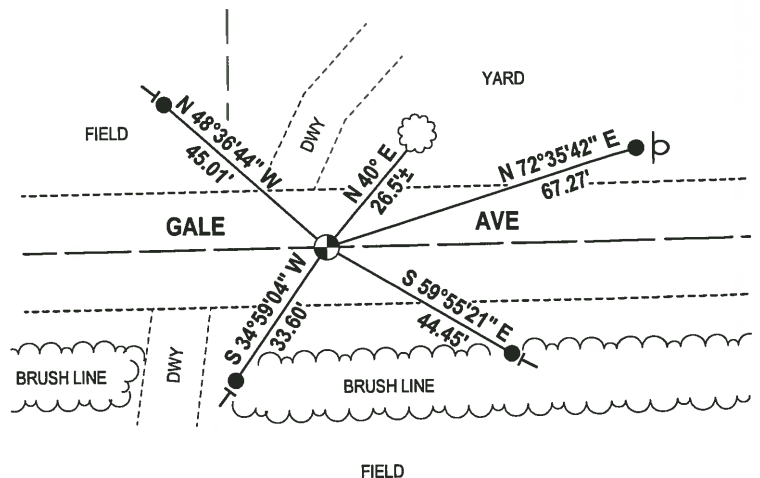
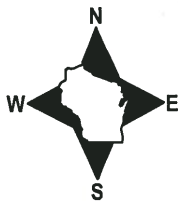


DATA SHOWN HERE ON THIS TIE SHEET IS CORRECT AND COMPLETE TO THE BEST OF MY KNOWLEDGE AND BELIEF.

PROFESSIONAL LAND SURVEYOR

DATE 12-21-17

- TIE SKETCH -

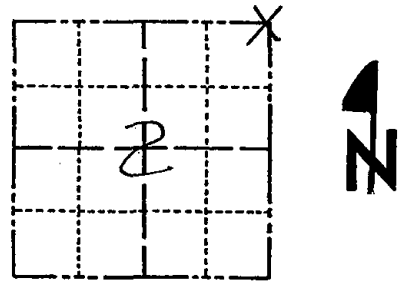


- 3/4" x 18" IRON REBAR SET, 1.50#/FT
- ⊙ HARRISON FOUND
- d SIGN (FIRE #204)
- └ VINYL "T" POST
- ☁ WITNESS TREE FOUND

Government Land Corner Certificate

ADAMS County
 TYPE OF MONUMENT: _____
 STATE PLANE COORDINATES: N _____
 E _____
 ELEVATION — M.S.L. DATUM: _____
 THETA ANGLE: _____
 FIELD BOOK: 76 PAGE 112
 DRAWN BY: SG NAUMSCHILD

CORNER NO. 11
 SECTION 2
 TOWN 14
 RANGE 7



LOCATION
(Indicated by 'X')

BASIS FOR MONUMENT LOCATION

Show info such as: History of corner, with reference to Vol. and pg., dates, surveyor; exact description of monument replaced; if location computed, by taped or EDM traverse; landowner remarks, etc. (Use reverse side if necessary)

M.C. Smith, in 1916, per Vol 2, page 26 of County surveyor records was at this corner but he could not find any monument. He then used the fences that existed at that time as the corner location but did not set any monument. I did likewise, after running the north line of sections 1, 2, and 3, tying into all occupation evidence. See basis for N₄ corner section 2.

SEAL:



DATA SHOWN HERE ON CERTIFIED CORRECT:

Anthony B. Kiedrowski
 Registered Land Surveyor

DATE: 9/3/81

TIE SKETCH

Show at least four ties, also fence lines, roads, topo, size and type of witness trees' and if off road - best way to arrive at corner.

