

PUBLIC LAND SURVEY MONUMENT RECORD

TYPE OF MONUMENT: 1-1/4" IRON ROD
ADAMS COUNTY COORDINATES, NAD 83 (2007)

N. 130058.415

E. 562562.544

ELEVATION- _____ DATUM _____

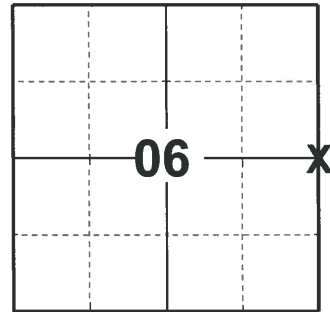
FIELD WORK DATE: 04/06/2020

BASIS FOR MONUMENT LOCATION

1979 - PLS 1478 SET HARRISON MONUMENT SINGLE PROPORTIONATE ON LINE BETWEEN ADJACENT SECTION CORNERS PER SECTION SUMMARY ON FILE BY FRED ZIETLOW. NO EVIDENCE OF ANY PREVIOUS MONUMENTATION WAS FOUND. THIS CORNER FALLS WITHIN A TILLED FIELD THUS THE LONG TIE DISTANCES.

2008 - PLS 2443 FRED ZIETLOW DETERMINED THE LOCATION OF THIS MONUMENT BY SINGLE PROPORTIONATE MEASUREMENT AS SHOWN ON A SECTION SUMMARY DATED 8-24-77, BUT NOTES HE DID NOT SET A MONUMENT. GREGORY RHINEHART SET THIS CORNER IN 12-10-79 BASED ON ZIETLOW'S SECTION SUMMARY. RHINEHART ALSO SET TIES AND FILED A TIE SHEET. THE CORNER FALLS IN AN OPEN FIELD. SEARCHED FOR RHINEHART'S MONUMENT AND TIES BUT DID NOT FIND THEM. PLACED THE MONUMENT ON A STRAIGHT LINE BETWEEN THE NE CORNER AND SE CORNER OF SECTION 6 USING PROPORTIONATE MEASUREMENTS BASED ON RHINEHART'S TIE SHEET INFORMATION. ALSO ESTABLISHED NEW TIES. THE REBAR IS BURIED 18" BELOW THE GRADE TO PROTECT IT FROM FARM MACHINERY.

2020 - PLS 2675 FOUND 1-1/4" IRON ROD 18"± BELOW THE FIELD SURFACE, 1 TIE AND 1 WITNESS. THE MONUMENT AGREES WITH THE EXISTING TIE AND WITNESS, ALSO VERIFIED THAT THE CORNER IS ON A NEAR STRAIGHT LINE AND RECORDED PRO RATED DISTANCES. ACCEPTED THE 1-1/4" IRON ROD AS THE CORNER LOCATION. MEASURED TO THE FOUND TIE AND WITNESS AND 2 EXISTING PROPERTY IRONS.



LOCATION
(INDICATE CORNER BY "X")

SEAL:

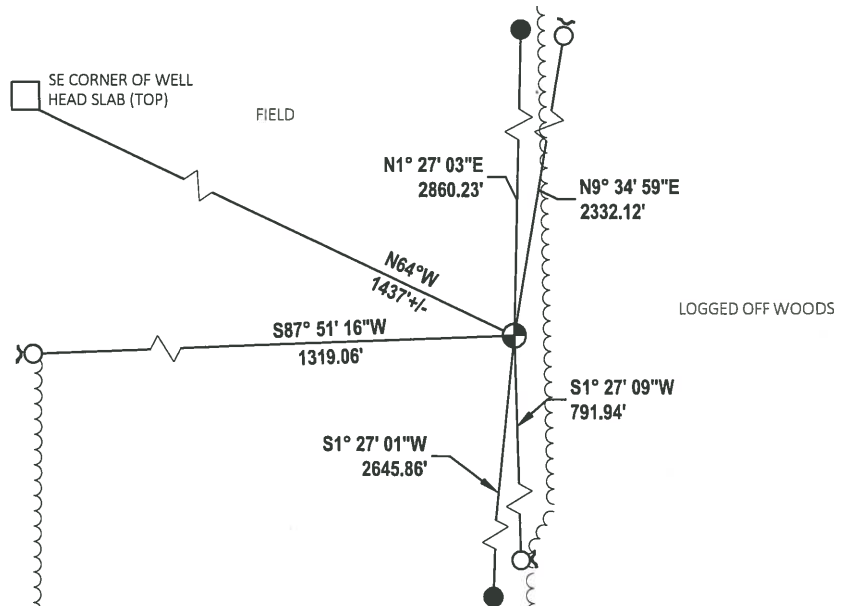


DATA SHOWN HERE ON THIS TIE SHEET IS CORRECT AND COMPLETE TO THE BEST OF MY KNOWLEDGE AND BELIEF.

PROFESSIONAL LAND SURVEYOR

DATE 5/21/2020

TIE SKETCH

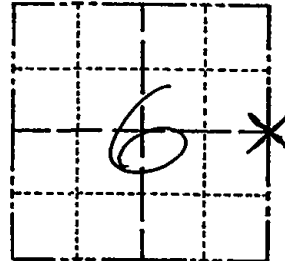


- FOUND HARRISON MONUMENT
- FOUND 3/4" IRON ROD
- ⊙ FOUND 1-1/4" IRON ROD MONUMENT
- ┌ STEEL FENCE POST

Government Land Corner Certificate

ADAMS County
 TYPE OF MONUMENT: HARRISON MONUMENT
 STATE PLANE COORDINATES: N _____
 E _____
 ELEVATION — M.S.L. DATUM: _____
 THETA ANGLE: _____
 FIELD BOOK: &\$ 74 PAGE 130
 DRAWN BY: G. RHINEHART

CORNER NO. 15
 SECTION 6
 TOWN 14
 RANGE 7



LOCATION
 (Indicated by 'X')

BASIS FOR MONUMENT LOCATION

Show info such as: History of corner, with reference to Vol. and pg., dates, surveyor; exact description of monument replaced; if location computed, by taped or EDM traverse; landowner remarks, etc. (Use reverse side if necessary)

SEAL:



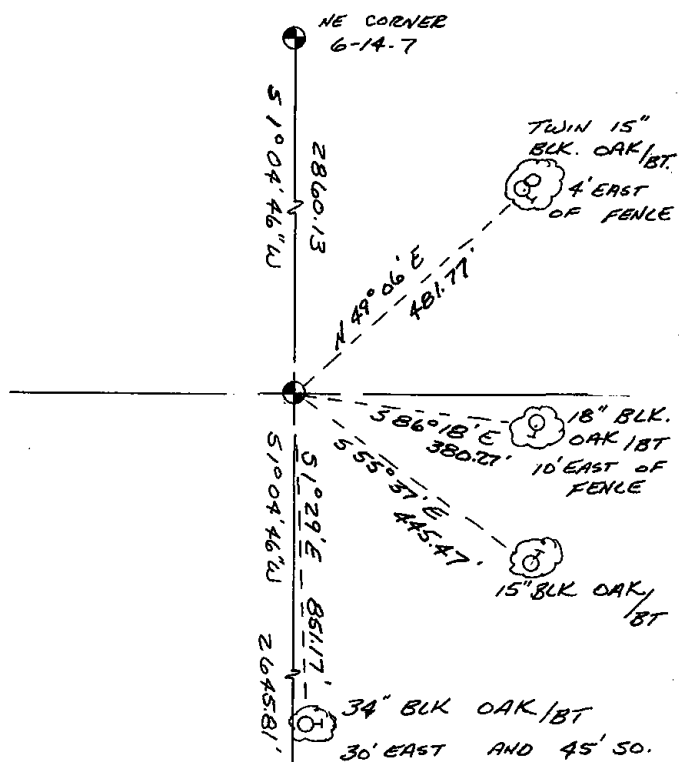
DATA SHOWN HERE ON
 CERTIFIED CORRECT:

Gregory P. Rhinehart
 Registered Land Surveyor

DATE: 12/10/79

TIE SKETCH

Show at least four ties, also fence lines, roads, topo, size and type of witness trees and if off road - best way to arrive at corner.



ADAMS COUNTY CERTIFIED U.S. PUBLIC LAND SURVEY MONUMENT RECORD

DATUM: NAD 83 (1991)	ADAMS COUNTY COORDINATES	
CONTROL: COMBINATION OF GPS AND CONVENTIONAL FIELD CONTROL	NORTH	130,058.49'
	EAST	562,562.59'

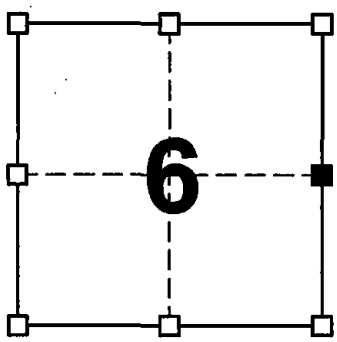
¹⁴
THE EAST QUARTER CORNER OF SECTION 6,
TOWN ~~15~~ NORTH, RANGE 7 EAST, TOWN OF
DELL PRAIRIE, ADAMS COUNTY, WISCONSIN

(A) IDENTIFY THE CORNER BY REFERENCE
TO THE U.S. PUBLIC LAND SURVEY SYSTEM

■ = CORNER MONUMENT RESTORED

WITNESS TO CORNER LOCATION:

- TODD T. RUMMLER
- TERRY M. PREM
- JASON A. PELOCK

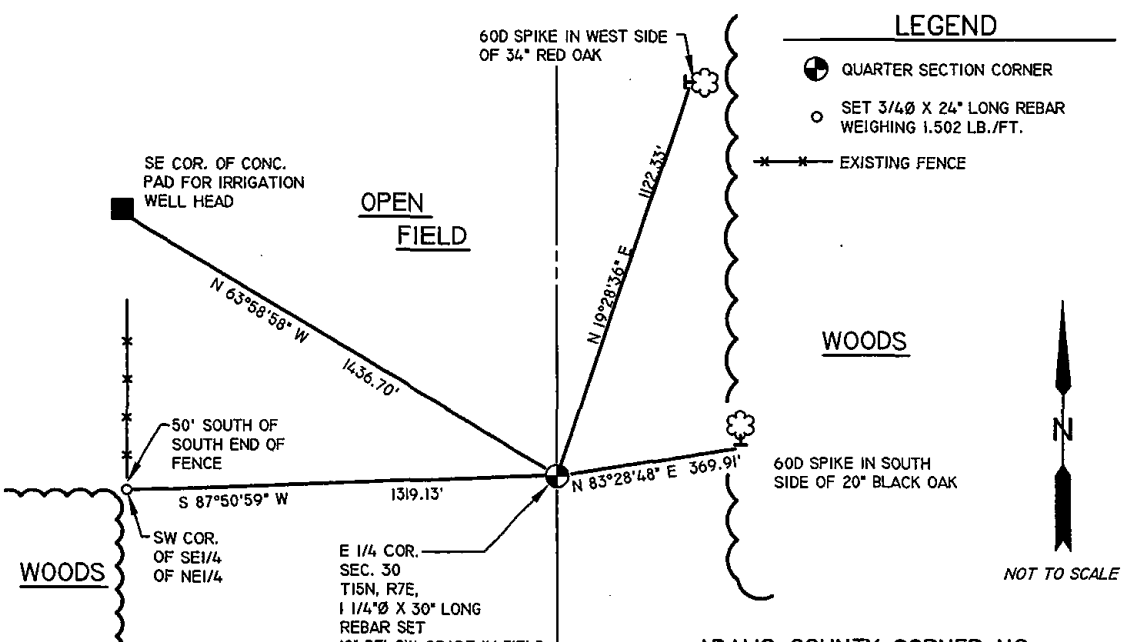


SECTION 6
TOWN ~~15~~ NORTH
RANGE 7 EAST 14

(B) DESCRIBE ANY RECORD EVIDENCE, MONUMENT EVIDENCE, OCCUPATIONAL EVIDENCE, TESTIMONIAL EVIDENCE OR ANY OTHER MATERIAL EVIDENCE YOU CONSIDERED, AND WHETHER THE MONUMENT WAS FOUND OR PLACED.

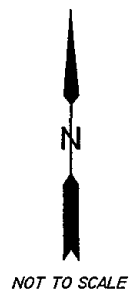
FRED ZIETLOW DETERMINED THE LOCATION OF THIS MONUMENT BY SINGLE PROPORTIONATE MEASUREMENT AS SHOWN ON A SECTION SUMMARY DATED 8-24-77, BUT NOTES HE DID NOT SET A MONUMENT. GREGORY RHINEHART SET THIS CORNER IN 12-10-79 BASED ON ZIETLOW'S SECTION SUMMARY. RHINEHART ALSO SET TIES AND FILED A TIE SHEET. THE CORNER FALLS IN AN OPEN FIELD. I SEARCHED FOR RHINEHART'S MONUMENT AND TIES BUT DID NOT FIND THEM. I PLACED THE MONUMENT ON A STRAIGHT LINE BETWEEN THE NORTHEAST CORNER AND SOUTHWEST CORNER OF SECTION 6 USING PROPORTIONATE MEASUREMENTS BASED ON RHINEHART'S TIE SHEET INFORMATION. I ALSO ESTABLISHED NEW TIES AS SHOWN. THE REBAR IS BURIED 18" BELOW GRADE TO PROTECT IT FROM FARM MACHINERY.

(C) IN THE PLAN VIEW DRAWING BELOW, PROVIDE REFERENCE TIES TO AT LEAST 4 WITNESS MONUMENTS OR, IF THE LOCATION IS WITHIN A MUNICIPALITY, TO AT LEAST 2 WITNESS MONUMENTS. (WITNESS MONUMENTS SHALL BE MADE ON CONCRETE, NATURAL STONE, IRON, OR OTHER EQUALLY DURABLE MATERIAL.) DESCRIBE WITNESS MONUMENTS.



LEGEND

- ⊕ QUARTER SECTION CORNER
- SET 3/4" X 24" LONG REBAR WEIGHING 1.502 LB./FT.
- *—*—* EXISTING FENCE



(D) DESCRIBE ANY MATERIAL DISCREPANCY BETWEEN THE LOCATION OF THE CORNER AS RESTORED OR REESTABLISHED AND THE LOCATION OF THAT CORNER AS PREVIOUSLY RESTORED OR REESTABLISHED BY DISTANCE AND DIRECTION. SHOW THE DISCREPANCY ON THE PLAN VIEW DRAWING UNDER (C), ABOVE. SHOW THE DISTANCES BETWEEN THE CORNER AS PREVIOUSLY RESTORED OR REESTABLISHED AND (1) THE CORNER AS RESTORED OR REESTABLISHED, AND (2) TO AT LEAST 2 OF THE WITNESS MONUMENTS AS SHOWN ON THE DRAWING IN (C), ABOVE.

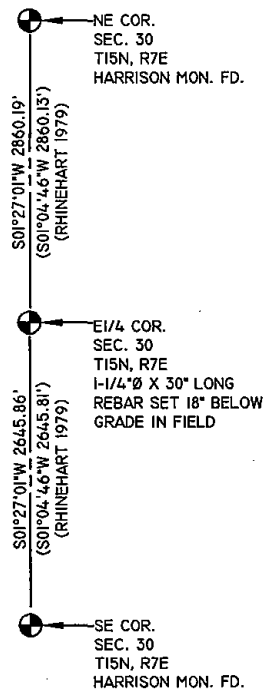
NONE

(E) WAS THE CORNER RESTORED THROUGH ACCEPTANCE OF (1) AN OBLITERATED EVIDENCE LOCATION, OR (2) A FOUND PERPETUATED LOCATION?

2.) A FOUND PERPETUATED LOCATION

(F & G) WAS THE CORNER REESTABLISHED THROUGH LOST CORNER PROPORTIONATE METHODS? IF SO SHOW THE METHOD, INCLUDING THE DIRECTION AND DISTANCE TO OTHER PUBLIC LAND SURVEY CORNERS USED AS EVIDENCE OR USED FOR PROPORTIONING IN DETERMINING THE CORNER LOCATION.

YES, SINGLE PROPORTIONATE MEASUREMENT.



AFFIX LAND SURVEYOR SEAL

(H) I, TODD T. RUMMLER, RLS-2443 CERTIFY THAT THE CORNER LOCATION SHOWN ON THIS RECORD WAS DETERMINED BY ME OR UNDER MY DIRECTION AND CONTROL AND THAT THIS U.S. PUBLIC LAND SURVEY MONUMENT RECORD IS CORRECT AND COMPLETE TO THE BEST OF MY KNOWLEDGE AND BELIEF.


 SIGNATURE

01-23-08
 DATE

