

## PUBLIC LAND SURVEY MONUMENT RECORD

TYPE OF MONUMENT: HARRISON  
ADAMS COUNTY COORDINATES, NAD 83 (2007)

N. 130036.782

E. 567821.496

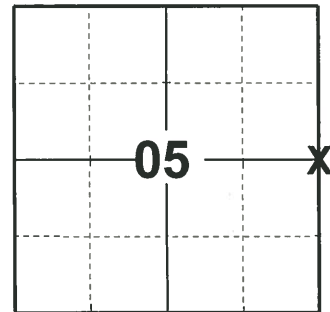
ELEVATION-        DATUM       

FIELD WORK DATE: 03/31/2020

### BASIS FOR MONUMENT LOCATION

1974 - PLS 922 USED EXISTING FOUR WAY FENCE CORNER, FIT EDM TRAVERSE GOOD.

2020 - PLS 2675 FOUND HARRISON MONUMENT 4"± ABOVE THE GROUND AND 2 WITNESS TREES. THE MONUMENT AGREES WITH BOTH WITNESS TREES. ACCEPTED THE HARRISON MONUMENT AS THE CORNER LOCATION. SET 4 NEW TIES AND MEASURED TO THE EXISTING WITNESS TREES.



**LOCATION**  
(INDICATE CORNER BY "X")

SEAL:

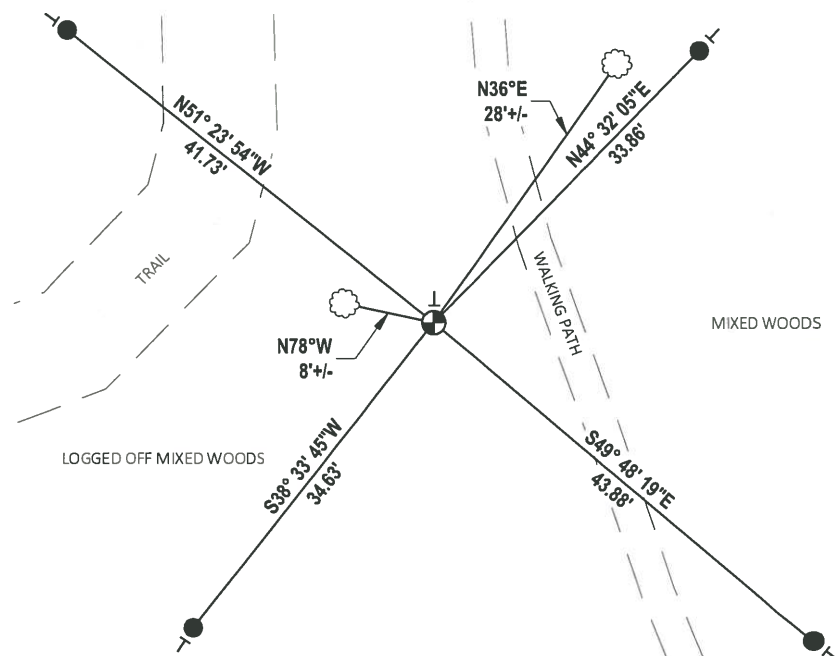
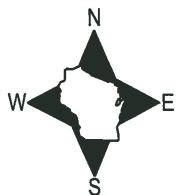


DATA SHOWN HERE ON THIS TIE SHEET IS CORRECT AND COMPLETE TO THE BEST OF MY KNOWLEDGE AND BELIEF.

PROFESSIONAL LAND SURVEYOR

DATE 5/21/2020

### - TIE SKETCH



- SET 3/4" x 18" IRON REBAR, 1.50#/FT
- ⊕ FOUND HARRISON MONUMENT
- VINYL "T" POST
- ☁ WITNESS TREE

# ADAMS COUNTY

## Survey Monument Record

TYPE OF MONUMENT: CAST IRON HARRISON

STATE PLANE COORDINATES: N \_\_\_\_\_

E \_\_\_\_\_

ELEVATION — M.S.L. DATUM: \_\_\_\_\_

THETA ANGLE: \_\_\_\_\_

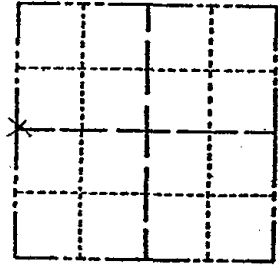
FIELD BOOK: \_\_\_\_\_ PAGE \_\_\_\_\_

CORNER NO. 502 <sup>(16)</sup>

SECTION 4

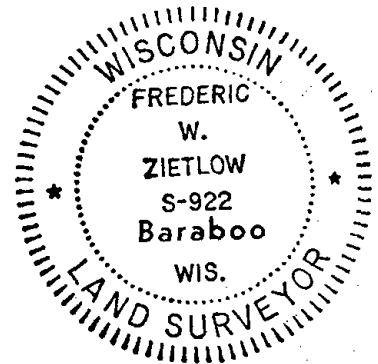
TOWN 14

RANGE 7



LOCATION  
(Indicated by 'X')

SEAL:



### BASIS FOR MONUMENT LOCATION

(Use reverse side if necessary)

Show info such as: History of corner, with reference to Vol. and pg. dates, surveyor; exact description of monument replaced; if location computed, by taped or EDM traverse; landowner remarks, etc.

USED EXISTING FOUR WAY  
FENCE CORNER FIT EDM.  
TRAVERSE GOOD

CORNER	O.K.	10-23-76	RN-SS
CORNER	OK	12-9-81	SK-DW
"	"	2-12-86	SR-SS
"	"	8-21-91	SS-JG
"	"	3-13-02	JG
1-GONE, 1-NEW		1-31-06	JG
OK		12-15-11	MS

CERTIFIED CORRECT:

*Frederic W. Zietlow*

Registered Land Surveyor

DATE: 9 SEPT. 1974

### TIE SKETCH

(Show at least four ties)

