

03
SECTION

14
TOWN

07
RANGE

ADAMS COUNTY

COUNTY CORNER NO: 18

ROMPORTOL ID: 41407032000

PUBLIC LAND SURVEY MONUMENT RECORD

TYPE OF MONUMENT: HARRISON
ADAMS COUNTY COORDINATES, NAD 83 (2007)

N. 129872.023

E. 578351.479

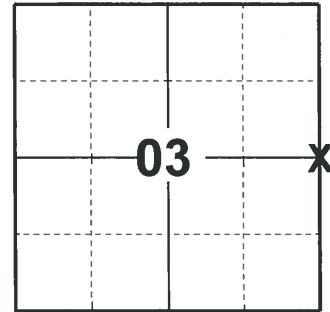
ELEVATION- DATUM

FIELD WORK DATE: 03/30/2020

BASIS FOR MONUMENT LOCATION

1982 - PLS 1444 HARRISON WAS SET ON LINE AND SINGLE PROPORTIONATE MEASURE BETWEEN ADJACENT SECTION CORNERS. NO EVIDENCE OF ORIGINAL CORNERS OR BEARING TREES.

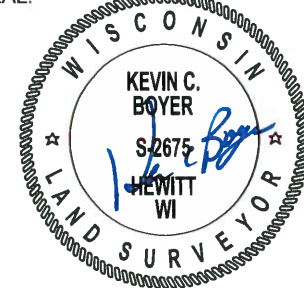
2020 - PLS 2675 FOUND HARRISON MONUMENT 2"± BELOW THE ROAD SURFACE AND 2 TIES. THE MONUMENT AGREES WITH BOTH TIES. ACCEPTED THE HARRISON MONUMENT AS THE CORNER LOCATION. SET 3 NEW TIES AND MEASURED TO THE EXISTING TIES.



LOCATION

(INDICATE CORNER BY "X")

SEAL:



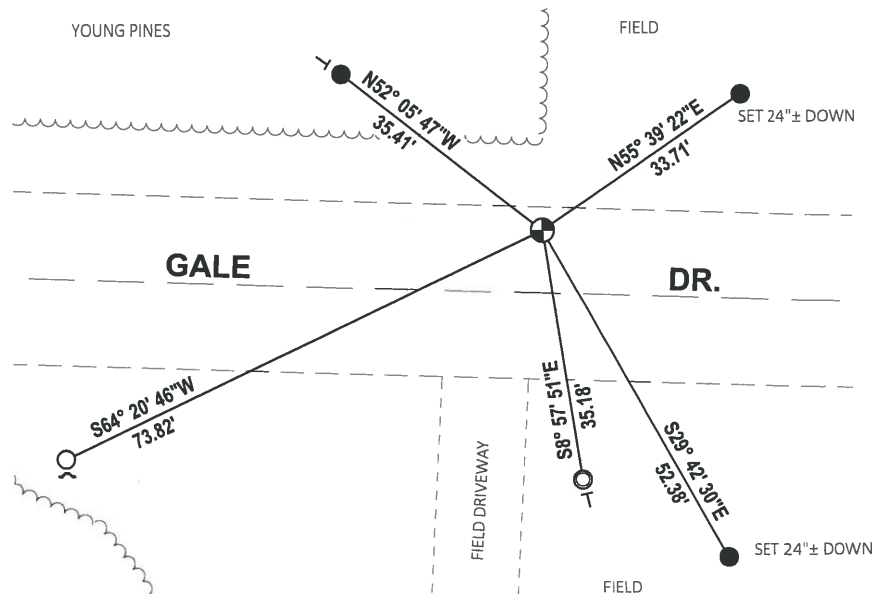
DATA SHOWN HERE ON THIS TIE SHEET IS CORRECT AND COMPLETE TO THE BEST OF MY KNOWLEDGE AND BELIEF.

PROFESSIONAL LAND SURVEYOR

DATE 5/21/2020

- TIE SKETCH

NOTE: THE CORNER LANDS 8.7'± NORTH OF GALE DR. CENTERLINE

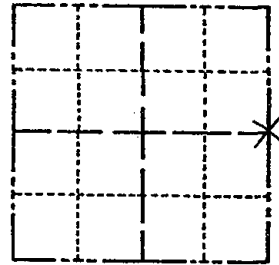


- SET 3/4" x 18" IRON REBAR, 1.50#/FT
- FOUND 3/4" IRON ROD
- FOUND 1-1/4" O.D. IRON PIPE
- ⊙ FOUND HARRISON MONUMENT
- ┘ STEEL FENCE POST
- └ VINYL "T" POST

Government Land Corner Certificate

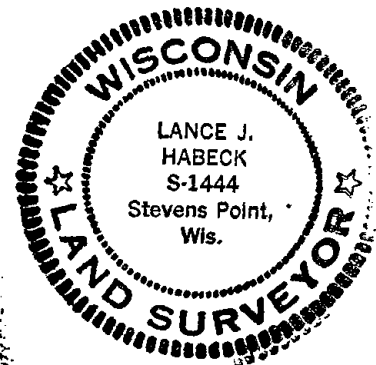
ADAMS County
 TYPE OF MONUMENT: HARRISON
 STATE PLANE COORDINATES: N _____
 E _____
 ELEVATION — M.S.L. DATUM: _____
 THETA ANGLE: _____
 FIELD BOOK: 92 PAGE 58
 DRAWN BY: SJH

CORNER NO. 18
 SECTION 3
 TOWN 14
 RANGE 7



LOCATION
(Indicated by 'X')

SEAL:



DATA SHOWN HERE ON
CERTIFIED CORRECT:

Lance J. Habeck
Registered Land Surveyor

DATE: 5/3/82

TIE SKETCH

Show at least four ties, also fence lines, roads, topo, size and type of witness trees and if off road - best way to arrive at corner.

