

## PUBLIC LAND SURVEY MONUMENT RECORD

TYPE OF MONUMENT: HARRISON  
ADAMS COUNTY COORDINATES, NAD 83 (2007)

N. 127413.403

E. 562495.583

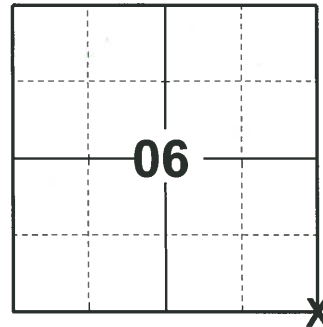
ELEVATION-      DATUM     

FIELD WORK DATE: 03/31/2020

### BASIS FOR MONUMENT LOCATION

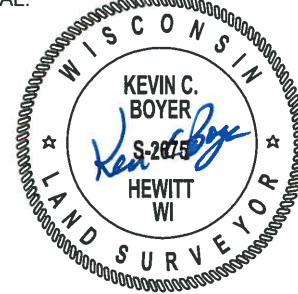
1977 - PLS 922 ORIGINAL SUBDIVISION OF T14N-R7E WAS SURVEYED BY CHARLES PHIPPS IN JULY OF 1851. PLS 922 RECOVERED ONE OF HIS BEARING TREES AND 18" WHITE OAK N82 1/4°E 37 LINKS FROM THE SECTION CORNER. THE TREE WAS GROWING IN WELL DRAINED SANDY SOILS IT HAD A GROWTH RATE OF 10 YEARS PER INCH. PLS 922 BACKED OUT THE RECORD TIE AND MONUMENTED SAME. EDM-THEODOLITE TRAVERSE OF ENTIRE SECTION FIT WELL COMPARED TO ORIGINAL.

2020 - PLS 2675 FOUND HARRISON FLUSH WITH THE GROUND AND 2 WITNESSES. THE MONUMENT AGREES WITH BOTH WITNESSES. ACCEPTED THE HARRISON AS THE CORNER LOCATION. SET 4 NEW TIES AND MEASURED TO THE EXISTING WITNESSES.



LOCATION  
(INDICATE CORNER BY "X")

SEAL:



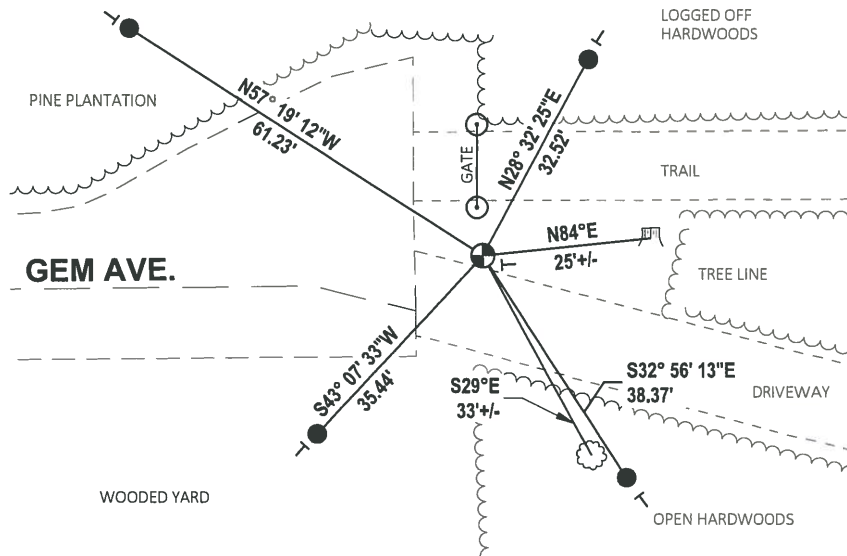
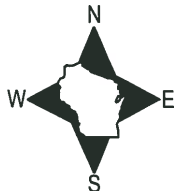
DATA SHOWN HERE ON THIS TIE SHEET IS CORRECT AND COMPLETE TO THE BEST OF MY KNOWLEDGE AND BELIEF.

PROFESSIONAL LAND SURVEYOR

DATE 5/21/2020

### - TIE SKETCH

NOTE: THE CORNER LANDS 10'± EAST OF THE EDGE OF ASPHALT OF GEM AVE.



- SET 3/4" x 18" IRON REBAR, 1.50#/FT
- ⊕ FOUND HARRISON MONUMENT
- ┆ VINYL "T" POST
- ☼ WITNESS TREE
- ▭ WITNESS STUMP

ADAMS COUNTY

Survey Monument Record

TYPE OF MONUMENT: 30" STANDARD HARRISON

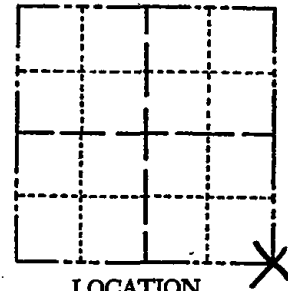
STATE PLANE COORDINATES: N \_\_\_\_\_  
E \_\_\_\_\_

ELEVATION — M.S.L. DATUM: \_\_\_\_\_

THETA ANGLE: \_\_\_\_\_

FIELD BOOK: 486 PAGE 54

CORNER NO. 23  
SECTION 6  
TOWN 14N  
RANGE 7E



LOCATION  
(Indicated by 'X')

SEAL:

BASIS FOR MONUMENT LOCATION

(Use reverse side if necessary)

Show info such as: History of corner, with reference to Vol. and pg. dates, surveyor; exact description of monument replaced; if location computed, by taped or EDM traverse; landowner remarks, etc.

FOUND ORIGINAL BEARING TREE  
& RESET CORNER FROM GOV'T  
TIES. EDM TRAVERSE  
Ties O.K. 12-9-81 SK-DW  
COR. OK 12/6/95 JG-SS  
COR OK 6/11/01-JG  
OK, 2-8-06-JG  
" 2-25-11 SS



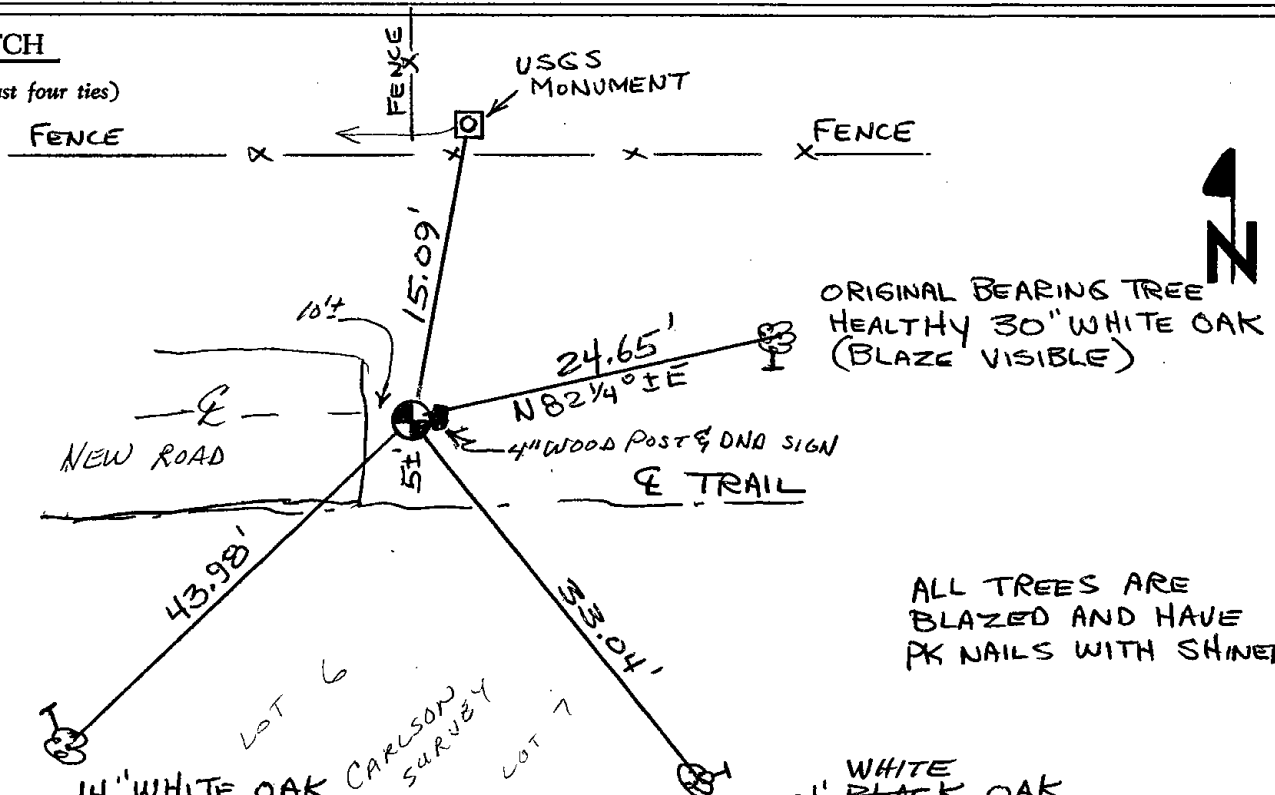
CERTIFIED CORRECT:

*Frederic W. Zietlow*  
Registered Land Surveyor

DATE: AUGUST 24, 1977

TIE SKETCH

(Show at least four ties)



ALL TREES ARE  
BLAZED AND HAVE  
PK NAILS WITH SHINERS

WHITE  
BLACK OAK

# Government Land Corner Certificate

ADAMS County

TYPE OF MONUMENT: 30" Standard Cast Iron Harrison

STATE PLANE COORDINATES: N \_\_\_\_\_  
E \_\_\_\_\_

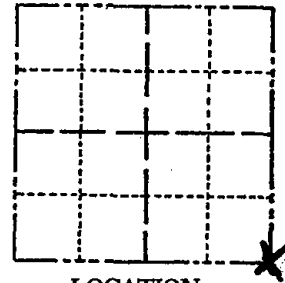
ELEVATION — M.S.L. DATUM: \_\_\_\_\_

THETA ANGLE: \_\_\_\_\_

FIELD BOOK: 486 PAGE 53

DRAWN BY: Squires

CORNER NO. 23  
SECTION 6  
TOWN 14N  
RANGE 7E



LOCATION  
(Indicated by 'X')

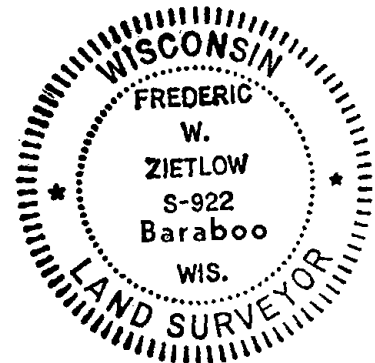
## BASIS FOR MONUMENT LOCATION

Show info such as: History of corner, with reference to Vol. and pg., dates, surveyor; exact description of monument replaced; if location computed, by taped or EDM traverse; landowner remarks, etc. (Use reverse side if necessary)

Original subdivision of T14N-R7E was surveyed by Charles Phipps in July of 1851. I recovered one of his bearing trees and 18" white oak N82 1/4° E 37 links from the section corner. The tree was growing in well drained sandy soils it had a growth rate of 10 years per inch. The original base was faintly visible. I backed out the record tie and monumented same.

EDM - Theodolite traverse of entire section fit well compared to original.

SEAL:



DATA SHOWN HERE ON  
CERTIFIED CORRECT:

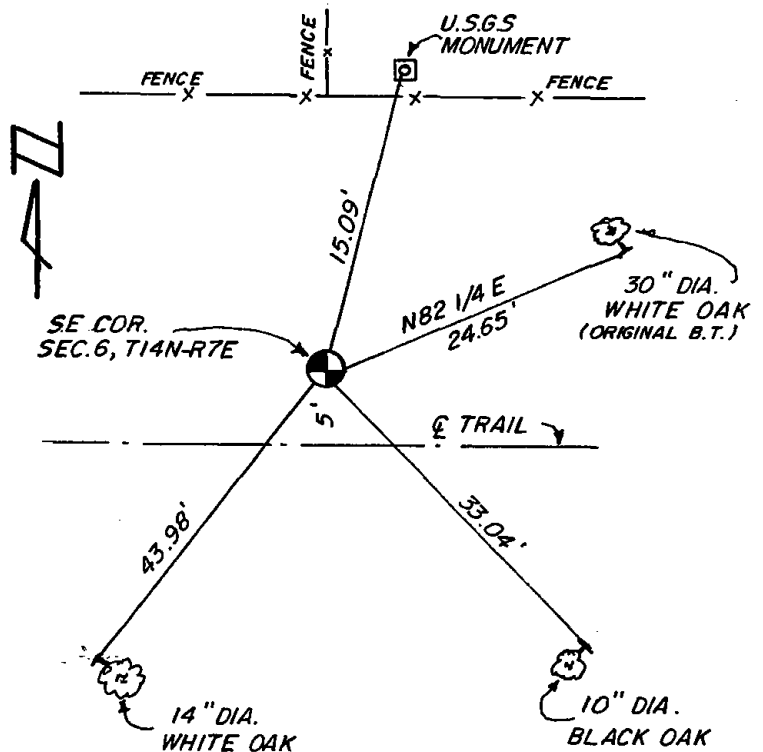
*Frederic W. Zietlow*  
Registered Land Surveyor

DATE: August 24, 1977

## TIE SKETCH

Show at least four ties, also fence lines, roads, topo, size and type of witness trees and if off road - best way to arrive at corner.

T = NAIL AND CAP IN BLAZE  
ON TREE TO WHICH MEASUREMENTS  
ARE MADE TO



## MAINTENANCE RECORD

Date	Init.	Remarks
3-6-86	GR-SS	O.K.
8-22-91	JG-SS	O.K.