

04  
SECTION

14  
TOWN

07  
RANGE

# ADAMS COUNTY

COUNTY CORNER NO.: 26

ROMPORTOL ID: 41407040020

## PUBLIC LAND SURVEY MONUMENT RECORD

TYPE OF MONUMENT: HARRISON  
ADAMS COUNTY COORDINATES, NAD 83 (2007)

N. 127335.245

E. 570375.166

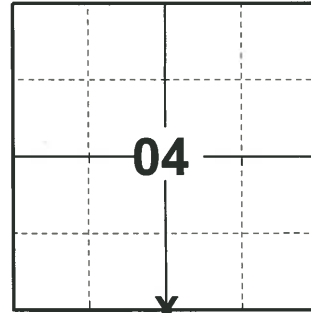
ELEVATION: - - - - DATUM - - - -

FIELD WORK DATE: 03/31/2020

### BASIS FOR MONUMENT LOCATION

1974 - PLS 922 USED EXISTING 3 WAY FENCE CORNER, FIT EDM TRAVERSE GOOD.

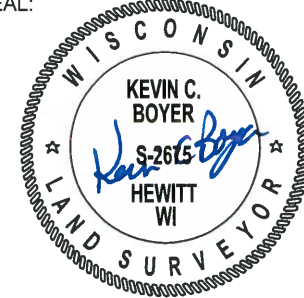
2020 - PLS 2675 FOUND HARRISON 2"± ABOVE THE GROUND SURFACE AND 2 WITNESS TREES. THE MONUMENT AGREES WITH BOTH WITNESSES. ACCEPTED THE HARRISON MONUMENT AS THE CORNER LOCATION SET 4 NEW TIES AND MEASURED TO THE EXISTING WITNESS TREES.



**LOCATION**

(INDICATE CORNER BY "X")

SEAL:

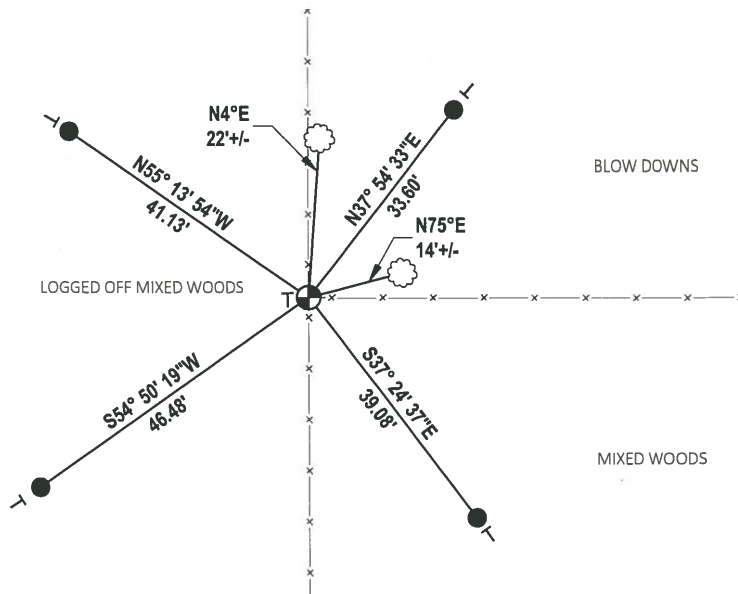
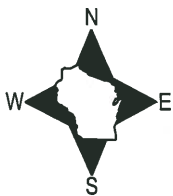


DATA SHOWN HERE ON THIS TIE SHEET IS CORRECT AND COMPLETE TO THE BEST OF MY KNOWLEDGE AND BELIEF.

PROFESSIONAL LAND SURVEYOR

DATE 5/21/2020

### - TIE SKETCH



- SET 3/4" x 18" IRON REBAR, 1.50#/FT
- ⊕ FOUND HARRISON MONUMENT
- VINYL "T" POST
- ☁ WITNESS TREE

# ADAMS COUNTY

## Survey Monument Record

TYPE OF MONUMENT: CAST IRON MON.

STATE PLANE COORDINATES: N \_\_\_\_\_

E \_\_\_\_\_

ELEVATION — M.S.L. DATUM: \_\_\_\_\_

THETA ANGLE: \_\_\_\_\_

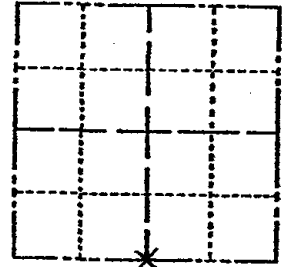
FIELD BOOK: \_\_\_\_\_ PAGE \_\_\_\_\_

CORNER NO. 501 <sup>26</sup>

SECTION 4

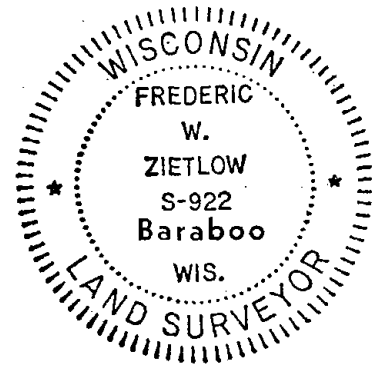
TOWN 14

RANGE 7



LOCATION  
(Indicated by 'X')

SEAL:



### BASIS FOR MONUMENT LOCATION

(Use reverse side if necessary)

Show info such as: History of corner, with reference to Vol. and pg, dates, surveyor; exact description of monument replaced; if location computed, by taped or EDM traverse; landowner remarks, etc.

USED EXISTING 3 WAY FENCE CORNER, FIT EDM TRAVERSE GOOD.

|             |          |       |
|-------------|----------|-------|
| CORNER O.K. | 12-23-76 | SK-DW |
| CORNER O.K. | 12-9-81  | SK-DW |
| " "         | 3-6-86   | GA-TS |
| " "         | 8-22-91  | SS    |
| " "         | 11-5-96  | SS    |
| " "         | 3-13-02  | JG    |

1- NEW TILE, 2-8-06 - JG  
1-GONE, 1 NEW 12-15-11 MS

CERTIFIED CORRECT:

*Frederic W. Zietlow*

Registered Land Surveyor

DATE: 9 SEPT. 1974

### TIE SKETCH *Enter thru corner*

(Show at least four ties)

WOOD MARKERS  
WILL BE USED TO  
OF 1/4" DIA  
SIGN FACES NORTH

