

PUBLIC LAND SURVEY MONUMENT RECORD

TYPE OF MONUMENT: HARRISON
 ADAMS COUNTY COORDINATES, NAD 83 (2007)

N. 124766.421

E. 562526.611

ELEVATION- DATUM

FIELD WORK DATE: 04/09/2020

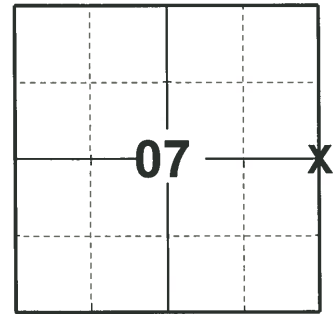
BASIS FOR MONUMENT LOCATION

1979 - PLS 1478 SET EQUIDISTANT AND ON LINE BETWEEN ADJACENT SECTION CORNERS. NO EVIDENCE OF ANY PREVIOUS MONUMENTATION WAS FOUND. NO RECORD OF ANY MONUMENTATION SUBSEQUENT TO THE ORIGINAL WAS FOUND.

1981 - PLS 742 FOUND HARRISON PREVIOUSLY SET BY RHINEHART DATED 12/31/79 NOT TO BE ON LINE AND EQUIDISTANT BETWEEN SECTION CORNERS AS WAS INTENDED. SET HARRISON ON LINE AND EQUIDISTANT BETWEEN SE AND NE CORNERS.

TAKE TRAIL WEST OF FIRE NO. 611. GO RIGHT AT FIRST INTERSECTION, LEFT AT SECOND INTERSECTION, CORNER SOUTH OF TRAIL 40'±.

2020 - PLS 2675 FOUND HARRISON 4"± ABOVE THE GROUND AND DID NOT RECOVER ANY TIES OR WITNESSES DUE TO RECENT LOGGING. VERIFIED THE MONUMENT IS NEAR ON LINE AND EQUIDISTANT BETWEEN ADJACENT SECTION CORNERS. ACCEPTED THE HARRISON AS THE BEST EVIDENCE OF THE CORNER LOCATION. SET 4 NEW TIES.



LOCATION
 (INDICATE CORNER BY "X")

SEAL:



DATA SHOWN HERE ON THIS TIE SHEET IS CORRECT AND COMPLETE TO THE BEST OF MY KNOWLEDGE AND BELIEF.

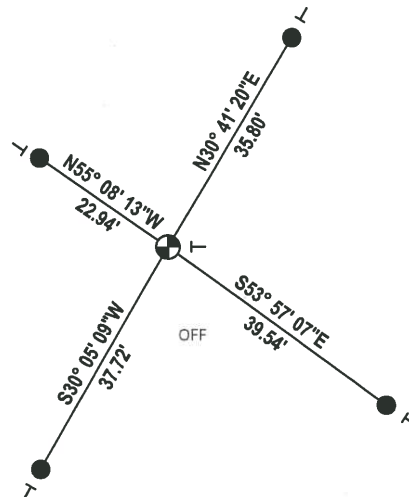
PROFESSIONAL LAND SURVEYOR

DATE 5/21/2020

- TIE SKETCH



LOGGED



HARDWOODS

- SET 3/4" x 18" IRON REBAR, 1.50#/FT
- ⊕ FOUND HARRISON MONUMENT
- T VINYL "T" POST

ADAMS COUNTY

Survey Monument Record

TYPE OF MONUMENT: Harrison

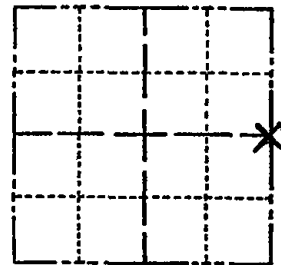
STATE PLANE COORDINATES: N _____
E _____

ELEVATION — M.S.L. DATUM: _____

THETA ANGLE: _____

FIELD BOOK: _____ PAGE _____

CORNER NO. 35
SECTION 7
TOWN 14
RANGE 7



LOCATION
(Indicated by 'X')

SEAL:



CERTIFIED CORRECT:

Kenneth G. Carlson
Registered Land Surveyor

DATE: 12/8/81

BASIS FOR MONUMENT LOCATION

(Use reverse side if necessary)

Show info such as: History of corner, with reference to Vol. and pg, dates, surveyor; exact description of monument replaced; if location computed, by taped or EDM traverse; landowner remarks, etc.

Found harrison previously set by Rhinehart dated 12/31/79 not to be on line and equidistant between section corners as was intended. Set harrison on line and equidistant between SE and NE corners.

ALL O.K. GR-SS 3-20-86

" " SS-JG 8-26-91

OK 3-13-02 SS

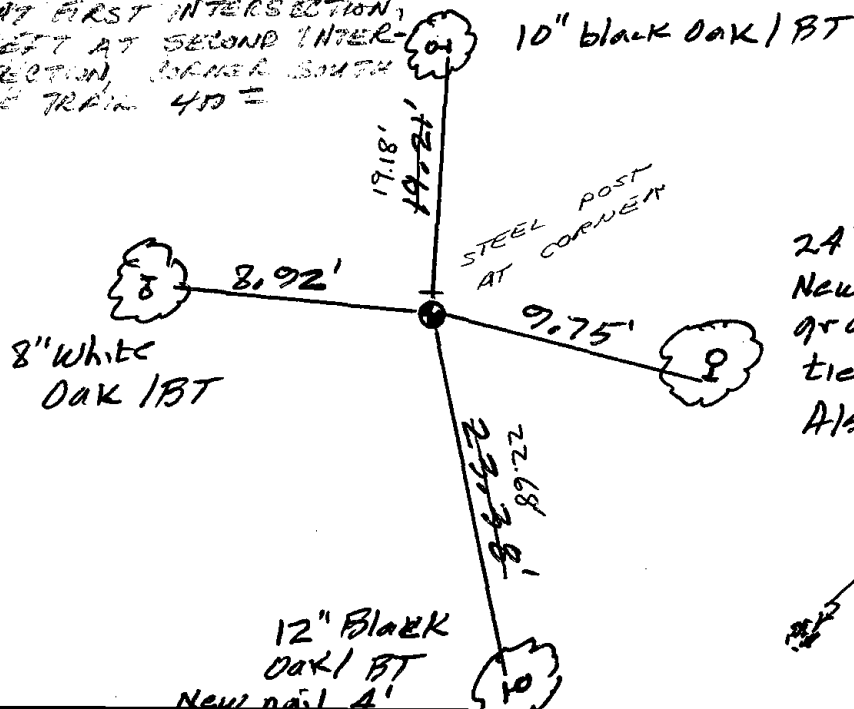
OK, 2-8-06, ALL TREES HAVE SIGNS - JG

2 NEW 12-18-11 MS

TIE SKETCH

(Show at least four ties)

TAKE TRAIL WEST OF
FIRE NO. 611. GO RIGHT
AT FIRST INTERSECTION,
LEFT AT SECOND INTER-
SECTION, TURNED SOUTH
OF TRAIL 40'



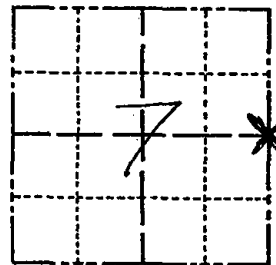
24" Black Oak / BT
New nail 3' above
ground in previous
tie tree
Also sign here now

Previous location
of harrison

Government Land Corner Certificate

ADAMS County
 TYPE OF MONUMENT: HARRISON Mon
 STATE PLANE COORDINATES: N _____
 E _____
 ELEVATION — M.S.L. DATUM: _____
 THETA ANGLE: _____
 FIELD BOOK: 83 PAGE 22
 DRAWN BY: RHINEHART

CORNER NO. 35
 SECTION 7
 TOWN 14
 RANGE 7



LOCATION
 (Indicated by 'X')

SEAL:



BASIS FOR MONUMENT LOCATION

Show info such as: History of corner, with reference to Vol. and pg., dates, surveyor; exact description of monument replaced; if location computed, by taped or EDM traverse; landowner remarks, etc. (Use reverse side if necessary)

Set equidistant and on line between adjacent section corners. No evidence of any previous monumentation was found. No record of any monumentation subsequent to the original was found.

DATA SHOWN HERE ON
 CERTIFIED CORRECT:

Gregory P Rhinehart
 Registered Land Surveyor

DATE: 12/31/79

TIE SKETCH

Show at least four ties, also fence lines, roads, topo, size and type of witness trees' and if off road - best way to arrive at corner.

