

08
SECTION

14
TOWN

07
RANGE

ADAMS COUNTY

COUNTY CORNER NO: 36
ROMPORTOL ID: 41407082000

PUBLIC LAND SURVEY MONUMENT RECORD

TYPE OF MONUMENT: HARRISON
ADAMS COUNTY COORDINATES, NAD 83 (2007)

N. 124734.898

E. 567766.362

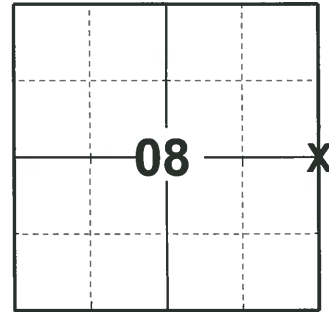
ELEVATION- DATUM

FIELD WORK DATE: 04/08/2020

BASIS FOR MONUMENT LOCATION

1979 - PLS 1267 FOUND BT'S FROM ORIGINAL NOTES AND SET HARRISON FROM TIES AS GIVEN IN NOTES. TRAVERSED SECTION BY EDM & T 2 TO VERIFY CORNER.

2020 - PLS 2675 FOUND HARRISON 4"± ABOVE THE GROUND AND THE ORIGINAL BT STUMP AND 2 WITNESS TREES. THE MONUMENT AGREES WITH THE BT STUMP AND BOTH WITNESS TREES. ACCEPTED THE HARRISON AS THE CORNER LOCATION. SET 4 NEW TIES AND MEASURED TO THE ORIGINAL BT STUMP AND WITNESS TREES.



LOCATION
(INDICATE CORNER BY "X")

SEAL:



DATA SHOWN HERE ON THIS TIE SHEET IS CORRECT AND COMPLETE TO THE BEST OF MY KNOWLEDGE AND BELIEF.

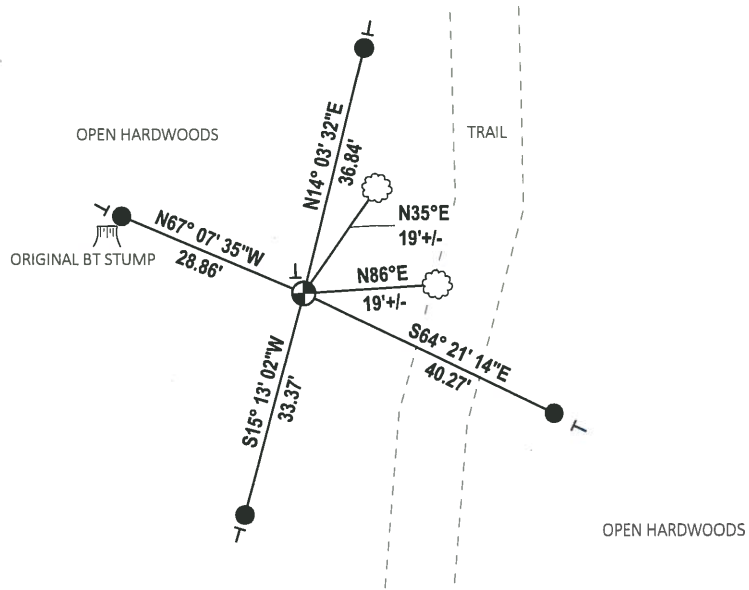
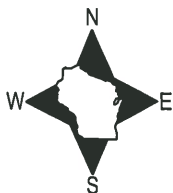
PROFESSIONAL LAND SURVEYOR

DATE 5/21/2020

- TIE SKETCH

NOTE: THE CORNER LANDS 20'± WEST OF THE TRAIL.

NOTE: REBAR SET ON EDGE OF ORIGINAL BT STUMP

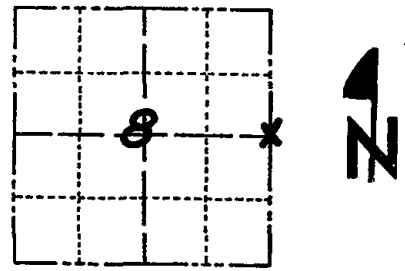


- SET 3/4" x 18" IRON REBAR, 1.50#/FT
- ⊙ FOUND HARRISON MONUMENT
- VINYL "T" POST
- ⊗ WITNESS TREE

Government Land Corner Certificate

ADAMS County
 TYPE OF MONUMENT: STANDARD HARRISON
 STATE PLANE COORDINATES: N _____
 E _____
 ELEVATION — M.S.L. DATUM: _____
 THETA ANGLE: _____
 FIELD BOOK: _____ PAGE _____
 DRAWN BY: _____

CORNER NO. 36
 SECTION 8
 TOWN 14 N
 RANGE 7 E



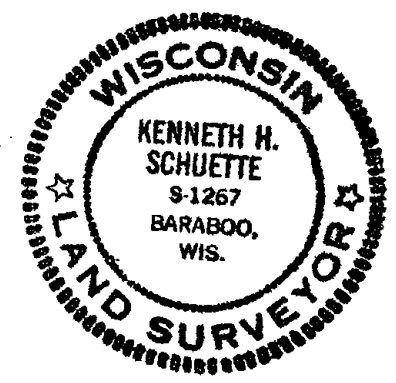
LOCATION
(Indicated by 'X')

BASIS FOR MONUMENT LOCATION

Show info such as: History of corner, with reference to Vol. and pg., dates, surveyor; exact description of monument replaced; if location computed, by taped or EDM traverse; landowner remarks, etc. (Use reverse side if necessary)

*Found Bt's from Original Notes
 AND SET HARRISON FROM TIES
 AS GIVEN IN NOTES. TRAVERSED
 SECTION BY EDM & T-2 TO
 VERIFY CORNER.*

SEAL:



DATA SHOWN HERE ON
 CERTIFIED CORRECT:

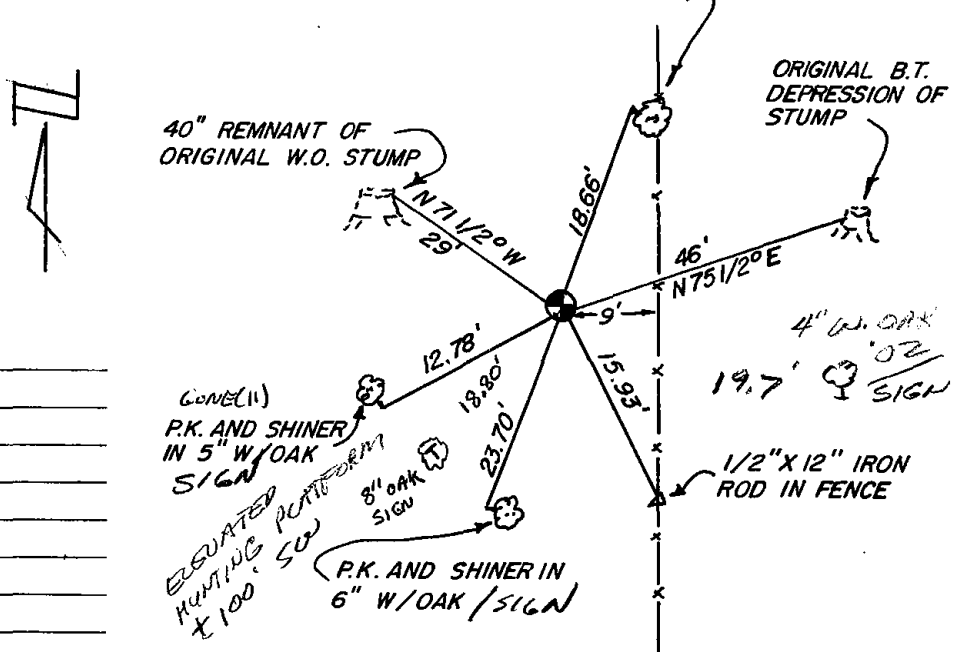
Ken Schuette
 Registered Land Surveyor

DATE: 12 July 1979

TIE SKETCH

Show at least four ties, also fence lines, roads, topo, size and type of witness trees' and if off road - best way to arrive at corner.

*CORNER FALLS IN
 30'± DEEP DEPRESSION
 600'± SOUTH OF LAKE
 P.K. AND SHINER IN
 9" W/OAK SIGN*



MAINTENANCE RECORD

Date	Init.	Remarks
12-10-81	SK-DW	Ties o.k.
3-6-86	GR-SS	" "
3-26-91	SS	" "
11-5-96	JG	ALL OK
3-12-02	SS	1 NEW TIE
2-8-06	JG	OK
12-15-11	MS	1 GOVE, 1 NEW