

11
SECTION

14
TOWN

07
RANGE

ADAMS COUNTY

COUNTY CORNER NO.: 39
ROMPORTOL ID: 41407112000

PUBLIC LAND SURVEY MONUMENT RECORD

TYPE OF MONUMENT: HARRISON
ADAMS COUNTY COORDINATES, NAD 83 (2007)

N. 124606.245

E. 583587.331

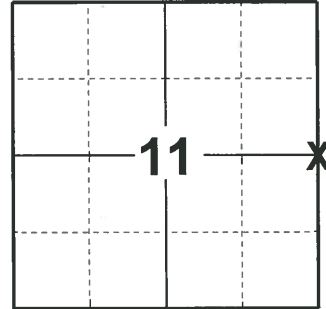
ELEVATION- DATUM

FIELD WORK DATE: 04/07/2020

BASIS FOR MONUMENT LOCATION

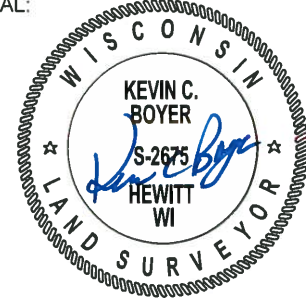
1974 - PLS 922 INDEFINITE EVIDENCE OF GOOD OCCUPATION AT THIS CORNER. SET CORNER EQUIDISTANT BETWEEN NORTHEAST CORNER AND SOUTHEAST CORNER.

2020 - PLS 2675 FOUND HARRISON FLUSH WITH THE GROUND AND DID NOT RECOVER ANY TIES OR WITNESSES. VERIFIED MONUMENT IS NEAR EQUIDISTANT BETWEEN ADJACENT CORNERS. ACCEPTED THE HARRISON AS THE BEST EVIDENCE OF THE CORNER LOCATION. SET 4 NEW TIES.



LOCATION
(INDICATE CORNER BY "X")

SEAL:



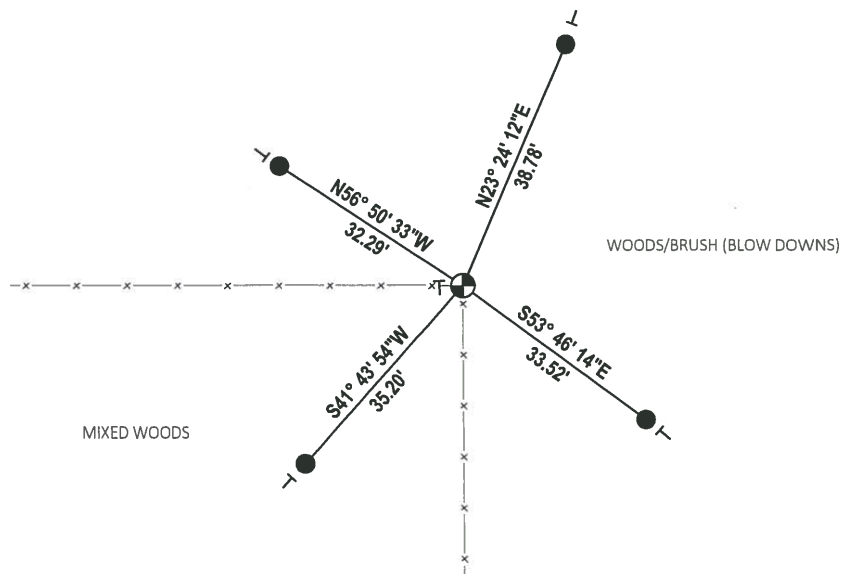
DATA SHOWN HERE ON THIS TIE SHEET IS CORRECT AND COMPLETE TO THE BEST OF MY KNOWLEDGE AND BELIEF.

PROFESSIONAL LAND SURVEYOR

DATE 5/21/2020

- TIE SKETCH

NOTE: FENCE IS REMNANTS OF FENCE



- SET 3/4" x 18" IRON REBAR, 1.50#/FT
- ⊕ FOUND HARRISON MONUMENT
- ⊥ VINYL "T" POST

ADAMS COUNTY

Survey Monument Record *Harrison set 5-8-75*

TYPE OF MONUMENT: 2" IRON PIPE IN CONCRETE

STATE PLANE COORDINATES: N _____

E _____

ELEVATION — M.S.L. DATUM: _____

THETA ANGLE: _____

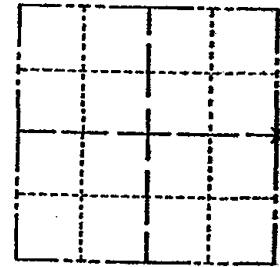
FIELD BOOK: _____ PAGE _____

CORNER NO. LAS 520

SECTION 11

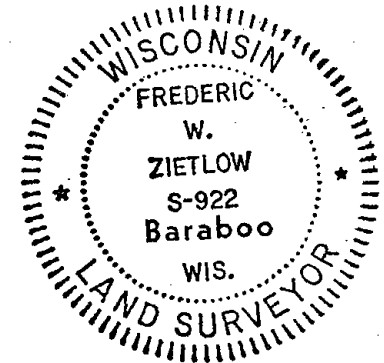
TOWN T.14N.

RANGE R.7E.



LOCATION
(Indicated by 'X')

SEAL:



BASIS FOR MONUMENT LOCATION

(Use reverse side if necessary)

Show info such as: History of corner, with reference to Vol. and pg, dates, surveyor; exact description of monument replaced; if location computed, by taped or EDM traverse; landowner remarks, etc.

Indefinite evidence of good occupation at this corner. Set corner equadistant between northeast corner & southeast corner.

CORNER	O.R.	10-23-76	RN-SS
"	"	3-24-86	GR
"	"	8-27-91	SS-JG
"	"	3-22-02	JG

CORNER OK, ALL TREES HAVE SIGNS, 2-24-06-JG

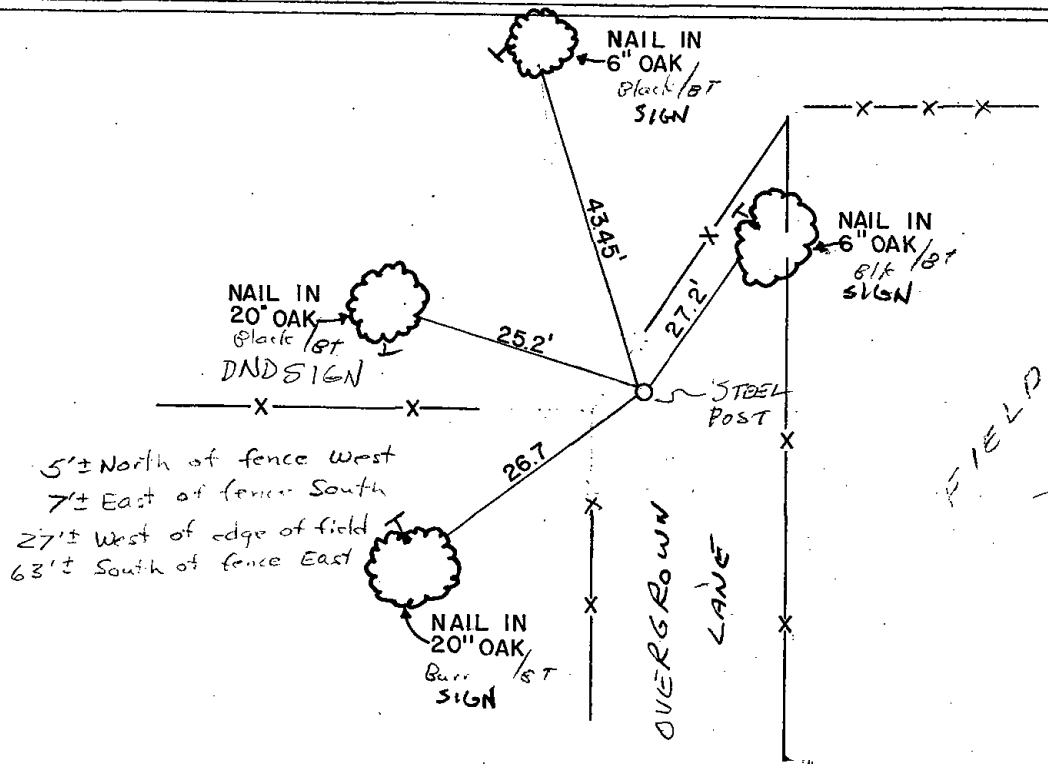
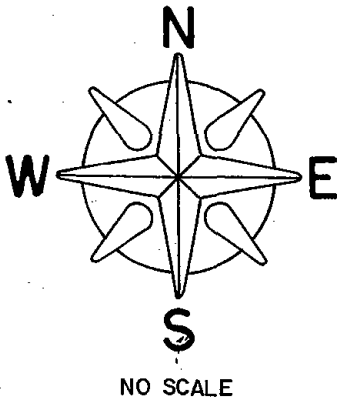
CERTIFIED CORRECT:

Frederic W. Zietlow
Registered Land Surveyor

DATE: NOVEMBER 22, 1974

TIE SKETCH

(Show at least four ties)



MAINTENANCE RECORD

Date	Init.	Remarks
12-9-81	SK-DW	CORNERS O.K
12-3-11	SS	OK -