

07
SECTION

14
TOWN

07
RANGE

ADAMS COUNTY

COUNTY CORNER NO.: 42

ROMPORTOL ID: 41407070020

PUBLIC LAND SURVEY MONUMENT RECORD

TYPE OF MONUMENT: HARRISON (BROKEN-TOP)

ADAMS COUNTY COORDINATES, NAD 83 (2007)

N. 122037.058

E. 559923.667

ELEVATION- DATUM

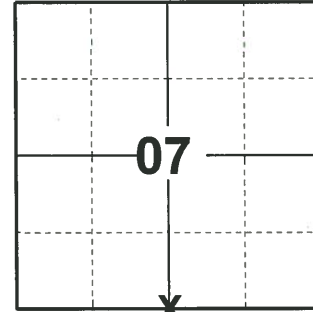
FIELD WORK DATE: 04/13/2020

BASIS FOR MONUMENT LOCATION

1975 - PLS 922 FOUND STONE AT FENCE CORNER, FIT TRANSIT TAPE TRAVERSE OF SECTION GOOD. CHECKED CO. SURVEY RECORDS AND NO RESURVEYS WERE ON FILE.

UNKNOWN - PLS UNKNOWN FOUND HARRISON MONUMENT IN PLACE. REPLACED MISSING TIES.

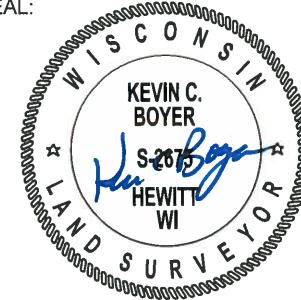
2020 - PLS 2675 FOUND HARRISON (BROKEN-TOP) 20"± BELOW THE FIELD SURFACE AND DID NOT RECOVER ANY TIES OR WITNESSES. CORNER WAS VERIFIED PER NORTH-SOUTH QUARTER LINE DISTANCE PER SECTION SUMMARY PLS 742 12-8-81, AND SOUTH LINE OF THE SE 1/4 AND SW 1/4 FROM A PLAT OF SURVEY DATED 9-12-2009 BY PLS 2415. ACCEPTED HARRISON (BROKEN-TOP) AS BEST EVIDENCE OF THE CORNER LOCATION. SET 2 NEW TIES AND MEASURED TO ADJACENT SECTION CORNERS.



LOCATION

(INDICATE CORNER BY "X")

SEAL:



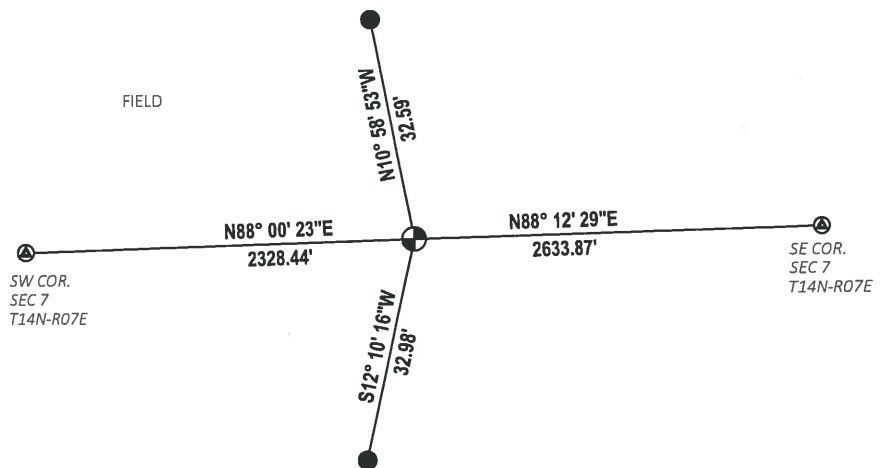
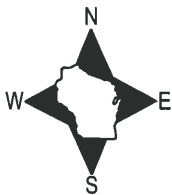
DATA SHOWN HERE ON THIS TIE SHEET IS CORRECT AND COMPLETE TO THE BEST OF MY KNOWLEDGE AND BELIEF.

PROFESSIONAL LAND SURVEYOR

DATE 5/21/2020

- TIE SKETCH

NOTE: TIES SET DOWN 18"±



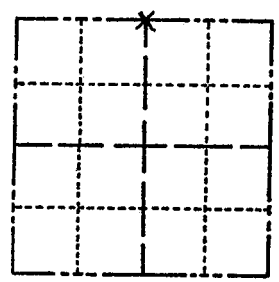
- SET 3/4" x 18" IRON REBAR, 1.50#/FT
- ⊗ FOUND HARRISON MONUMENT
- ⊕ FOUND HARRISON (BROKEN-TOP) MONUMENT

ADAMS COUNTY

Survey Monument Record

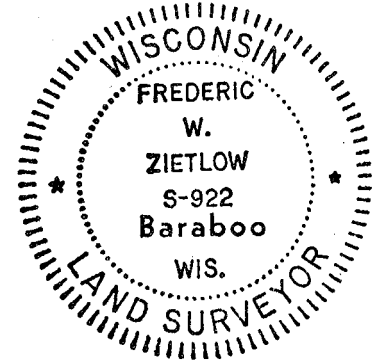
TYPE OF MONUMENT: 30" HARRISON
STATE PLANE COORDINATES: N
E
ELEVATION - M.S.L. DATUM:
THETA ANGLE:
FIELD BOOK: PAGE

CORNER NO. 751 (42)
SECTION 18
TOWN 14-N
RANGE 7-E



LOCATION (Indicated by 'X')

SEAL:



BASIS FOR MONUMENT LOCATION

(Use reverse side if necessary)
Show info such as: History of corner, with reference to Vol. and pg, dates, surveyor; exact description of monument replaced; if location computed, by taped or EDM traverse; landowner remarks, etc.

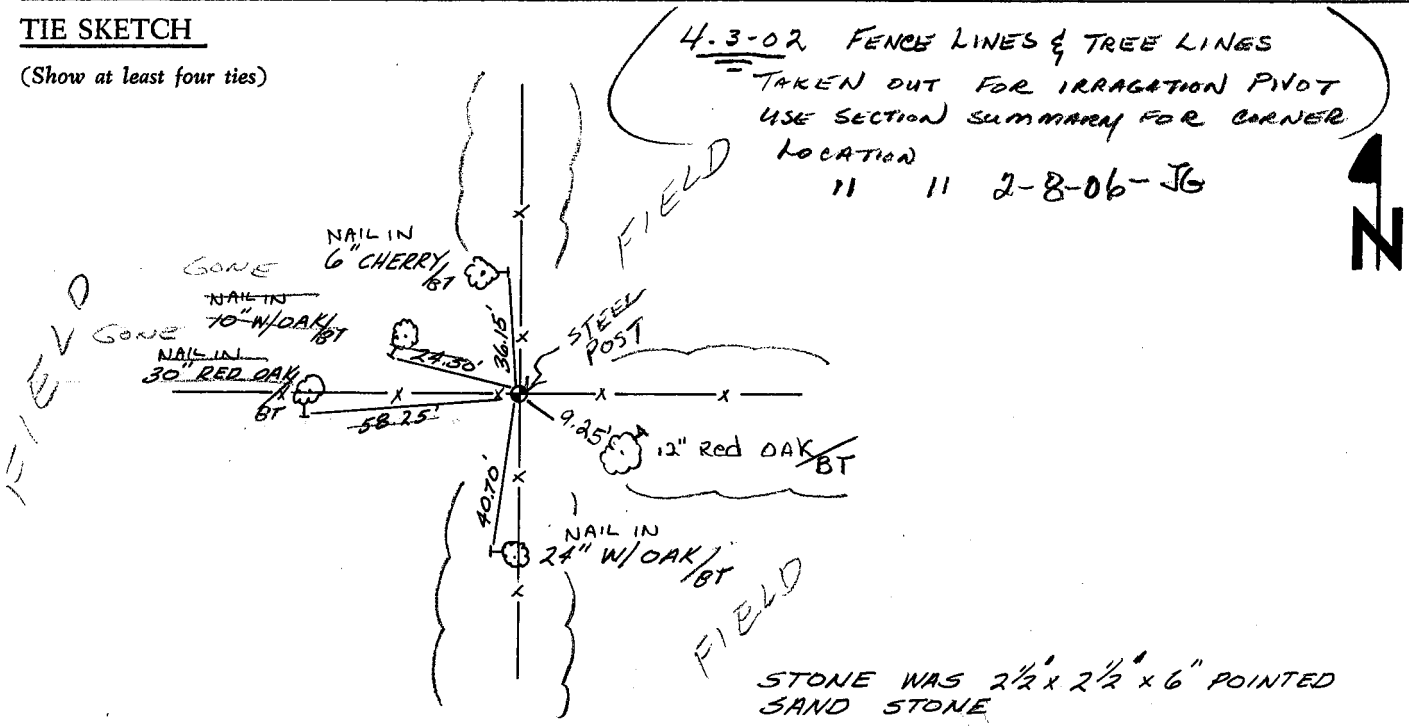
FOUND STONE AT FENCE CORNER. FIT TRANSIT TAPE TRAVERSE OF SECTION GOOD. CHECKED CO. SURVEY RECORDS AND NO RESURVEYS WERE ON FILE.

CORNER O.K. 10-29-76 GR-DCH
2 TIES GONE - 3 REMAIN O.K. 3-6-86 SR-SS
CORNER OK. 8-26-91 SS-JG

CERTIFIED CORRECT:
Frederic W. Zietlow
Registered Land Surveyor
DATE: JULY 31, 1975

TIE SKETCH

(Show at least four ties)



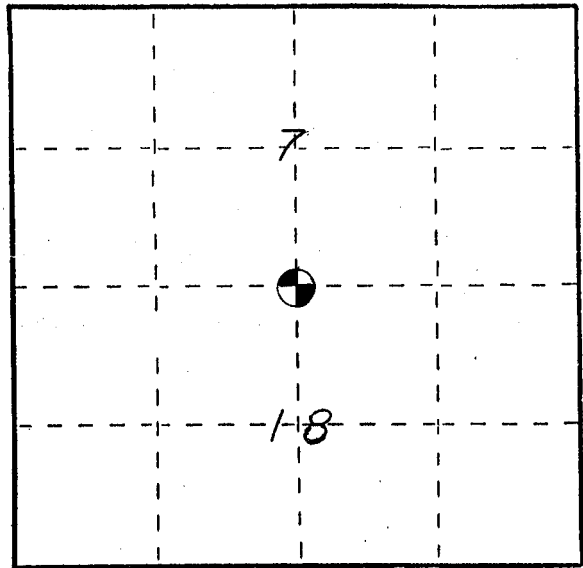
U. S. PUBLIC LAND SURVEY MONUMENT RECORD

ADAMS COUNTY

INSTRUCTIONS: This record shall show the location of the corner and shall include all of the following nine elements (a through i).

- (a) Identify the corner by reference to the U.S. public land survey system.
 O = Corner monument restored.

N¹/₄ CORNER, SECTION 18,
 T14N-R7E, TOWN OF
 DELL PRAIRIE, ADAMS
 COUNTY, WISCONSIN.



- (b) Describe any record evidence, monument evidence, occupational evidence, testimonial evidence or any other material evidence you considered, and whether the monument was found or placed.

FOUND 30" HARRISON MONUMENT IN PLACE
 AS SET BY FREDERIK W. ZIETLOW, JULY
 31, 1975. REPLACED MISSING TIES.

- (c) In the plan view drawing below, provide reference ties to at least 4 witness monuments, or, if the location is within a municipality, to at least 2 witness monuments. (Witness monuments shall be made of concrete, natural stone, iron or other equally durable material.)
 Describe witness monuments.

- (d) Show a plan view drawing depicting the relevant monuments and reference ties which is sufficient in detail to enable accurate relocation of the corner monument if the corner monument is disturbed. Indicate north.

