

07
SECTION

14
TOWN

07
RANGE

ADAMS COUNTY

COUNTY CORNER NO: 43
ROMPORTOL ID: 41407070000

PUBLIC LAND SURVEY MONUMENT RECORD

TYPE OF MONUMENT: HARRISON
ADAMS COUNTY COORDINATES, NAD 83 (2007)

N. 122119.421

E. 562556.250

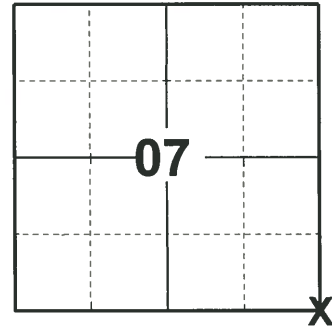
ELEVATION- DATUM

FIELD WORK DATE: 04/09/2020

BASIS FOR MONUMENT LOCATION

1975 - PLS 922 FOUND OLD DETERIORATED CORNER POST. FIT TRANSIT-TAPE TRAVERSE OF SECTION GOOD. CHECKED CO SURVEY RECORDS FOR RESURVEYS AND NON WERE ON FILE.

2020 - PLS 2675 FOUND HARRISON 4"± ABOVE THE GROUND AND 1 WITNESS TREE. THE MONUMENT AGREES WITH THE WITNESS TREE. ACCEPTED THE HARRISON AS THE CORNER LOCATION. SET 4 NEW TIES AND MEASURED TO THE EXISTING WITNESS TREE.



LOCATION
(INDICATE CORNER BY "X")

SEAL:



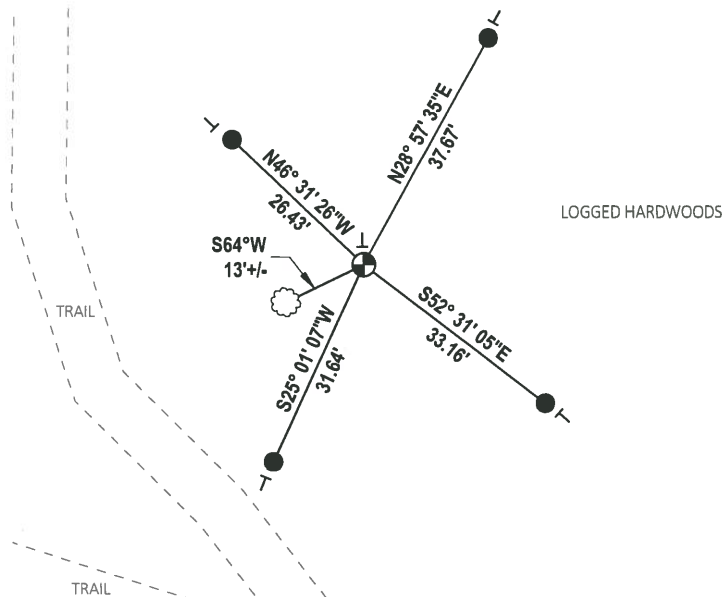
DATA SHOWN HERE ON THIS TIE SHEET IS CORRECT AND COMPLETE TO THE BEST OF MY KNOWLEDGE AND BELIEF.

PROFESSIONAL LAND SURVEYOR

DATE 5/21/2020

- TIE SKETCH

NOTE: THE CORNER LANDS 40'± EAST OF THE TRAIL EDGE.



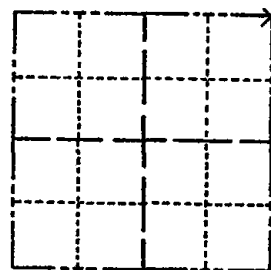
- SET 3/4" x 18" IRON REBAR, 1.50#/FT
- ⊕ FOUND HARRISON MONUMENT
- ⊥ VINYL "T" POST
- ☁ WITNESS TREE

ADAMS COUNTY

Survey Monument Record

TYPE OF MONUMENT: 30" HARRISON
STATE PLANE COORDINATES: N _____
E _____
ELEVATION — M.S.L. DATUM: _____
THETA ANGLE: _____
FIELD BOOK: _____ PAGE _____

CORNER NO. 752
SECTION 18
TOWN 14-N
RANGE 7-E



LOCATION
(Indicated by 'X')

SEAL:

BASIS FOR MONUMENT LOCATION

(Use reverse side if necessary)

Show info such as: History of corner, with reference to Vol. and pg, dates, surveyor; exact description of monument replaced; if location computed, by taped or EDM traverse; landowner remarks, etc.

FOUND OLD DETERIORATED CORNER POST. FIT TRANSIT TAPE TRAVERSE OF SECTION GOOD. CHECKED CO SURVEY RECORDS FOR RESURVEYS AND NONE WERE ON FILE.

CORNER O.K. 10-28-76 GR-DCH
" " 2-12-86 GR-SS

OK 6-2-90 KEN CARLSON
1 NEW TIE 3-14-03 SS
1-NEW TIE, 1-18-06-JG
OK 12-15-11 MS



CERTIFIED CORRECT:

Frederic W. Zietlow

Registered Land Surveyor

DATE: JULY 31, 1975

TIE SKETCH

(Show at least four ties)

