

12  
SECTION

14  
TOWN

07  
RANGE

# ADAMS COUNTY

COUNTY CORNER NO: 52

ROMPORTOL ID: 41407120020

## PUBLIC LAND SURVEY MONUMENT RECORD

TYPE OF MONUMENT: HARRISON  
ADAMS COUNTY COORDINATES, NAD 83 (2007)

N. 122004.195

E. 586245.235

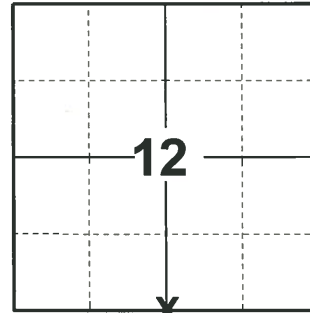
ELEVATION-      DATUM     

FIELD WORK DATE: 04/06/2020

### BASIS FOR MONUMENT LOCATION

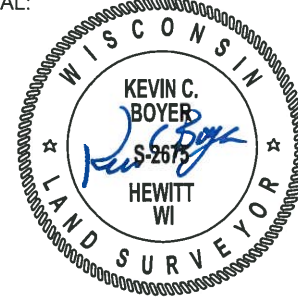
1979 - PLS 1321 RAN EDM/T16 TRAVERSE OF SECTION 12, T14N R7E. HAVING THE SE AND SE CORNER OF SECTION 12 MONUMENTED AND NO EVIDENCE OR RECORDS ON FILE, SET THE S1/4 CORNER USING SINGLE LINE PROPORTION MEASUREMENT. ALSO EXCAVATED IN THIS LOCATION AND WAS UNABLE TO FIND ANY EVIDENCE. SET HARRISON MONUMENT.

2020 - PLS 2675 FOUND HARRISON 6"± ABOVE THE GROUND AND DID NOT RECOVER ANY TIES OR WITNESSES. VERIFIED THE MONUMENT IS ON A NEAR STRAIGHT LINE AND EQUIDISTANT BETWEEN ADJACENT CORNERS. ACCEPTED THE HARRISON AS THE BEST EVIDENCE OF THE CORNER LOCATION AND SET 4 NEW TIES.



**LOCATION**  
(INDICATE CORNER BY "X")

SEAL:



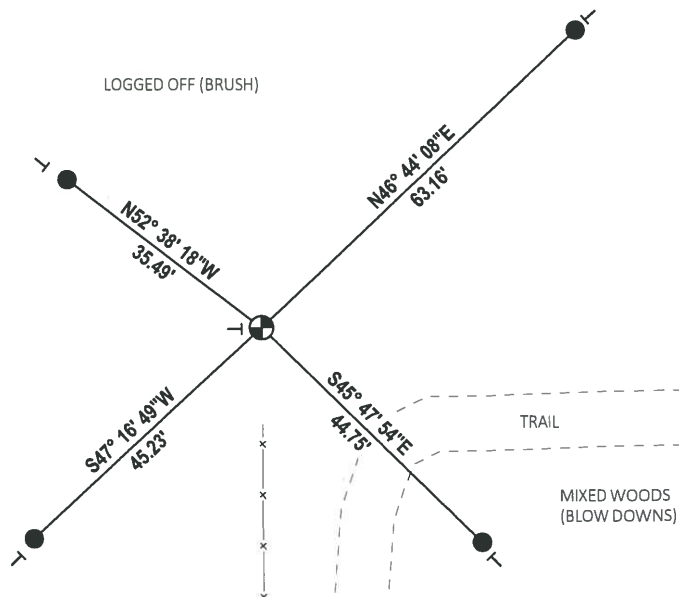
DATA SHOWN HERE ON THIS TIE SHEET IS CORRECT AND COMPLETE TO THE BEST OF MY KNOWLEDGE AND BELIEF.

PROFESSIONAL LAND SURVEYOR

DATE 5/21/2020

### - TIE SKETCH

NOTE: THE CORNER LANDS 21'± NORTH WEST OF THE TRAIL

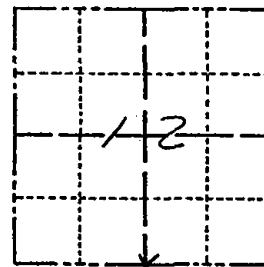


- SET 3/4" x 18" IRON REBAR, 1.50#/FT
- ⊕ FOUND HARRISON MONUMENT
- VINYL "T" POST

# Government Land Corner Certificate

ADAMS County  
 TYPE OF MONUMENT: 30" HARRISON  
 STATE PLANE COORDINATES: N \_\_\_\_\_  
 E \_\_\_\_\_  
 ELEVATION — M.S.L. DATUM: \_\_\_\_\_  
 THETA ANGLE: \_\_\_\_\_  
 FIELD BOOK: \_\_\_\_\_ PAGE \_\_\_\_\_  
 DRAWN BY: \_\_\_\_\_

CORNER NO. 52  
 SECTION 12  
 TOWN 14  
 RANGE 7



LOCATION  
 (Indicated by 'X')

## BASIS FOR MONUMENT LOCATION

Show info such as: History of corner, with reference to Vol. and pg., dates, surveyor; exact description of monument replaced; if location computed, by taped or EDM traverse; landowner remarks, etc. (Use reverse side if necessary)

RAN EDM/TIG TRAVERSE OF SECTION 12, T14N, R7E.

HAVING THE SW AND SE CORNERS OF SECTION 12 MONUMENTED AND NO EVIDENCE OR RECORDS ON FILE, I SET THE SW CORNER USING SINGLE LINE PROPORTION MEASUREMENT.

I ALSO EXCAVATED IN THIS LOCATION (4'x4'x2.5' HOLE) AND WAS UNABLE TO FIND ANY EVIDENCE.  
 SET HARRISON AUG. 4, 1979

SEAL:



DATA SHOWN HERE ON CERTIFIED CORRECT:

James R. Grothman  
 Registered Land Surveyor

DATE: AUG 22, 1979

## TIE SKETCH

Show at least four ties, also fence lines, roads, topo, size and type of witness trees' and if off road - best way to arrive at corner.

