

18
SECTION

14
TOWN

07
RANGE

ADAMS COUNTY

COUNTY CORNER NO: 55

ROMPORTOL ID: 41407182000

PUBLIC LAND SURVEY MONUMENT RECORD

TYPE OF MONUMENT: HARRISON (BROKEN-TOP)

ADAMS COUNTY COORDINATES, NAD 83 (2007)

N. 119489.575

E. 562562.248

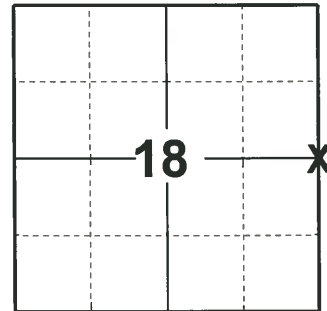
ELEVATION- - - DATUM - -

FIELD WORK DATE: 04/20/2020

BASIS FOR MONUMENT LOCATION

1975 - PLS 922 COULD FIND NO EVIDENCE OF CORNER. SET EQUIDISTANT AND ONLINE BETWEEN NE CORNER AND SE CORNER. CHECKED COUNTY SURVEY RECORDS AND NO RESURVEY WERE ON FILE. SET HARRISON.

2020 - PLS 2675 FOUND HARRISON (BROKEN-TOP) 18"± BELOW THE GROUND AND 2 WITNESSES. THE MONUMENT AGREES WITH BOTH WITNESSES. ACCEPTED THE HARRISON (BROKEN-TOP) AS THE CORNER LOCATION. SET 4 NEW TIES AND MEASURED TO THE EXISTING WITNESSES.



LOCATION
(INDICATE CORNER BY "X")

SEAL:



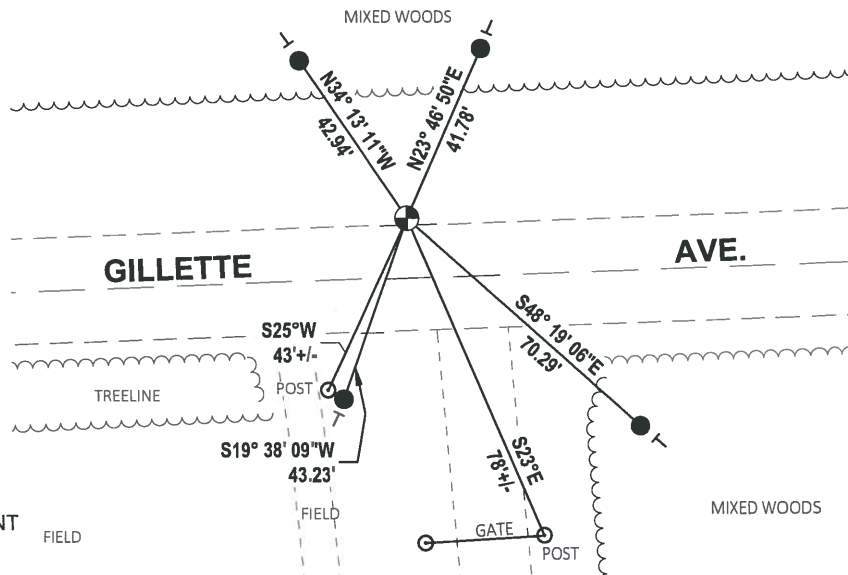
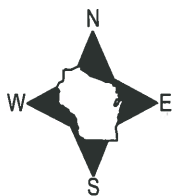
DATA SHOWN HERE ON THIS TIE SHEET IS CORRECT AND COMPLETE TO THE BEST OF MY KNOWLEDGE AND BELIEF.

PROFESSIONAL LAND SURVEYOR

DATE 5/28/2020

- TIE SKETCH

NOTE: THE CORNER LANDS 13'± NORTH OF GILLETTE AVE. CENTERLINE.



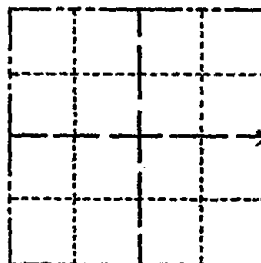
- SET 3/4" x 18" IRON REBAR, 1.50#/FT
- ⊕ FOUND HARRISON (BROKEN-TOP) MONUMENT
- VINYL "T" POST

ADAMS COUNTY

Survey Monument Record

TYPE OF MONUMENT: 30" HARRISON
STATE PLANE COORDINATES: N _____
E _____
ELEVATION — M.S.L. DATUM: _____
THETA ANGLE: _____
FIELD BOOK: _____ PAGE _____

CORNER NO. 753
SECTION 18
TOWN 14N
RANGE 7E



LOCATION
(Indicated by 'X')

SEAL:

BASIS FOR MONUMENT LOCATION

(Use reverse side if necessary)

Show info such as: History of corner, with reference to Vol. and pg, dates, surveyor; exact description of monument replaced; if location computed, by taped or EDM traverse; landowner remarks, etc.

COULD FIND NO EVIDENCE OF CORNER.
SET EQUADISTANT ON LINE BETWEEN
NE COR. AND SE COR. CHECKED CO. SURVEY-
RECORDS AND NO RESURVEYS WERE ON FILE

CORNER O.K. 10-28-76 GR-DCH
" " 11-5-90 JG-SS
" " 6-11-01 JG

1-GONE, 1-NEW, TOP (BROKEN) OFF MON. 1-18-06-JG
OK 2-16-11 SS



CERTIFIED CORRECT:

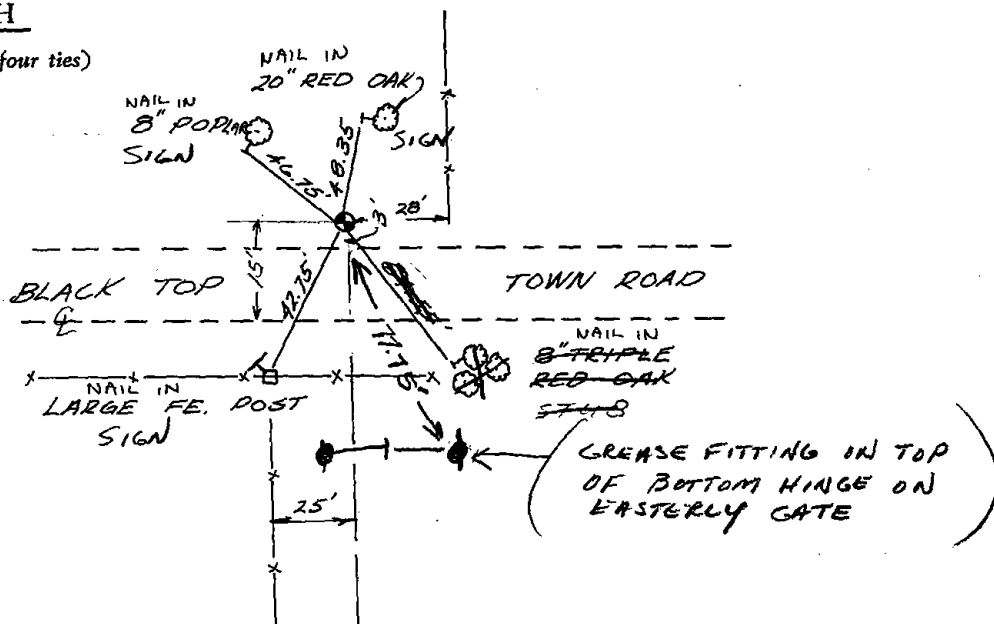
Frederic W. Zietlow

Registered Land Surveyor

DATE: July 31, 1975

TIE SKETCH

(Show at least four ties)

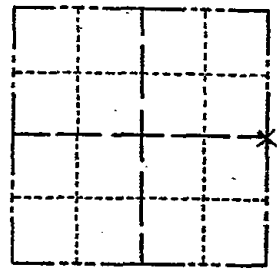


ADAMS COUNTY

Survey Monument Record

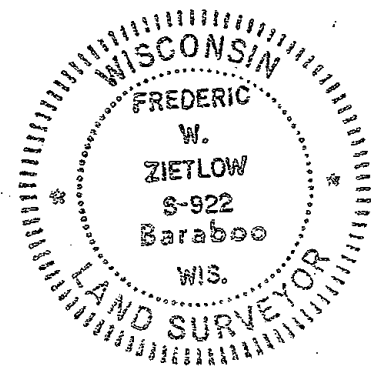
CORNER NO. 753
 SECTION 18
 TOWN 14 N
 RANGE 7 E

TYPE OF MONUMENT: 30" HARRISON
 STATE PLANE COORDINATES: N _____
 E _____
 ELEVATION — M.S.L. DATUM: _____
 THETA ANGLE: _____
 FIELD BOOK: _____ PAGE _____



LOCATION
(Indicated by 'X')

SEAL:



BASIS FOR MONUMENT LOCATION

(Use reverse side if necessary)

Show info such as: History of corner, with reference to Vol. and pg, dates, surveyor; exact description of monument replaced; if location computed, by taped or EDM traverse; landowner remarks, etc.

COULD FIND NO EVIDENCE OF CORNER.
 SET EQUADISTANT ON LINE BETWEEN
 NE COR. AND SE COR. CHECKED CO. SURVEY-
 RECORDS AND NO RESURVEYS WERE ON FILE

CORNER O.K. 10-28-76 BR-OCH
 " " 11-5-90 JG-SS
 " " 10-11-91 JG
 1-GONE, 1-NEW, TOP BROKEN OFF MAN. 1-18-06-JG
 corner OK 3-21-08 MCC

CERTIFIED CORRECT:

Frederic W. Zietlow

Registered Land Surveyor

DATE: JULY 31, 1975

TIE SKETCH

(Show at least four ties)

