

14
SECTION

14
TOWN

07
RANGE

ADAMS COUNTY

COUNTY CORNER NO: 59

ROMPORTOL ID: 414007142000

PUBLIC LAND SURVEY MONUMENT RECORD

TYPE OF MONUMENT: HARRISON
ADAMS COUNTY COORDINATES, NAD 83 (2007)

N. 119309.055

E. 583562.900

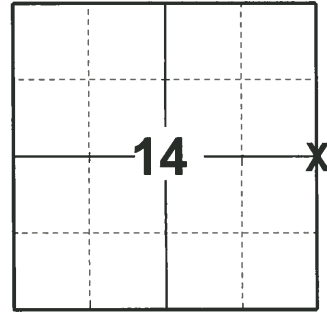
ELEVATION- DATUM

FIELD WORK DATE: 03/19/2020

BASIS FOR MONUMENT LOCATION

1981 - PLS 742 COULD FIND NO RECORD BEYOND ORIGINAL SURVEY. FOUND HARRISON'S AT NW & SW CORNERS- SPLIT THE DIFFERENCE ON A STRAIGHT LINE. THIS LANDED VERY CLOSE, 1-1/2' E AND 1-1/2' S, OF FENCE LINE & CHANGE IN WIRE. ALSO FIT FENCE TO WEST GOOD. EDM TRAVERSE.

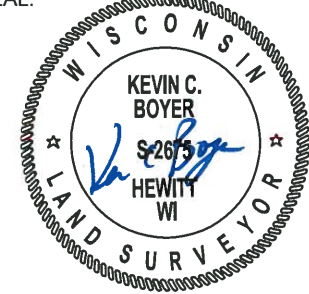
2020 - PLS 2675 FOUND HARRISON 3"± BELOW THE WEST EDGE OF ROCK PILE AND DID NOT RECOVER ANY TIES OR WITNESSES. VERIFIED MONUMENT TO BE ON A NEAR STRAIGHT LINE AND EQUIDISTANT BETWEEN ADJACENT SECTION CORNERS. ACCEPTED THE HARRISON AS THE BEST EVIDENCE OF THE CORNER LOCATION AND SET 4 NEW TIES.



LOCATION

(INDICATE CORNER BY "X")

SEAL:



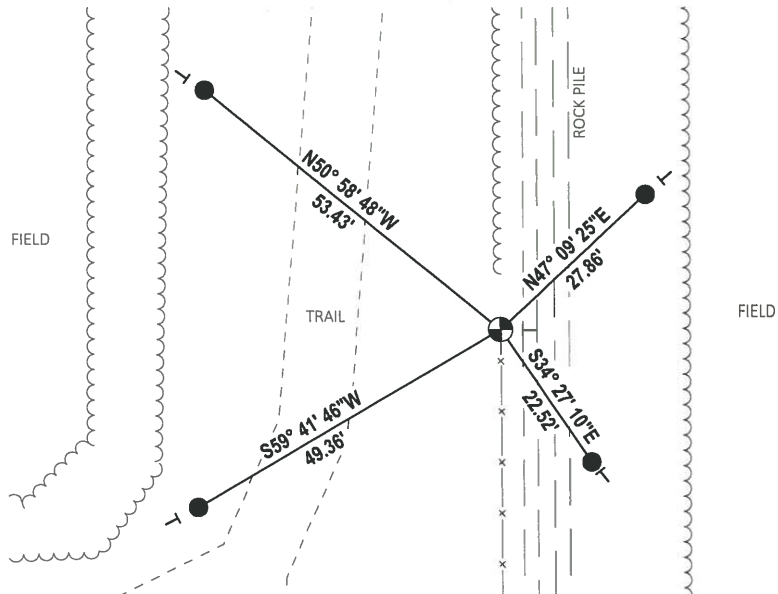
DATA SHOWN HERE ON THIS TIE SHEET IS CORRECT AND COMPLETE TO THE BEST OF MY KNOWLEDGE AND BELIEF.

PROFESSIONAL LAND SURVEYOR

DATE 5/28/2020

TIE SKETCH

NOTE: THE CORNER LANDS 20'± EAST OF THE TRAIL



- SET 3/4" x 18" IRON REBAR, 1.50#/FT
- ⊕ FOUND HARRISON MONUMENT
- VINYL "T" POST

ADAMS COUNTY

Survey Monument Record

TYPE OF MONUMENT: Harrison

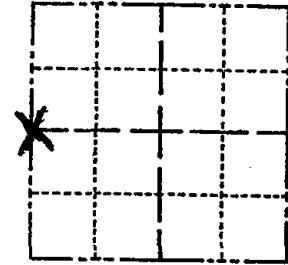
STATE PLANE COORDINATES: N _____
E _____

ELEVATION — M.S.L. DATUM: _____

THETA ANGLE: _____

FIELD BOOK: _____ PAGE _____

CORNER NO. 19
SECTION 13
TOWN 14
RANGE 7



LOCATION
(Indicated by 'X')

SEAL:



BASIS FOR MONUMENT LOCATION

(Use reverse side if necessary)

Show info such as: History of corner, with reference to Vol. and pg, dates, surveyor; exact description of monument replaced; if location computed, by taped or EDM traverse; landowner remarks, etc.

Could find no record beyond original survey. Found Harrison's at NW $\frac{1}{4}$ SW corners - split diff on straight line. This landed very close, $1\frac{1}{2}$ ' E and $1\frac{1}{2}$ ' S, of fence line, change in wire. Also fit fence to West good. EDM traverse.

CERTIFIED CORRECT:

Kenneth G. Carlson
Registered Land Surveyor

DATE: July 20, 1981

TIE SKETCH

(Show at least four ties)

LANE EAST OF HOUSE NO. 201

