

13
SECTION

14
TOWN

06
RANGE

ADAMS COUNTY

COUNTY CORNER NO: 73

ROMPORTOL ID: 41406130000

PUBLIC LAND SURVEY MONUMENT RECORD

TYPE OF MONUMENT: HARRISON
ADAMS COUNTY COORDINATES, NAD 83 (2007)

N. 116711.519

E. 557555.590

ELEVATION- DATUM

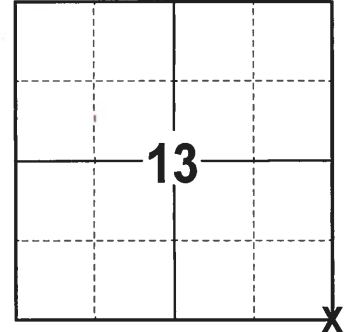
FIELD WORK DATE: 09/14/2017

BASIS FOR MONUMENT LOCATION

1975 - PLS 922 FOUND A P.K. NAIL IN THE CENTERLINE OF THE ROAD IN LINE WITH A FENCE TO THE EAST. IT WAS USED BY DEAN JESSE AS THE SECTION CORNER AND IT FIT THE TRANSIT-TAPE TRAVERSE OF THE SECTION GOOD. SET A 30" HARRISON AT THE CORNER LOCATION AND TIED OUT.

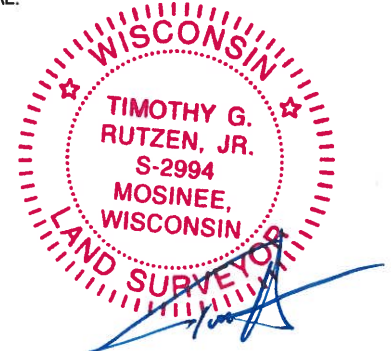
1999 - PLS 1397 EXISTING MONUMENT WAS FOUND AT THE CORNER LOCATION. MONUMENT WAS REMOVED AND RAISED DUE TO RECONSTRUCTION OF C.T.H. B. CORNER WAS RE-TIED.

2017 - PLS 2994 FOUND A HARRISON MONUMENT 4" BELOW THE ROAD SURFACE AND 2 TIES. THE MONUMENT AGREES WITH THE EXISTING TIES. ACCEPTED THE HARRISON MONUMENT AS THE CORNER LOCATION. SET 2 NEW TIES AND RE-MEASURED ALL TIES.



LOCATION
(INDICATE CORNER BY "X")

SEAL:



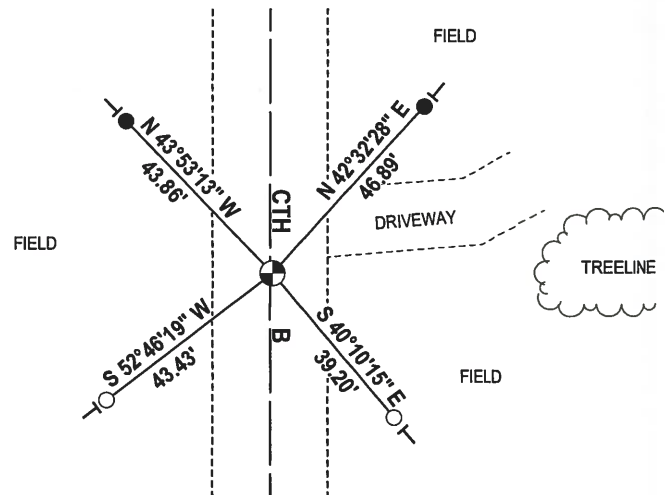
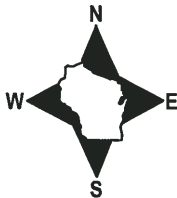
DATA SHOWN HERE ON THIS TIE SHEET IS CORRECT AND COMPLETE TO THE BEST OF MY KNOWLEDGE AND BELIEF.

PROFESSIONAL LAND SURVEYOR

DATE 11-15-17

- TIE SKETCH -

NOTE: THE CORNER FALLS 0.5'± EAST OF THE CENTERLINE OF CTH B.



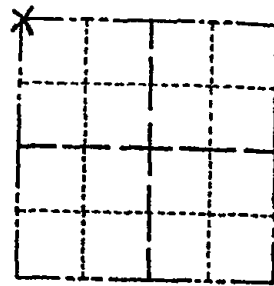
- 3/4" x 18" IRON REBAR SET, 1.50#/FT
- 1-1/4" O.D. IROD PIPE FOUND
- ⊙ HARRISON FOUND
- VINYL "T" POST

ADAMS COUNTY

Survey Monument Record

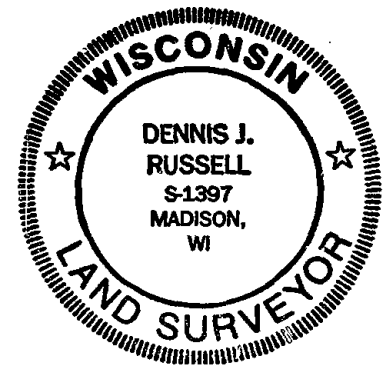
TYPE OF MONUMENT: 30" HARRISON MARKER
 STATE PLANE COORDINATES: N _____
 E _____
 ELEVATION — M.S.L. DATUM: _____
 THETA ANGLE: _____
 FIELD BOOK: _____ PAGE _____

CORNER NO. 755
 SECTION 19
 TOWN 14N
 RANGE 7E



LOCATION
(Indicated by 'X')

SEAL:



BASIS FOR MONUMENT LOCATION

(Use reverse side if necessary)

Show info such as: History of corner, with reference to Vol. and pg. dates, surveyor; exact description of monument replaced; if location computed, by taped or EDM traverse; landowner remarks, etc.

Existing Monument was found in place. Monument was removed and raised due to reconstruction of C.T.H. "B". All tie measurements are horizontal measurements unless noted otherwise.

ALL OK 1-19-06
 OK 2-25-11 SS

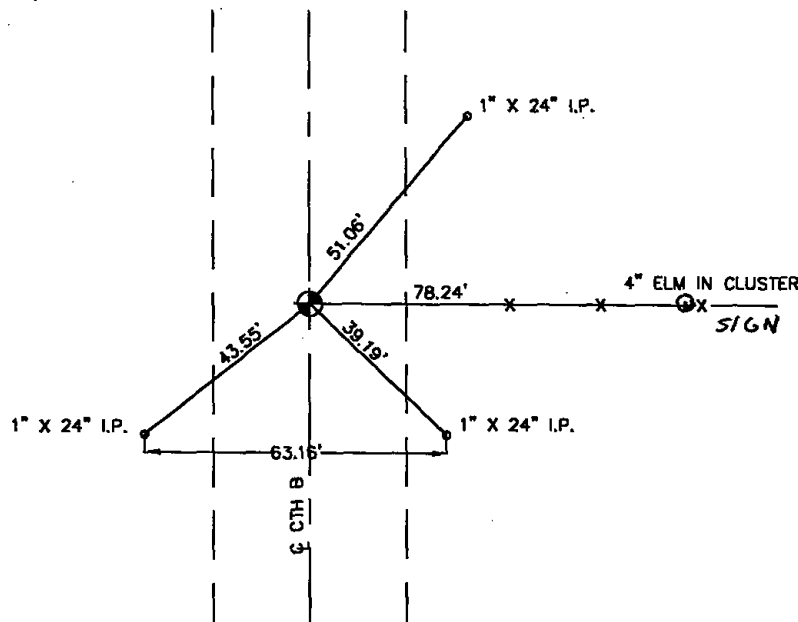
CERTIFIED CORRECT

Dennis J. Russell
 Registered Land Surveyor
 DATE: July 26, 1999

TIE SKETCH

(Show at least four ties)

ALL MEASUREMENTS ARE HORIZONTAL.

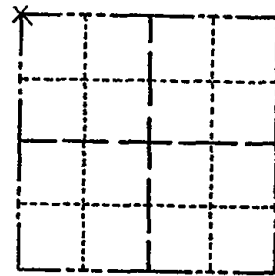


ADAMS COUNTY

Survey Monument Record

TYPE OF MONUMENT: 30" HARRISON
 STATE PLANE COORDINATES: N _____
 E _____
 ELEVATION — M.S.L. DATUM: _____
 THETA ANGLE: _____
 FIELD BOOK: _____ PAGE _____

CORNER NO. 755⁶¹
 SECTION 19
 TOWN 14 N
 RANGE 7 E



LOCATION
(Indicated by 'X')

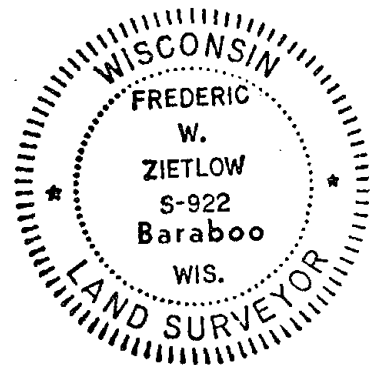
SEAL:

BASIS FOR MONUMENT LOCATION

(Use reverse side if necessary)

Show info such as: History of corner, with reference to Vol. and pg, dates, surveyor; exact description of monument replaced; if location computed, by taped or EDM traverse; landowner remarks, etc.

FOUND P.K. NAIL IN $\frac{1}{2}$ OF ROAD OFF FENCE TO EAST USED BY DEAN JESSE AS SECTION CORNER FIT TRANSIT-TAPE TRAVERSE OF SECTION GOOD.
 CORNER O.K. 10-29-76 GR-SS
 ALL OK 12-19-90 KZ JG
 1-NEW, 1-GONE 4-25-96 JG-SS



CERTIFIED CORRECT:

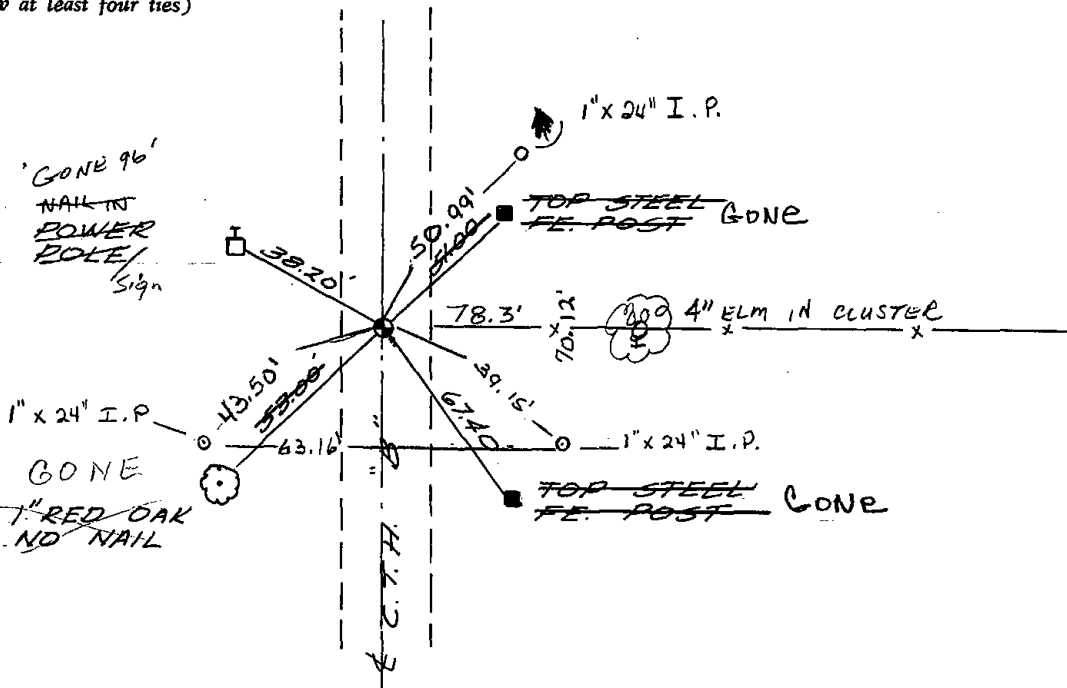
Frederic W. Zietlow

Registered Land Surveyor

DATE: JULY 31, 1975

TIE SKETCH

(Show at least four ties)



MAINTENANCE RECORD

Date	Init.	Remarks
10-11-81	SK-DN	CORNER O.K.
3-17-86	GR-SS	" "
12-18-01	JG	TIE OK, BOTH SHEETS