

18
SECTION

14
TOWN

07
RANGE

ADAMS COUNTY

COUNTY CORNER NO: 63

ROMPORTOL ID: 41407180000

PUBLIC LAND SURVEY MONUMENT RECORD

TYPE OF MONUMENT: HARRISON
ADAMS COUNTY COORDINATES, NAD 83 (2007)

N. 116824.501

E. 562539.305

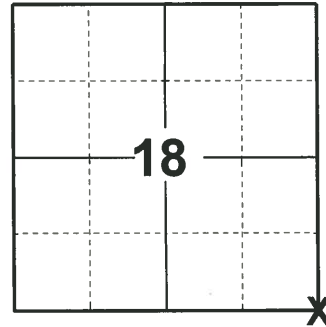
ELEVATION- DATUM

FIELD WORK DATE: 04/20/2020

BASIS FOR MONUMENT LOCATION

1975 - PLS 922 USED 4-WAY FENCE CORNER AS IT FIT TRANSIT-TAPE TRAVERSE OF SECTION GOOD CHECKED COUNTY SURVEY RECORDS AND NO RESURVEYS WERE ON FILE. SET HARRISON.

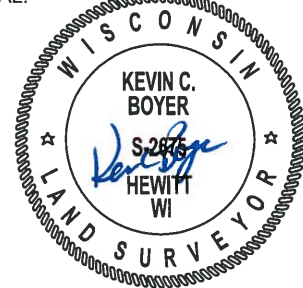
2020 - PLS 2675 FOUND HARRISON FLUSH WITH THE GROUND AT A 3-WAY FENCE CORNER AND 1 WITNESS. THE MONUMENT AGREES WITH THE WITNESS. ACCEPTED THE HARRISON AS THE CORNER LOCATION. SET 4 NEW TIES AND MEASURED TO THE EXISTING WITNESS.



LOCATION

(INDICATE CORNER BY "X")

SEAL:

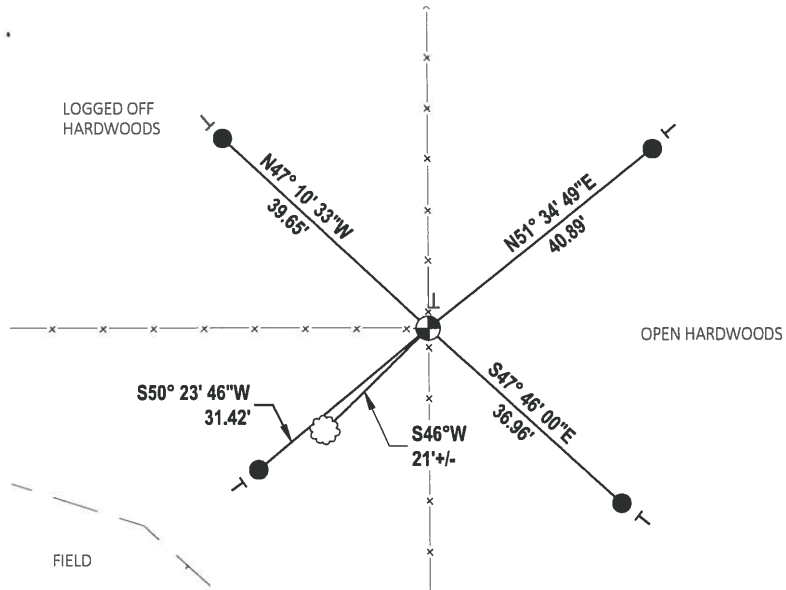
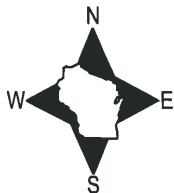


DATA SHOWN HERE ON THIS TIE SHEET IS CORRECT AND COMPLETE TO THE BEST OF MY KNOWLEDGE AND BELIEF.

PROFESSIONAL LAND SURVEYOR

DATE 5/29/2020

- TIE SKETCH



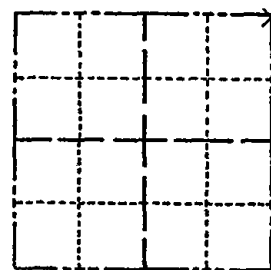
- SET 3/4" x 18" IRON REBAR, 1.50#/FT
- ⊕ FOUND HARRISON MONUMENT
- VINYL "T" POST
- ⊗ WITNESS TREE

ADAMS COUNTY

Survey Monument Record

TYPE OF MONUMENT: 30" HARRISON
 STATE PLANE COORDINATES: N _____
 E _____
 ELEVATION — M.S.L. DATUM: _____
 THETA ANGLE: _____
 FIELD BOOK: _____ PAGE _____

CORNER NO. 757⁽⁶³⁾
 SECTION 19
 TOWN 14 N
 RANGE 7 E



LOCATION
(Indicated by 'X')

SEAL:

BASIS FOR MONUMENT LOCATION

(Use reverse side if necessary)

Show info such as: History of corner, with reference to Vol. and pg, dates, surveyor; exact description of monument replaced; if location computed, by taped or EDM traverse; landowner remarks, etc.

USED 4-WAY FENCE CORNER AS IT FIT
 TRANSIT-TAPE TRAVERSE OF SECTION
 GOOD CHECKED CO. SURVEY RECORDS
 AND NO RESURVEYS WERE ON FILE

CORNER O.K. 10-28-76 GR-DCH



CERTIFIED CORRECT:

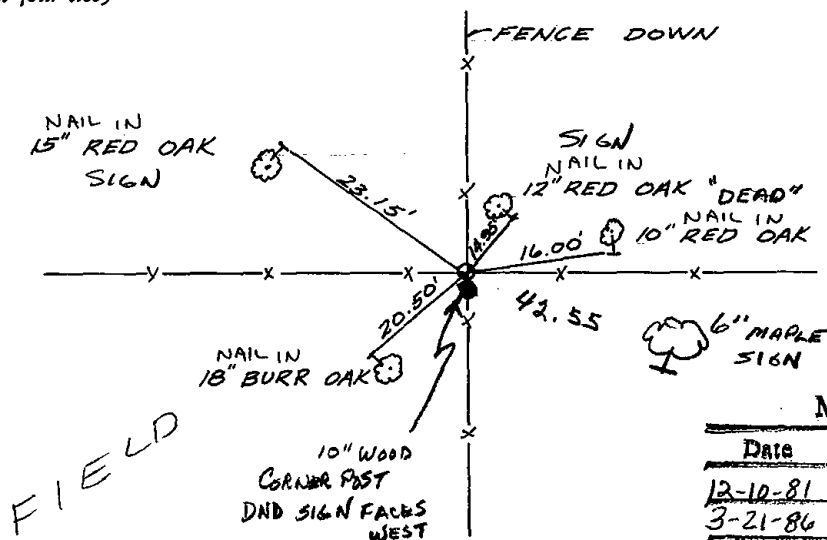
Frederick W. Zietlow

Registered Land Surveyor

DATE: July 31, 1975

TIE SKETCH

(Show at least four ties)



MAINTENANCE RECORD

Date	Init.	Remarks
12-10-81	SK-DW	CORNER O.K.
3-21-86	DYH	CORNER O.K.
11-5-90	JG-SS	OK
4-25-96	JG-SS	OK
4-3-02	JG	1-NEW TIE, COR OK
1-18-06	JG	OK

ADAMS COUNTY

Survey Monument Record

TYPE OF MONUMENT: 30" HARRISON

STATE PLANE COORDINATES: N _____
E _____

ELEVATION — M.S.L. DATUM: _____

THETA ANGLE: _____

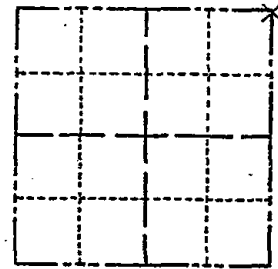
FIELD BOOK: _____ PAGE _____

CORNER NO. 757

SECTION 19

TOWN 14 N

RANGE 7 E



LOCATION
(Indicated by 'X')

SEAL:



BASIS FOR MONUMENT LOCATION

(Use reverse side if necessary)

Show info such as: History of corner, with reference to Vol. and pg, dates, surveyor; exact description of monument replaced; if location computed, by taped or EDM traverse; landowner remarks, etc.

USED 4-WAY FENCE CORNER AS IT FIT
TRANSIT-TAPE TRAVERSE OF SECTION
GOOD CHECKED CO. SURVEY RECORDS
AND NO RESURVEYS WERE ON FILE

CORNER SET 10-28-74 G.F. ZIELOW
CORNER OK 4 Ties 3-21-80 JMC

CERTIFIED CORRECT:

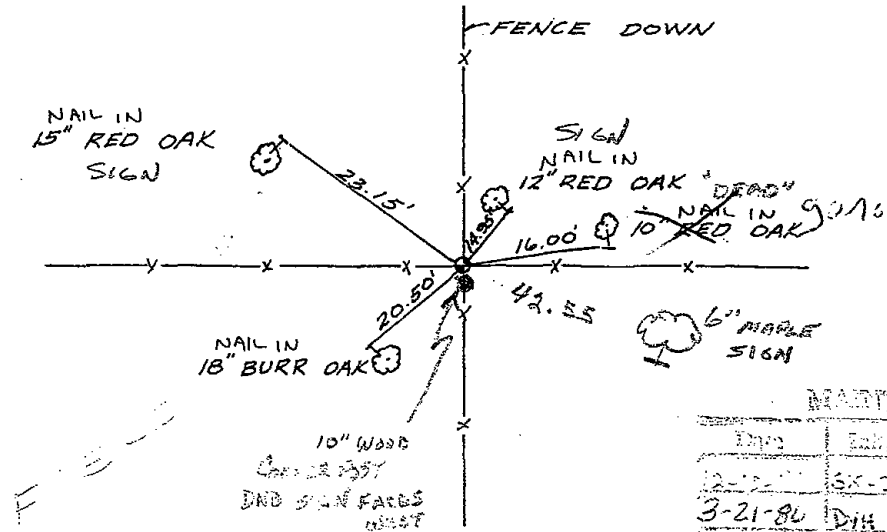
Frederic W. Zietlow

Registered Land Surveyor

DATE: July 31, 1975

TIE SKETCH

(Show at least four ties)



MAINTENANCE RECORD

Date	Exam	Remarks
12-15-77	GK-DW	CORNER OK
3-21-80	DH	CORNER OK
1-15-82	JG-SS	OK
4-25-81	JG-SS	OK
4-30-82	JG	1-NEW TIE 20\"/>