

## PUBLIC LAND SURVEY MONUMENT RECORD

TYPE OF MONUMENT: HARRISON (BROKEN-TOP)  
 ADAMS COUNTY COORDINATES, NAD 83 (2007)

N. 116808.065

E. 565170.388

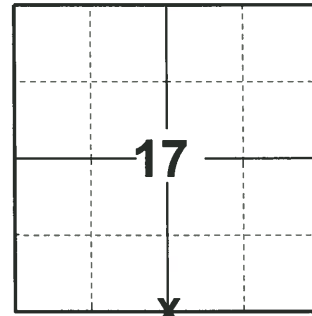
ELEVATION- - - - DATUM - - - -

FIELD WORK DATE: 04/20/2020

### BASIS FOR MONUMENT LOCATION

1974 - PLS 776 AREA MACHINE EXCAVATED- NOTHING FOUND. DISTANCES CHECKED BY EDM. HARRISON SET.

2020 - PLS 2675 FOUND SURVEY NAIL IN THE ROAD SURFACE, REMOVED AND FOUND HARRISON (BROKEN-TOP) 24"± BELOW THE ROAD SURFACE, DID NOT RECOVER ANY TIES OR WITNESSES. VERIFIED THE MONUMENT IS NEAR ON LINE AND EQUIDISTANT BETWEEN ADJACENT SECTION CORNERS. ACCEPTED THE HARRISON (BROKEN-TOP) AS THE BEST EVIDENCE OF THE CORNER LOCATION. MEASURED TO 4 FOUND WISDOT ALUMINUM CAP MONUMENTS.



**LOCATION**  
 (INDICATE CORNER BY "X")

SEAL:



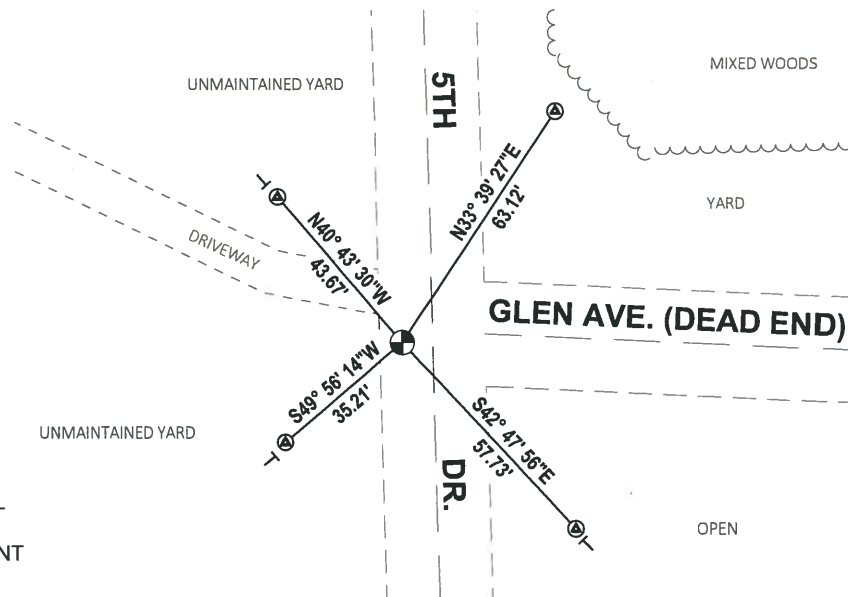
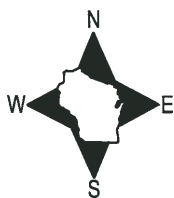
DATA SHOWN HERE ON THIS TIE SHEET IS CORRECT AND COMPLETE TO THE BEST OF MY KNOWLEDGE AND BELIEF.

PROFESSIONAL LAND SURVEYOR

DATE 5/28/2020

### - TIE SKETCH

NOTE: THE CORNER LANDS 6.7'± WEST OF 5TH DR. CENTERLINE.



- ⊙ FOUND WISDOT ALUMINUM CAP MONUMENT
- ⊙ FOUND HARRISON (BROKEN-TOP) MONUMENT
- VINYL "T" POST

ADAMS COUNTY

Survey Monument Record

TYPE OF MONUMENT: HARRISON

STATE PLANE COORDINATES: N \_\_\_\_\_

E \_\_\_\_\_

ELEVATION — M.S.L. DATUM: \_\_\_\_\_

THETA ANGLE: \_\_\_\_\_

FIELD BOOK: \_\_\_\_\_ PAGE \_\_\_\_\_

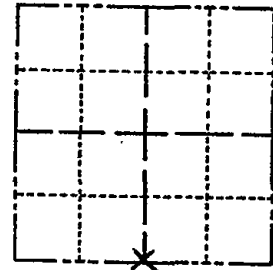
CORNER NO. 535

SECTION 17

TOWN 14

RANGE 7

64



LOCATION (Indicated by 'X')

SEAL:

BASIS FOR MONUMENT LOCATION

(Use reverse side if necessary)

Show info such as: History of corner, with reference to Vol. and pg, dates, surveyor; exact description of monument replaced; if location computed, by taped or EDM traverse; landowner remarks, etc.

TIES ARE TO 20<sup>th</sup> SPIKE.  
AREA MACHINE EXCAVATED - NOTHING FOUND.  
DISTANCES CHECKED BY E.D.M.  
MEASUREMENTS ARE HORIZONTAL

CORNER	O.K.	10-22-76	RN-SS
"	"	2-12-86	GR-SS
"	"	11-5-90	JG-SS
"	"	11/28/95	JG-SS

1-NEW COR OK 6/11/01 - JG  
ALL OK, 1-18-06 - JG  
2-16-11 OK SS



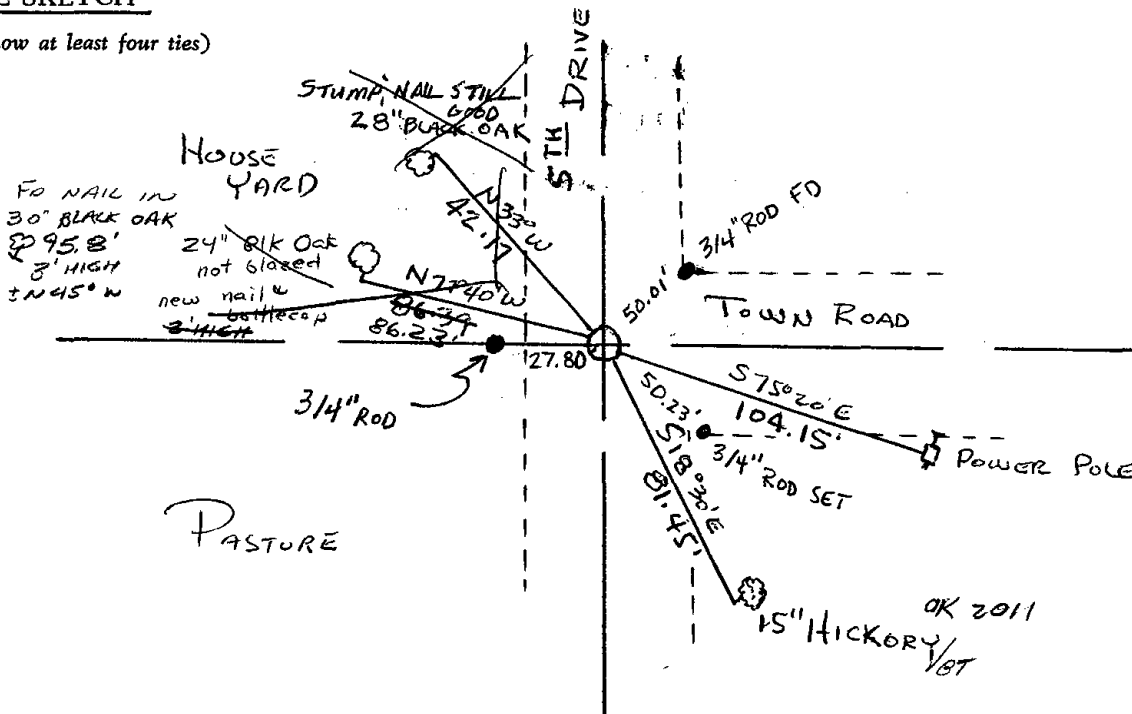
CERTIFIED CORRECT:

*Herman S. Holzmiller*  
Registered Land Surveyor 5-776

DATE: 12-16-74

TIE SKETCH

(Show at least four ties)

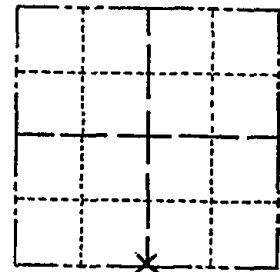


MS COUNTY

urvey Monument Record

TYPE OF MONUMENT: HARRISON  
 STATE PLANE COORDINATES: N \_\_\_\_\_  
 E \_\_\_\_\_  
 ELEVATION — M.S.L. DATUM: \_\_\_\_\_  
 THETA ANGLE: \_\_\_\_\_  
 FIELD BOOK: \_\_\_\_\_ PAGE \_\_\_\_\_

CORNER NO. 535  
 SECTION 17  
 TOWN 14  
 RANGE 7



LOCATION  
(Indicated by 'X')

SEAL:

BASIS FOR MONUMENT LOCATION

(Use reverse side if necessary)

Show info such as: History of corner, with reference to Vol. and pg, dates, surveyor; exact description of monument replaced; if location computed, by taped or EDM traverse; landowner remarks, etc.



TIES ARE TO 20<sup>th</sup> SPIKE.  
 AREA MACHINE EXCAVATED - NOTHING FOUND.  
 DISTANCES CHECKED BY E.D.M.  
 MEASUREMENTS ARE HORIZONTAL

CORNER	O.F.	10-22-76	RN-SS
"	"	2-12-86	GR-SS
"	"	11-5-90	JG-SS
"	"	11/28/95	JG-SS
NEW TIES		12/14/00	SH-MC

CERTIFIED CORRECT:

*Herman Holzmilller*  
 Registered Land Surveyor 5-776  
 DATE: 12-16-74

TIE SKETCH

(Show at least four ties)

