

17
SECTION

14
TOWN

07
RANGE

ADAMS COUNTY

COUNTY CORNER NO: 65
ROMPORTOL ID: 41407170000

PUBLIC LAND SURVEY MONUMENT RECORD

TYPE OF MONUMENT: SURVEY NAIL
ADAMS COUNTY COORDINATES, NAD 83 (2007)

N. 116787.683

E. 567804.779

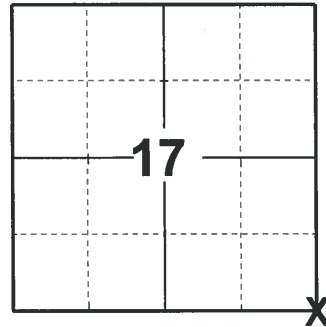
ELEVATION- DATUM

FIELD WORK DATE: 04/15/2020

BASIS FOR MONUMENT LOCATION

1974 - PLS 776 AREA MACHINE EXCAVATED. DISTANCES CHECKED BY EDM. SET HARRISON.

2020 - PLS 2675 FOUND SURVEY NAIL IN THE ROAD SURFACE, REMOVED AND FOUND NO ADDITIONAL MONUMENTS BELOW. CORNER WAS VERIFIED BY SECTION SUMMARY BY PLS 606. ACCEPTED THE SURVEY NAIL AS THE BEST EVIDENCE OF THE CORNER LOCATION. SET 1 NEW TIE AND MEASURED TO 3 FOUND WISDOT ALUMINUM MONUMENTS.



LOCATION
(INDICATE CORNER BY "X")

SEAL:



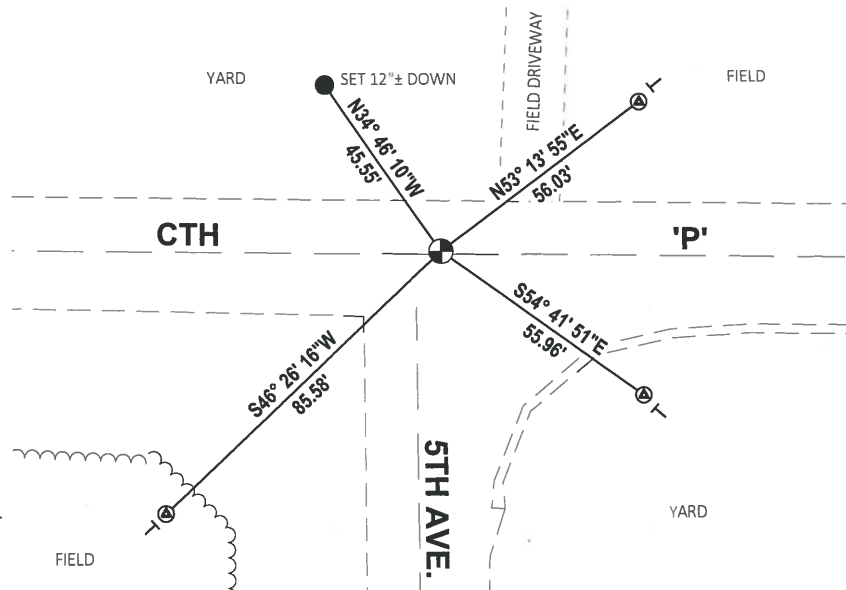
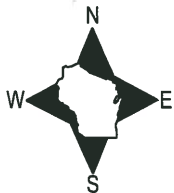
DATA SHOWN HERE ON THIS TIE SHEET IS CORRECT AND COMPLETE TO THE BEST OF MY KNOWLEDGE AND BELIEF.

PROFESSIONAL LAND SURVEYOR

DATE 5/28/2020

- TIE SKETCH

NOTE: THE CORNER LANDS .6± NORTH OF CTH 'P' CENTERLINE.



- SET 3/4" x 18" IRON REBAR, 1.50#/FT
- ⊙ FOUND WISDOT ALUMINUM CAP MONUMENT
- ⊙ FOUND SURVEY NAIL MONUMENT
- VINYL "T" POST

ADAMS COUNTY

Survey Monument Record

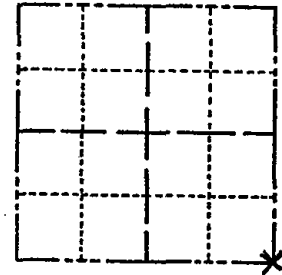
TYPE OF MONUMENT: HARRISON
STATE PLANE COORDINATES: N _____
E _____

ELEVATION — M.S.L. DATUM: _____

THETA ANGLE: _____

FIELD BOOK: ADAMS-1 PAGE 69

CORNER NO. 534
SECTION 17
TOWN 14
RANGE 7



LOCATION
(Indicated by 'X')

SEAL:

BASIS FOR MONUMENT LOCATION

(Use reverse side if necessary)

Show info such as: History of corner, with reference to Vol. and pg, dates, surveyor; exact description of monument replaced; if location computed, by taped or EDM traverse; landowner remarks, etc.

TIES ARE TO 20# SPIKE - EXCEPT MONUMENT
AREA MACHINE EXCAVATED.
DISTANCES CHECKED BY E.D.M.
MEASUREMENTS ARE HORIZONTAL

CORNER G.K. 10-22-76 RN-SS
" " 11/28/95 JG-SS
" " 6/11/01 JG
1-CONE, 5 TIES LEFT 1-24-06 - JG
" 4 2-16-11 SS



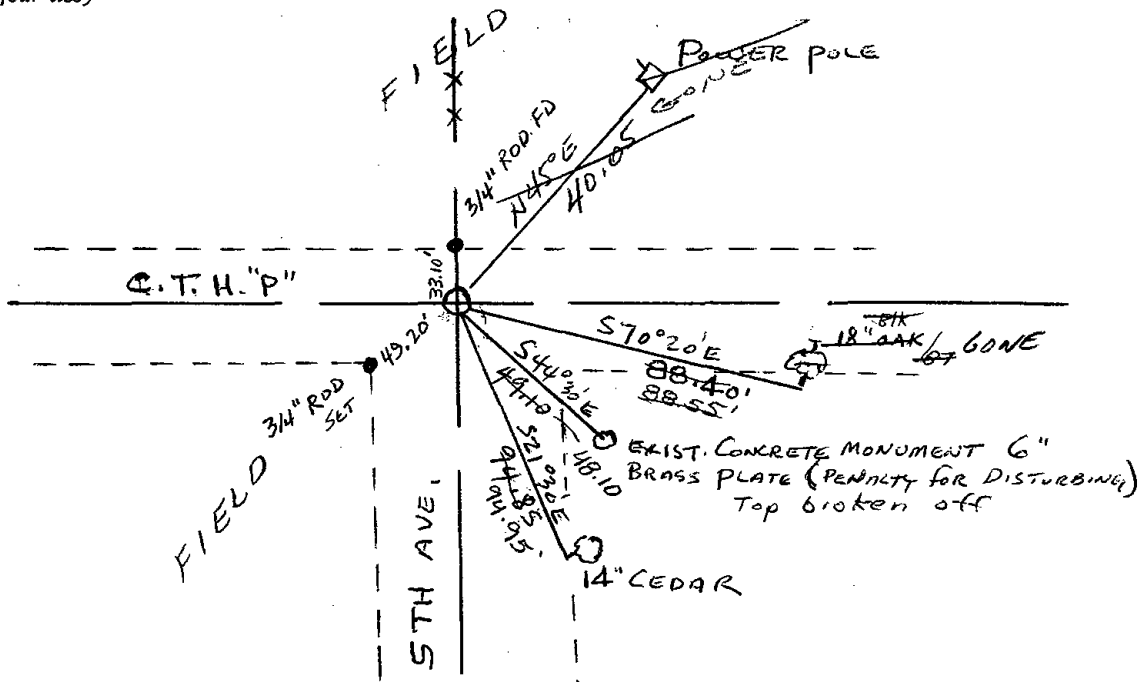
CERTIFIED CORRECT:

Herman Holzmiller
Registered Land Surveyor 5-776

DATE: 12-16-74

TIE SKETCH

(Show at least four ties)



MAINTENANCE RECORD

Date	Init.	Remarks
12-10-81	SK-DW	CORNER O.K.
2-19-46	GR-SS	OK
11-5-90	JG-SS	"

MS COUNTY

Survey Monument Record

TYPE OF MONUMENT: HARRISON

STATE PLANE COORDINATES: N _____

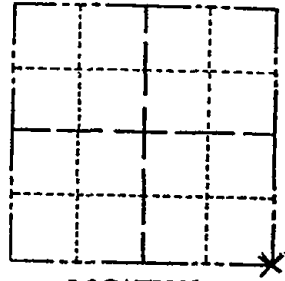
E _____

ELEVATION — M.S.L. DATUM: _____

THETA ANGLE: _____

FIELD BOOK: ADAMS-1 PAGE 69

CORNER NO. 534
SECTION 17
TOWN 14
RANGE 7



LOCATION
(Indicated by 'X')

SEAL:



BASIS FOR MONUMENT LOCATION

(Use reverse side if necessary)

Show info such as: History of corner, with reference to Vol. and pg. dates, surveyor; exact description of monument replaced; if location computed, by taped or EDM traverse; landowner remarks, etc.

TIES ARE TO 20# SPIKE - EXCEPT MONUMENT
AREA MACHINE EXCAVATED.
DISTANCES CHECKED BY E.D.M.
MEASUREMENTS ARE HORIZONTAL

CORNER C.E. 10-22-76 RN-SS
" " 11/22/95 JG-SS
NEW TIES 12/14/00 SH-MC

CERTIFIED CORRECT:

Herman Holzmiller
Registered Land Surveyor 5-776

DATE: 12-16-74

TIE SKETCH

(Show at least four ties)

