

21
SECTION

14
TOWN

07
RANGE

ADAMS COUNTY

COUNTY CORNER NO: 77

ROMPORTOL ID: 41407212000

PUBLIC LAND SURVEY MONUMENT RECORD

TYPE OF MONUMENT: HARRISON (BROKEN-TOP)
ADAMS COUNTY COORDINATES, NAD 83 (2007)

N. 114079.765

E. 573125.273

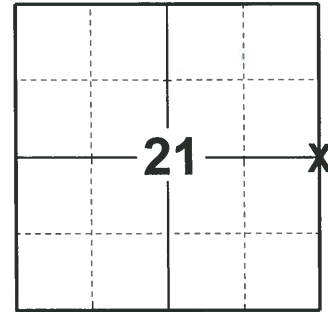
ELEVATION- DATUM

FIELD WORK DATE: 04/23/2020

BASIS FOR MONUMENT LOCATION

1980 - PLS 1478 SET EQUIDISTANT AND ON LINE BETWEEN ADJACENT SECTION CORNERS. NO EVIDENCE OF IRON BAR REFERRED TO BY A. BARRETT IN VOL. 1 PAGE 11 OF ADAMS COUNTY SURVEY RECORDS WAS FOUND. NO EXCAVATION WAS MADE DUE TO CUT AREA IN COUNTY TRUNK HIGHWAY. THIS LOCATION FITS SECTION DIMENSIONS AND POSSESSION VERY WELL.

2020 - PLS 2675 FOUND HARRISON (BROKEN-TOP) 12"± BELOW THE ROAD SURFACE AND 1 WITNESS. THE MONUMENT AGREES WITH THE WITNESS. VERIFIED MONUMENT IS ON A NEAR STRAIGHT LINE AND EQUIDISTANT SPLIT BETWEEN ADJACENT CORNERS. ACCEPTED THE HARRISON (BROKEN-TOP) AS THE CORNER LOCATION. SET 3 NEW TIES AND MEASURED TO A FOUND PROPERTY IRON AND THE EXISTING WITNESS.



LOCATION
(INDICATE CORNER BY "X")

SEAL:



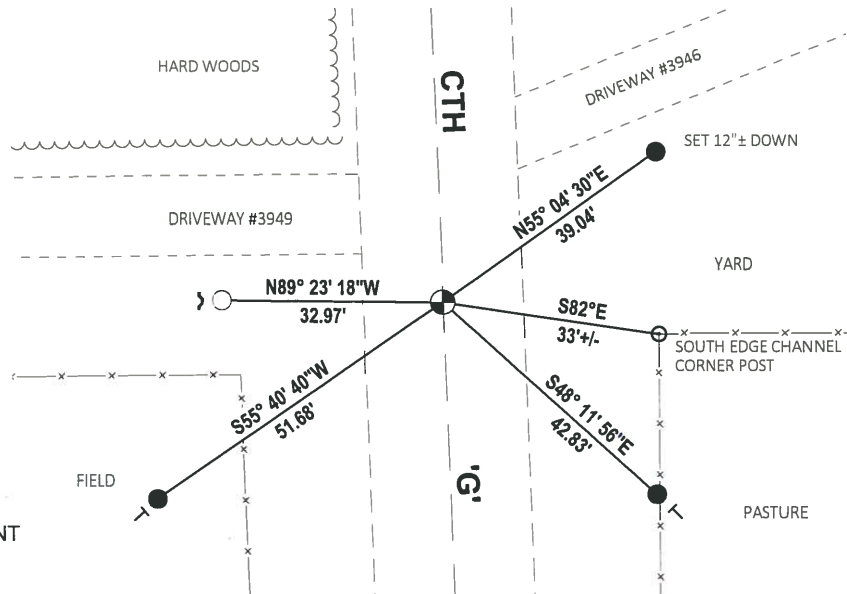
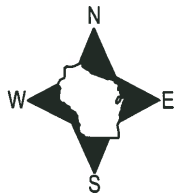
DATA SHOWN HERE ON THIS TIE SHEET IS CORRECT AND COMPLETE TO THE BEST OF MY KNOWLEDGE AND BELIEF.

PROFESSIONAL LAND SURVEYOR

DATE 5/28/2020

- TIE SKETCH

NOTE: THE CORNER LANDS ON THE CENTERLINE OF CTH 'G'.



- SET 3/4" x 18" IRON REBAR, 1.50#/FT
- FOUND 3/4" IRON ROD
- ⊕ FOUND HARRISON (BROKEN-TOP) MONUMENT
- ┘ STEEL FENCE POST
- └ VINYL "T" POST

Government Land Corner Certificate

ADAMS County

TYPE OF MONUMENT: HARRISON

STATE PLANE COORDINATES: N _____
E _____

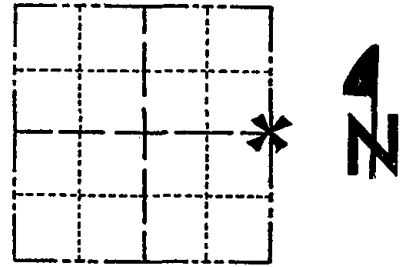
ELEVATION — M.S.L. DATUM: _____

THETA ANGLE: _____

FIELD BOOK: A-F2 PAGE 103

DRAWN BY: S. SORENSEN

CORNER NO. 77
SECTION 21
TOWN 14
RANGE 7



LOCATION
(Indicated by 'X')

BASIS FOR MONUMENT LOCATION

Show info such as: History of corner, with reference to Vol. and pg., dates, surveyor; exact description of monument replaced; if location computed, by taped or EDM traverse; landowner remarks, etc. (Use reverse side if necessary)

Set equidistant and on line between adjacent section corners. No evidence of iron bar referred to by A. Barrett in Vol. 1 page 11 of Adams County Survey Records was found. No excavation was made due to cut area in county trunk highway. This location fits section dimensions and possession very well.

SEAL:



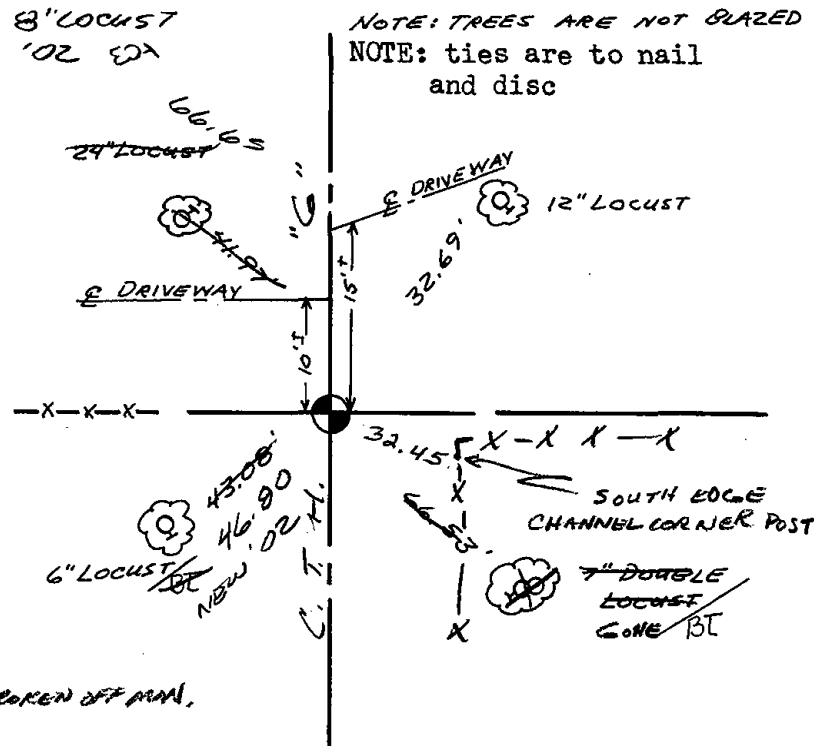
DATA SHOWN HERE ON
CERTIFIED CORRECT:

Gregory P Rhinehart
Registered Land Surveyor

DATE: 10-24-80

TIE SKETCH

Show at least four ties, also fence lines, roads, topo, size and type of witness trees and if off road - best way to arrive at corner.



MAINTENANCE RECORD

Date	Init.	Remarks
12-7-81	SK-DW	Ties o.k Mon. Beeps
2-19-86	GR-SS	ok
12-19-90	JG-KZ	OK
12-1-95	SS	"
3-14-02	JG-SS	3-GONE 3-NEW TIES, TOP BROKEN OFF MON.
2-7-06	JG	OK
2-25-11	SS	"