

PUBLIC LAND SURVEY MONUMENT RECORD

TYPE OF MONUMENT: HARRISON
ADAMS COUNTY COORDINATES, NAD 83 (2007)

N. 111475.454

E. 559872.187

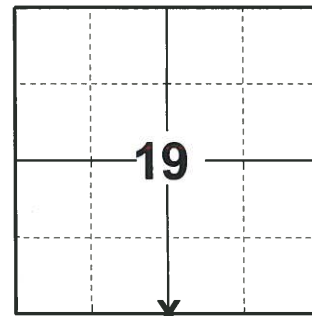
ELEVATION- _____ DATUM _____

FIELD WORK DATE: 04/29/2020

BASIS FOR MONUMENT LOCATION

1975 - PLS 922 FOUND LARGE OLD AXEL IN N-S FENCE AND ON PROJECTION OF FENCE FROM EAST. FIT TRANSIT-TAPE TRAVERSE OF SECTION GOOD. CHECKED COUNTY SURVEY RECORDS FOR RESURVEYS AND NON WERE ON FILE.

2020 - PLS 2675 FOUND HARRISON 4"± ABOVE THE GROUND AND 2 WITNESSES. THE MONUMENT AGREES WITH BOTH WITNESSES. ACCEPTED THE HARRISON AS THE CORNER LOCATION. SET 4 NEW TIES AND MEASURED TO THE EXISTING WITNESSES.



LOCATION

(INDICATE CORNER BY "X")

SEAL:



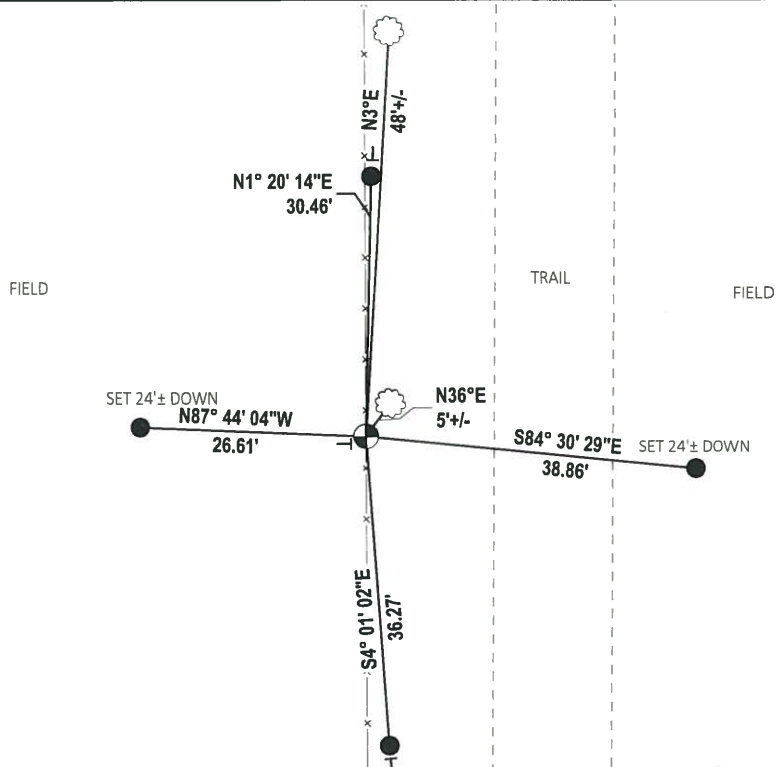
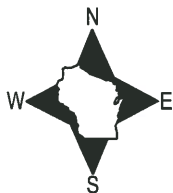
DATA SHOWN HERE ON THIS TIE SHEET IS CORRECT AND COMPLETE TO THE BEST OF MY KNOWLEDGE AND BELIEF.

PROFESSIONAL LAND SURVEYOR

DATE 5/28/2020

- TIE SKETCH

NOTE: THE CORNER LANDS 15'± WEST OF THE TRAIL.



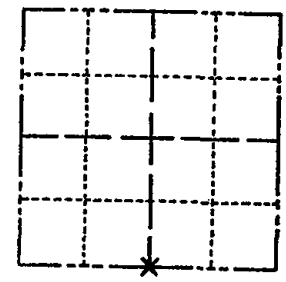
- SET 3/4" x 18" IRON REBAR, 1.50#/FT
- ⊕ FOUND HARRISON MONUMENT
- ┊ VINYL "T" POST
- ☼ WITNESS TREE

ADAMS COUNTY

Survey Monument Record

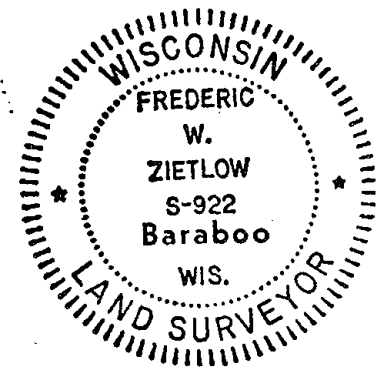
TYPE OF MONUMENT: 30" HARRISON
STATE PLANE COORDINATES: N
E
ELEVATION - M.S.L. DATUM:
THETA ANGLE:
FIELD BOOK: PAGE

CORNER NO. 760
SECTION 19
TOWN 14-N
RANGE 7-E



LOCATION (Indicated by 'X')

SEAL:



BASIS FOR MONUMENT LOCATION

(Use reverse side if necessary)

Show info such as: History of corner, with reference to Vol. and pg, dates, surveyor; exact description of monument replaced; if location computed, by taped or EDM traverse; landowner remarks, etc.

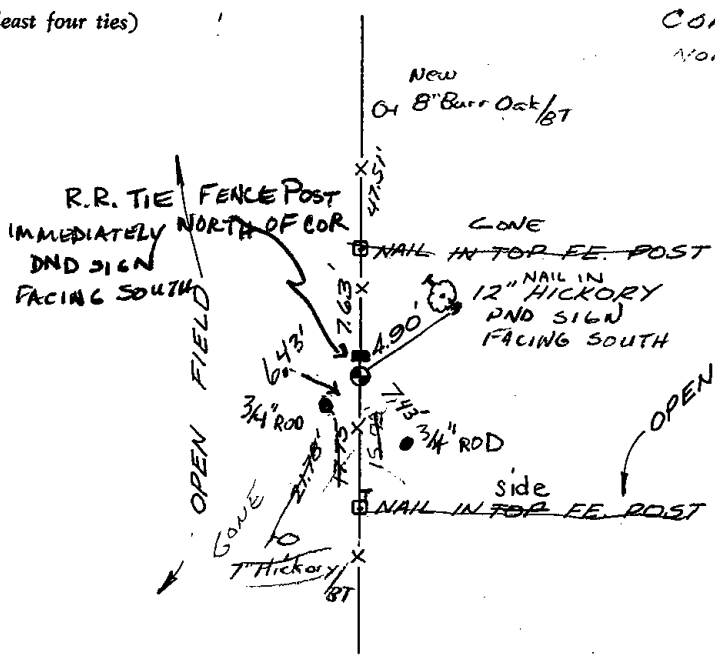
FOUND LARGE OLD AXEL IN N-S FENCE AND ON PROJECTION OF FENCE FROM EAST. FIT TRANSIT-TAPE TRAVERSE OF SECTION GOOD. CHECKED CO. SURVEY RECORDS FOR RESURVEYS AND NONE WERE ON FILE

CORNER O.K. 10-28-78 GR.DCH
CORNER O.K. 12-19-01 JG-JS
ALL OK, 1-19-86 -JG
OK 12-15-11 MS

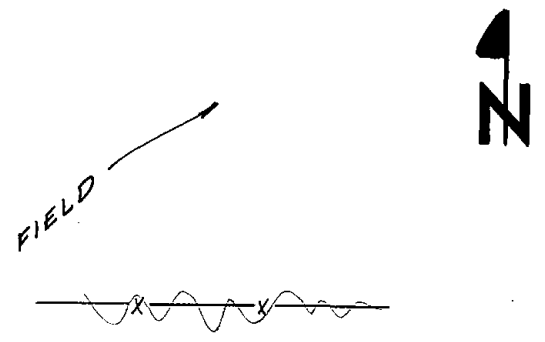
CERTIFIED CORRECT:
Frederic W. Zietlow
Registered Land Surveyor
DATE: July 31, 1975

TIE SKETCH

(Show at least four ties)

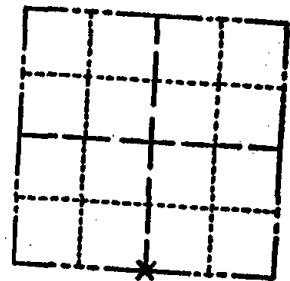


CORNER IS 500'± NORTH OF FARM BUILDINGS



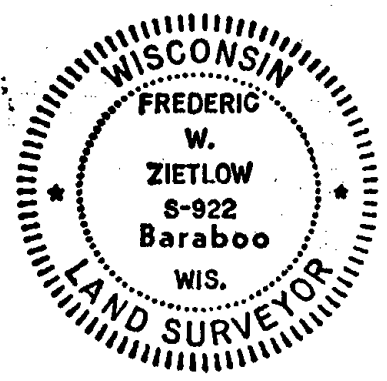
TYPE OF MONUMENT: 30" HARRISON
 STATE PLANE COORDINATES: N _____
 E _____
 ELEVATION — M.S.L. DATUM: _____
 THETA ANGLE: _____
 FIELD BOOK: _____ PAGE _____

SECTION 19
 TOWN 14-N
 RANGE 7-E



LOCATION
 (Indicated by 'X')

SEAL:



BASIS FOR MONUMENT LOCATION

(Use reverse side if necessary)

Show info such as: History of corner, with reference to Vol. and pg. dates, surveyor; exact description of monument replaced; if location computed, by taped or EDM traverse; landowner remarks, etc.

FOUND LARGE OLD AXEL IN N-S FENCE AND ON PROJECTION OF FENCE FROM EAST. FIT TRANSIT-TAPE TRAVERSE OF SECTION GOOD. CHECKED CO. SURVEY RECORDS FOR RESURVEYS AND NONE WERE ON FILE

CORNER O.K. 10-28-76 GR DCH
 Tics 8-12-92 M.C. + CR

CERTIFIED CORRECT:

Frederic W. Zietlow
 Registered Land Surveyor

DATE: July 31, 1975

TIE SKETCH

(Show at least four ties)

