

PUBLIC LAND SURVEY MONUMENT RECORD

TYPE OF MONUMENT: HARRISON (BROKEN-TOP)
ADAMS COUNTY COORDINATES, NAD 83 (2007)

N. 111495.502

E. 567815.664

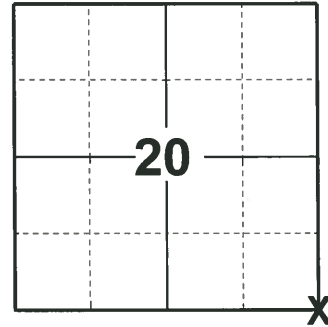
ELEVATION- _____ DATUM _____

FIELD WORK DATE: 04/23/2020

BASIS FOR MONUMENT LOCATION

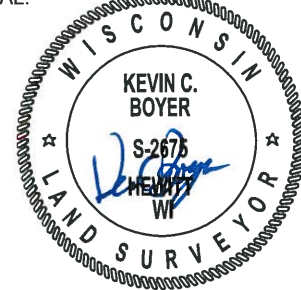
1980 - PLS 1478 FOUND CONCRETE MONUMENT STAMPED WITH DISTANCE TO CORNER IN THE SOUTHWEST QUADRANT OF ROAD INTERSECTION. THIS MONUMENT IS NOTED IN VOL. 2, PAGE 87 OF ADAMS COUNTY SURVEY RECORDS BY AN ADDED PENCIL NOTE. EXCAVATION BY HAND AT RECORDED DISTANCE FROM CONCRETE AND STONE FOUND TO WEST REVEALED NO EVIDENCE OF ANY PREVIOUS MONUMENTATION. A POINT RECORD DISTANCE FROM CONCRETE MONUMENT AT CENTERLINE OF INTERSECTION BEST FITS ADJOINING SECTION DIMENSIONS.

2020 - PLS 2675 FOUND HARRISON (BROKEN-TOP) 12"± BELOW THE ROAD SURFACE AND 2 WITNESSES. THE MONUMENT AGREES WITH BOTH WITNESSES. ACCEPTED THE HARRISON (BROKEN-TOP) AS THE CORNER LOCATION. SET 4 NEW TIES AND MEASURED TO THE EXISTING WITNESSES.



LOCATION
(INDICATE CORNER BY "X")

SEAL:



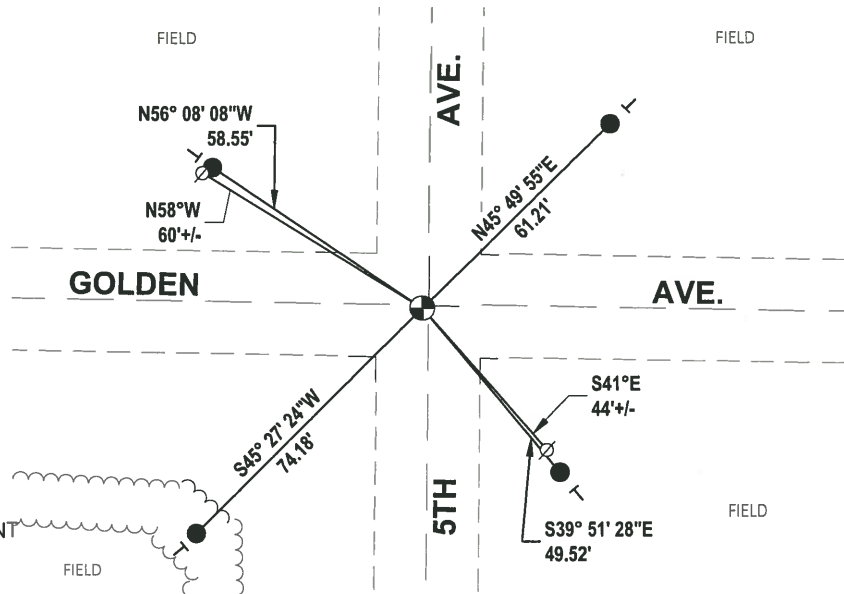
DATA SHOWN HERE ON THIS TIE SHEET IS CORRECT AND COMPLETE TO THE BEST OF MY KNOWLEDGE AND BELIEF.

PROFESSIONAL LAND SURVEYOR

DATE 5/28/2020

- TIE SKETCH

NOTE: THE CORNER LANDS 1.5'± WEST OF 5TH AVE. CENTERLINE AND ON THE CENTERLINE OF GOLDEN AVE.



- SET 3/4" x 18" IRON REBAR, 1.50#/FT
- ⊙ FOUND HARRISON (BROKEN-TOP) MONUMENT
- ∅ WITNESS POWER POLE
- | VINYL "T" POST

Government Land Corner Certificate

ADAMS County

TYPE OF MONUMENT: HARRISON

STATE PLANE COORDINATES: N _____
E _____

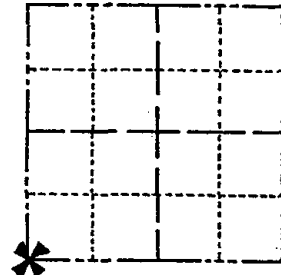
ELEVATION — M.S.L. DATUM: _____

THETA ANGLE: _____

FIELD BOOK: A-F 2 PAGE 100

DRAWN BY: SORENSEN

CORNER NO. 85
SECTION 21
TOWN 14
RANGE 7



LOCATION
(Indicated by 'X')

BASIS FOR MONUMENT LOCATION

Show info such as: History of corner, with reference to Vol. and pg., dates, surveyor; exact description of monument replaced; if location computed, by taped or EDM traverse; landowner remarks, etc. (Use reverse side if necessary)

Found concrete monument stamped with distance to corner in the southwest quadrant of road intersection. This monument is noted in Vol. 2, page 87 of Adams County Survey Records by an added pencil note. Excavation by hand at record distance from concrete and stone found to west revealed no evidence of any previous monumentation. A point record distance from concrete monument at centerline of intersection best fits adjoining section dimensions.

- 2636.72 MSA distance of south line of SE $\frac{1}{4}$ 20-14-7
- 2639.34 Original distance
- 2640.00 M. C. Smith March 21, 1921
- 2636.04 Z. Wise Dec. 15 and 16, 1875

SEAL:



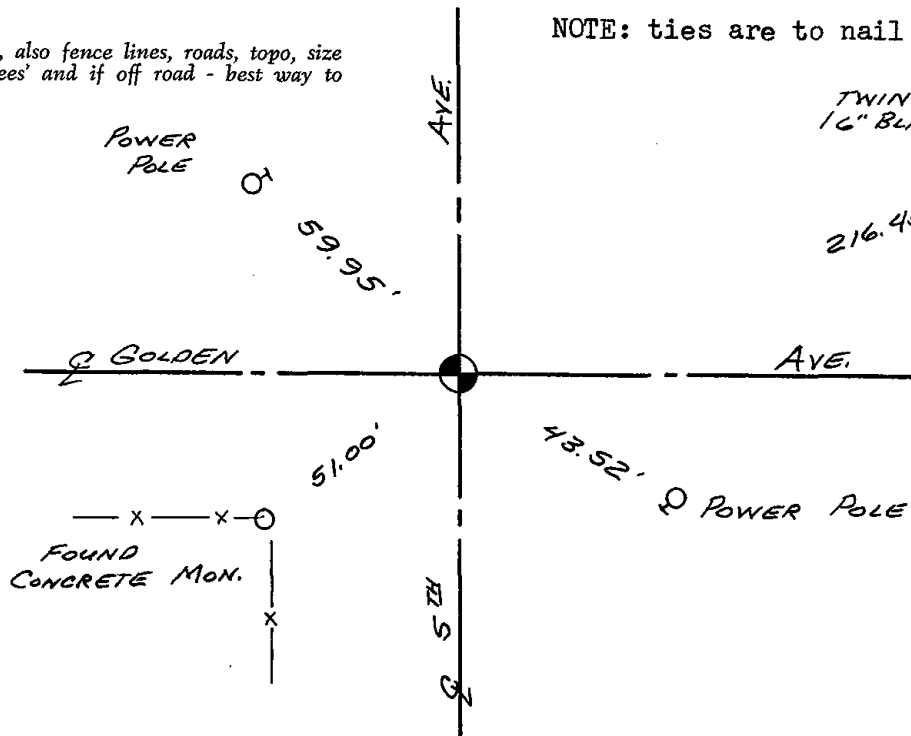
DATA SHOWN HERE ON
CERTIFIED CORRECT:

Gregory P. Rhinehart
Registered Land Surveyor

DATE: 10-24-80

TIE SKETCH

Show at least four ties, also fence lines, roads, topo, size and type of witness trees and if off road - best way to arrive at corner.



NOTE: ties are to nail and disc

TWIN
16" BLACK OAK / 8'

Government Land Corner Certificate

ADAMS County

TYPE OF MONUMENT: HARRISON
 STATE PLANE COORDINATES: N _____
 E _____
 ELEVATION — M.S.L. DATUM: _____
 THETA ANGLE: _____
 FIELD BOOK: A-F 2 PAGE 100
 DRAWN BY: SORENSEN

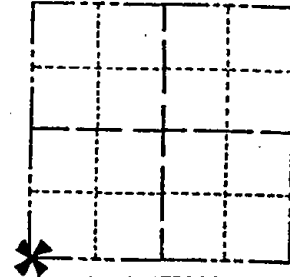
CORNER NO. 85
 SECTION 21
 TOWN 14
 RANGE 7

BASIS FOR MONUMENT LOCATION

Show info such as: History of corner, with reference to Vol. and pg., dates, surveyor; exact description of monument replaced; if location computed, by taped or EDM traverse; landowner remarks, etc. (Use reverse side if necessary)

Found concrete monument stamped with distance to corner in the southwest quadrant of road intersection. This monument is noted in Vol. 2, page 87 of Adams County Survey Records by an added pencil note. Excavation by hand at record distance from concrete and stone found to west revealed no evidence of any previous monumentation. A point record distance from concrete monument at centerline of intersection best fits adjoining section dimensions.

- 2636.72 MSA distance of south line of SE 1/4 20-14-7
- 2639.34 Original distance
- 2640.00 M. C. Smith March 21, 1921
- 2636.04 Z. Wise Dec. 15 and 16, 1875



LOCATION
(Indicated by 'X')

SEAL:



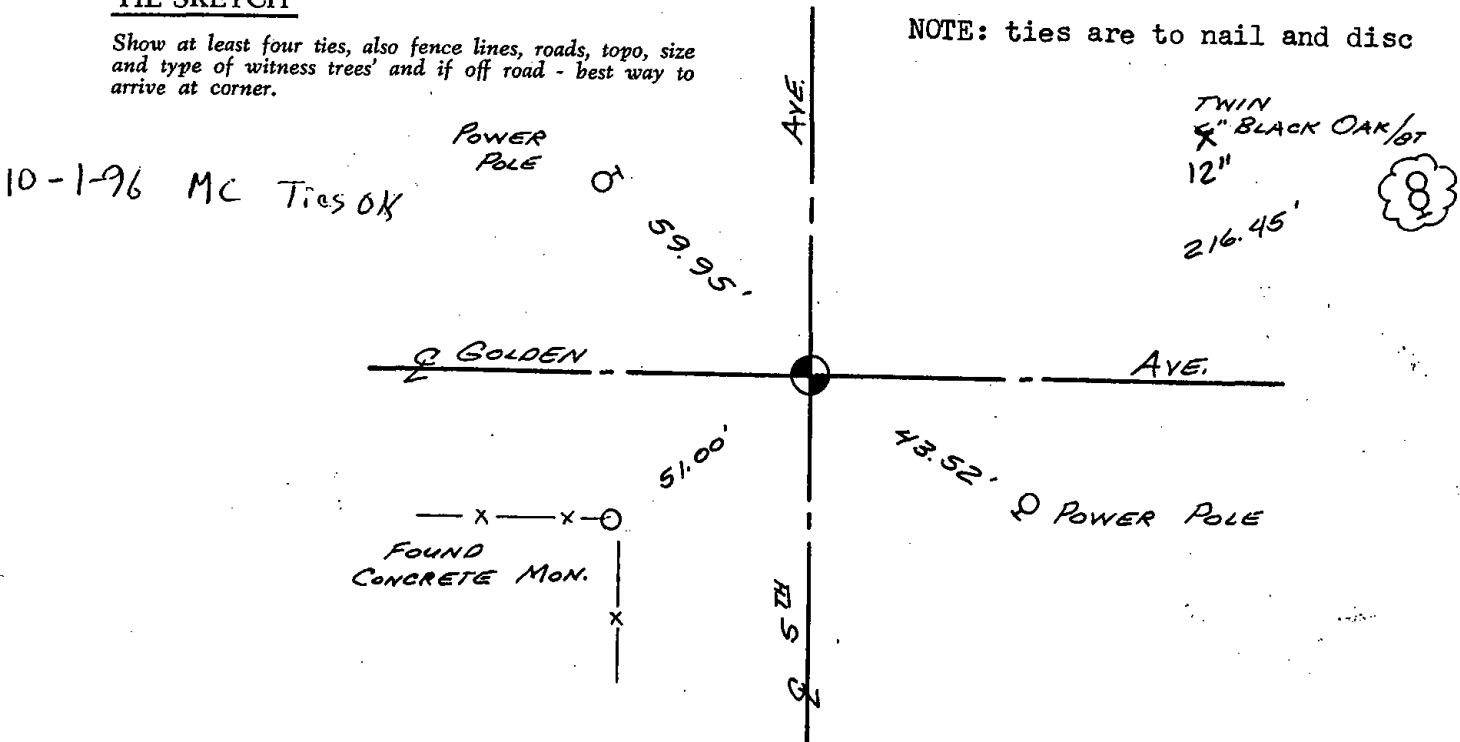
DATA SHOWN HERE ON
CERTIFIED CORRECT:

Gregory P. Rhinehart
Registered Land Surveyor

DATE: 10-24-80

TIE SKETCH

Show at least four ties, also fence lines, roads, topo, size and type of witness trees' and if off road - best way to arrive at corner.



NOTE: ties are to nail and disc

TWIN
4" BLACK OAK 1/8"
12"
216.45'

FOUND
CONCRETE MON.