

24  
SECTION

14  
TOWN

07  
RANGE

# ADAMS COUNTY

COUNTY CORNER NO: 93C

ROMPORTOL ID: 41407240000C

## PUBLIC LAND SURVEY MONUMENT RECORD

TYPE OF MONUMENT: 1-1/4" IRON ROD  
ADAMS COUNTY COORDINATES, NAD 83 (2007)

N. 111437.285

E. 588753.703

ELEVATION- - - - DATUM - - - -

FIELD WORK DATE: 04/21/2020

### BASIS FOR MONUMENT LOCATION

2000 - PLS 2021 SECTION CORNER FALLS IN LAKE. FOUND MEANDER CORNER TO SOUTH OF LAKE AND EXTENDED EAST SECTION LINE FROM E1/4 CORNER THROUGH MEANDER CORNER TO MEET LINE BETWEEN NORTH MEANDER CORNER OF SECTION 25 AND N1/4 CORNER OF SECTION 30-14-8. COMPUTING SECTION CORNERS THUS, SET THIS MEANDER CORNER 173.51 FEET WEST OF COMPUTED POINT.

2020 - PLS 2675 FOUND 1-1/4" IRON ROD 2"± ABOVE THE GROUND AND 4 TIES. THE MONUMENT AGREES WITH ALL 4 TIES. ACCEPTED THE 1-1/4" IRON ROD AS THE MEANDER CORNER LOCATION AND MEASURED TO THE 4 EXISTING TIES.



LOCATION

(INDICATE CORNER BY "X")

SEAL:



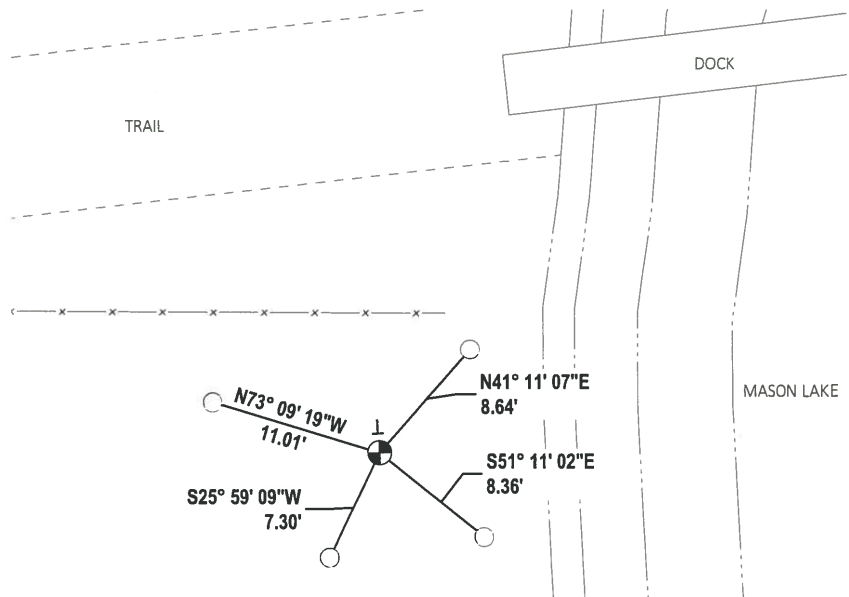
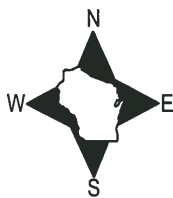
DATA SHOWN HERE ON THIS TIE SHEET IS CORRECT AND COMPLETE TO THE BEST OF MY KNOWLEDGE AND BELIEF.

PROFESSIONAL LAND SURVEYOR

DATE 5/28/2020

### - TIE SKETCH

NOTE: THE CORNER LANDS 8"± SOUTH OF THE FENCE.



- FOUND 3/4" IRON ROD
- ⊕ FOUND 1-1/4" IRON ROD MONUMENT
- VINYL "T" POST