

PUBLIC LAND SURVEY MONUMENT RECORD

TYPE OF MONUMENT: HARRISON (BROKEN-TOP)
ADAMS COUNTY COORDINATES, NAD 83 (2007)

N. 108699.956

E. 578404.510

ELEVATION- - - DATUM - -

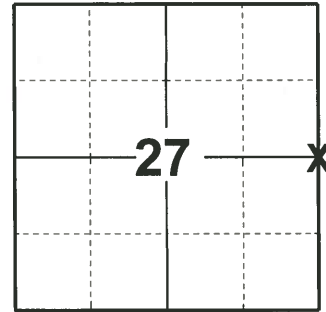
FIELD WORK DATE: 04/28/2020

BASIS FOR MONUMENT LOCATION

1976 - PLS 1191 RESEARCHED ADAMS COUNTY SURVEY NOTES AND ORIGINAL GOVERNMENT NOTES, FOUND NOTHING AS BEING SET AT CORNER ON RECORD. LOOKED FOR ORIGINAL GOVERNMENT BEARING TREES BUT HAVE BEEN DESTROYED. SOUNDED CENTERLINE IN ROAD IN LINE WITH NORTH-SOUTH FENCE LINE AND PICKED UP METAL OBJECT. DUG AND FOUND 3"x8"x8" SANDSTONE 12" BELOW SURFACE OF ROAD WITH CROSS ON TOP WITH BUGGY AXLE UNDERNEATH. SET HARRISON AT THIS POINT. EDM TRAVERSE.

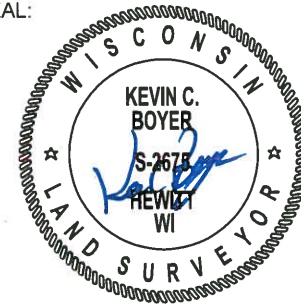
2008 - PLS 2021 FOUND HARRISON (BROKEN-TOP) MONUMENT AND TWO TIES FROM AL ROHDE 10-7-76 TIE SHEET. SET 2 ADDITIONAL TIES.

2020 - PLS 2675 FOUND HARRISON (BROKEN-TOP) 3"± BELOW THE ROAD SURFACE, 3 TIES AND 1 WITNESS. THE MONUMENT AGREES WITH ALL 3 TIES AND WITNESS. ACCEPTED THE HARRISON (BROKEN-TOP) AS THE CORNER LOCATION. SET 3 NEW TIES AND MEASURED TO THE EXISTING TIES AND WITNESS.



LOCATION
(INDICATE CORNER BY "X")

SEAL:



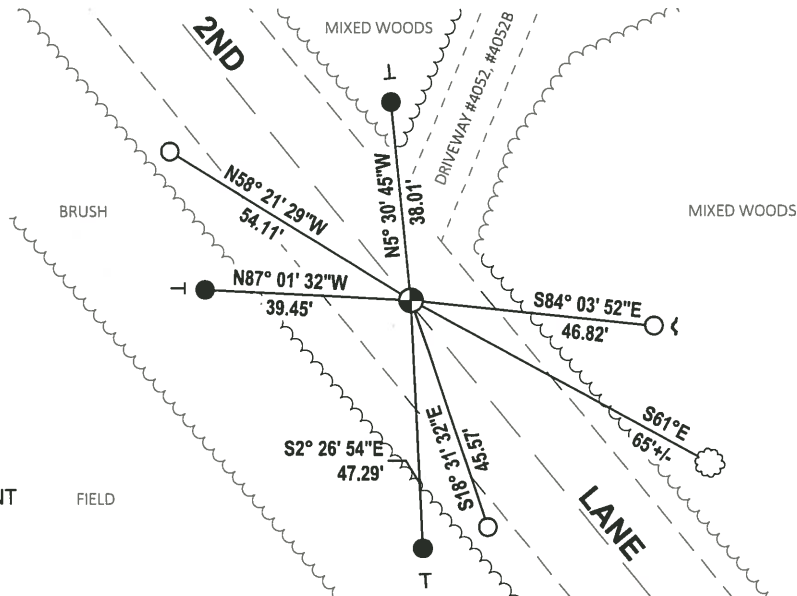
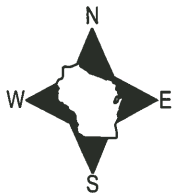
DATA SHOWN HERE ON THIS TIE SHEET IS CORRECT AND COMPLETE TO THE BEST OF MY KNOWLEDGE AND BELIEF.

PROFESSIONAL LAND SURVEYOR

DATE 5/28/2020

- TIE SKETCH

NOTE: THE CORNER LANDS ON THE CENTERLINE OF 2ND LANE.



- SET 3/4" x 18" IRON REBAR, 1.50#/FT
- FOUND 3/4" IRON ROD
- ⊕ FOUND HARRISON (BROKEN-TOP) MONUMENT
- ~ STEEL FENCE POST
- VINYL "T" POST
- ⊙ WITNESS TREE

U.S. PUBLIC LAND SURVEY MONUMENT RECORD

ADAMS COUNTY

TYPE OF MONUMENT: Harrison top broken off

STATE PLANE COORDINATES: N _____
E _____

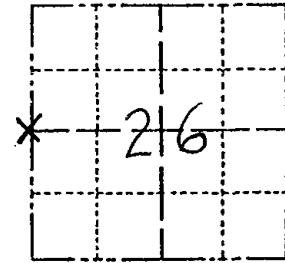
ELEVATION — M.S.L. DATUM: _____

THETA ANGLE: _____

FIELD BOOK: _____ PAGE _____

DRAWN BY: _____

CORNER NO. 98
SECTION 26
TOWN 14N
RANGE 7E



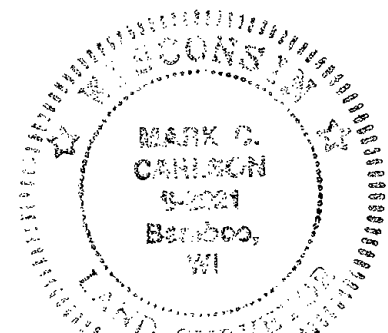
LOCATION
(Indicated by 'X')

BASIS FOR MONUMENT LOCATION

Show info such as: History of corner, with reference to Vol. and pg., dates, surveyor; exact description of monument replaced; if location computed, by taped or EDM traverse; landowner remarks, etc. (Use reverse side if necessary) (in conformance with Section A-E 502 of the Wisconsin Administrative Code)

I found monument and two ties from AL Rohde 10-7-76 tie sheet. AL Rohde had found 3" x 8" x 8" sandstone with cross and buggy axle at centerline. He replaced stone with harrison monument.

SEAL:



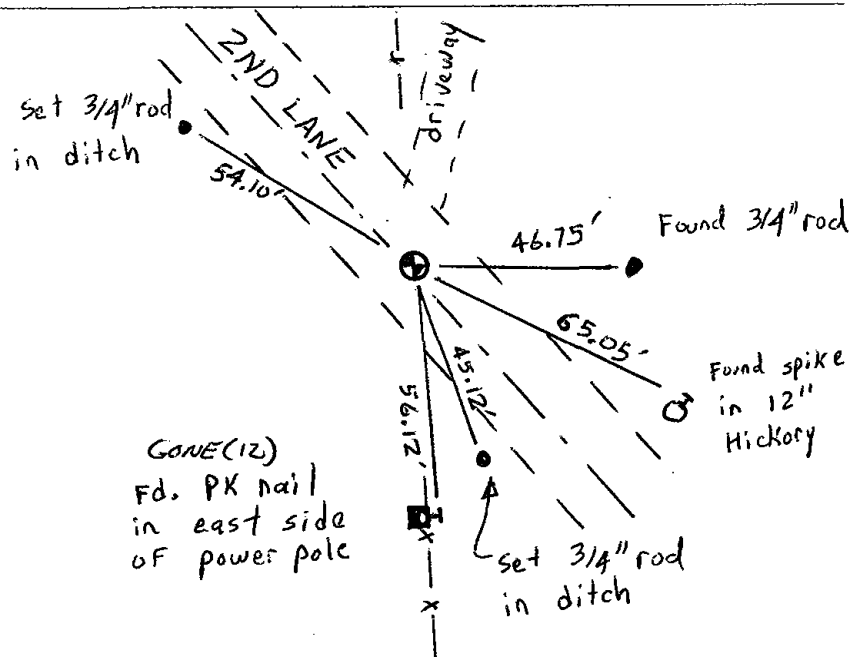
DATA SHOWN HERE ON
CERTIFIED CORRECT:

Mark C Carlson
Registered Land Surveyor

DATE: 4-10-08

TIE SKETCH

Show at least four ties, also fence lines, roads, topo, size and type of witness trees and if off road - best way to arrive at corner.



MAINTENANCE RECORD

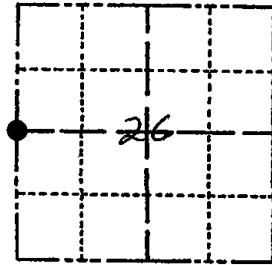
Date	Init.	Remarks
1-3-12	MS	1 GONE

ADAMS COUNTY

Survey Monument Record

TYPE OF MONUMENT: HARRISON
STATE PLANE COORDINATES: N _____
E _____
ELEVATION — M.S.L. DATUM: _____
THETA ANGLE: _____
FIELD BOOK: 486 PAGE 43

CORNER NO. 98
1096
SECTION 26
TOWN 14 N
RANGE 7 E



LOCATION
(Indicated by 'X')

SEAL:

BASIS FOR MONUMENT LOCATION

(Use reverse side if necessary)

Show info such as: History of corner, with reference to Vol. and pg, dates, surveyor; exact description of monument replaced; if location computed, by taped or EDM traverse; landowner remarks, etc.

Researched Adams County survey notes and original gov't notes found nothing as being set at corner on record. Looked for original gov't bearing trees but have been destroyed. Sounded & Road in line with m-s fence line and picked up metal object. Dug and found 3" x 8" x 8" sandstone 12" below surface of Road with cross on top with buggy axle underneath. Set HARRISON at this point. Ed.M. TRAVERSE



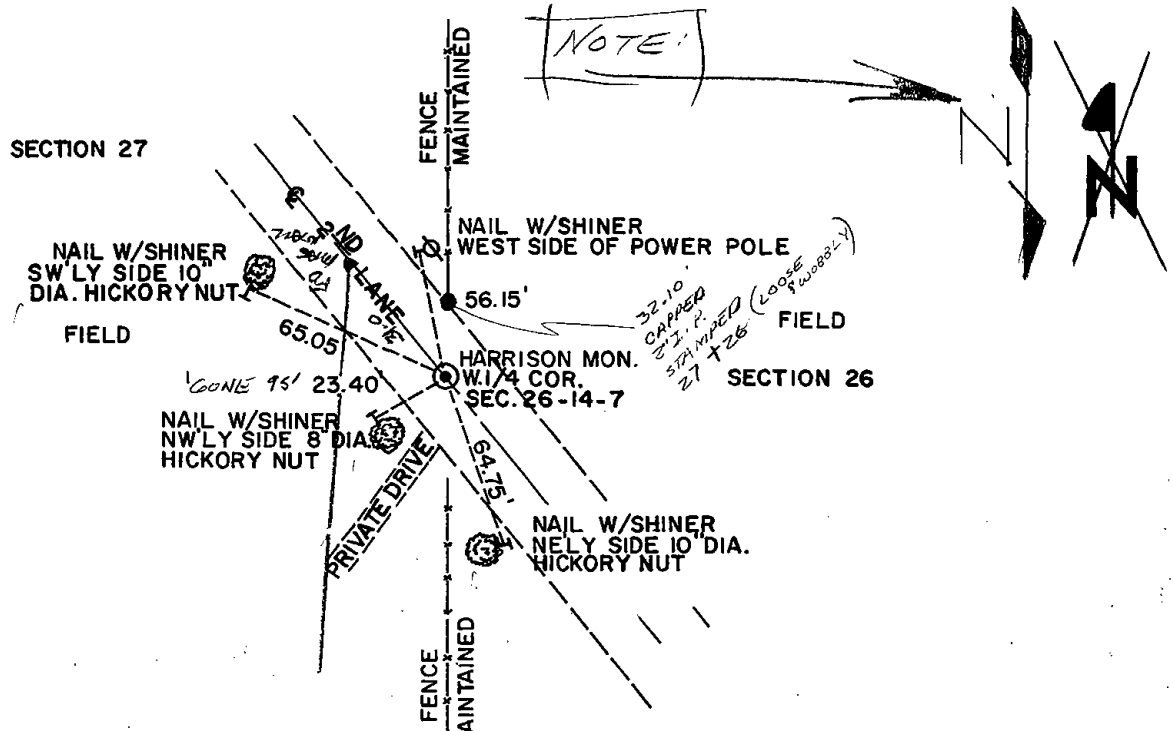
CERTIFIED CORRECT:

Allen D. Rohde
Registered Land Surveyor

DATE: 10-7-76

TIE SKETCH

(Show at least four ties)



MAINTENANCE RECORD

Date	Init.	Remarks
12-7-81	SK-DW	Ties OK Man. Beeps
3-17-76	GR-SS	" "
8-21-91	GR-JG	OK
11-28-95	JG-SS	1-GONE, 4 LEFT
1-26-06	" "	OK