

PUBLIC LAND SURVEY MONUMENT RECORD

TYPE OF MONUMENT: HARRISON (BROKEN-TOP)

ADAMS COUNTY COORDINATES, NAD 83 (2007)

N. 106201.918

E. 559843.808

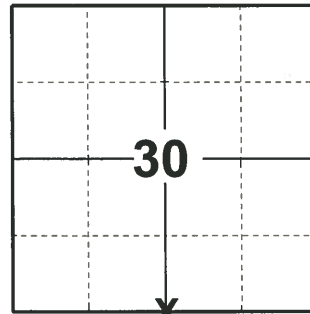
ELEVATION- - - - - DATUM - - - - -

FIELD WORK DATE: 05/05/2020

BASIS FOR MONUMENT LOCATION

1975 - PLS 922 CHECKED COUNTY SURVEY RECORDS AND NO RESURVEY WERE ON FILE. RAN EDM TRAVERSE OF SECTION AND COMPUTED WHERE TO SEARCH. AFTER EXCAVATION, RECOVERED POINTED STONE WITH 6"x5" BASE 12" LONG IN EAST-WEST- FENCE LINE. FIT EDM TRAVERSE OF SECTION GOOD. SET HARRISON.

2020 - PLS 2675 FOUND HARRISON (BROKEN-TOP) 4"± BELOW THE GROUND, 1 TIE, AND 1 WITNESS. THE MONUMENT AGREES WITH THE TIE AND WITNESS. ACCEPTED THE HARRISON (BROKEN-TOP) AS THE CORNER LOCATION. SET 4 NEW TIES AND MEASURED TO THE EXISTING TIE AND WITNESS.



LOCATION

(INDICATE CORNER BY "X")

SEAL:



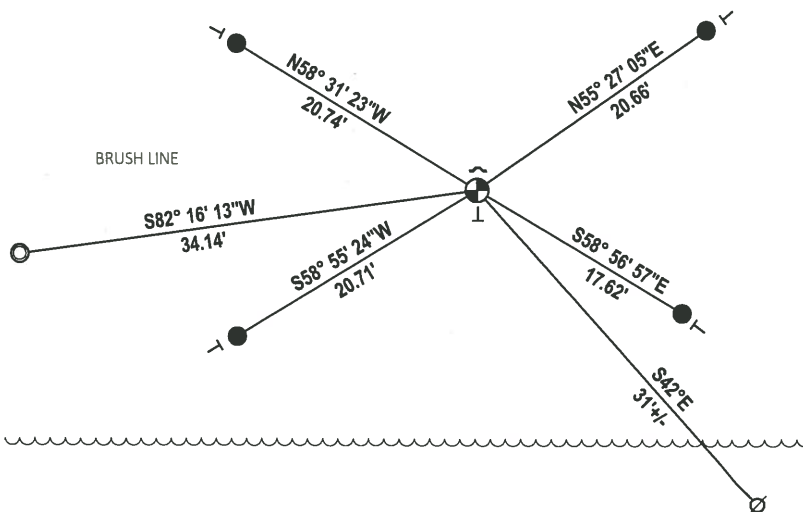
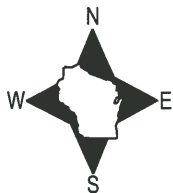
DATA SHOWN HERE ON THIS TIE SHEET IS CORRECT AND COMPLETE TO THE BEST OF MY KNOWLEDGE AND BELIEF.

PROFESSIONAL LAND SURVEYOR

DATE 5/28/2020

- TIE SKETCH

NOTE: THE CORNER LANDS 60'± NORTH OF A ASPHALT DRIVEWAY.



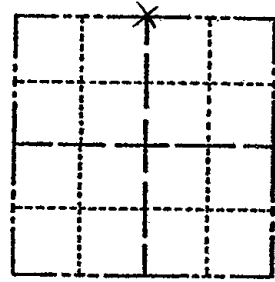
- SET 3/4" x 18" IRON REBAR, 1.50#/FT
- FOUND 1-1/4" O.D. IRON PIPE
- ⊕ FOUND HARRISON (BROKEN-TOP) MONUMENT
- ∅ WITNESS POWER POLE
- ↙ STEEL FENCE POST
- VINYL "T" POST

ADAMS COUNTY

Survey Monument Record

TYPE OF MONUMENT: 30" HARRISON
 STATE PLANE COORDINATES: N _____
 E _____
 ELEVATION — M.S.L. DATUM: _____
 THETA ANGLE: _____
 FIELD BOOK: _____ PAGE _____

CORNER NO. 890
 SECTION 31
 TOWN 14 N
 RANGE 7 E



LOCATION
(Indicated by 'X')



BASIS FOR MONUMENT LOCATION

(Use reverse side if necessary)

Show info such as: History of corner, with reference to Vol. and pg. dates, surveyor; exact description of monument replaced; if location computed, by taped or EDM traverse; landowner remarks, etc.

CHECKED COUNTY SURVEY RECORDS
 & NO RESURVEYS WERE ON FILE. RAN
 EDM. TRAVERSE OF SECTION & COMPUTED
 WHERE TO SEARCH. AFTER EXCAVATION
 WE RECOVERED POINTED STONE WITH
 6" X 5" BASE 12" LONG IN E-W FENCE
 LINE. FIT EDM. TRAVERSE OF SECTION
 GOOD.

- CORNER O.K. 10-22-76 PN-SS
- OK 4-25-96 JG-SS
- OK 4-3-02-JG
- OK 1-24-06-JG
- OK 12-15-11 MS

SEAL:



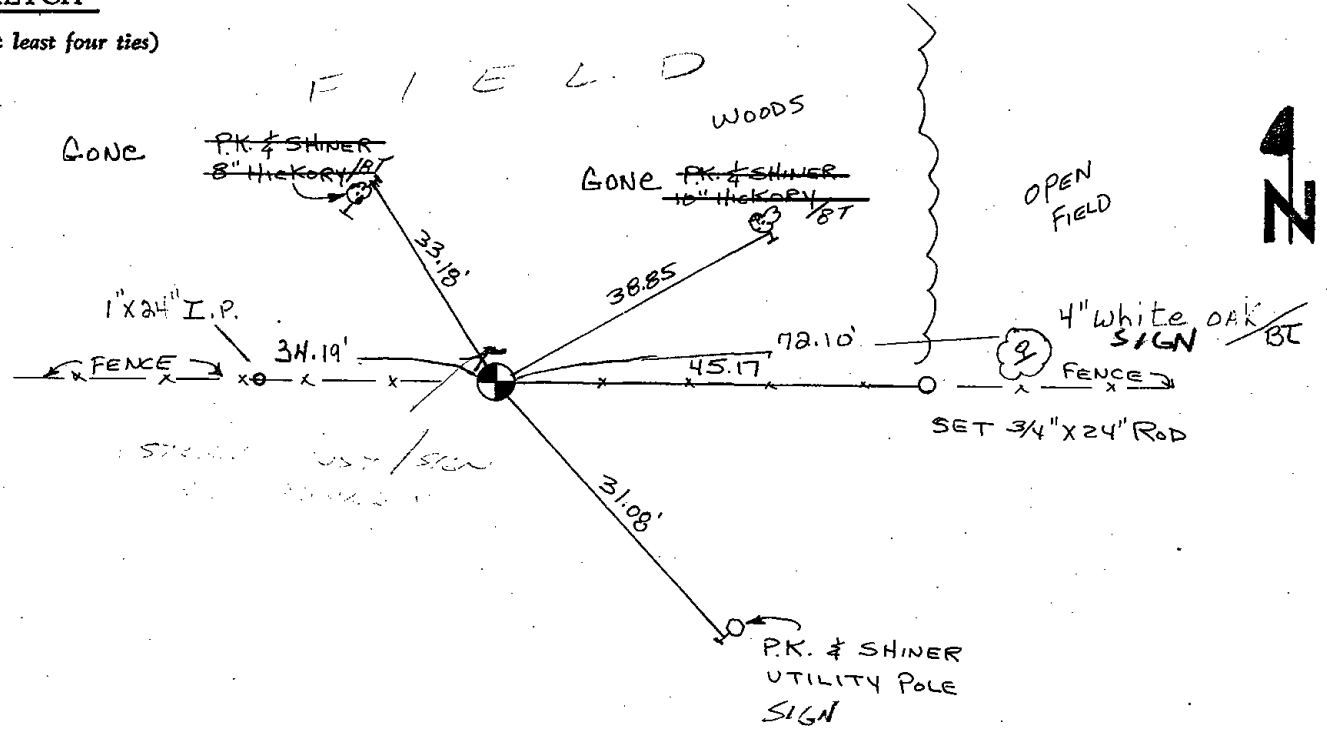
CERTIFIED CORRECT:

Frederic W. Zietlow
 Registered Land Surveyor

DATE: NOVEMBER 20, 1975

TIE SKETCH

(Show at least four ties)



ADAMS COUNTY

Survey Monument Record

TYPE OF MONUMENT: 30" HARRISON

STATE PLANE COORDINATES: N _____
E _____

ELEVATION — M.S.L. DATUM: _____

THETA ANGLE: _____

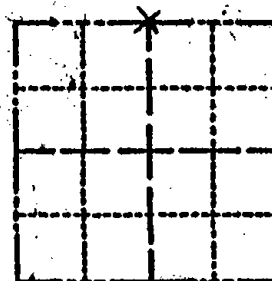
FIELD BOOK: _____ PAGE _____

CORNER NO. 890

SECTION 31

TOWN 14 N

RANGE 7E



LOCATION
(Indicated by 'X')

SEAL:



BASIS FOR MONUMENT LOCATION

(Use reverse side if necessary)

Show info such as: History of corner, with reference to Vol. and pg. dates, surveyor; exact description of monument replaced; if location computed, by taped or EDM traverse; landowner remarks, etc.

CHECKED COUNTY SURVEY RECORDS & NO RESURVEYS WERE ON FILE. RAN EDM TRAVERSE OF SECTION & COMPUTED WHERE TO SEARCH. AFTER EXCAVATION WE RECOVERED POINTED STONE WITH 6" X 5" BASE 12" LONG IN E-W FENCE LINE. FIT EDM TRAVERSE OF SECTION GOOD.

CORNER O.K. 10-22-76 RN-SS
~~NEW TIE 8-12-92 MOTOR~~
~~TOP BROKEN OFF~~

CERTIFIED CORRECT:

Frederic W. Zietlow
Registered Land Surveyor

DATE: NOVEMBER 20, 1975

TIE SKETCH

(Show at least four ties)

