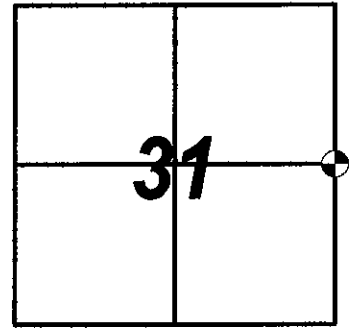


ADAMS COUNTY

CERTIFIED U.S. PUBLIC LAND SURVEY MONUMENT RECORD

COUNTY CORNER NO. 115



NORTHING = 103,580.80
EASTING = 562,504.67

This record shall show the location of the corner and shall include all of the following elements (a-h)

- (a) Identify the corner by the U.S. public land survey system
Corner monument restored:

**THE EAST 1/4 CORNER OF SECTION 31, T 14 N, R 07 E,
ADAMS COUITY, WISCONSIN.**

- (b) Describe any record evidence, monument evidence, occupational evidence, testimonial evidence or any other material evidence considered and whether the monument was found or placed.

**I FOUND A HARRISON MONUMENT 8" BELOW THE SURFACE
AS SHOWN IN BOYER 2020 RECORD.
AFTER WISDOT RESURFACING PROJECT 6566-00-72, I SET A
3" BERNTSEN SURVEY MARKER SPIKE AT THE CORNER.**

- (c) Draft a corner location sketch showing ties to at least 4 witness monuments made of durable lasting material.

- (d) The plan view sketch shall depict sufficient detail to enable accurate relocation of the corner monument if disturbed.

Bearings are Referenced to the Adams
County Coordinate System

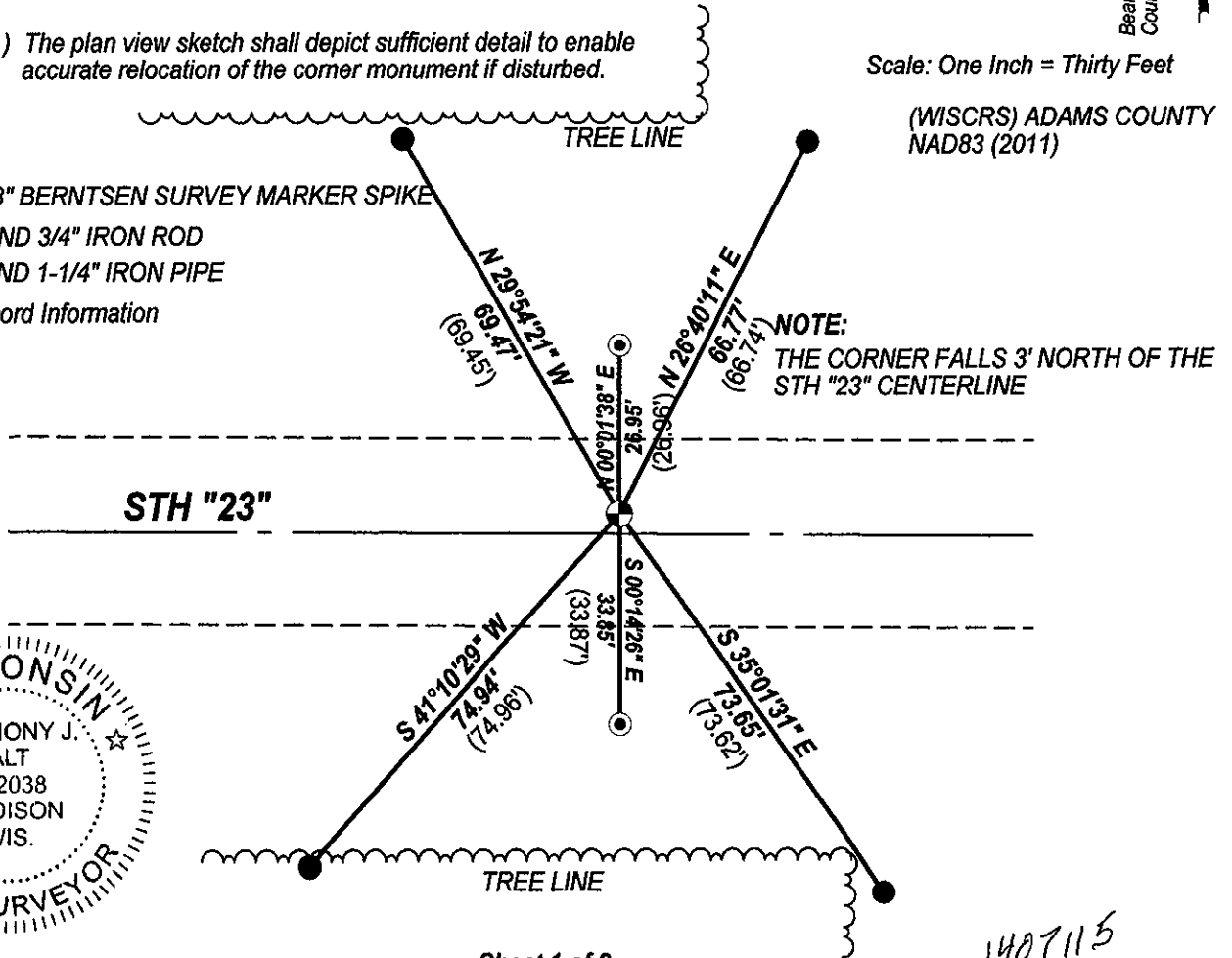
North

Scale: One Inch = Thirty Feet

(WISCRS) ADAMS COUNTY
NAD83 (2011)

LEGEND:

- ⊕ = SET 3" BERNTSEN SURVEY MARKER SPIKE
- = FOUND 3/4" IRON ROD
- ⊙ = FOUND 1-1/4" IRON PIPE
- () = Record Information



1407115

**ADAMS COUNTY
CERTIFIED U.S. PUBLIC LAND SURVEY
MONUMENT RECORD**

(e) Describe any material discrepancy between the location of the corner as restored or reestablished and the location of that corner as previously restored or reestablished by distance and direction. Show the discrepancy on the plan view drawing in (d). Show the distances between the corner as previously restored or reestablished and (1) the corner as restored or reestablished, and (2) to at least 4 of the witness monuments shown on the drawing in (d).

None.

(f) Was the corner restored through acceptance of (1) an obliterated evidence location, or (2) a found perpetuated location ?

This corner was accepted at its found location

(g) Was the corner reestablished through proportionate methods ? If so, show the method, including the directions and distances to other public land survey corners used as evidence or used for proportioning in determining the corner location.

No.

(h) I, Anthony J. Alt

hereby certify that the corner location shown on this record was determined by me or under my direction and control and that this U.S. public land survey monument record is correct and complete to the best of my knowledge and belief.

Anthony J. Alt 6-25-22



PUBLIC LAND SURVEY MONUMENT RECORD

TYPE OF MONUMENT: HARRISON
ADAMS COUNTY COORDINATES, NAD 83 (2007)

N. 103580.769

E. 562504.614

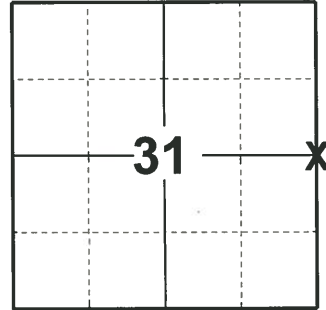
ELEVATION- - - - - DATUM - - - - -

FIELD WORK DATE: 05/06/2020

BASIS FOR MONUMENT LOCATION

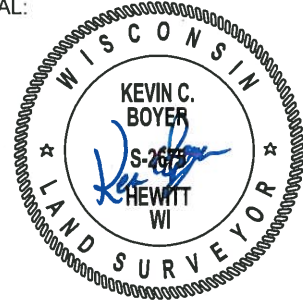
1974 - PLS 922 BY ELECTRONIC MAGNETIC LOCATOR RECOVERED A PARKER-KACON MASONRY NAIL SET BY SURVEYOR DAVID CLARK IN 1970. FIT EDM TRAVERSE OF THIS SECTION GOOD.

2020 - PLS 2675 FOUND HARRISON 8"± BELOW THE ROAD SURFACE , 2 TIES, AND 2 WITNESSES. THE MONUMENT AGREES WITH ALL TIES AND WITNESSES. ACCEPTED THE HARRISON AS THE CORNER LOCATION. SET 4 NEW TIES AND MEASURED TO THE EXISTING TIES AND WITNESSES.



LOCATION
(INDICATE CORNER BY "X")

SEAL:



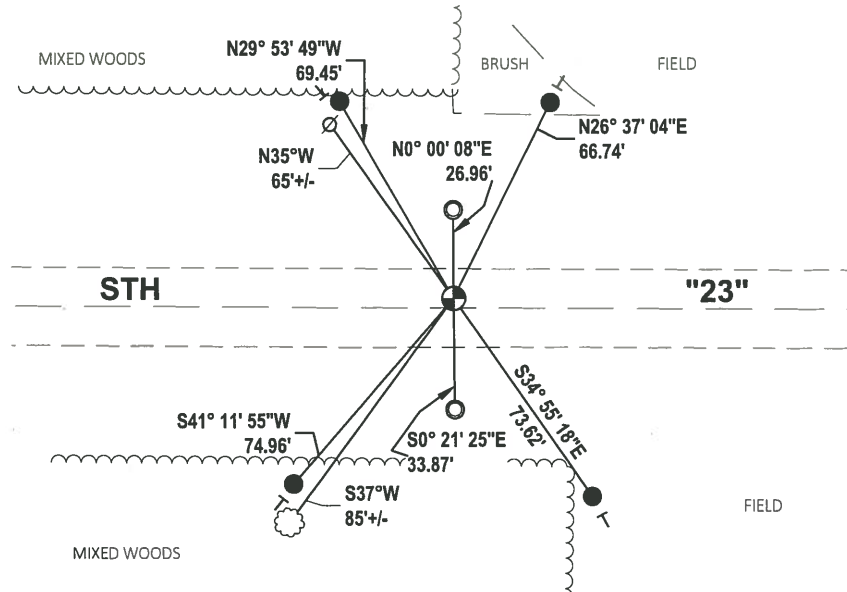
DATA SHOWN HERE ON THIS TIE SHEET IS CORRECT AND COMPLETE TO THE BEST OF MY KNOWLEDGE AND BELIEF.

PROFESSIONAL LAND SURVEYOR

DATE 5/28/2020

- TIE SKETCH

NOTE: THE CORNER LANDS 3± NORTH OF STH "23" CENTERLINE.



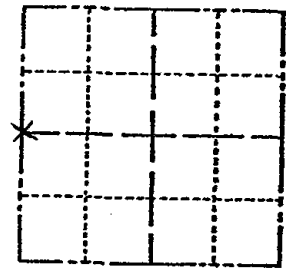
- SET 3/4" x 18" IRON REBAR, 1.50#/FT
- FOUND 1-1/4" O.D. IRON PIPE
- ⊙ FOUND HARRISON MONUMENT
- ∅ WITNESS POWER POLE
- VINYL "T" POST
- ⊗ WITNESS TREE

ADAMS COUNTY

Survey Monument Record

TYPE OF MONUMENT: HARRISON
 STATE PLANE COORDINATES: N _____
 E _____
 ELEVATION — M.S.L. DATUM: _____
 THETA ANGLE: _____
 FIELD BOOK: _____ PAGE _____

CORNER NO. 525
 SECTION 32
 TOWN 14 N
 RANGE 7 E



LOCATION
(Indicated by 'X')

BASIS FOR MONUMENT LOCATION

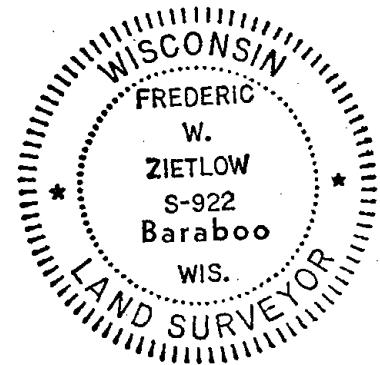
(Use reverse side if necessary)

Show info such as: History of corner, with reference to Vol. and pg. dates, surveyor; exact description of monument replaced; if location computed, by taped or EDM traverse; landowner remarks, etc.

By electronic magnetic locator we recovered a parker-kacon masonry nail set by surveyor David Clark in 1970. Fit EDM traverse of this section good.

CORNER OK 10-22-76 RN-SS

SEAL:



CERTIFIED CORRECT:

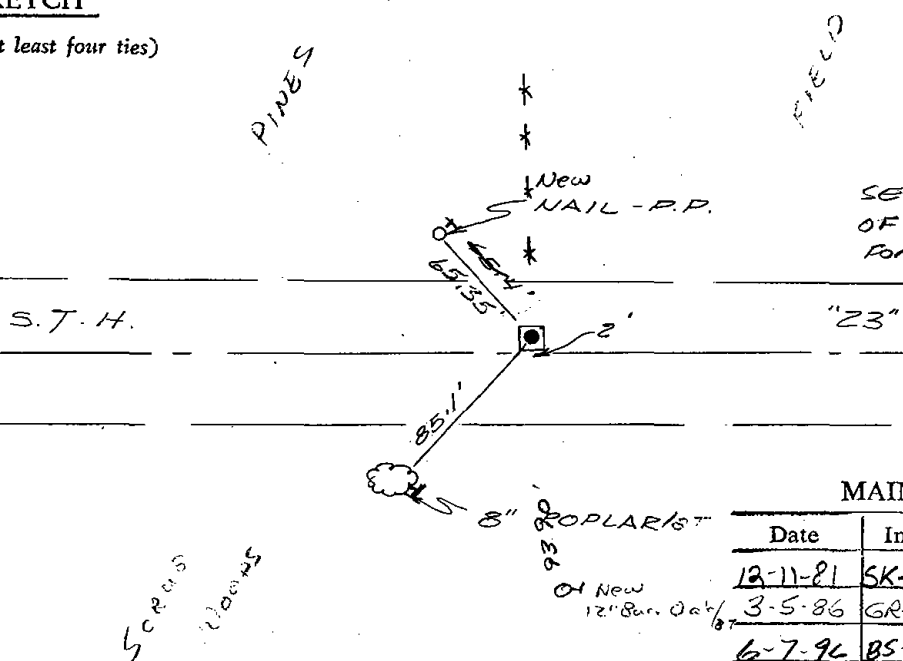
Frederic W. Zietlow

Registered Land Surveyor

DATE: 11-15-74

TIE SKETCH

(Show at least four ties)



SEE REVISED TIE SHEET OF 9-23-81 D.O.T. FOR IRONS N. & S.

MAINTENANCE RECORD

Date	Init.	Remarks
12-11-81	SK-DW	CORNER O.K
3-5-86	GR-SS	OK
6-7-96	BS-SS	OK
4-3-02	JG	OK SEE TIE SHEET DTD OCT 1, 01 SH-TW
1-3-12	ms	OK

ADAMS COUNTY

Survey Monument Record

TYPE OF MONUMENT: HARRISON

STATE PLANE COORDINATES: N _____

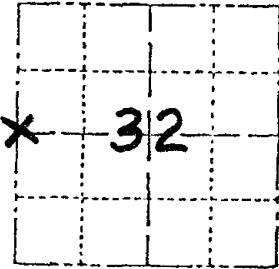
E _____

ELEVATION — M.S.L. DATUM: _____

THETA ANGLE: _____

FIELD BOOK: _____ PAGE _____

CORNER NO. 115
525
SECTION 32
TOWN 14 N
RANGE 7 E



LOCATION
(Indicated by 'X')

SEAL:

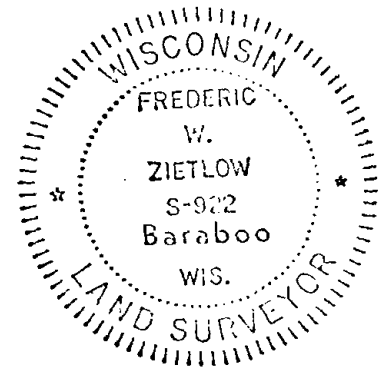
BASIS FOR MONUMENT LOCATION

(Use reverse side if necessary)

Show info such as: History of corner, with reference to Vol. and pg, dates, surveyor; exact description of monument replaced; if location computed, by taped or EDM traverse; landowner remarks, etc.

By electronic magnetic locator we recovered a parker-kacon masonry nail set by surveyor David Clark in 1970. Fit EDM traverse of this section good.

No Ties to this corner were found in the 1944 original Hwy survey Notes. Does conform to Hwy R/W Plat, 1949



CERTIFIED CORRECT:

Frederic W. Zietlow

Registered Land Surveyor

DATE: 11-15-74

TIE SKETCH

(Show at least four ties)

Iron Rod and Iron Pipes set in line with each other and Corner.

