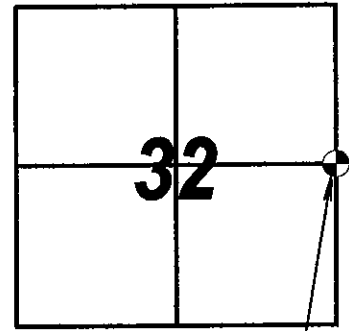


# ADAMS COUNTY

## CERTIFIED U.S. PUBLIC LAND SURVEY MONUMENT RECORD

COUNTY CORNER NO. 116



NORTHING = 103,543.68  
EASTING = 567,825.93

This record shall show the location of the corner and shall include all of the following elements ( a-h)

- ( a ) Identify the corner by the U.S. public land survey system

**Corner monument restored:**

**THE EAST 1/4 CORNER OF SECTION 32, T 14 N, R 07 E,  
ADAMS COUNTY, WISCONSIN.**

- ( b ) Describe any record evidence, monument evidence, occupational evidence, testimonial evidence or any other material evidence considered and whether the monument was found or placed.

**I FOUND A HARRISON MONUMENT 12" BELOW THE SURFACE  
AS SHOWN IN BOYER 2020 RECORD.  
AFTER WISDOT RESURFACING PROJECT 6566-00-72, I SET A  
3" BERNTSEN SURVEY MARKER SPIKE AT THE CORNER.**

- ( c ) Draft a corner location sketch showing ties to at least 4 witness monuments made of durable lasting material.

- ( d ) The plan view sketch shall depict sufficient detail to enable accurate relocation of the corner monument if disturbed.

Bearings are Referenced to the Adams  
County Coordinate System

North

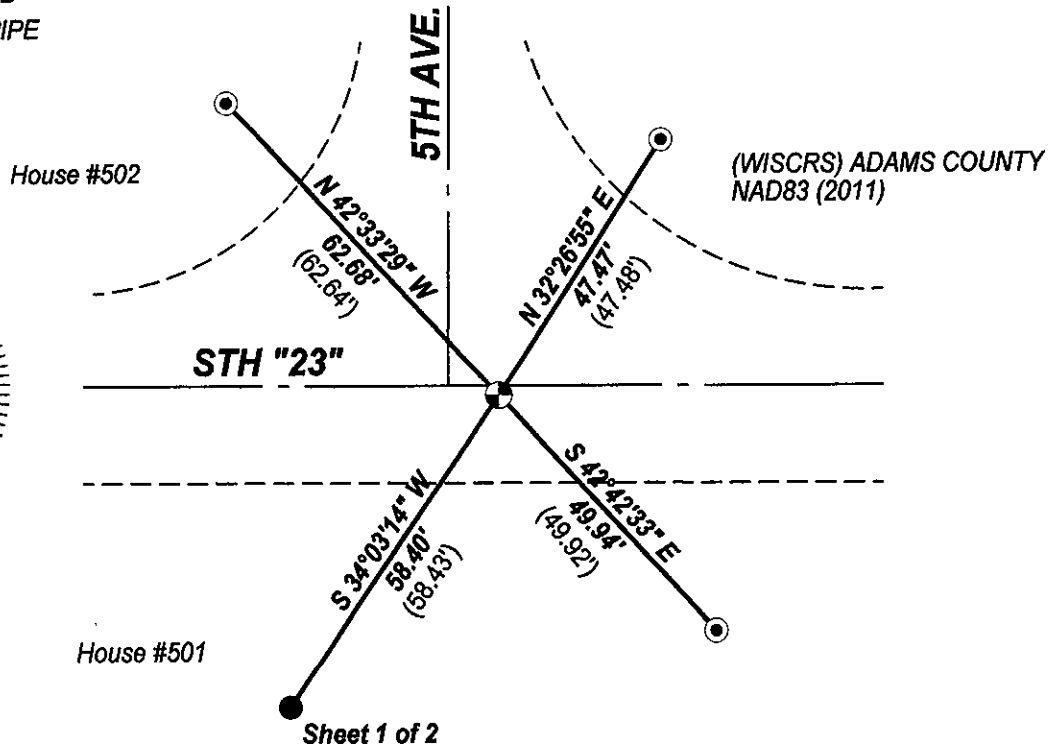
Scale: One Inch = Thirty Feet

**LEGEND:**

- = SET 3" BERNTSEN SURVEY MARKER SPIKE
- = FOUND 3/4" IRON ROD
- ⊙ = FOUND 1-1/4" IRON PIPE
- ( ) = Record Information

**NOTE:**

THE CORNER FALLS 2.5' SOUTH OF THE  
STH "23" CENTERLINE



1407116

**ADAMS COUNTY  
CERTIFIED U.S. PUBLIC LAND SURVEY  
MONUMENT RECORD**

( e ) Describe any material discrepancy between the location of the corner as restored or reestablished and the location of that corner as previously restored or reestablished by distance and direction. Show the discrepancy on the plan view drawing in ( d ). Show the distances between the corner as previously restored or reestablished and ( 1 ) the corner as restored or reestablished, and ( 2 ) to at least 4 of the witness monuments shown on the drawing in ( d ).

**None.**

( f ) Was the corner restored through acceptance of ( 1 ) an obliterated evidence location, or ( 2 ) a found perpetuated location ?

**This corner was accepted at its found location**

( g ) Was the corner reestablished through proportionate methods ? If so, show the method, including the directions and distances to other public land survey corners used as evidence or used for proportioning in determining the corner location.

**No.**

( h ) I, Anthony J. Alt

hereby certify that the corner location shown on this record was determined by me or under my direction and control and that this U.S. public land survey monument record is correct and complete to the best of my knowledge and belief.

Anthony J. Alt 6-25-22



32  
SECTION

14  
TOWN

07  
RANGE

# ADAMS COUNTY

COUNTY CORNER NO.: 116

ROMPORTOL ID: 41407322000

## PUBLIC LAND SURVEY MONUMENT RECORD

TYPE OF MONUMENT: HARRISON  
ADAMS COUNTY COORDINATES, NAD 83 (2007)

N. 103543.650

E. 567825.848

ELEVATION-      DATUM     

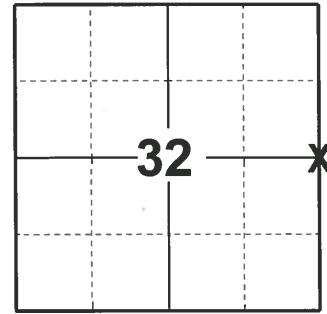
FIELD WORK DATE: 05/06/2020

### BASIS FOR MONUMENT LOCATION

1974 - PLS 922 BY ELECTRONIC MAGNETIC LOCATOR RECOVERED A RAILROAD SPIKE, UPON DIGGING OUT THIS SPIKE RECOVERED 1" STRAP IRON DOWN 12" BELOW ROAD SURFACE. ACCEPTED THIS AS THE BEST AVAILABLE EVIDENCE. FIT EDM TRAVERSE OF THIS SECTION GOOD.

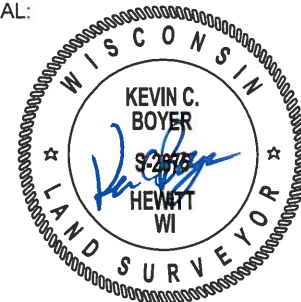
UNKNOWN - PLS UNKNOWN THIS CORNER LOCATION CONFLICTS WITH WISDOT 1949 RIGHT OF WAY PLAT WHICH SHOWS CORNER 10' NORTH OF STH 23 CENTERLINE. IN 1944 SURVEY NOTE RECORDS NO CORNER LOCATION, BUT DOES DEFINE OLD ROAD CENTERLINE AS BEING 10' NORTH OF THE PRESENT CENTERLINE.

2020 - PLS 2675 FOUND HARRISON 12"± BELOW THE ROAD SURFACE, 4 TIES, AND 1 WITNESS. THE MONUMENT AGREES WITH ALL TIES AND WITNESS. ACCEPTED THE HARRISON AS THE CORNER LOCATION. MEASURED TO A FOUND PROPERTY IRON AND THE EXISTING TIES AND WITNESS.



LOCATION  
(INDICATE CORNER BY "X")

SEAL:



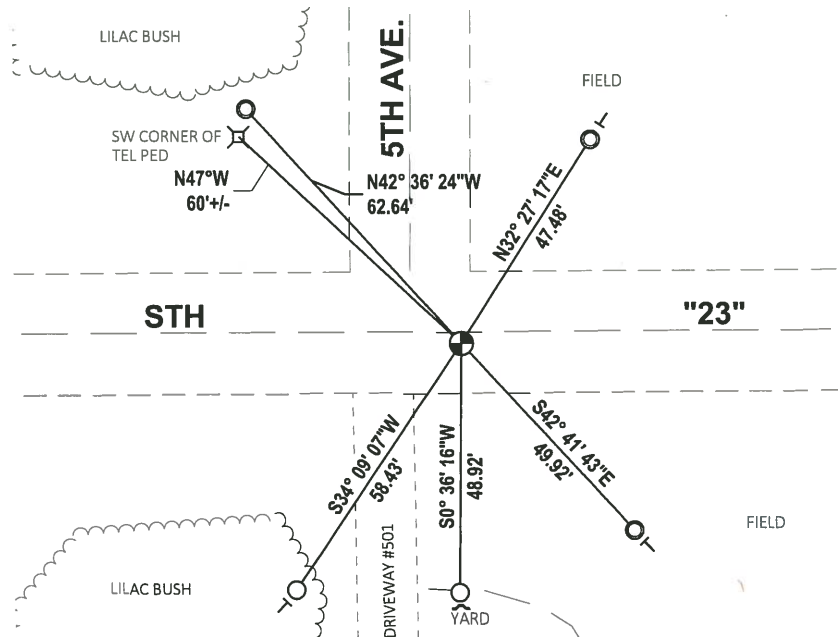
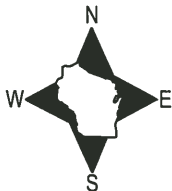
DATA SHOWN HERE ON THIS TIE SHEET IS CORRECT AND COMPLETE TO THE BEST OF MY KNOWLEDGE AND BELIEF.

PROFESSIONAL LAND SURVEYOR

DATE 5/28/2020

### - TIE SKETCH

NOTE: THE CORNER LANDS 2.5"± SOUTH OF STH "23" CENTERLINE.

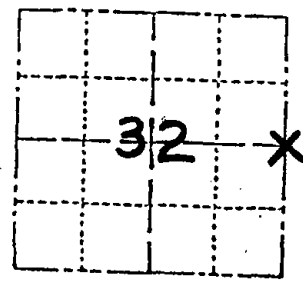


- FOUND 3/4" IRON ROD
- FOUND 1-1/4" O.D. IRON PIPE
- ⊕ FOUND HARRISON MONUMENT
- ┌ STEEL FENCE POST
- └ VINYL "T" POST

Survey Monument Record

TYPE OF MONUMENT: HARRISON  
STATE PLANE COORDINATES: N \_\_\_\_\_  
E \_\_\_\_\_  
ELEVATION - M.S.L. DATUM: \_\_\_\_\_  
THETA ANGLE: \_\_\_\_\_  
FIELD BOOK: \_\_\_\_\_ PAGE \_\_\_\_\_

CORNER NO. 526  
SECTION 32  
TOWN 14 N  
RANGE 7 E



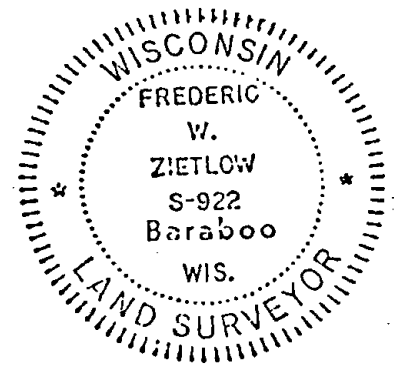
LOCATION  
(Indicated by 'X')

BASIS FOR MONUMENT LOCATION

(Use reverse side if necessary)

Show info such as: History of corner, with reference to Vol. and pg. dates, surveyor; exact description of monument replaced; if location computed, by taped or EDM traverse; landowner remarks, etc.

SEAL:



By electronic magnetic locator we recovered a railroad spike, upon digging out this spike we recovered 1" strap iron down 12" below road surface. Accepted this as best available evidence. Fit E.D.M. traverse of this section good.

*This corner location Conflicts with WI.DOT 1949 R/W Plat which shows Corner 10' North of 5TH 23 &. 1944 Survey note records No Corner location, but does define old road & as being 10' north of the present &.*

CERTIFIED CORRECT:

*Frederic W. Zietlow*

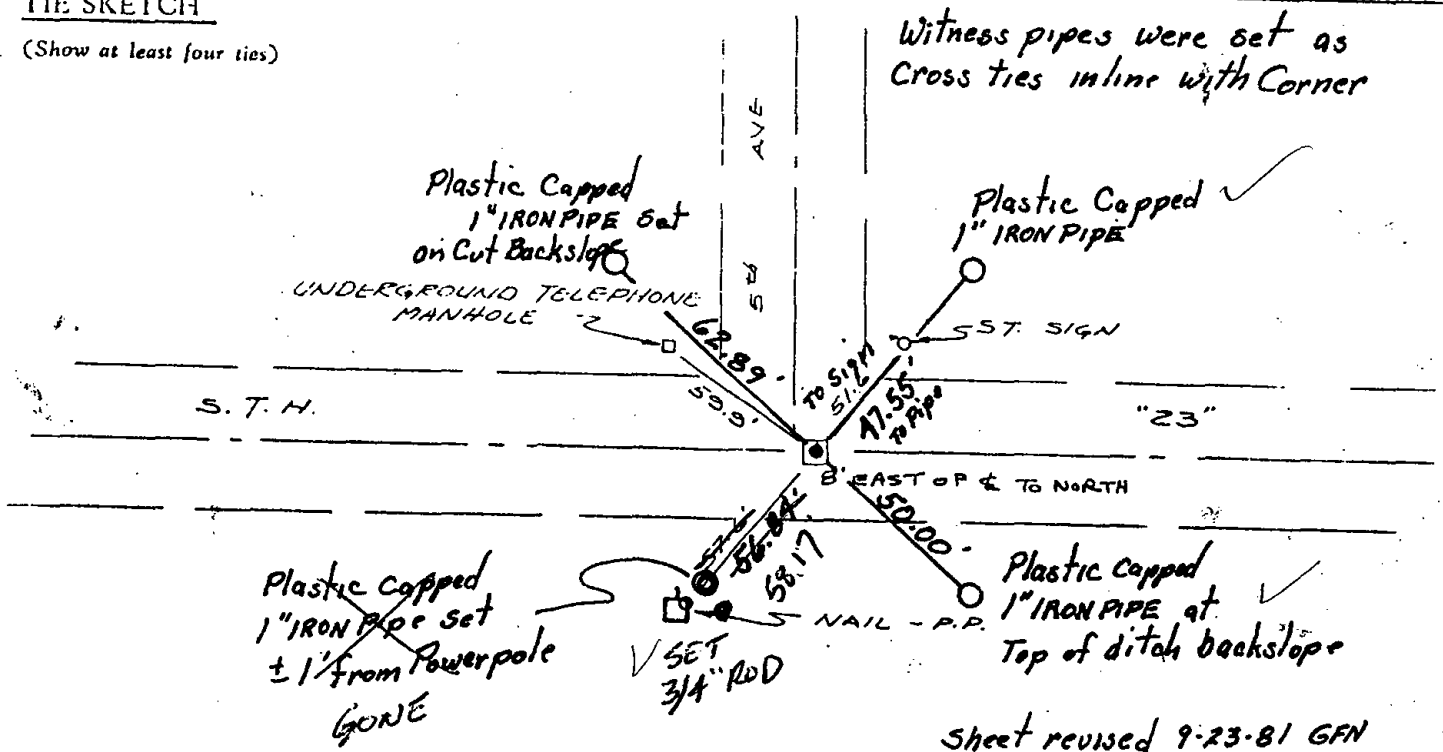
Registered Land Surveyor

DATE: 11-15-74

1 OCT 2001 - MADE NEW TIE - STAMP

TIE SKETCH

(Show at least four ties)



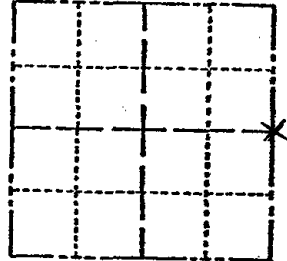
Sheet revised 9-23-81 GFN

**ADAMS COUNTY**

**Survey Monument Record**

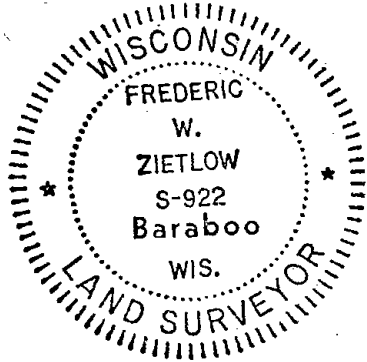
TYPE OF MONUMENT: HARRISON  
 STATE PLANE COORDINATES: N \_\_\_\_\_  
 E \_\_\_\_\_  
 ELEVATION — M.S.L. DATUM: \_\_\_\_\_  
 THETA ANGLE: \_\_\_\_\_  
 FIELD BOOK: \_\_\_\_\_ PAGE \_\_\_\_\_

SEE P. 8, T. 116  
 SHEET OF CORNER NO. 526  
 9-23-81 SECTION 32  
 TOWN 14 N  
 RANGE 7 E



LOCATION  
(Indicated by 'X')

SEAL:



CERTIFIED CORRECT:

*Frederic W. Zietlow*

Registered Land Surveyor

DATE: 11-15-74

**BASIS FOR MONUMENT LOCATION**

(Use reverse side if necessary)

Show info such as: History of corner, with reference to Vol. and pg. dates, surveyor; exact description of monument replaced; if location computed, by taped or EDM traverse; landowner remarks, etc.

By electronic magnetic locator we recovered a railroad spike, upon digging out this spike we recovered 1" strap iron down 12" below road surface. Accepted this as best available evidence. Fit E.D.M. traverse of this section good.

CORNER OK 10-22-73 RN-SS

**MAINTENANCE RECORD**

Date	Init.	Remarks
12-11-81	SKJW	TIES O.K.
2-19-86	GRSS	OK
12-19-90	KZJG	OK
12-1-95	SS	OK
12-19-01	JG-JS	OK SEE TIE SHEET PTO OCT 1, 01 S.M.S.
1-24-06	JG	OK
2-16-11	SS	OK

**TIE SKETCH**

(Show at least four ties)

