

31 SECTION 14 TOWN 07 RANGE

ADAMS COUNTY

COUNTY CORNER NO: 123

ROMPORTOL ID: 41407310000

PUBLIC LAND SURVEY MONUMENT RECORD

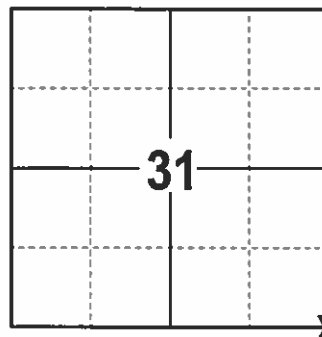
TYPE OF MONUMENT: 1" IRON ROD
ADAMS COUNTY COORDINATES, NAD 83 (2007)

N. 100930.891

E. 562472.550

ELEVATION- DATUM

FIELD WORK DATE: 2/22/2017



LOCATION
(INDICATE CORNER BY "X")

SEAL:



DATA SHOWN HERE ON THIS TIE SHEET IS CORRECT AND COMPLETE TO THE BEST OF MY KNOWLEDGE AND BELIEF.

PROFESSIONAL LAND SURVEYOR

DATE 3/15/17

BASIS FOR MONUMENT LOCATION

1975- PLS 922 RECOVERED A 22" POINTED STONE 19" BELOW SURFACE ON TOP OF A 8"x16"x30" BLUE STONE. BLUE STONE WAS SET BY COLUMBIA COUNTY SURVEYOR C.E. CORNING IN THE EARLY 1900'S. RECORD OF THIS ON FILE ON BLUE PRINT NO. 30 COLUMBIA COUNTY SURVEY RECORDS. ON 7/8/1975, WITH COOPERATION OF ADAMS AND COLUMBIA COUNTY SURVEYORS EXCAVATED AREA, AND FOUND CORNER 19" BELOW THE SURFACE.

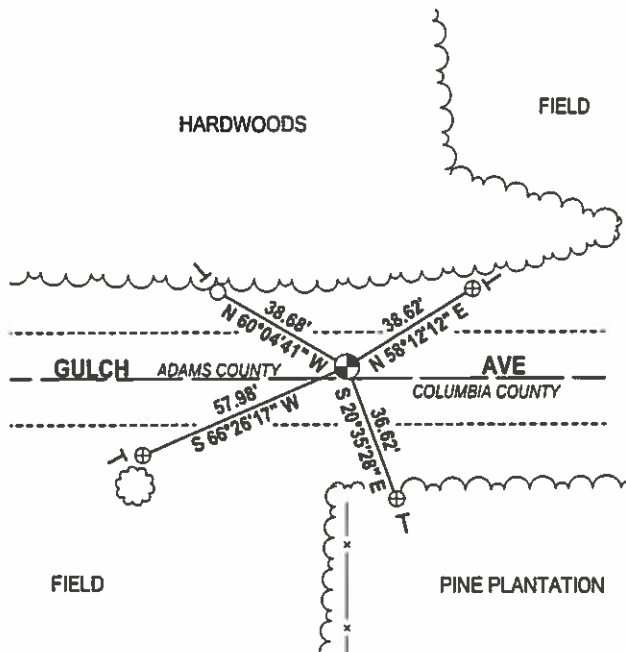
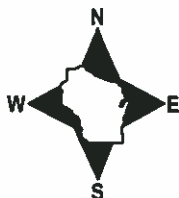
1975- ALUMINUM CAP SET IN 6" CONCRETE CYLINDER (IRON BAR IMBEDDED)

2001- PLS 1321 FOUND AN ALUMINUM MONUMENT IN CONCRETE, AND SET 4 TIES.

2017 - PLS 2994 FOUND A 1" IRON ROD 6 INCHES BELOW SURFACE AND 4 EXISTING TIES. 1" IRON ROD AGREES WITH TIES. ACCEPTED 1" IRON ROD AND REMEASURED TO THE EXISTING TIES.

- TIE SKETCH

NOTE: THE CORNER FALLS 3'± NORTH OF THE CENTERLINE OF GULCH AVE.



- 3/4" IRON ROD FOUND
- ⊕ 3/4" IRON ROD W/ALUMINUM CAP FOUND
- ⊙ 1" IRON ROD FOUND
- VINYL "T" POST

ADAMS COUNTY

Survey Monument Record

TYPE OF MONUMENT: 22" LONG POINTED STONE

STATE PLANE COORDINATES: N _____

E _____

ELEVATION — M.S.L. DATUM: _____

THETA ANGLE: _____

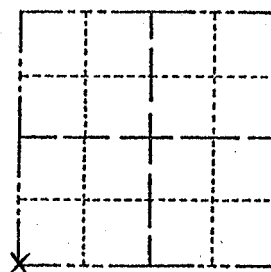
FIELD BOOK: _____ PAGE _____

CORNER NO. 720

SECTION 32

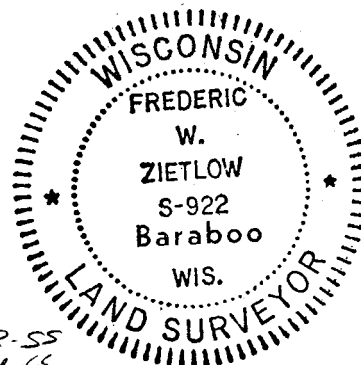
TOWN 14N

RANGE 7E



LOCATION
(Indicated by 'X')

SEAL:



BASIS FOR MONUMENT LOCATION

(Use reverse side if necessary)

Show info such as: History of corner, with reference to Vol. and pg, dates, surveyor; exact description of monument replaced; if location computed, by taped or EDM traverse; landowner remarks, etc.

Recovered 22" pointed stone on top of
 8" x 16" x 30" blue stone set by Columbia Co.
 Surveyor C.E. Corning in early 1900's. Record
 of this is on file on blue print No. 30, Columbia
 Co. Survey Records, on 7-8-75 with cooperation
 of Adams & Columbia Co. Surveyors. We excavated
 and found this corner. It is 19" below bituminous
 surfaced road

Found Bernstein (Columbia County) monument 10-9-76 GR-SS
 " " 2-12-86 GL-SS

" " ALL OK 3-13-91 JG

ADD 2 TIES 3-14-96 JG-SS

ALL OK 12-18-01 JG

2-16-11 SS 1 NEW TIE

CERTIFIED CORRECT:

Frederic W. Zietlow

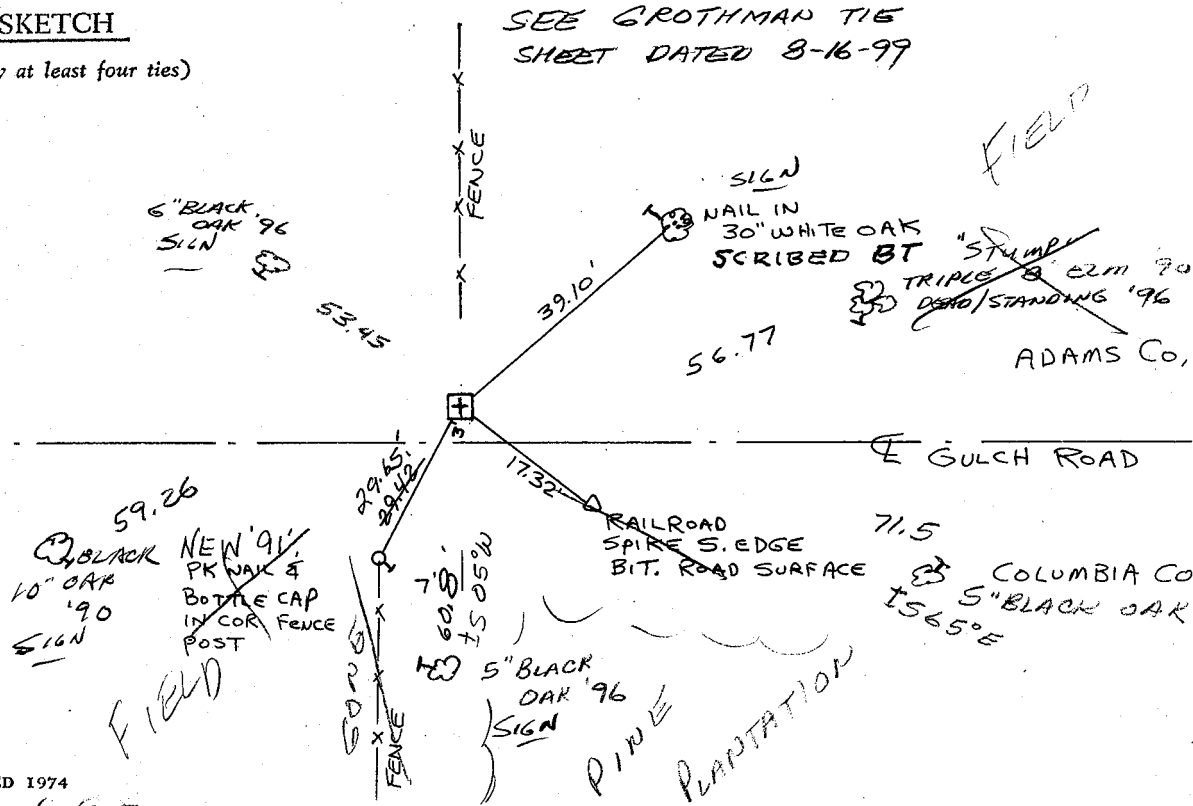
Registered Land Surveyor

DATE: JULY 31, 1975

TIE SKETCH

(Show at least four ties)

SEE GROTHMAN TIE SHEET DATED 8-16-99



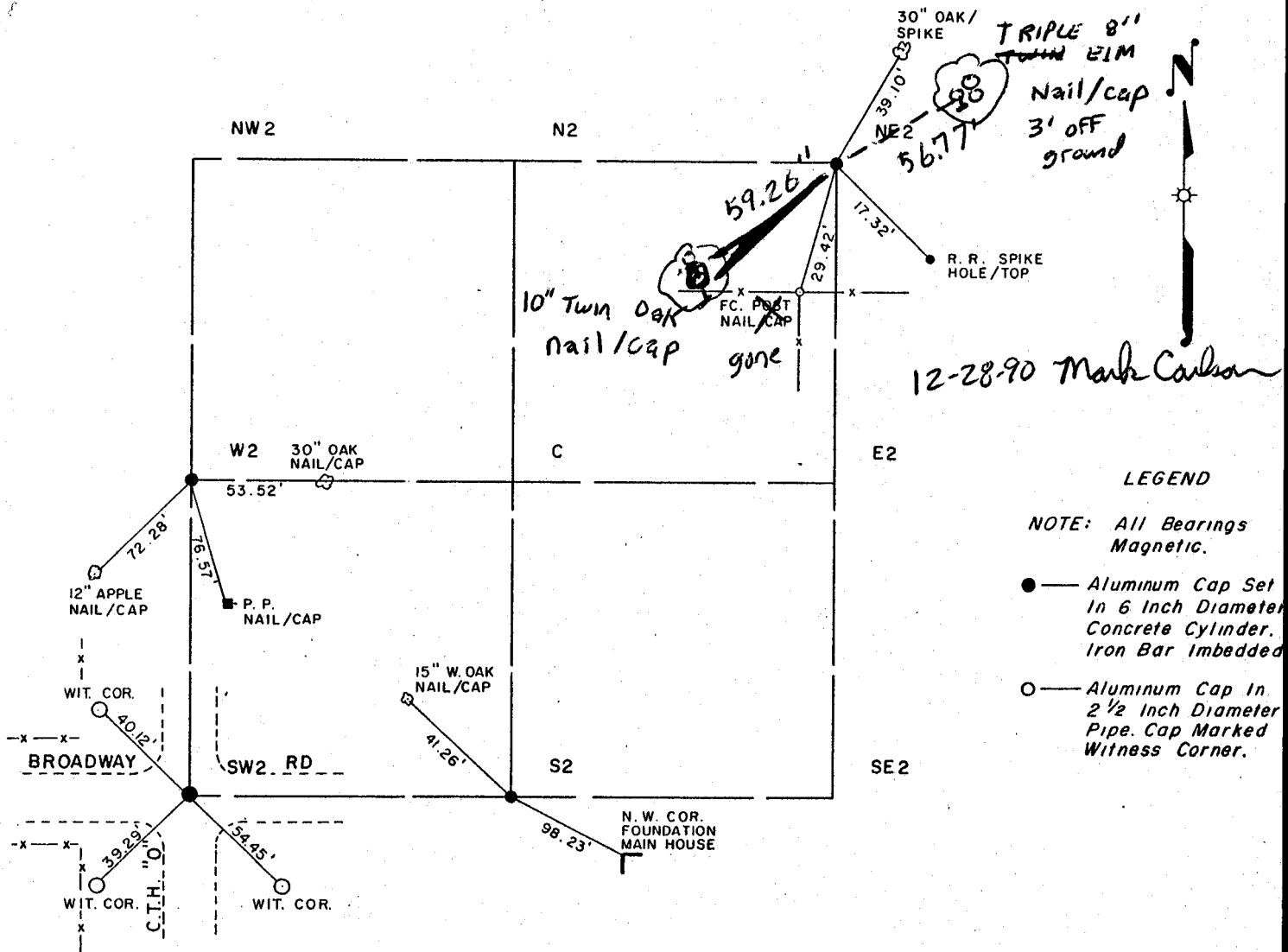
MAINTENANCE RECORD

Date	Init.	Remarks
12-14-81	SK-DW	CORNERS O.K.

Record of Section Corners

Columbia County, Wisconsin

Section 6, Town 13 North, Range 7 East of the Fourth Principal Meridian



LEGEND

NOTE: All Bearings Magnetic.

- — Aluminum Cap Set in 6 Inch Diameter Concrete Cylinder. Iron Bar Imbedded
- — Aluminum Cap in 2 1/2 Inch Diameter Pipe. Cap Marked Witness Corner.

Corner	Remarks & Notes
W ₂	Find 2" Gas Pipe per Blue Print Record No. 260. 12" Below Surface.
S ₂	Find 3/4" Gas Pipe per Blue Print Record No. 126. 6" Below Surface.
NE ₂	Find Pointed Stone & Blue Stone per Blue Print Record No. 30. 19" Below Surface.
SW ₂	Find Hard Head per Blue Print Record No. 260. 12" Below Surface.

STATE OF WISCONSIN)
 COUNTY OF COLUMBIA) ss

I hereby certify that the Section Corners; Witness Corners; Remarks and Notes; and ties hereon depicted are a correct and true representation of my efforts to retrace, find, establish, and perpetuate Section Corners as originally established by the United States Government Surveyors.

[Handwritten Signature]

5-26-77
 10-10-75
 10-7-75
 Date: 10-6-75

U. S. PUBLIC LAND SURVEY MONUMENT RECORD

COLUMBIA COUNTY

INSTRUCTIONS: This record shall show the location of the corner and shall include all of the following nine elements (a through i).

(a) Identify the corner by reference to the U. S. public land survey system.

○ - Corner monument restored.

CORNER MONUMENT RESTORED WAS THE
NE CORNER OF
 SECTION 6, T. 13 N., R. 7 E.,
 TOWN OF NEWPORT, COL. CO.

CORNER HISTORY:
 ORIGIN:
 BY SURVEYOR(S) _____
 DATE: _____

PERPETUATION: (PAGE, DATE & SURVEYOR)
 VOL. I SEE PREVIOUS TIE SHEETS

VOL. II _____
 B.P.R. _____

FIELD BOOK
RECENT SURVEYS: (REF., DATE & SURVEYOR)

TIE SHEET BY FREDERIC W. ZIETLOW, RLS. DATED 7-31-75

TIE SHEET BY LARRY R. BREWSTER, RLS. DATED 10-10-75

(b) Describe any record evidence, monument evidence, occupational evidence, testimonial evidence or any other material evidence you considered, and whether the monument was found or placed.

EVIDENCE FOUND:
 RECORD _____, MONUMENT , OCCUPATIONAL _____, TESTIMONIAL _____, OTHER _____.
 ORIGINAL CORNER MONUMENT LOCATION WAS N/A FOUND.
 DESCRIPTION: FOUND ALUM. MONUMENT IN CONCRETE. SET FOUR WITNESS MONUMENTS.

ALSO ESTABLISHED GPS COORDINATE VALUES. SEE COMPOSITE MAP IN LAND RECORDS OFFICE.

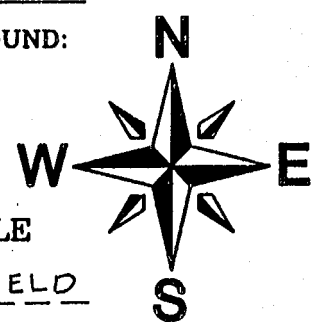
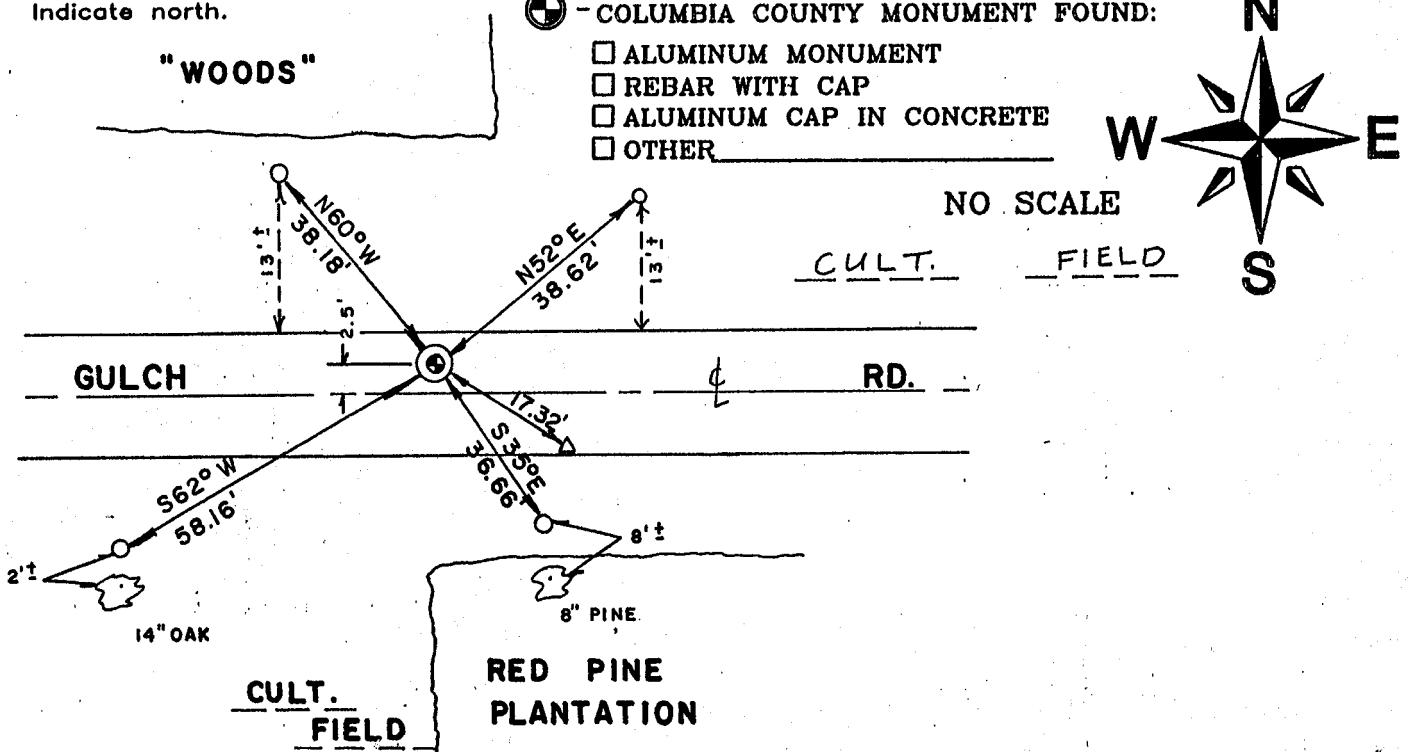
COLUMBIA COUNTY MONUMENT SET IN PLACE. (FOR ANY ADD'L INFO SEE BACK)

(c) In the plan view drawing below, provide reference ties to at least 4 witness monuments, or, if the location is within a municipality, to at least 2 witness monuments. (Witness monuments shall be made of concrete, natural stone, iron or other equally durable material.)

Describe witness monuments:

(d) Show a plan view drawing depicting the relevant monuments and reference ties which is sufficient in detail to enable accurate relocation of the corner monument if the corner monument is disturbed. Indicate north.

- COLUMBIA COUNTY MONUMENT SET - 1"x30" REBAR WITH ALUMINUM CAP
- 3/4"x30" REBAR W/ALUM. WITNESS CAP SET
- (OTHER) FND. RR. SPIKE
- COLUMBIA COUNTY MONUMENT FOUND:
 - ALUMINUM MONUMENT
 - REBAR WITH CAP
 - ALUMINUM CAP IN CONCRETE
 - OTHER _____



NO SCALE
CULT. FIELD

(e) Describe any material discrepancy between the location of the corner as restored or reestablished and the location of that corner as previously restored or reestablished by distance and direction. Show the discrepancy on the plan view drawing under (d), above. Show the distances between the corner as previously restored or reestablished and (1), the corner as restored or reestablished, and (2), to at least 2 of the witness monuments shown on the drawing in (d), above.

FOUND: _____
SET BY: _____

JOB REF: _____

BEARS _____ FROM CORNER MON. SET.

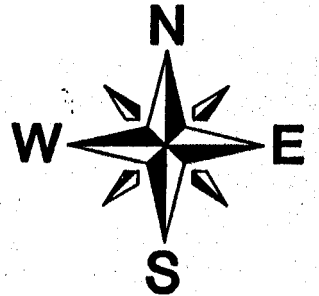
(f) Was the corner restored through acceptance of (1), an obliterated evidence location, or (2), a found perpetuated location?

THIS CORNER WAS RESTORED THROUGH FOUND PERPETUATED LOCATION.

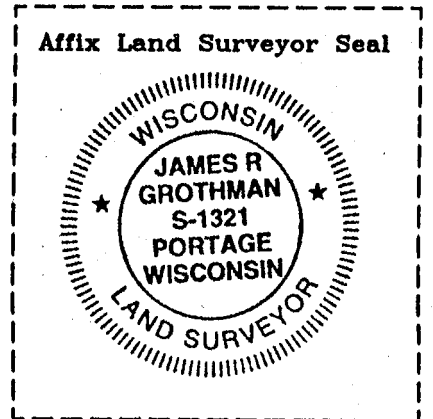
(g&h) Was the corner reestablished through lost corner proportionate methods? If so, show the method, including the directions and distances to other public land survey corners used as evidence or used for proportioning in determining the corner location?

BEARINGS REFERENCED TO _____
DISTANCES ARE: _____ GRID _____ GROUND
GRID FACTOR: _____

NO SCALE



picture taken: yes no



(i) I, JAMES R. GROTHMAN
(type or print name) certify that the corner location shown on this record was determined by me or under my direction and control and that this U.S. Public Land Survey Monument Record is correct and complete to the best of my knowledge and belief.

James R. Grothman _____
Signature Date 2/05/01