

32
SECTION

14
TOWN

07
RANGE

ADAMS COUNTY

COUNTY CORNER NO: 125

ROMPORTOL ID: 41407320000

PUBLIC LAND SURVEY MONUMENT RECORD

TYPE OF MONUMENT: HARRISON
ADAMS COUNTY COORDINATES, NAD 83 (2007)

N. 100916.306

E. 567798.752

ELEVATION- --- DATUM ---

FIELD WORK DATE: 2/16/2017



LOCATION
(INDICATE CORNER BY "X")

SEAL:



DATA SHOWN HERE ON THIS TIE SHEET IS CORRECT AND COMPLETE TO THE BEST OF MY KNOWLEDGE AND BELIEF.

PROFESSIONAL LAND SURVEYOR

DATE 3/15/17

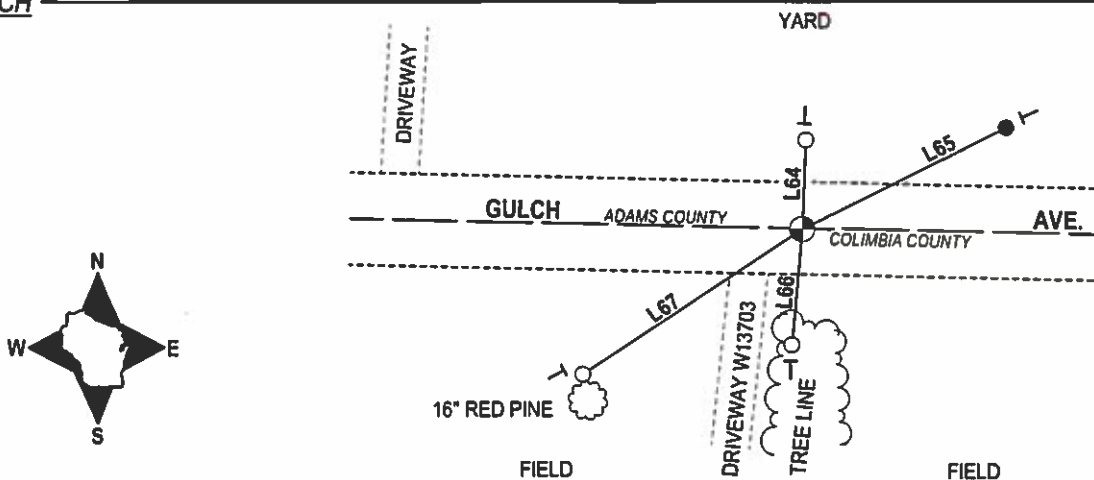
BASIS FOR MONUMENT LOCATION

1975- PLS 922 SET A HARRISON. CHECKED ADAMS AND COLUMBIA COUNTY SURVEY RECORDS ON OCTOBER 3, 1893 COLUMBIA COUNTY SURVEYOR NOTED HE RECOVERED ORIGINAL STAKE IN CENTERLINE OF HIGHWAY OFF FENCE FROM SOUTH, BUT DIDN'T MARK CORNER WITH ANYTHING MORE DURABLE SEE VOL. 2 PG. 40. ON 7/8/1975 WITH COOPERATION OF ADAMS AND COLUMBIA COUNTY SURVEYORS CORNER WAS EXCAVATED AND NO REMAINS OF ORIGINAL CORNER WAS FOUND. SET MONUMENT ON CENTERLINE OF ROAD AND FENCE LINE FROM THE SOUTH.

2001- PLS 1321 FOUND A HARRISON AND SET 4 TIES.

2017 - PLS 2994 FOUND A HARRISON 6 INCHES BELOW SURFACE AND 3 EXISTING TIES. HARRISON AGREES WITH TIES. ACCEPTED HARRISON, SET 1 ADDITIONAL TIE AND REMEASURED TO THE EXISTING TIES.

- TIE SKETCH



- 3/4" X 18" IRON REBAR SET, 1.50#/FT
- 3/4" IRON ROD W/ALUMINUM CAP FOUND
- ⊕ COLUMBIA COUNTY ALUMINUM CAP IN CONCRETE
- └ VINYL "T" POST

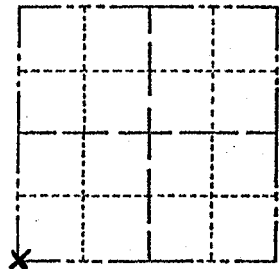
LINE	BEARING	DISTANCE
L64	N 02°12'05" E	23.20'
L65	N 63°35'35" E	59.45'
L66	S 05°12'57" W	30.16'
L67	S 56°34'08" W	68.56'

ADAMS COUNTY

Survey Monument Record

CORNER NO. 769
SECTION 33
TOWN 14N
RANGE 7E

TYPE OF MONUMENT: 30" HARRISON
STATE PLANE COORDINATES: N _____
E _____
ELEVATION - M.S.L. DATUM: _____
THETA ANGLE: _____
FIELD BOOK: _____ PAGE _____

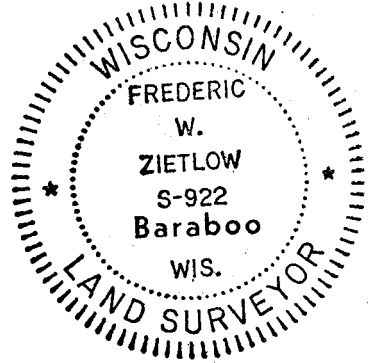


BASIS FOR MONUMENT LOCATION

(Use reverse side if necessary)

Show info such as: History of corner, with reference to Vol. and pg, dates, surveyor; exact description of monument replaced; if location computed, by taped or EDM traverse; landowner remarks, etc.

SEAL: LOCATION (Indicated by 'X')



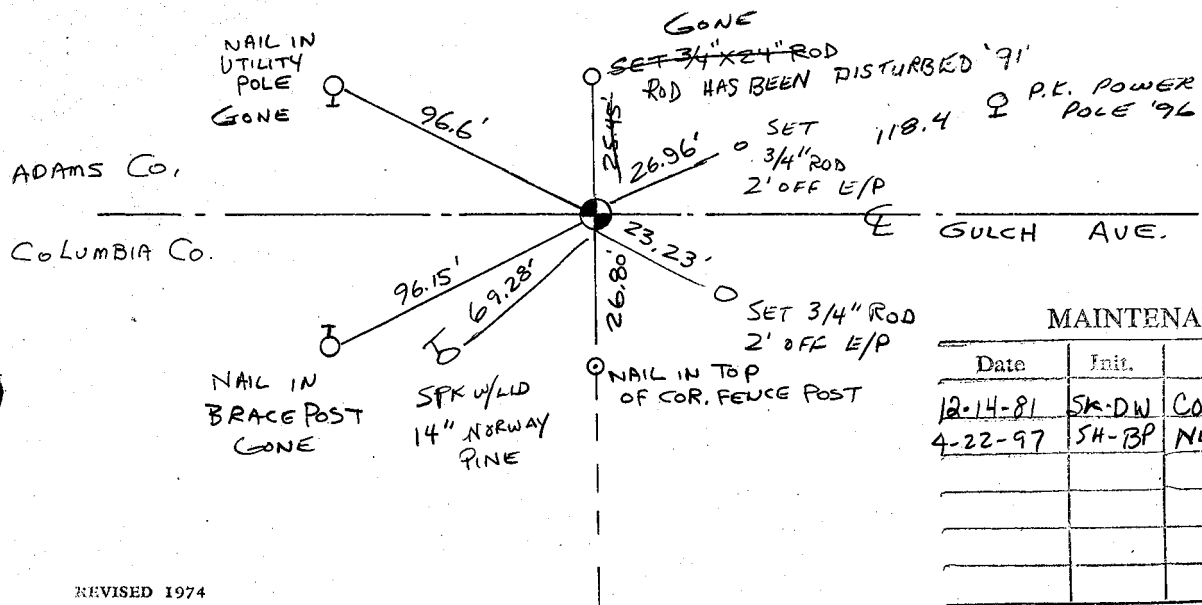
CHECKED ADAMS & COLUMBIA Co. SURVEY RECORDS
ON OCT. 3, 1893 COLUMBIA Co SURVEYOR NOTED HE
RECOVERED ORIG. STAKE IN E HWY OFF FENCE FROM
SOUTH BUT DID NOT MARK CORNER WITH ANYTHING
MORE DURABLE SEE VOL 2 PAGE 40.
ON 7-8-75 WITH THE COOPERATION OF ADAMS &
COLUMBIA Co. SURVEYORS WE EXCAVATED AND COULD
NOT FIND ANY REMAINS OF ORIGINAL CORNER.
MONUMENTED E OF ROAD OFF FENCE LINE FROM
SOUTH.

CERTIFIED CORRECT:
Frederic W. Zietlow
Registered Land Surveyor
DATE: JULY 31, 1975

CORNER O.K. 10-9-76 GR-SS
" " 2-12-86 BR-SS
1-GONE CORNER OK 3-13-91 JG
1 NEW TIE 3-14-96 JG-SS
ALL OK 12-18-01 JG
OK, 1-23-06-JG

TIE SKETCH 2-16-11 OK SS
(Show at least four ties)

SEE J. GROTHMAN
TIE SHEET DATED 3-29-00



MAINTENANCE RECORD

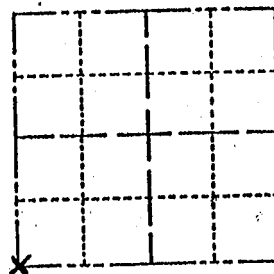
Date	Init.	Remarks
12-14-81	SK-DW	CORNERS O.K
4-22-97	SH-BP	NEW TIES

ADAMS COUNTY

Survey Monument Record

TYPE OF MONUMENT: 30" HARRISON
 STATE PLANE COORDINATES: N _____
 E _____
 ELEVATION — M.S.L. DATUM: _____
 THETA ANGLE: _____
 FIELD BOOK: _____ PAGE _____

CORNER NO. 167
 SECTION 33
 TOWN 14N
 RANGE 7E



LOCATION
(Indicated by 'X')

BASIS FOR MONUMENT LOCATION

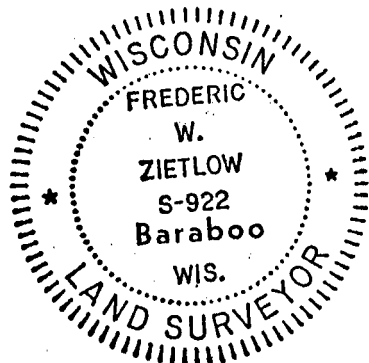
(Use reverse side if necessary)

Show info such as: History of corner, with reference to Vol. and pg, dates, surveyor; exact description of monument replaced; if location computed, by taped or EDM traverse; landowner remarks, etc.

CHECKED ADAMS & COLUMBIA Co. SURVEY RECORDS
 & ON OCT. 3, 1893 COLUMBIA Co SURVEYOR NOTED HE
 RECOVERED ORIG. STAKE IN & HWY OFF FENCE FROM
 SOUTH BUT DID NOT MARK CORNER WITH ANY THING
 MORE DURABLE SEE VOL 2 PAGE 40.
 ON 7-8-75 WITH THE COOPERATION OF ADAMS &
 COLUMBIA Co. SURVEYORS WE EXCAVATED AND COULD
 NOT FIND ANY REMAINS OF ORIGINAL CORNER.
 MONUMENTED & OF ROAD OFF FENCE LINE FROM
 SOUTH.

CORNER O.K. 10-9-76 GR-SS
 " " 2-12-86 GR-SS

SEAL:



CERTIFIED CORRECT:

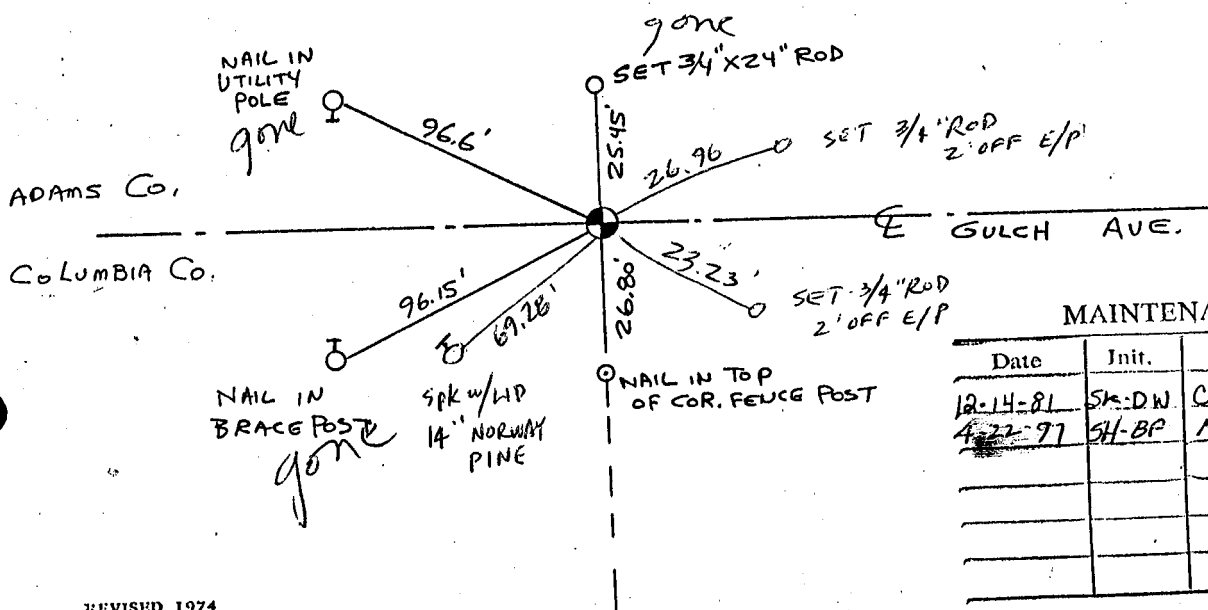
Frederic W. Zietlow

Registered Land Surveyor

DATE: JULY 31, 1975

TIE SKETCH

(Show at least four ties)



MAINTENANCE RECORD

Date	Init.	Remarks
12-14-81	SK-DW	CORNERS O.K
4-22-97	SH-BP	NEW TIES

U. S. PUBLIC LAND SURVEY MONUMENT RECORD

COLUMBIA COUNTY

INSTRUCTIONS: This record shall show the location of the corner and shall include all of the following nine elements (a through i).

(a) Identify the corner by reference to the U. S. public land survey system.

○ - Corner monument restored.

CORNER MONUMENT RESTORED WAS THE

NE CORNER OF
SECTION 5, T. 13 N., R. 7 E.,
TOWN OF NEWPORT, COL. CO.

CORNER HISTORY:

ORIGIN:

BY SURVEYOR(S) _____

DATE: _____

PERPETUATION: (PAGE, DATE & SURVEYOR)

VOL. I SEE PREVIOUS TIE SHEET

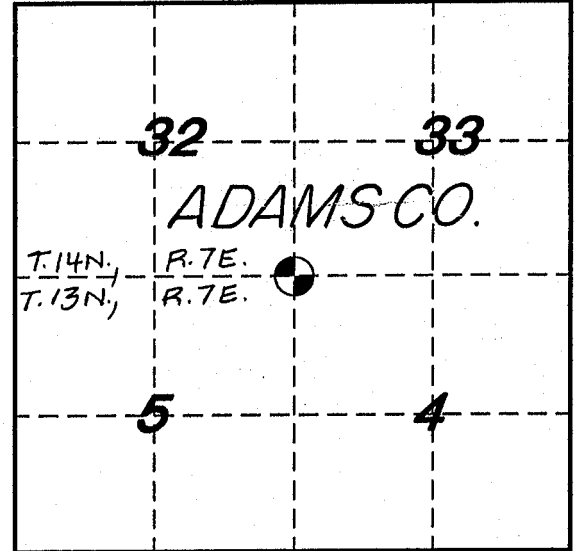
VOL. II _____

B.P.R. _____

FIELD BOOK _____

RECENT SURVEYS: (REF., DATE & SURVEYOR)

TIE SHEET BY FREDERIC W. ZIETLOW, RLS. DATED 7-31-75



(b) Describe any record evidence, monument evidence, occupational evidence, testimonial evidence or any other material evidence you considered, and whether the monument was found or placed.

EVIDENCE FOUND:

RECORD _____, **MONUMENT** , **OCCUPATIONAL** _____, **TESTIMONIAL** _____, **OTHER** _____.

ORIGINAL CORNER MONUMENT LOCATION WAS N/A **FOUND**

DESCRIPTION: FOUND HARRISON MONUMENT. SET FOUR WITNESS MONUMENTS.

ALSO ESTABLISHED GPS COORDINATE VALUES, SEE COMPOSITE MAP IN LAND RECORDS OFFICE.

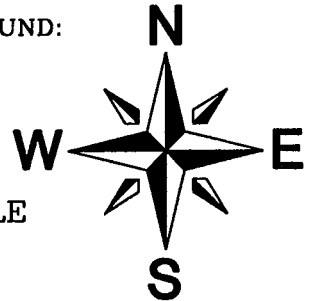
COLUMBIA COUNTY MONUMENT SET IN PLACE. (FOR ANY ADD'L INFO SEE BACK)

(c) In the plan view drawing below, provide reference ties to at least 4 witness monuments, or, if the location is within a municipality, to at least 2 witness monuments. (Witness monuments shall be made of concrete, natural stone, iron or other equally durable material.)

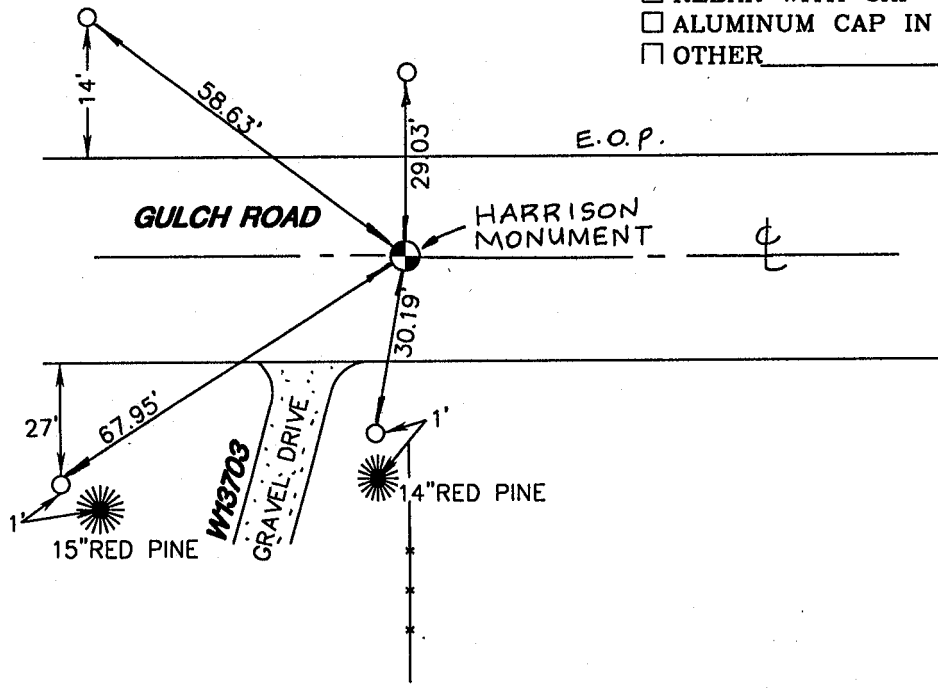
Describe witness monuments:

(d) Show a plan view drawing depicting the relevant monuments and reference ties which is sufficient in detail to enable accurate relocation of the corner monument if the corner monument is disturbed. Indicate north.

- COLUMBIA COUNTY MONUMENT SET - 1"x30" REBAR WITH ALUMINUM CAP
- 3/4"x30" REBAR W/ALUM. WITNESS CAP SET
- (OTHER) FOUND ALUM. WITNESS MONUMENT
- COLUMBIA COUNTY MONUMENT FOUND:
 - ALUMINUM MONUMENT
 - REBAR WITH CAP
 - ALUMINUM CAP IN CONCRETE
 - OTHER _____



NO SCALE



N

E

DRAFTED BY R.D.P. DATE 3/29/00 CORNER REF. A-9

0049

(e) Describe any material discrepancy between the location of the corner as restored or reestablished and the location of that corner as previously restored or reestablished by distance and direction. Show the discrepancy on the plan view drawing under (d), above. Show the distances between the corner as previously restored or reestablished and (1), the corner as restored or reestablished, and (2), to at least 2 of the witness monuments shown on the drawing in (d), above.

FOUND: _____
SET BY: _____
JOB REF: _____

BEARS _____ FROM CORNER MON. SET.

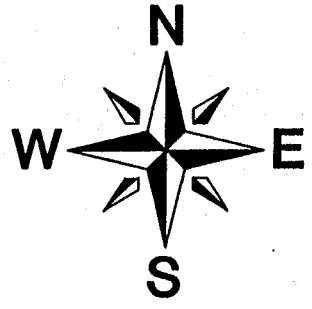
(f) Was the corner restored through acceptance of (1), an obliterated evidence location, or (2), a found perpetuated location?

THIS CORNER WAS RESTORED THROUGH FOUND PERPETUATED LOCATION.

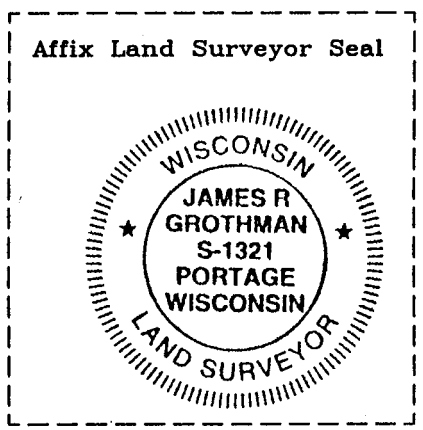
(g&h) Was the corner reestablished through lost corner proportionate methods? If so, show the method, including the directions and distances to other public land survey corners used as evidence or used for proportioning in determining the corner location?

BEARINGS REFERENCED TO _____
DISTANCES ARE: _____ GRID _____ GROUND
GRID FACTOR: _____

NO SCALE



picture taken: yes no



(i) I, James R. Grothman
(type or print name) certify that the corner location shown on this record was determined by me or under my direction and control and that this U.S. Public Land Survey Monument Record is correct and complete to the best of my knowledge and belief.
James R. Grothman 01/05/01
Signature Date