

33 SECTION 14 TOWN 07 RANGE

ADAMS COUNTY

COUNTY CORNER NO: 126
ROMPORTOL ID: 41407330020

PUBLIC LAND SURVEY MONUMENT RECORD

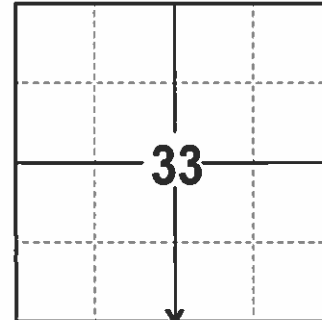
TYPE OF MONUMENT: COLUMBIA COUNTY ALUMINUM CAP IN CONCRETE
ADAMS COUNTY COORDINATES, NAD 83 (2007)

N. 100902.926

E. 570448.270

ELEVATION- DATUM

FIELD WORK DATE: 2/16/2017



LOCATION
(INDICATE CORNER BY "X")

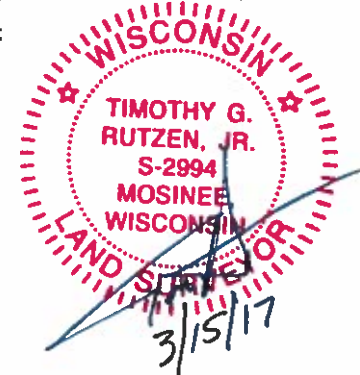
BASIS FOR MONUMENT LOCATION

1976- PLS 922 SET A 6" ALUMINUM CAP IN CONCRETE. THIS CORNER WAS SET BY LARRY BREWSTER ON 9/15/1976. I MET WITH BREWSTER AND SAW REMNANTS OF C.E. CORNING'S WOOD STAKE AT THIS LOCATION. REMNANTS HAD 3 STONES AROUND IT. SEE COLUMBIA COUNTY SURVEY RECORDS BLUE PRINT NO. 1 MAY 12, 1902.

2001- PLS 1321 FOUND A 6" ALUMINUM CAP IN CONCRETE AND 1 1/4" OD IRON PIPE. SET 3 ADDITIONAL TIES.

2017 - PLS 2994 FOUND A 6" ALUMINUM CAP IN CONCRETE AND 4 EXISTING TIES. 6" ALUMINUM CAP IN CONCRETE AGREES WITH 4 TIES, ACCEPTED CORNER AND REMEASURED TO THE EXISTING TIES.

SEAL:



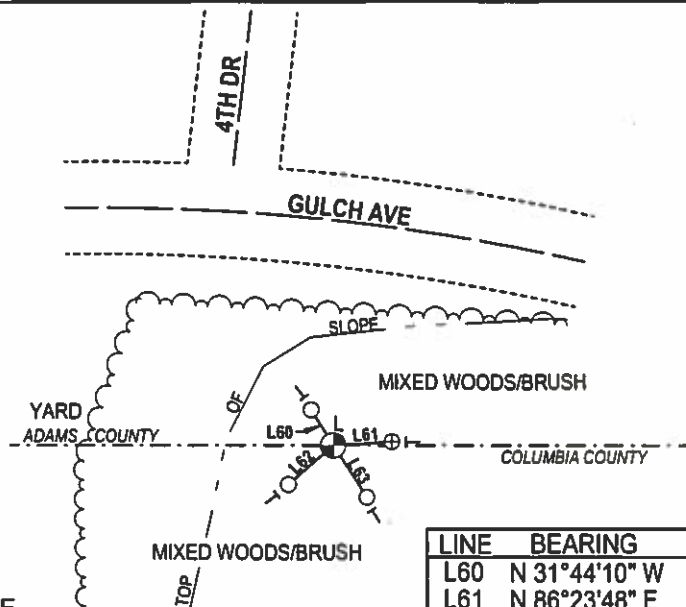
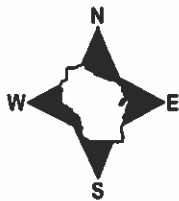
DATA SHOWN HERE ON THIS TIE SHEET IS CORRECT AND COMPLETE TO THE BEST OF MY KNOWLEDGE AND BELIEF.

PROFESSIONAL LAND SURVEYOR

DATE _____

TIE SKETCH

NOTE: THE CORNER FALLS 60'± SOUTH OF THE CENTERLINE OF GULCH AVE.



- ⊕ 1 1/4" OD IRON PIPE FOUND
- 3/4" IRON ROD W/ALUMINUM CAP FOUND
- ⊕ COLUMBIA COUNTY ALUMINUM CAP IN CONCRETE
- VINYL "T" POST
- ▭ FIBERGLASS "T" POST

LINE	BEARING	DISTANCE
L60	N 31°44'10" W	10.83'
L61	N 86°23'48" E	15.34'
L62	S 48°50'45" W	15.43'
L63	S 32°56'16" E	16.04'

ADAMS COUNTY

Survey Monument Record

TYPE OF MONUMENT: 6" ALUMINUM CAP SET IN CONCRETE

STATE PLANE COORDINATES: N _____

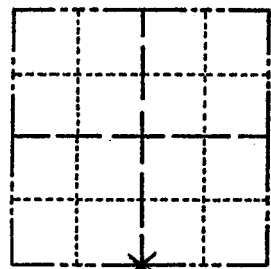
E _____

ELEVATION — M.S.L. DATUM: _____

THETA ANGLE: _____

FIELD BOOK: _____ PAGE _____

CORNER NO. 126
 SECTION 33
 TOWN 14N
 RANGE 7E



LOCATION
(Indicated by 'X')

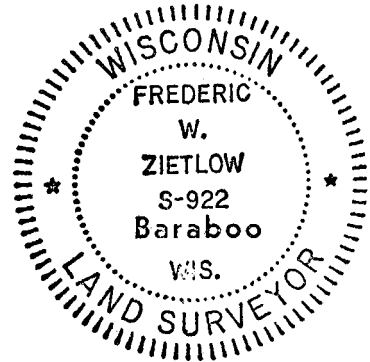
BASIS FOR MONUMENT LOCATION

(Use reverse side if necessary)

Show info such as: History of corner, with reference to Vol. and pg. dates, surveyor; exact description of monument replaced; if location computed, by taped or EDM traverse; landowner remarks, etc.

THIS CORNER WAS SET BY LARRY BREWSTER. ON 9-15-76 I MET WITH BREWSTER AND SAW OLD WOOD STAKE SET BY C.E. CORNING AT THIS LOCATION. STAKE HAD 3 STONES AROUND SAME. SEE COLUMBIA COUNTY SURVEY RECORDS BLUE PRINT NO. 1 MAY 12, 1902

SEAL:



CERTIFIED CORRECT:

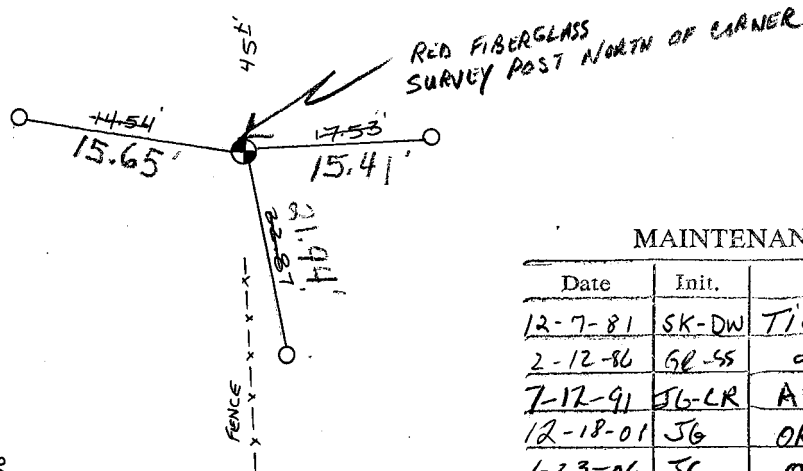
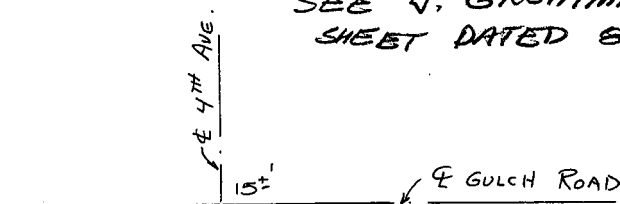
Frederic W. Zietlow
 Registered Land Surveyor

DATE: 12-29-76

TIE SKETCH

(Show at least four ties)

SEE J. GROTHMAN TIE SHEET DATED 8-16-99



MAINTENANCE RECORD

Date	Init.	Remarks
12-7-81	SK-DW	TIES O.K.
2-12-86	GL-SS	OK
7-17-91	JG-LR	ALL OK
12-18-01	JG	OK
1-23-06	JG	OK
2-16-11	SS	OK

FOUND 1" IRON PIPES
 O = ALUMINUM CAP
 W-2 1/2" PIPE
 MARKED WITNESS CORNER

U. S. PUBLIC LAND SURVEY MONUMENT RECORD

COLUMBIA COUNTY

INSTRUCTIONS:

This record shall show the location of the corner and shall include all of the following nine elements (a through i).

(a) Identify the corner by reference to the U. S. public land survey system.

○ - Corner monument restored.

CORNER MONUMENT RESTORED WAS THE
 N1/4 CORNER OF
 SECTION 4 , T. 13 N., R. 7 E.,
 TOWN OF NEWPORT , COL. CO.

CORNER HISTORY:
 ORIGIN:
 BY SURVEYOR(S) _____
 DATE: _____

PERPETUATION: (PAGE, DATE & SURVEYOR)
 VOL. I SEE PREVIOUS TIE SHEET

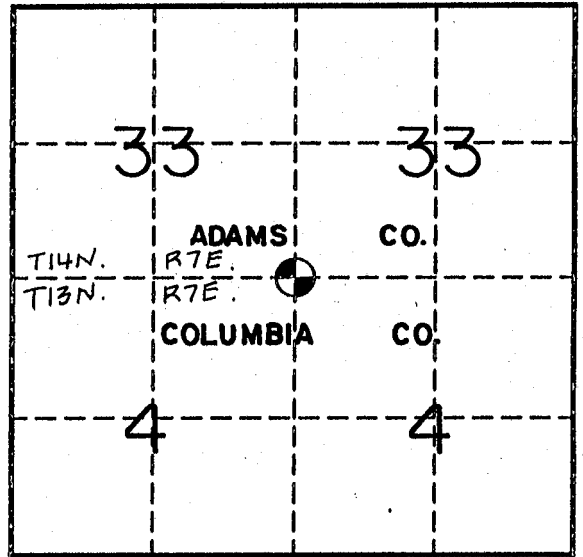
VOL. II _____

B.P.R. _____

FIELD BOOK _____

RECENT SURVEYS: (REF., DATE & SURVEYOR)

 TIE SHEET BY LARRY R. BREWSTER, RLS. DATED 10-4-79



(b) Describe any record evidence, monument evidence, occupational evidence, testimonial evidence or any other material evidence you considered, and whether the monument was found or placed.

EVIDENCE FOUND:

RECORD _____, MONUMENT , OCCUPATIONAL _____, TESTIMONIAL _____, OTHER _____.

ORIGINAL CORNER MONUMENT LOCATION WAS N/A FOUND.

DESCRIPTION: FOUND ALUM. MONUMENT IN CONCRETE CYLINDER AND EXISTING 1" IRON PIPE. SET THREE ADDITIONAL WITNESS MONUMENTS.

 ALSO ESTABLISHED GPS COORDINATE VALUES. SEE COMPOSITE MAP IN LAND RECORDS OFFICE.

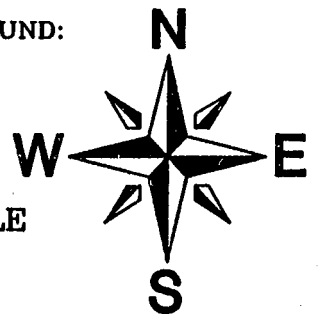
COLUMBIA COUNTY MONUMENT SET IN PLACE. (FOR ANY ADD'L INFO SEE BACK)

(c) In the plan view drawing below, provide reference ties to at least 4 witness monuments, or, if the location is within a municipality, to at least 2 witness monuments. (Witness monuments shall be made of concrete, natural stone, iron or other equally durable material.)

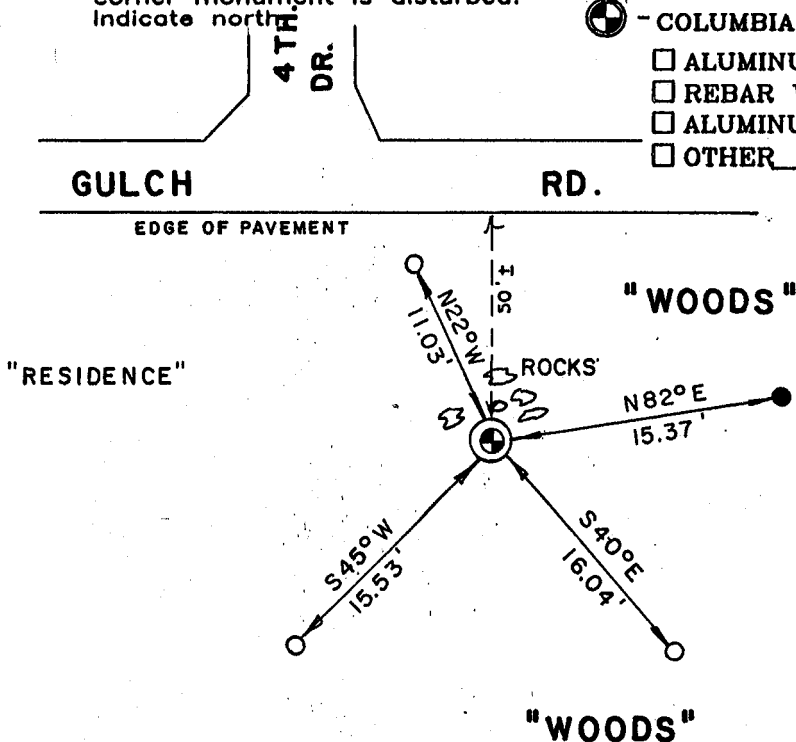
Describe witness monuments:

(d) Show a plan view drawing depicting the relevant monuments and reference ties which is sufficient in detail to enable accurate relocation of the corner monument if the corner monument is disturbed. Indicate north.

- COLUMBIA COUNTY MONUMENT SET - 1"x30" REBAR WITH ALUMINUM CAP
- 3/4"x30" REBAR W/ALUM. WITNESS CAP SET
- (OTHER) FND. 1" IRON PIPE
- COLUMBIA COUNTY MONUMENT FOUND:
 - ALUMINUM MONUMENT
 - REBAR WITH CAP
 - ALUMINUM CAP IN CONCRETE
 - OTHER _____



NO SCALE



N _____

E _____

DRAFTED BY C.A.E. DATE 8/16/99 CORNER REF. A-11

0053

(e) Describe any material discrepancy between the location of the corner as restored or reestablished and the location of that corner as previously restored or reestablished by distance and direction. Show the discrepancy on the plan view drawing under (d), above. Show the distances between the corner as previously restored or reestablished and (1), the corner as restored or reestablished, and (2), to at least 2 of the witness monuments shown on the drawing in (d), above.

FOUND: _____

SET BY: _____

JOB REF: _____

BEARS _____, _____ FROM CORNER MON. SET.

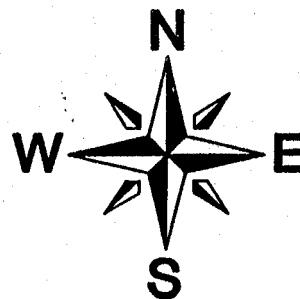
(f) Was the corner restored through acceptance of (1), an obliterated evidence location, or (2), a found perpetuated location?

THIS CORNER WAS RESTORED THROUGH FOUND PERPETUATED LOCATION.

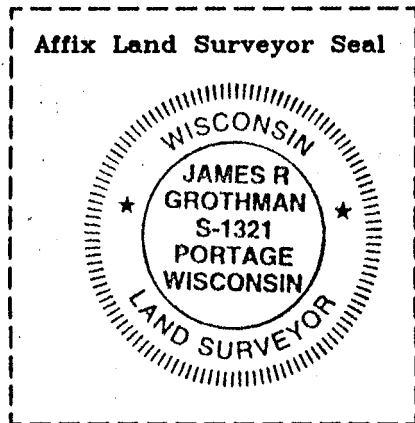
(g&h) Was the corner reestablished through lost corner proportionate methods? If so, show the method, including the directions and distances to other public land survey corners used as evidence or used for proportioning in determining the corner location?

BEARINGS REFERENCED TO _____
DISTANCES ARE: _____ GRID _____ GROUND
GRID FACTOR: _____

NO SCALE



picture taken: yes no



(i) I, JAMES R. GROTHMAN
(type or print name) certify that the corner location shown on this record was determined by me or under my direction and control and that this U.S. Public Land Survey Monument Record is correct and complete to the best of my knowledge and belief.

James R. Grothman _____
Signature Date