

PUBLIC LAND SURVEY MONUMENT RECORD

TYPE OF MONUMENT: 1" IRON ROD W/COLUMBIA COUNTY ALUMINUM CAP
 ADAMS COUNTY COORDINATES, NAD 83 (2007)

N. 100774.458

E. 578406.076

ELEVATION- DATUM

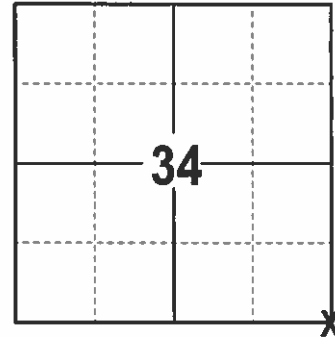
FIELD WORK DATE: 2/15/2017

BASIS FOR MONUMENT LOCATION

1977- PLS 1191 SET A HARRISON. RESEARCHED ADAMS AND COLUMBIA COUNTY SURVEY NOTES. FOUND ADAMS COUNTY SURVEY OF RECORD BY A.J. BARRATT IN VOL. 2 PG. 184 IN 1896. B.T. HAS BEEN LOST AND ALL EVIDENCE OF SAME. USED 1 FOOT DIAMETER FENCE POST FOR CORNER TRAVERSED TO S1/4 TO VERIFY 2648.58'(RECORDED) 2647.02' (MEASURED), TRAVERSED NORTH TO W1/4 2646.68' (RECORDED) 2641.70' (MEASURED). ACCEPTED FENCE CORNER AS SECTION CORNER. EDM TRAVERSE, PROJECT 6585 FILE 22-73-12, MID STATE ASSOCIATES.

2001- PLS 1321 FOUND BASE OF BROKEN HARRISON AND ONE WITNESS TREE WITH NAIL. REPLACED CORNER WITH 1"X30" IRON ROD WITH ALUMINUM CAP AND SET 4 TIES.

2017 - PLS 2994 FOUND A 1"X30" IRON ROD WITH ALUMINUM CAP 12 INCHES BELOW THE SURFACE, EXTENSIVE SEARCH FOR TIES, NONE FOUND. ACCEPTED 1" IRON ROD AND SET 4 NEW TIES.



LOCATION
(INDICATE CORNER BY "X")

SEAL:

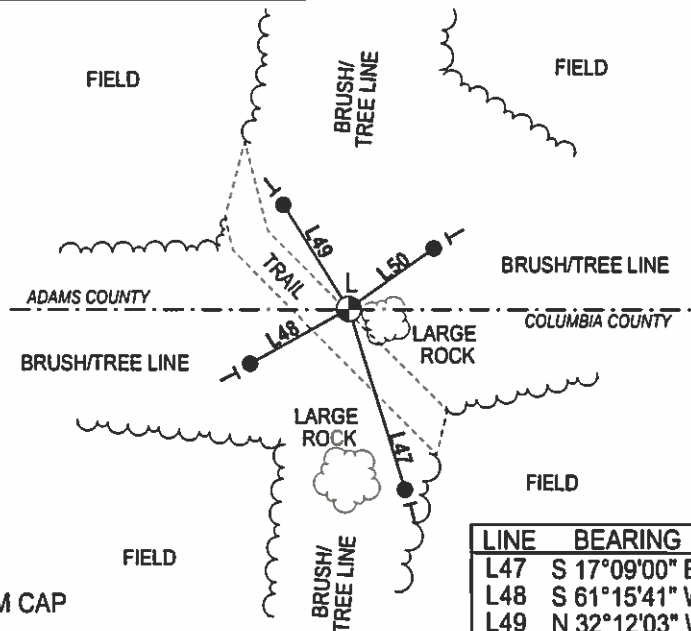
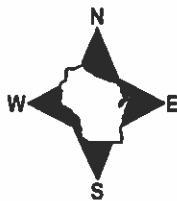


DATA SHOWN HERE ON THIS TIE SHEET IS CORRECT AND COMPLETE TO THE BEST OF MY KNOWLEDGE AND BELIEF.

PROFESSIONAL LAND SURVEYOR

DATE 3/15/17

- TIE SKETCH -



- 3/4" X 18" IRON REBAR SET, 1.50#/FT
- ⊙ 1" IRON ROD W/COLUMBIA COUNTY ALUMINUM CAP
- └ VINYL "T" POST
- └ FIBERGLASS "T" POST

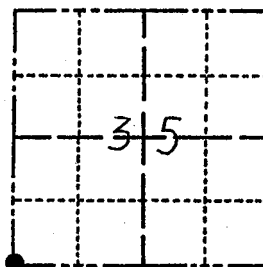
LINE	BEARING	DISTANCE
L47	S 17°09'00" E	49.04'
L48	S 61°15'41" W	29.47'
L49	N 32°12'03" W	32.02'
L50	N 54°23'12" E	27.07'

ADAMS COUNTY

Survey Monument Record

TYPE OF MONUMENT: Harrison Standard
STATE PLANE COORDINATES: N
E
ELEVATION - M.S.L. DATUM:
THETA ANGLE:
FIELD BOOK: 542 PAGE 21

CORNER NO. 129
SECTION 35
TOWN 14
RANGE 7



LOCATION (Indicated by 'X')

BASIS FOR MONUMENT LOCATION

(Use reverse side if necessary)

Show info such as: History of corner, with reference to Vol. and pg, dates, surveyor; exact description of monument replaced; if location computed, by taped or EDM traverse; landowner remarks, etc.

Researched Adams & Columbia County survey notes. Found survey on record made by A.J. Barrett in Adams County recorded in V.2 Pg.184 in 1896. Bearing trace has been lost and all evidence of same. Used 1' Dia Fence Post for corner and traversed to 5/4 Cor to verify. Recorded distance 2648.58, actual distance 2647.02'. Traversed north to W 1/4 Cor. 2641.70 actual, Barrett 2646.60. Accepted Fe corner as section corner E.D.M. Traverse Proj 6585 File 22-73-12, Mid-State Assoc.

SEAL:



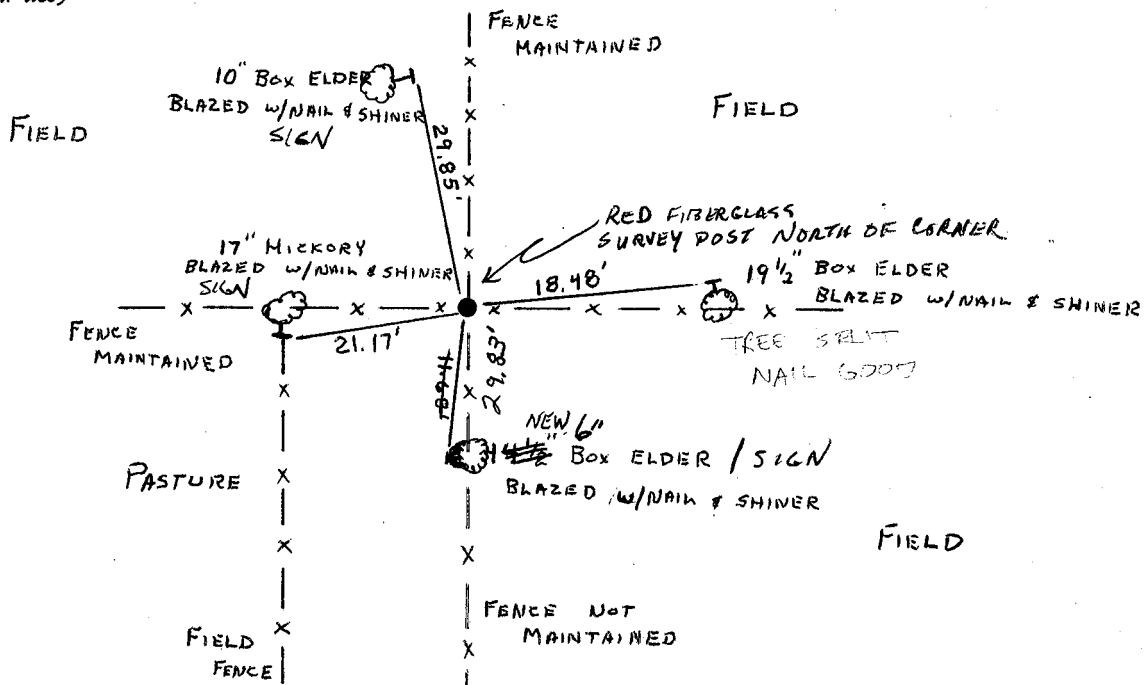
CERTIFIED CORRECT:

Allen D. Rohde
Registered Land Surveyor

DATE: 7-21-77

TIE SKETCH

(Show at least four ties)



MAINTENANCE RECORD

Date	Init.	Remarks
12-7-81	SK-DW	Ties O.K.
3-17-86	GR-SS	O.K.
1-12-81	GR-CK	OK
12-18-01	JG	1-NEW TIE, TO BRASS CAP AT CORNER
1-23-06	JG	OK
1-3-12	MS	OK

U. S. PUBLIC LAND SURVEY MONUMENT RECORD

COLUMBIA COUNTY

INSTRUCTIONS: This record shall show the location of the corner and shall include all of the following nine elements (a through i).

(a) Identify the corner by reference to the U. S. public land survey system.

○ - Corner monument restored.

CORNER MONUMENT RESTORED WAS THE

NE CORNER OF SECTION 3, T. 13 N., R. 7 E., TOWN OF LEWISTON, COL. CO.

CORNER HISTORY:

ORIGIN:

BY SURVEYOR(S) _____

DATE: _____

PERPETUATION: (PAGE, DATE & SURVEYOR)

VOL. I SEE PREVIOUS TIE SHEET.

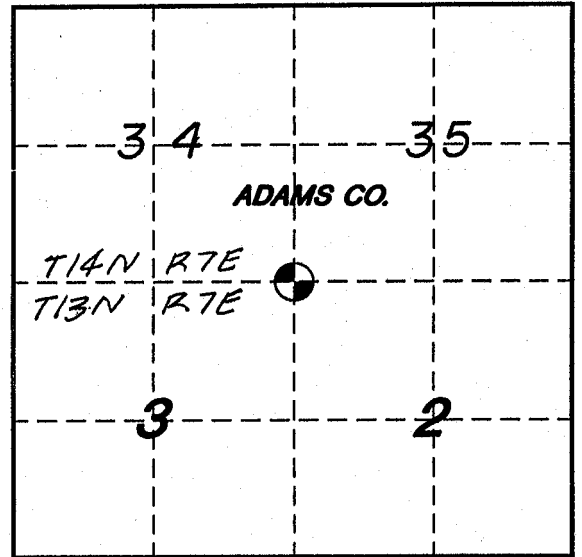
VOL. II _____

B.P.R. _____

FIELD BOOK _____

RECENT SURVEYS: (REF., DATE & SURVEYOR)

TIE SHEET BY ALLEN D. ROHDE, PLS. DATED 7-21-77



(b) Describe any record evidence, monument evidence, occupational evidence, testimonial evidence or any other material evidence you considered, and whether the monument was found or placed.

EVIDENCE FOUND:

RECORD , MONUMENT , OCCUPATIONAL , TESTIMONIAL , OTHER .

ORIGINAL CORNER MONUMENT LOCATION WAS N/A FOUND.

DESCRIPTION: FOUND BASE OF BROKEN HARRISON MONUMENT AND ONE WITNESS TREE WITH NAIL. REPLACED CORNER WITH 1"X30" IRON ROD WITH ALUM. CAP. SET FOR WITNESS MONUMENTS.

ALSO ESTABLISHED GPS COORDINATES. SEE COMPOSITE MAP IN LAND RECORDS OFFICE.

COLUMBIA COUNTY MONUMENT SET IN PLACE. (FOR ANY ADD'L INFO SEE BACK)

(c) In the plan view drawing below, provide reference ties to at least 4 witness monuments, or, if the location is within a municipality, to at least 2 witness monuments. (Witness monuments shall be made of concrete, natural stone, iron or other equally durable material.)

Describe witness monuments:

(d) Show a plan view drawing depicting the relevant monuments and reference ties which is sufficient in detail to enable accurate relocation of the corner monument if the corner monument is disturbed. Indicate north.

- COLUMBIA COUNTY MONUMENT SET - 1"x30" REBAR WITH ALUMINUM CAP

- 3/4"x30" REBAR W/ALUM. WITNESS CAP SET

- (OTHER) FOUND ALUM. WITNESS MONUMENT

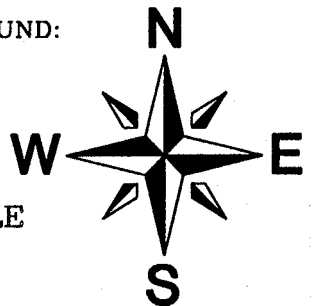
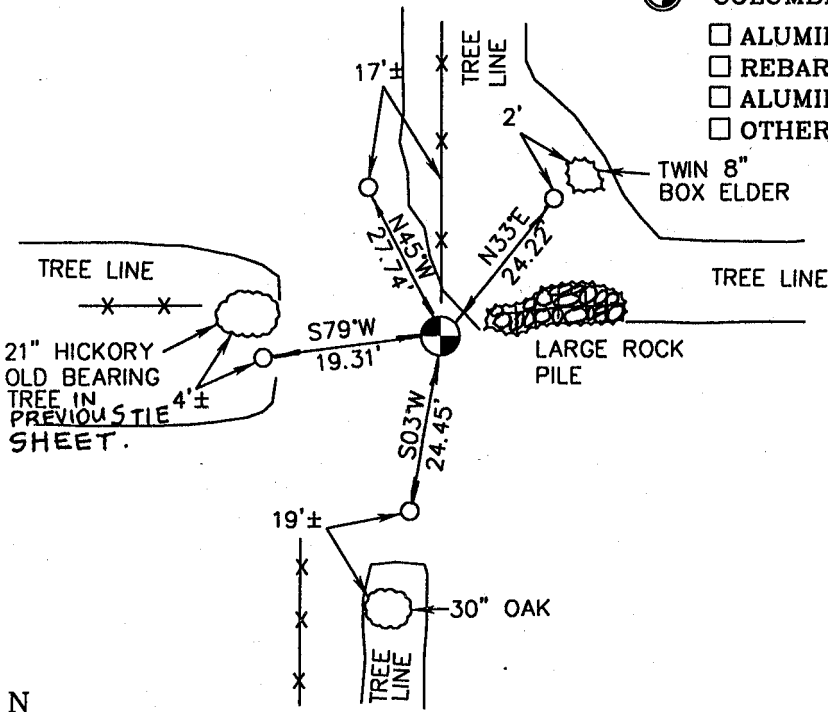
- COLUMBIA COUNTY MONUMENT FOUND:

ALUMINUM MONUMENT

REBAR WITH CAP

ALUMINUM CAP IN CONCRETE

OTHER _____



NO SCALE

(e) Describe any material discrepancy between the location of the corner as restored or reestablished and the location of that corner as previously restored or reestablished by distance and direction. Show the discrepancy on the plan view drawing under (d), above. Show the distances between the corner as previously restored or reestablished and (1), the corner as restored or reestablished, and (2), to at least 2 of the witness monuments shown on the drawing in (d), above.

FOUND: _____

SET BY: _____

JOB REF: _____

BEARS _____, _____ FROM CORNER MON. SET.

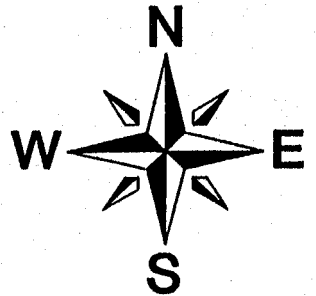
(f) Was the corner restored through acceptance of (1), an obliterated evidence location, or (2), a found perpetuated location?

THIS CORNER WAS RESTORED THROUGH FOUND PERPETUATED LOCATION.

(g&h) Was the corner reestablished through lost corner proportionate methods? If so, show the method, including the directions and distances to other public land survey corners used as evidence or used for proportioning in determining the corner location?

BEARINGS REFERENCED TO _____
DISTANCES ARE: _____ GRID _____ GROUND
GRID FACTOR: _____

NO SCALE



picture taken: yes no



(i) I, JAMES R. GROTHMAN
(type or print name) certify that the corner location shown on this record was determined by me or under my direction and control and that this U.S. Public Land Survey Monument Record is correct and complete to the best of my knowledge and belief.

James R. Grothman _____
Signature Date