

35 SECTION 14 TOWN 07 RANGE

ADAMS COUNTY

COUNTY CORNER NO: 131
 ROMPORTOL ID: 41407350000

PUBLIC LAND SURVEY MONUMENT RECORD

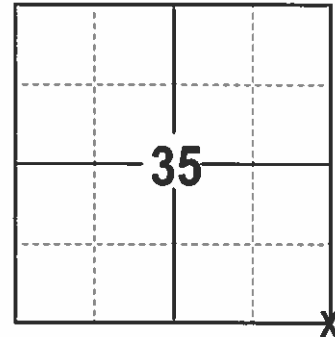
TYPE OF MONUMENT: HARRISON
 ADAMS COUNTY COORDINATES, NAD 83 (2007)

N. 100799.443

E. 583702.124

ELEVATION- --- DATUM ---

FIELD WORK DATE: 2/15/2017



LOCATION
 (INDICATE CORNER BY "X")

BASIS FOR MONUMENT LOCATION

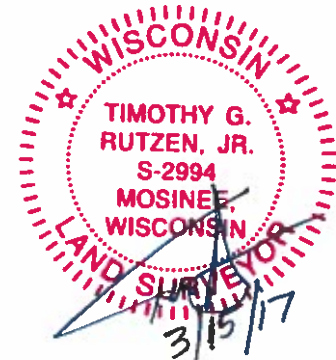
1977- PLS 1191 SET A HARRISON. RESEARCHED ADAMS AND COLUMBIA COUNTY SURVEY NOTES. FOUND SURVEY ON RECORD BY J.S. WILLIAMS IN VOL. 2 PG. 70 AND BY A.J. BARRATT IN VOL. 2 PG. 184. FOUND DEPRESSION ON B.T. ESTABLISHED BY WILLIAMS. SET CORNER FROM OLD B.T. EVIDENCE AND CHECKED DISTANCE TO THE WEST WHICH MATCHED BARRATT'S DISTANCE WITHIN REASON. EDM TRAVERSE, PROJECT 6585 FILE 22-73-12, MID STATE ASSOCIATES.

1985- PLS 1761 FOUND A HARRISON PER TIE SHEET DATED 7/18/1977 TO BE A 7/8" IRON ROD, BY PLS 1191. NE WITNESS GONE PLACED A PK NAIL ON NORTH SIDE OF 9" HICKORY AS SHOWN BELOW, ALL OTHER TIES "OK".

2001- PLS 1321 FOUND A HARRISON AND SET 4 TIES.

2017 - PLS 2994 FOUND A HARRISON FLUSH THE SURFACE AND 4 EXISTING TIES. HARRISON FITS WELL WITH TIES, ACCEPTED HARRISON AND REMEASURED TO EXISTING TIES.

SEAL:



DATA SHOWN HERE ON THIS TIE SHEET IS CORRECT AND COMPLETE TO THE BEST OF MY KNOWLEDGE AND BELIEF.

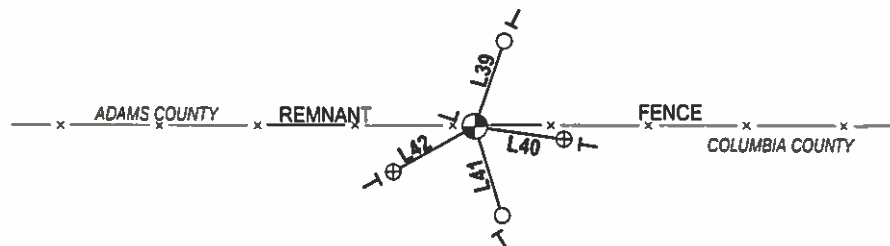
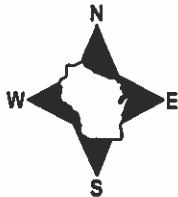
PROFESSIONAL LAND SURVEYOR

DATE 3/15/17

- TIE SKETCH -

NOTE: THE CORNER FALLS 730± EAST OF CTH XX.

OPEN HARDWOODS/BRUSH



OPEN HARDWOODS

- ⊕ 3/4" IRON ROD W/ALUMINUM CAP FOUND
- ⊙ HARRISON FOUND
- VINYL "T" POST
- └ FIBERGLASS "T" POST

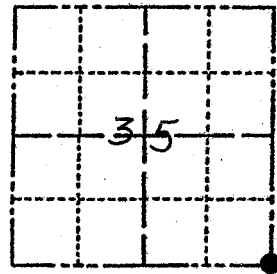
LINE	BEARING	DISTANCE
L39	N 19°03'50" E	23.48'
L40	S 81°58'47" E	23.39'
L41	S 17°12'32" E	24.19'
L42	S 61°03'43" W	24.44'

ADAMS COUNTY

Survey Monument Record

TYPE OF MONUMENT: Harrison Standard
 STATE PLANE COORDINATES: N _____
 E _____
 ELEVATION — M.S.L. DATUM: _____
 THETA ANGLE: _____
 FIELD BOOK: 542 PAGE 21

CORNER NO. 131
 SECTION 35
 TOWN 14
 RANGE 7



LOCATION
(Indicated by 'X')

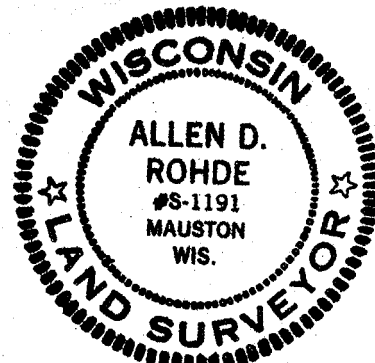
SEAL:

BASIS FOR MONUMENT LOCATION

(Use reverse side if necessary)

Show info such as: History of corner, with reference to Vol. and pg, dates, surveyor; exact description of monument replaced; if location computed, by taped or EDM traverse; landowner remarks, etc.

Researched Adams & Columbia County survey notes, Found surveys by J.S Williams in U.2 Pg 70 and survey by A.S. BARRETT in U.2 Pg 184 Found depression of B.T. established by Williams. Set Corner of A of evidence of old B.T. and checked distance to west which matched BARRETT'S distance within reason. E.D.M. Traverse, Proj 6585. File 22-73-12, Mid-State Assoc.



CERTIFIED CORRECT:

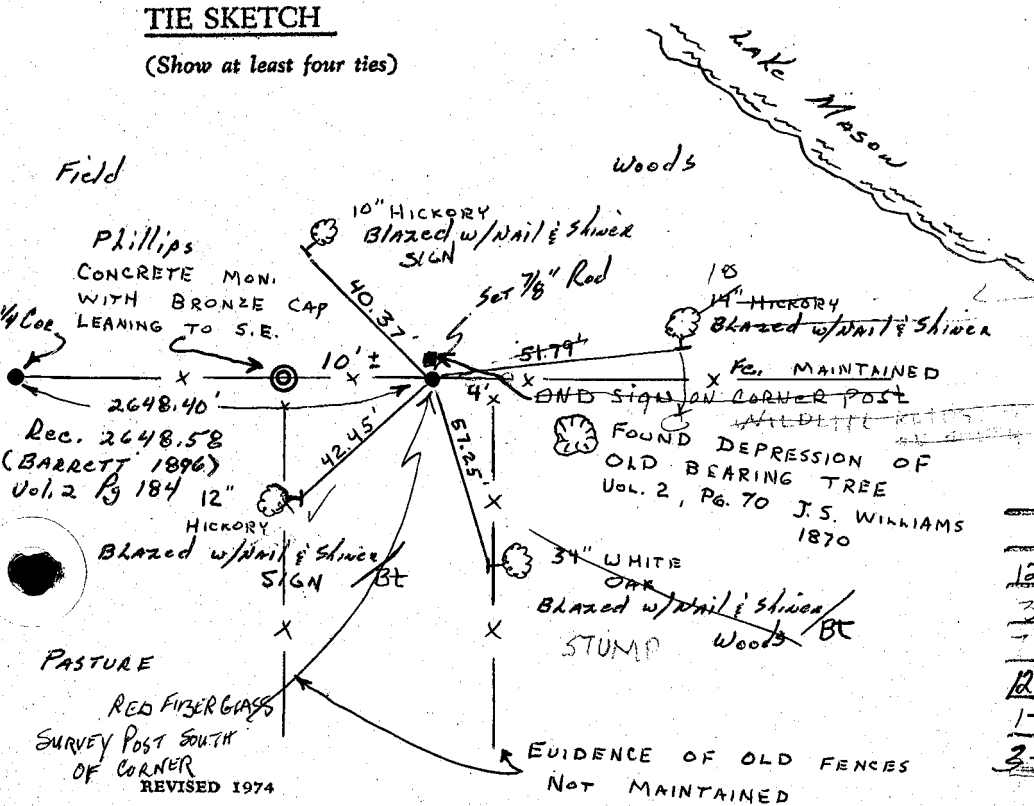
Allen D. Rohde
Registered Land Surveyor

DATE: 7-18-77

12-18-01, FOUND CAP 3/4" RODS NORTH, EAST, SO, WEST
 * NOTE: GET UPDATED COLUMBIA Co. TIE SHEET

TIE SKETCH

(Show at least four ties)



DNR SIGN POST
14" GONE

MAINTENANCE RECORD

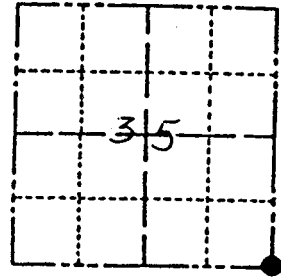
Date	Init.	Remarks
12-7-81	SK-DW	TIES O.K.
3-17-86	GF-S	OK
7-2-97	GS	OK
12-18-01	JG	TIES OK
1-23-06	JG	OK
3-2-11	GS	SEE GROWTHIAN TIES 01-05-01

ADAMS COUNTY

Survey Monument Record

TYPE OF MONUMENT: Harrison Standard
 STATE PLANE COORDINATES: N _____
 E _____
 ELEVATION — M.S.L. DATUM: _____
 THETA ANGLE: _____
 FIELD BOOK: 542 PAGE 21

CORNER NO. 121
 SECTION 35
 TOWN 14
 RANGE 7



LOCATION
(Indicated by 'X')

SEAL:



CERTIFIED CORRECT:

Allen D. Rohde
 Registered Land Surveyor

DATE: 7-18-77

BASIS FOR MONUMENT LOCATION

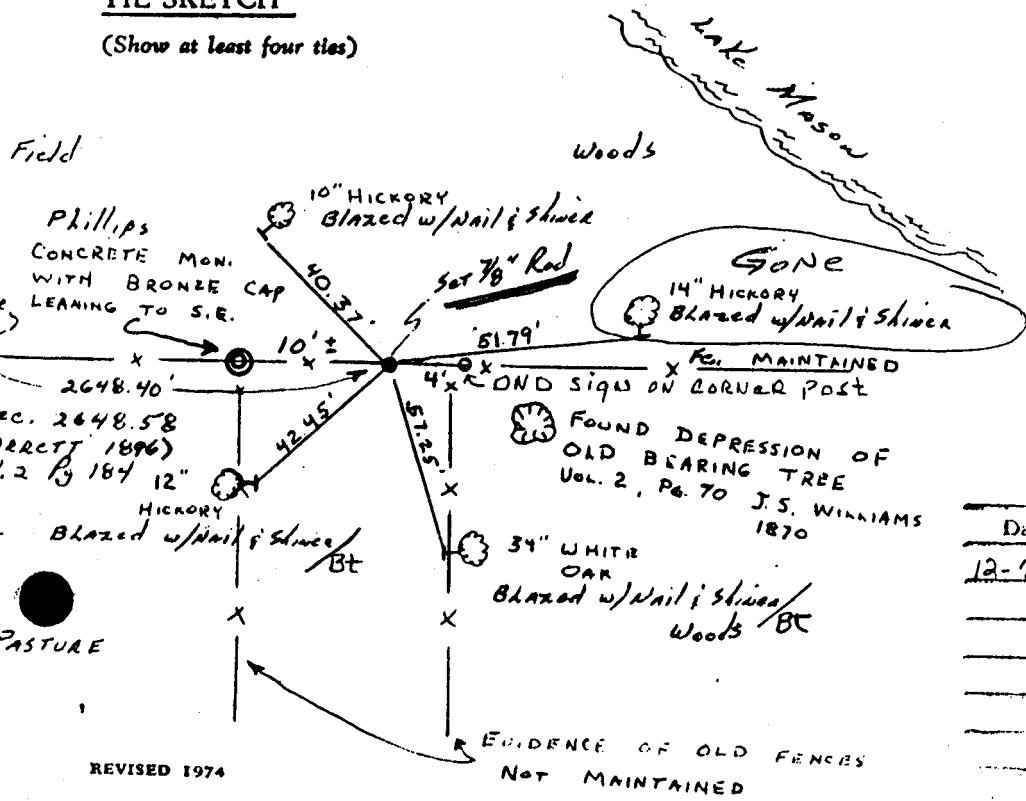
(Use reverse side if necessary)

Show info such as: History of corner, with reference to Vol. and pg. dates, surveyor; exact description of monument replaced; if location computed, by taped or EDM traverse; landowner remarks, etc.

Researched Adams & Columbia County survey notes, Found surveys by J.S Williams in U.2 Pg 70 and survey by A.J. Barrett in U.2 Pg 184 Found depression of B.T. established by Williams. Set Corner of A of evidence of old B.T. and checked distance to west which matched BARRETT'S distance within reason. E.D.M. Traverse, Proj 6585 File 22-73-12, Mid-State Assoc.

TIE SKETCH

(Show at least four ties)



MAINTENANCE RECORD

Date	Init.	Remarks
12-7-81	SK-DW	T/C's OK

REVISED 1974

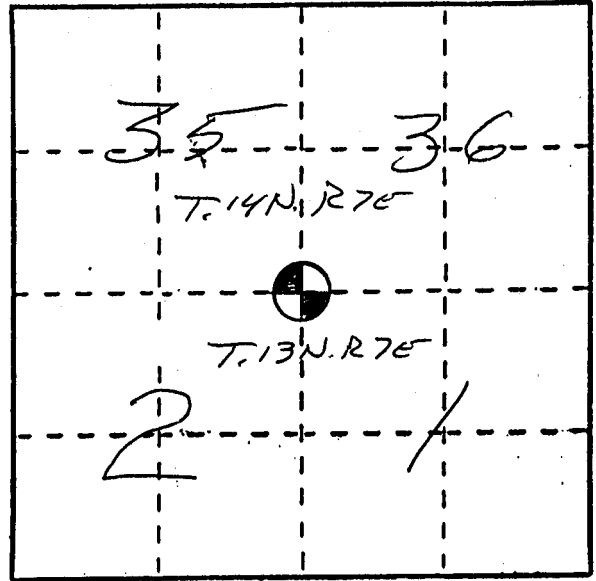
U. S. PUBLIC LAND SURVEY MONUMENT RECORD

INSTRUCTIONS: This record shall show the location of the corner and shall include all of the following nine elements (a through i).

(a) Identify the corner by reference to the U.S. public land survey system.

○ = Corner monument restored.

Found the SW corner, SECTION 36, T.14N, R7E, TOWN of New HAUGH, ADAMS Co., WI



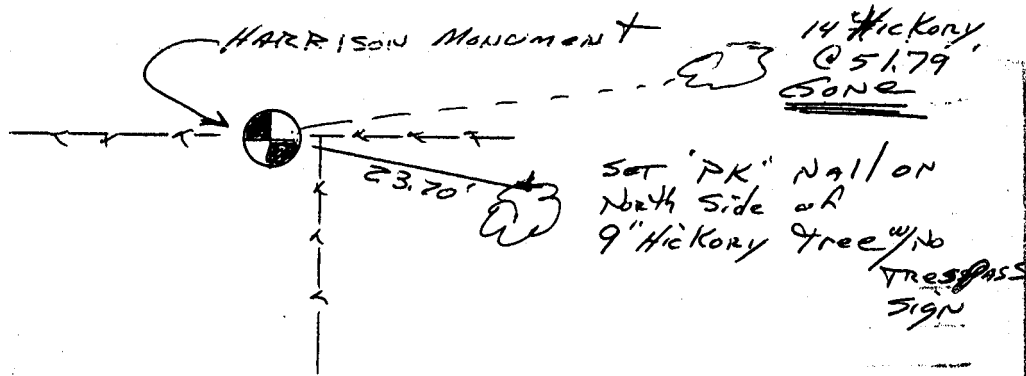
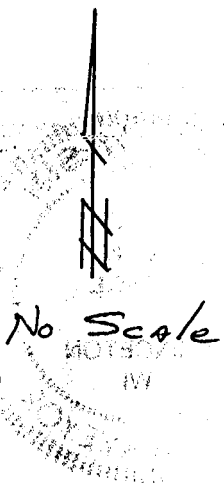
(b) Describe any record evidence, monument evidence, occupational evidence, testimonial evidence or any other material evidence you considered, and whether the monument was found or placed.

Found HARRISON Monument AT location shown by A.D. Rohde Tie Sheet of 7-18-'77, To be a 7/8" Rod. Hickory tree NE is now gone. Placed a "PK" Nail on North side of 9" Hickory tree as shown below, other ties, OK.

(c) In the plan view drawing below, provide reference ties to at least 4 witness monuments, or, if the location is within a municipality, to at least 2 witness monuments. (Witness monuments shall be made of concrete, natural stone, iron or other equally durable material.) Describe witness monuments.

(d) Show a plan view drawing depicting the relevant monuments and reference ties which is sufficient in detail to enable accurate relocation of the corner monument if the corner monument is disturbed. Indicate north.

(SEE TIE SHEET BY A.D. Rohde, 7-18-77, For other TIES.)



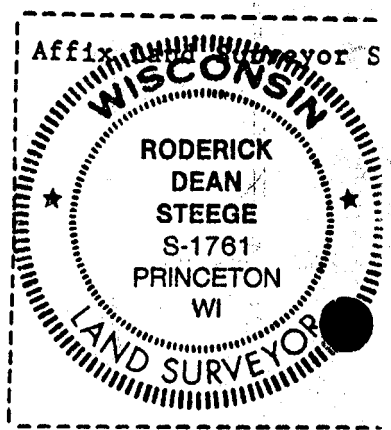
GEC. File 285-9

(d) REASSURE ANY MATERIAL DISCREPANCY between the location of the corner as restored or reestablished and the location of that corner as previously restored or reestablished, above. Show the discrepancy on the plan view drawing under (d), above. Show the distances between the corner as previously restored or reestablished and (1) the corner as restored or reestablished, and (2) to at least 2 of the witness monuments shown on the drawing in (d), above.

(f) Was the corner restored through acceptance of (1) an obliterated evidence location, or, (2) a found perpetuated location?

This was a found perpetuated location

(g&h) Was the corner reestablished through lost corner proportionate methods? If so, show the method, including the directions and distances to other public land survey corners used as evidence or used for proportioning in determining the corner location?



(1) I, Roderick D Steege RLS 1761
(type or print name) certify that the corner location shown on this record was determined by me or under my direction and control and that this U.S. Public Land Survey Monument Record is correct and complete to the best of my knowledge and belief.

Roderick D Steege Date 2/29/85

U. S. PUBLIC LAND SURVEY MONUMENT RECORD

COLUMBIA COUNTY

INSTRUCTIONS: This record shall show the location of the corner and shall include all of the following nine elements (a through i).

(a) Identify the corner by reference to the U. S. public land survey system.

○ - Corner monument restored.

CORNER MONUMENT RESTORED WAS THE

NW CORNER OF
SECTION 1, T. 13 N., R. 7 E.,
TOWN OF LEWISTON, COL. CO.

CORNER HISTORY:

ORIGIN:

BY SURVEYOR(S) _____

DATE: _____

PERPETUATION: (PAGE, DATE & SURVEYOR)

VOL. I SEE PREVIOUS TIE SHEET

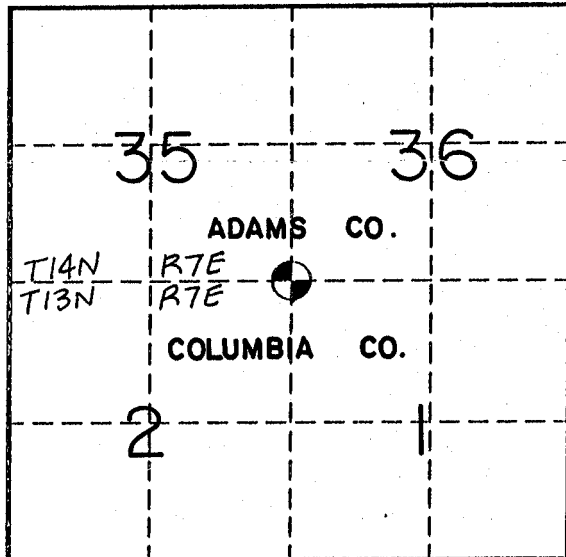
VOL. II _____

B.P.R. _____

FIELD BOOK _____

RECENT SURVEYS: (REF., DATE & SURVEYOR)

TIE SHEET BY ALLEN D. ROHDE, RLS. DATED 7-18-77



(b) Describe any record evidence, monument evidence, occupational evidence, testimonial evidence or any other material evidence you considered, and whether the monument was found or placed.

EVIDENCE FOUND:

RECORD _____, MONUMENT , OCCUPATIONAL _____, TESTIMONIAL _____, OTHER _____.

ORIGINAL CORNER MONUMENT LOCATION WAS N/A FOUND.

DESCRIPTION: FOUND HARRISON MONUMENT. SET FOUR WITNESS MONUMENTS.

ALSO ESTABLISHED GPS COORDINATE VALUES. SEE COMPOSITE MAP IN LAND RECORDS OFFICE.

COLUMBIA COUNTY MONUMENT SET IN PLACE. (FOR ANY ADD'L INFO SEE BACK)

(c) In the plan view drawing below, provide reference ties to at least 4 witness monuments, or, if the location is within a municipality, to at least 2 witness monuments. (Witness monuments shall be made of concrete, natural stone, iron or other equally durable material.)

Describe witness monuments:

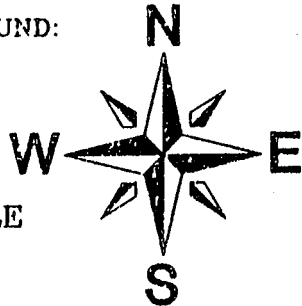
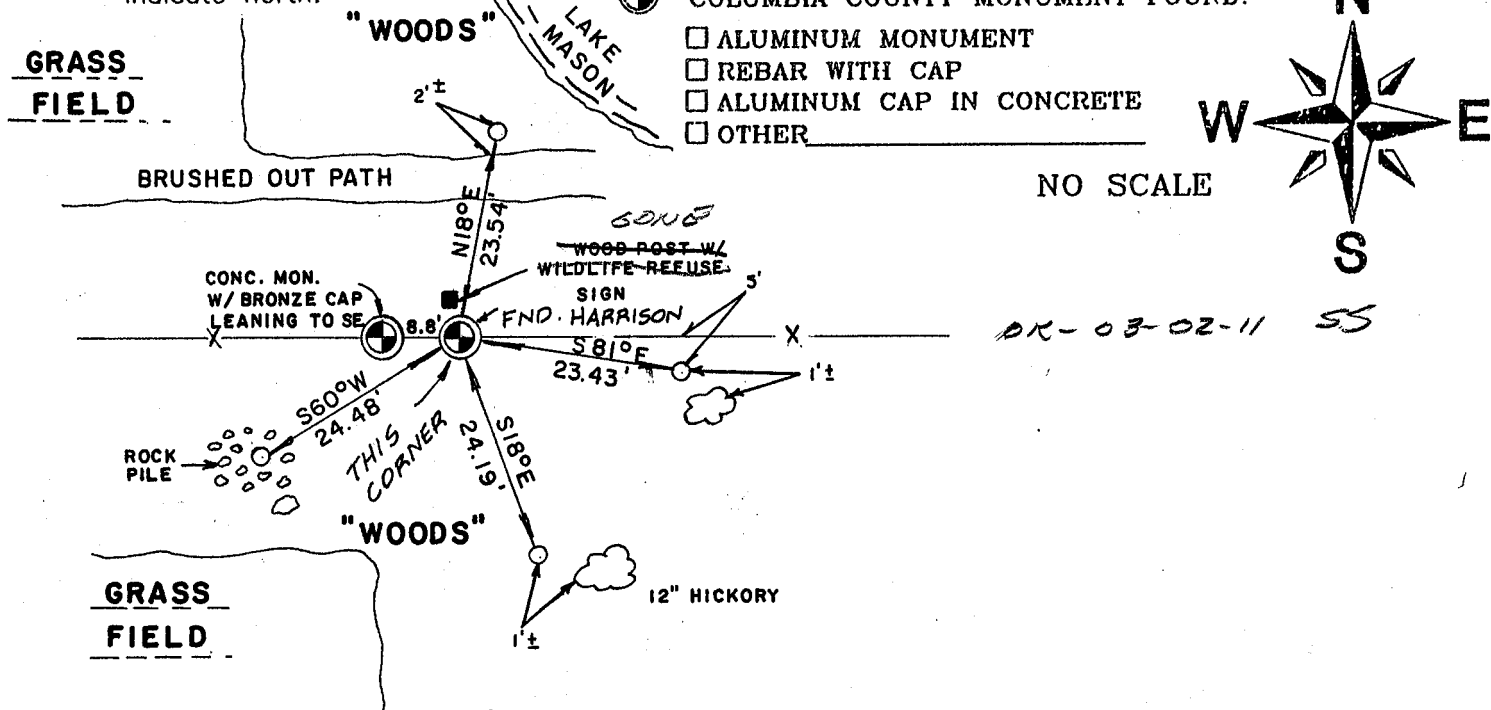
(d) Show a plan view drawing depicting the relevant monuments and reference ties which is sufficient in detail to enable accurate relocation of the corner monument if the corner monument is disturbed. Indicate north.

- COLUMBIA COUNTY MONUMENT SET - 1"x30" REBAR WITH ALUMINUM CAP

- 3/4"x30" REBAR W/ALUM. WITNESS CAP SET (OTHER) _____

- COLUMBIA COUNTY MONUMENT FOUND:

- ALUMINUM MONUMENT
- REBAR WITH CAP
- ALUMINUM CAP IN CONCRETE
- OTHER _____



NO SCALE

DR-03-02-11 55

N

E

DRAFTED BY C.A.E. DATE 9/15/99 CORNER REF. A-21

0058

(e) Describe any material discrepancy between the location of the corner as restored or reestablished and the location of that corner as previously restored or reestablished by distance and direction. Show the discrepancy on the plan view drawing under (d), above. Show the distances between the corner as previously restored or reestablished and (1), the corner as restored or reestablished, and (2), to at least 2 of the witness monuments shown on the drawing in (d), above.

FOUND: _____
SET BY: _____
JOB REF: _____
YEARS _____, _____ FROM CORNER MON. SET.

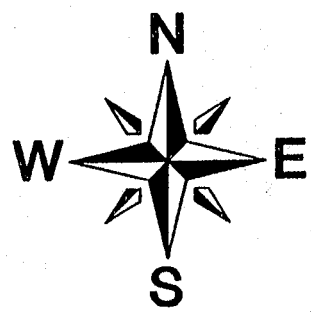
(f) Was the corner restored through acceptance of (1), an obliterated evidence location, or (2), a found perpetuated location?

THIS CORNER WAS RESTORED THROUGH FOUND PERPETUATED LOCATION.

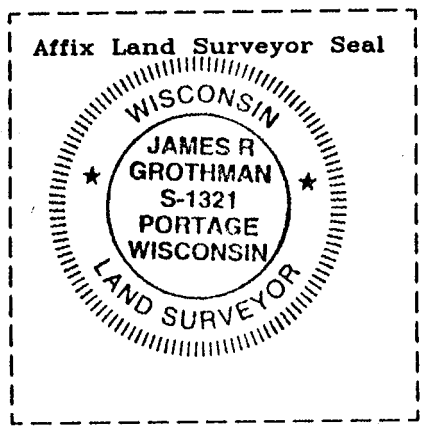
(g&h) Was the corner reestablished through lost corner proportionate methods? If so, show the method, including the directions and distances to other public land survey corners used as evidence or used for proportioning in determining the corner location?

BEARINGS REFERENCED TO _____
DISTANCES ARE: _____ GRID _____ GROUND
GRID FACTOR: _____

NO SCALE



picture taken: yes no



(i) I, James R Grothman
(type or print name) certify that the corner location shown on this record was determined by me or under my direction and control and that this U.S. Public Land Survey Monument Record is correct and complete to the best of my knowledge and belief.
James R Grothman _____ 2/05/01
Signature Date