

33
SECTION

16
TOWN

05
RANGE

ADAMS COUNTY

COUNTY CORNER NO: 126

ROMPORTOL ID: 41605330020

PUBLIC LAND SURVEY MONUMENT RECORD

TYPE OF MONUMENT: **M.C. ALUMINUM DISK IN CONCRETE (MEANDER CORNER)**
ADAMS COUNTY COORDINATES, NAD 83 (2007)

N. 164709.591

E. 507957.508

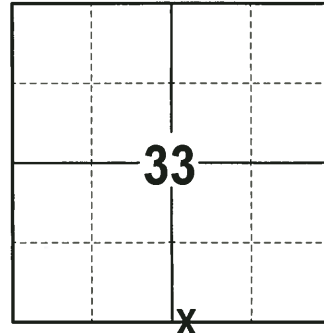
ELEVATION- _____ DATUM _____

FIELD WORK DATE: 10/11/2017

BASIS FOR MONUMENT LOCATION

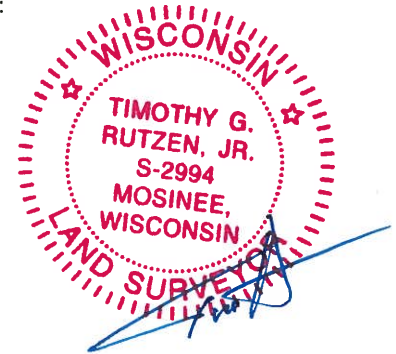
1982 - PLS 1478 FOUND A CONCRETE MONUMENT AT THE CORNER LOCATION. THE DISTANCE TO THE NORTHWEST CORNER OF SECTION 3 MATCHES THE DISTANCE STAMPED INTO THE TOP OF THE CONCRETE MONUMENT. ACCEPTED AS CORRECT AND LEFT IN PLACE. THEIR WERE NO RECORDS OF THE MONUMENT ON FILE IN THE COUNTY SURVEYOR RECORDS. TIED-OUT CORNER.

2017 - PLS 2994 FOUND AN ALUMINUM DISK IN CONCRETE 3" ABOVE THE GROUND SURFACE AND 2 WITNESS TREES. THE MONUMENT AGREES WITH THE EXISTING WITNESS TREES. ACCEPTED THE ALUMINUM DISK IN CONCRETE AS THE CORNER LOCATION. SET 4 NEW TIES AND MEASURED TO THE TIES AND WITNESS TREES.



LOCATION
(INDICATE CORNER BY "X")

SEAL:

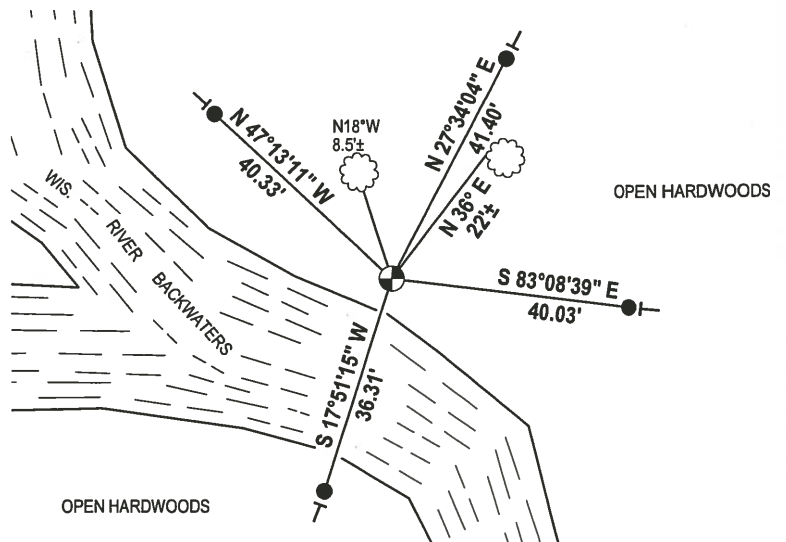
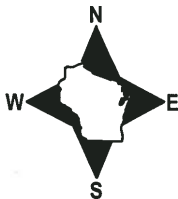


DATA SHOWN HERE ON THIS TIE SHEET IS CORRECT AND COMPLETE TO THE BEST OF MY KNOWLEDGE AND BELIEF.

PROFESSIONAL LAND SURVEYOR

DATE 12-4-17

- TIE SKETCH

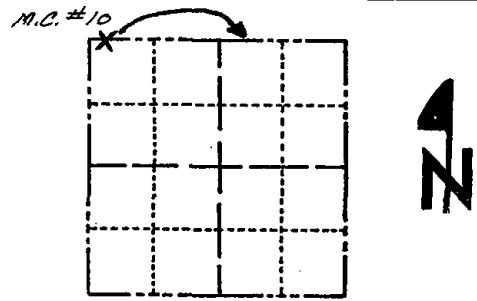


- 3/4" x 18" IRON REBAR SET, 1.50#/FT
- ⊙ M.C. ALUMINUM DISK IN CONCRETE FOUND
- ┆ VINYL "T" POST
- ☼ WITNESS TREE FOUND

Government Land Corner Certificate

ADAMS _____ County
 TYPE OF MONUMENT: Concrete Monument/Brass Cap
 STATE PLANE COORDINATES: N _____
 E _____
 ELEVATION — M.S.L. DATUM: _____
 THETA ANGLE: _____
 FIELD BOOK: 5 PAGE 89-90
 DRAWN BY: SS

CORNER NO. 6 NC
 SECTION 4
 TOWN 15
 RANGE 5



LOCATION
 (Indicated by 'X')

SEAL:



DATA SHOWN HERE ON
 CERTIFIED CORRECT:

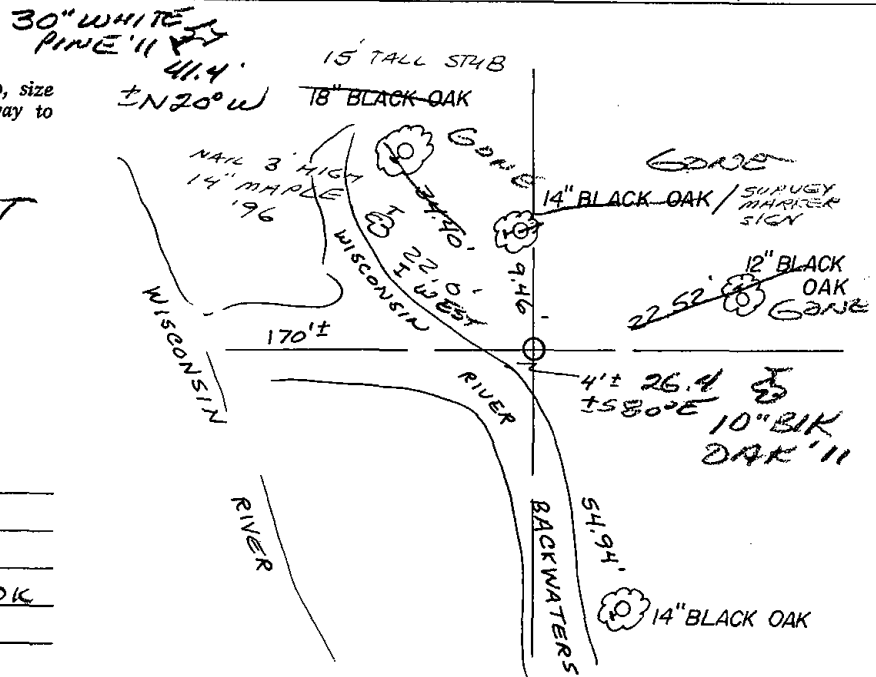
Gregory P. Rhinehart
 Registered Land Surveyor

DATE: 1-382

TIE SKETCH

Show at least four ties, also fence lines, roads, topo, size and type of witness trees and if off road - best way to arrive at corner.

2-2-01 FOUND
STEEL POST ± 1' EAST
FROM MONUMENT



MAINTENANCE RECORD

Date	Init.	Remarks
1-28-86	GR-SS	OK
1-15-96	SG-SS	1-NEW TIE, MON. OK
2-2-01	SS	ALL OK
11-29-06	SG-SS	ALL OK
1-07-11	SS	2 NEW TIES