

34 SECTION 16 TOWN 05 RANGE

ADAMS COUNTY

COUNTY CORNER NO: 129
ROMPORTOL ID: 41605340000

PUBLIC LAND SURVEY MONUMENT RECORD

TYPE OF MONUMENT: HARRISON (BROKEN-TOP)
ADAMS COUNTY COORDINATES, NAD 83 (2007)

N. 164728.296

E. 515276.083

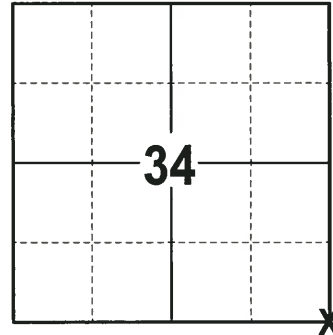
ELEVATION- _____ DATUM _____

FIELD WORK DATE: 10/11/2017

BASIS FOR MONUMENT LOCATION

1973 - PLS 878 EXCAVATED WITH A BACKHOE AT THE CORNER LOCATION AND FOUND A 3/4"X24" IRON ROD. VERIFIED THE LOCATION OF THE CORNER BY TRAVERSING AROUND SECTION 3. REPLACED THE IRON ROD WITH A HARRISON MONUMENT AND TIED OUT THE CORNER.

2017 - PLS 2994 FOUND A HARRISON MONUMENT WITH A BROKEN TOP 4" BELOW THE GROUND SURFACE. FOUND NO EVIDENCE OF ANY TIES OR WITNESSES. ACCEPTED THE HARRISON MONUMENT WITH A BROKEN TOP AS THE CORNER LOCATION. SET 4 NEW TIES AND MEASURED TO THE TIES.



LOCATION
(INDICATE CORNER BY "X")

SEAL:



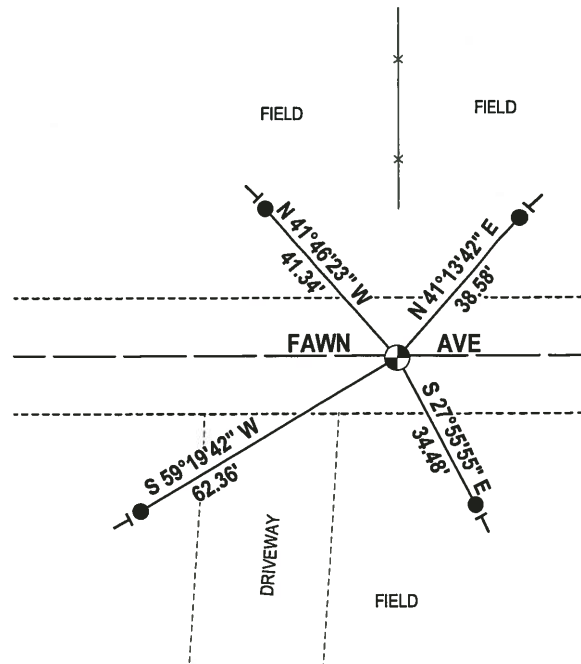
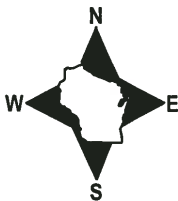
DATA SHOWN HERE ON THIS TIE SHEET IS CORRECT AND COMPLETE TO THE BEST OF MY KNOWLEDGE AND BELIEF.

PROFESSIONAL LAND SURVEYOR

DATE 12-4-17

- TIE SKETCH

NOTE: THE CORNER FALLS 0.5'± SOUTH OF THE CENTERLINE OF FAWN AVE.



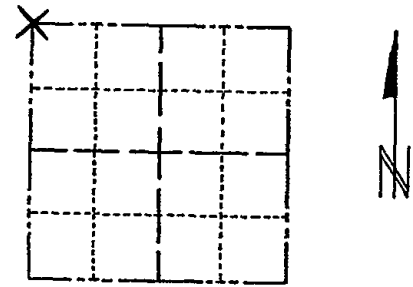
- 3/4" x 18" IRON REBAR SET, 1.50#/FT
- ⊙ HARRISON (BROKEN-TOP) FOUND
- | VINYL "T" POST

ADAMS COUNTY

Survey Monument Record

TYPE OF MONUMENT: 30" HARRISON
 STATE PLANE COORDINATES: N _____
 E _____
 ELEVATION — M.S.L. DATUM: _____
 THETA ANGLE: _____
 FIELD BOOK: _____ PAGE _____

CORNER NO. 339
 SECTION 2
 TOWN 15
 RANGE 5



LOCATION
 (Indicated by 'X')

BASIS FOR MONUMENT LOCATION

(Use reverse side if necessary)

Show info such as: History of corner, with reference to Vol. and pg, dates, surveyor; exact description of monument replaced; if location computed, by taped or EDM traverse; landowner remarks, etc.

Excavated with backhoe. Found $\frac{3}{4}$ " x 24" iron rod. Replaced with Harrison after a traverse of section 3.

SEAL:



CORNER	J.K.	10-28-75	D.M. - S.S.
"	"	1-28-86	G.R. - S.S.
ALL OK		1-10-91	JG - KZ
OK		1-10-96	JG - SS
OK		1-24-01	JG

CERTIFIED CORRECT:

Anthony B. Kiedrowski
 Registered Land Surveyor
 DATE: Aug. 73

TIE SKETCH OK 4-24-06 - JG
MON OK 1-07-11 SS
 (Show at least four ties)

