

## PUBLIC LAND SURVEY MONUMENT RECORD

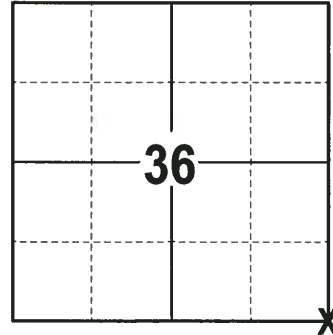
TYPE OF MONUMENT: HARRISON  
 ADAMS COUNTY COORDINATES, NAD 83 (2007)

N. 164735.722

E. 525862.728

ELEVATION-      DATUM     

FIELD WORK DATE: 10/09/2017



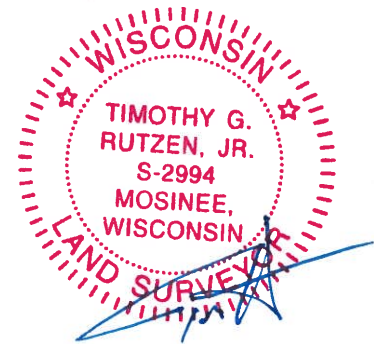
**LOCATION**  
 (INDICATE CORNER BY "X")

### BASIS FOR MONUMENT LOCATION

1980 - PLS 584 DUG IN THE CORNER AREA AND FOUND NO EVIDENCE OF THE CORNER. MEASURED FROM A KNOWN CORNER TO THE SOUTH, NORTH TO THE TOWN LINE, ALSO SINGLED PROPORTIONED THE DISTANCE AGAINST THE GOVERNMENT DISTANCE AND SET ALL SECTION CORNERS AND QUARTER CORNERS ON A STRAIGHT LINE. ALL OF THE CORNERS FELL CLOSE TO THE GOVERNMENT DISTANCES AND LOCAL PROPERTY LINES. SET HARRISON AT THE CORNER AND RE-TIED.

2017 - PLS 2994 FOUND A HARRISON MONUMENT 3" BELOW THE ROAD SURFACE AND 2 TIES. THE MONUMENT AGREES WITH THE EXISTING TIES. ACCEPTED THE HARRISON MONUMENT AS THE CORNER LOCATION. SET 2 NEW TIES AND MEASURED TO THE TIES.

SEAL:



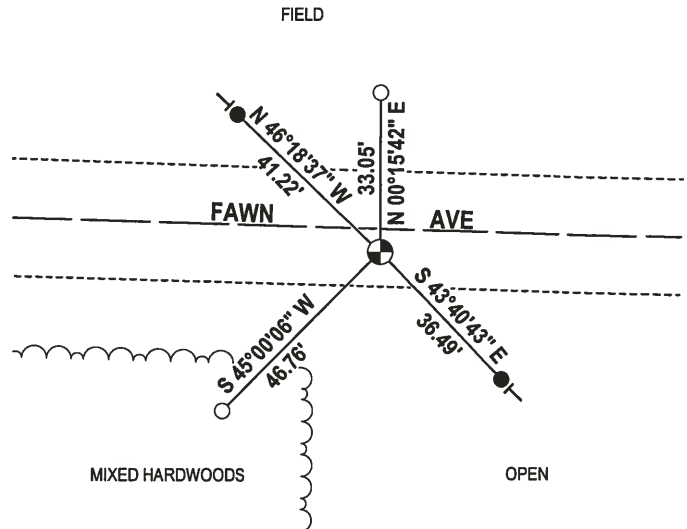
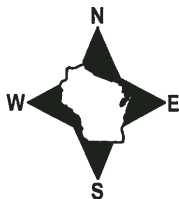
DATA SHOWN HERE ON THIS TIE SHEET IS CORRECT AND COMPLETE TO THE BEST OF MY KNOWLEDGE AND BELIEF.

PROFESSIONAL LAND SURVEYOR

DATE 12-4-17

### - TIE SKETCH -

NOTE: THE CORNER FALLS 5"± SOUTH OF THE CENTERLINE OF FAWN AVE.

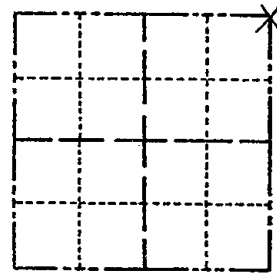


- 3/4" x 18" IRON REBAR SET, 1.50#/FT
- 3/4" IRON ROD FOUND
- ⊙ HARRISON FOUND
- VINYL "T" POST

# Government Land Corner Certificate

County \_\_\_\_\_  
 TYPE OF MONUMENT: HARRISON  
 STATE PLANE COORDINATES: N \_\_\_\_\_  
 E \_\_\_\_\_  
 ELEVATION — M.S.L. DATUM: \_\_\_\_\_  
 THETA ANGLE: \_\_\_\_\_  
 FIELD BOOK: 54 PAGE 65 a  
 DRAWN BY: K. VICKER

CORNER NO. 13  
 SECTION 1  
 TOWN 15  
 RANGE 5



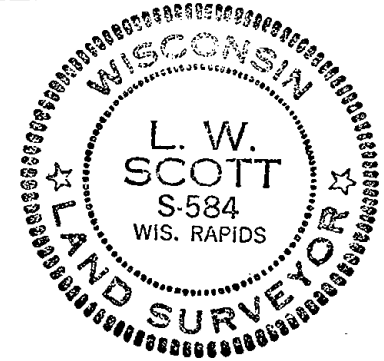
LOCATION  
(Indicated by 'X')

## BASIS FOR MONUMENT LOCATION

Show info such as: History of corner, with reference to Vol. and pg., dates, surveyor; exact description of monument replaced; if location computed, by taped or EDM traverse; landowner remarks, etc. (Use reverse side if necessary)

In setting this township corner, Tony dug in this area and found nothing. From a known corner to the South measured distance North to the town line and single proportioned the distance against the government distance and set all section corners and quarter corners on a straight line. In doing so, all corners fell very close to the government distance and local property lines. (Thank goodness for small favors.) Ties to nail and discs.

SEAL:



DATA SHOWN HERE ON  
CERTIFIED CORRECT:

*L. W. Scott*  
Registered Land Surveyor

DATE: 10/31/80

## TIE SKETCH

Show at least four ties, also fence lines, roads, topo, size and type of witness trees' and if off road - best way to arrive at corner.

