

## PUBLIC LAND SURVEY MONUMENT RECORD

TYPE OF MONUMENT: HARRISON  
 ADAMS COUNTY COORDINATES, NAD 83 (2007)

N. 162001.685

E. 515279.972

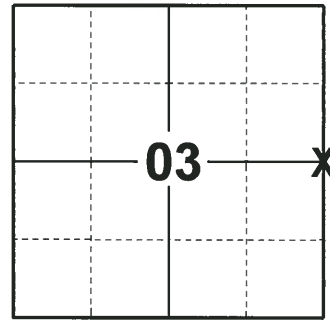
ELEVATION- - - - DATUM - - - -

FIELD WORK DATE: 07/18/2018

### BASIS FOR MONUMENT LOCATION

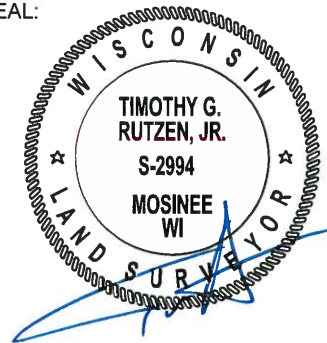
1981 - PLS 584 CALCULATED THE CORNER POSITION PROPORTIONATE BETWEEN THE SECTION CORNER TO THE NORTH AND THE SECTION CORNER TO THE SOUTH AND ON LINE. SET A HARRISON MONUMENT AND TIED OUT. NO EVIDENCE COULD BE FOUND BECAUSE OF SURROUNDING PLOWED FIELDS.

2018 - PLS 2994 FOUND A HARRISON MONUMENT 12" BELOW THE GROUND SURFACE. FOUND NO EVIDENCE OF ANY OF THE TIES OR WITNESSES DUE TO THE FIELD EXPANSION. THE CORNER LOCATION IS ONLINE BETWEEN THE SECTION CORNERS TO THE NORTH AND SOUTH BUT IS 33'± SOUTH OF BEING EQUIDISTANT. ACCEPTED THE HARRISON MONUMENT AS THE BEST EVIDENCE OF THE CORNER LOCATION. SET 4 NEW TIES AND MEASURED TO THE TIES.



**LOCATION**  
 (INDICATE CORNER BY "X")

SEAL:



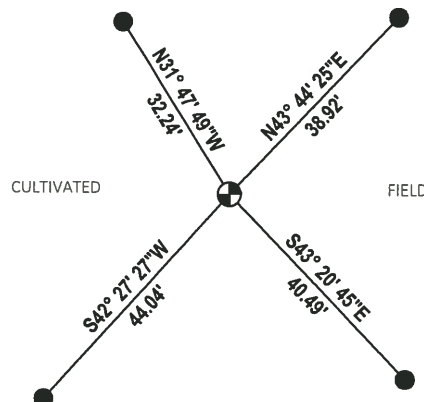
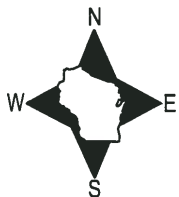
DATA SHOWN HERE ON THIS TIE SHEET IS CORRECT AND COMPLETE TO THE BEST OF MY KNOWLEDGE AND BELIEF.

PROFESSIONAL LAND SURVEYOR

DATE 8-10-18

### - TIE SKETCH

NOTE: ALL TIES ARE SET 18" BELOW THE GROUND SURFACE.

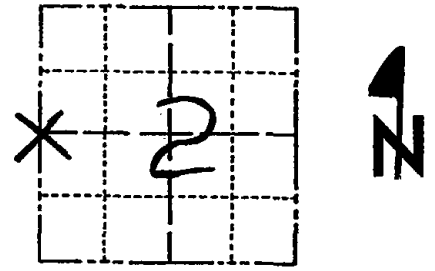


- SET 3/4" x 18" IRON REBAR, 1.50#/FT
- ⊕ FOUND HARRISON MONUMENT

# Government Land Corner Certificate

Adams County  
 TYPE OF MONUMENT: Harrison  
 STATE PLANE COORDINATES: N \_\_\_\_\_  
 E \_\_\_\_\_  
 ELEVATION — M.S.L. DATUM: \_\_\_\_\_  
 THETA ANGLE: \_\_\_\_\_  
 FIELD BOOK: 57 PAGE 144  
 DRAWN BY: T.H.

CORNER NO. 18  
 SECTION 2  
 TOWN 15  
 RANGE 5



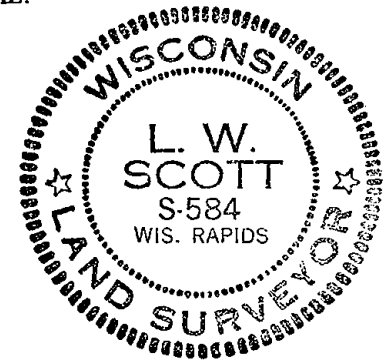
LOCATION  
 (Indicated by 'X')

## BASIS FOR MONUMENT LOCATION

Show info such as: History of corner, with reference to Vol. and pg., dates, surveyor; exact description of monument replaced; if location computed, by taped or EDM traverse; landowner remarks, etc. (Use reverse side if necessary)

Corner set proportionate between the Section corner to the North and the Section corner to the South, and on line. Note: No evidence could be found because of plowed fields all around.

SEAL:



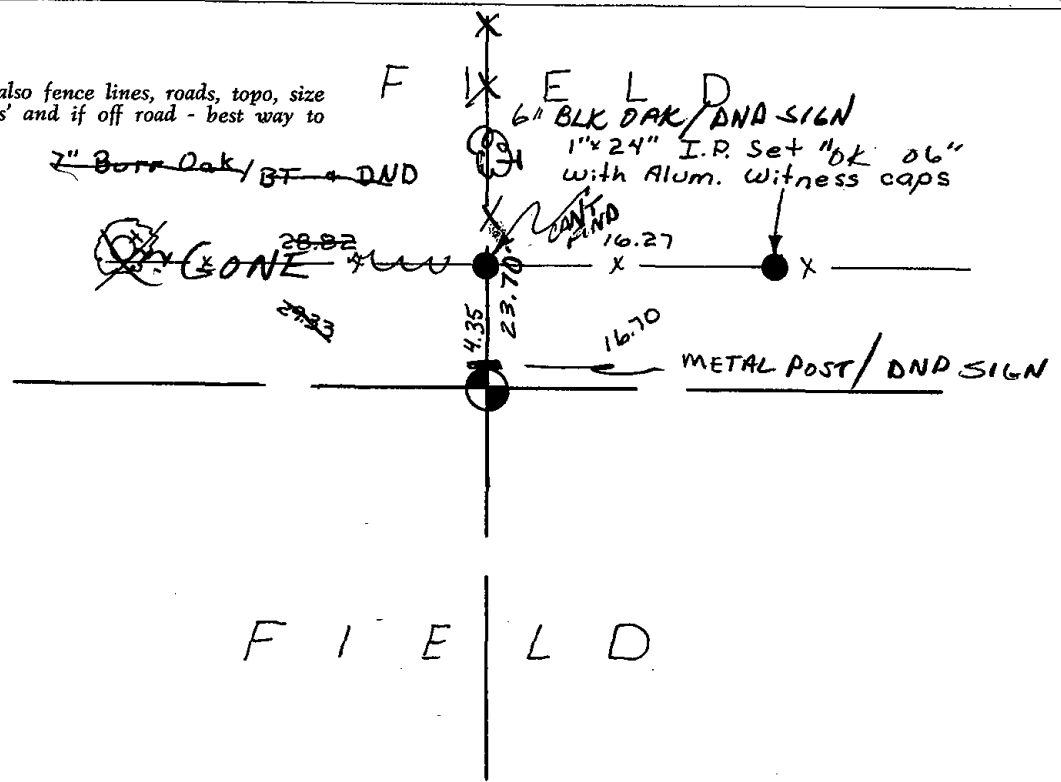
DATA SHOWN HERE ON  
 CERTIFIED CORRECT:

*L. W. Scott*  
 Registered Land Surveyor

DATE: 1/6/81

## TIE SKETCH

Show at least four ties, also fence lines, roads, topo, size and type of witness trees and if off road - best way to arrive at corner.



F I E L D

