

PUBLIC LAND SURVEY MONUMENT RECORD

TYPE OF MONUMENT: HARRISON (BROKEN-TOP)
 ADAMS COUNTY COORDINATES, NAD 83 (2007)

N. 159331.778

E. 517937.034

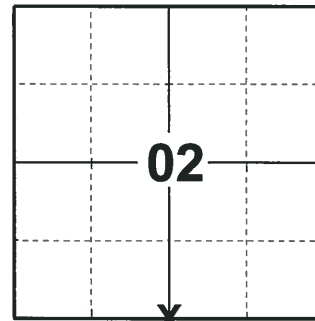
ELEVATION- DATUM

FIELD WORK DATE: 07/18/2018

BASIS FOR MONUMENT LOCATION

1980 - PLS 878 NO RECORD OF RESURVEYS. EXCAVATED WITH A BACKHOE AND FOUND A 2" x 5" x 10" DARK RED SANDSTONE. REPLACED STONE WITH HARRISON MONUMENT AND TIED OUT. (SET STONE FOUND ALONGSIDE EAST SIDE THEREOF.)

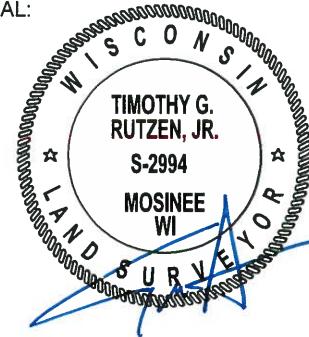
2018 - PLS 2994 FOUND A HARRISON MONUMENT WITH A BROKEN-TOP FLUSH WITH THE ROAD SURFACE AND 1 TIE. THE MONUMENT AGREES WITH THE EXISTING TIE. ACCEPTED THE HARRISON MONUMENT WITH A BROKEN-TOP AS THE CORNER LOCATION. SET 3 NEW TIES AND MEASURED TO THE TIES.



LOCATION

(INDICATE CORNER BY "X")

SEAL:



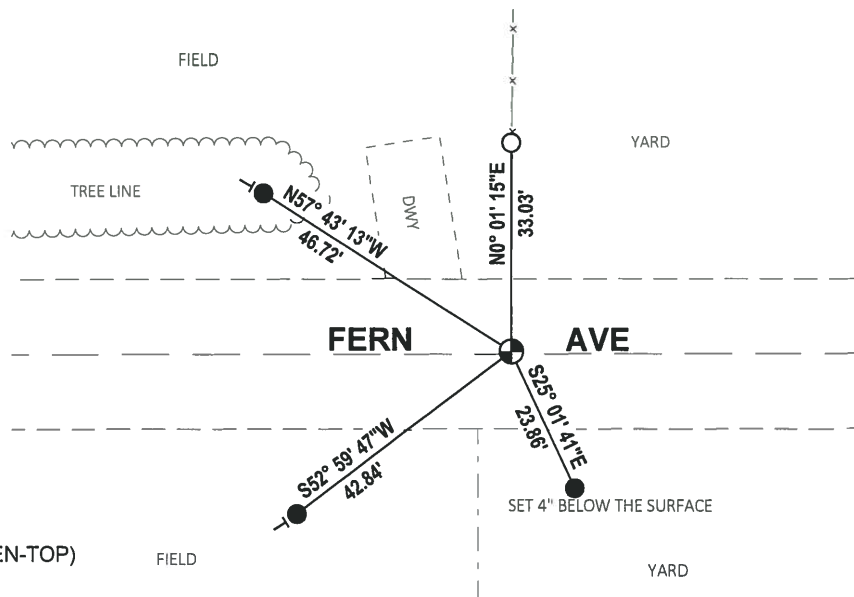
DATA SHOWN HERE ON THIS TIE SHEET IS CORRECT AND COMPLETE TO THE BEST OF MY KNOWLEDGE AND BELIEF.

PROFESSIONAL LAND SURVEYOR

DATE 8-16-18

- TIE SKETCH

NOTE: THE CORNER FALLS 0.5± NORTH OF THE CENTERLINE OF FERN AVE.



- SET 3/4" x 18" IRON REBAR, 1.50#/FT
- FOUND 3/4" IRON ROD
- ⊕ FOUND HARRISON MONUMENT (BROKEN-TOP)
- ⊣ VINYL "T" POST

Government Land Corner Certificate

Adams County

CORNER NO. 30
 SECTION 2
 TOWN 15
 RANGE 5

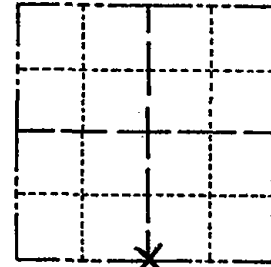
TYPE OF MONUMENT: Harrison
 STATE PLANE COORDINATES: N _____
 E _____

ELEVATION — M.S.L. DATUM: _____

THETA ANGLE: _____

FIELD BOOK: 76 (102) PAGE 22 (78)

DRAWN BY: N. J.



LOCATION
(Indicated by 'X')

BASIS FOR MONUMENT LOCATION

Show info such as: History of corner, with reference to Vol. and pg., dates, surveyor; exact description of monument replaced; if location computed, by taped or EDM traverse; landowner remarks, etc. (Use reverse side if necessary)

No record of resurveys. Excavated with backhoe, found 2 x 5 x 10" dark red sandstone. Replaced stone with Harrison monument. Set stone found alongside east side thereof.

SEAL:



DATA SHOWN HERE ON
CERTIFIED CORRECT:

Anthony B. Kiedrowski
Registered Land Surveyor

DATE: 5/27/80

TIE SKETCH

Show at least four ties, also fence lines, roads, topo, size and type of witness trees and if off road - best way to arrive at corner.

