

PUBLIC LAND SURVEY MONUMENT RECORD

TYPE OF MONUMENT: HARRISON
 ADAMS COUNTY COORDINATES, NAD 83 (2007)

N. 159321.338

E. 523225.931

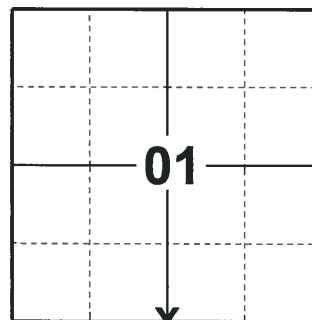
ELEVATION- DATUM

FIELD WORK DATE: 07/18/2018

BASIS FOR MONUMENT LOCATION

1980 - PLS 878 NO RECORD OF RESURVEYS. EXCAVATED WITH A BACKHOE AND FOUND A 6" x 6" x 12" SQUARED OFF WHITE SANDSTONE. LOWERED THE STONE AND SET HARRISON MONUMENT ON TOP AND TIED OUT.

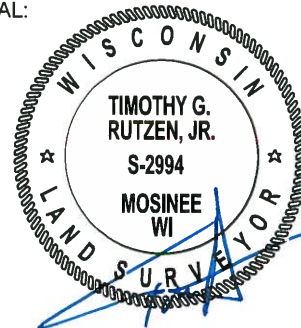
2018 - PLS 2994 FOUND A HARRISON MONUMENT 1" BELOW THE ROAD SURFACE AND 1 TIE. THE MONUMENT AGREES WITH THE EXISTING TIE. ACCEPTED THE HARRISON MONUMENT AS THE CORNER LOCATION. SET 3 NEW TIES AND MEASURED TO THE TIES.



LOCATION

(INDICATE CORNER BY "X")

SEAL:



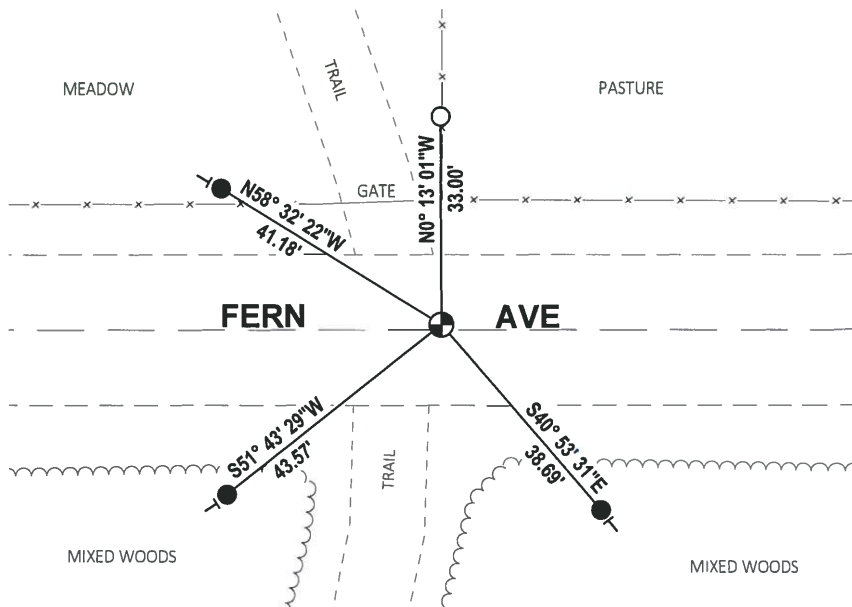
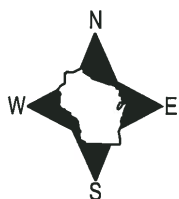
DATA SHOWN HERE ON THIS TIE SHEET IS CORRECT AND COMPLETE TO THE BEST OF MY KNOWLEDGE AND BELIEF.

PROFESSIONAL LAND SURVEYOR

DATE 8-10-18

- TIE SKETCH

NOTE: THE CORNER FALLS 1½' NORTH OF THE CENTERLINE OF FERN AVE.

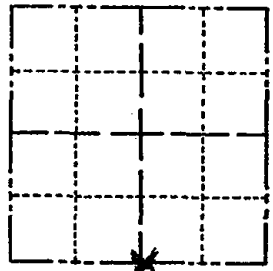


- SET 3/4" x 18" IRON REBAR, 1.50#/FT
- FOUND 3/4" IRON ROD
- ⊕ FOUND HARRISON MONUMENT
- | VINYL "T" POST

Government Land Corner Certificate

ADAMS County
 TYPE OF MONUMENT: STANDARD HARRISON
 STATE PLANE COORDINATES: N _____
 E _____
 ELEVATION — M.S.L. DATUM: _____
 THETA ANGLE: _____
 FIELD BOOK: 83 PAGE 131
 DRAWN BY: PAUL KIEDROWSKI

CORNER NO. 32
 SECTION 1
 TOWN 15
 RANGE 5



LOCATION
 (Indicated by 'X')

SEAL:



DATA SHOWN HERE ON
 CERTIFIED CORRECT:

Anthony B. Kiedrowski
 Registered Land Surveyor

DATE: 5/27/80

TIE SKETCH

Show at least four ties, also fence lines, roads, topo, size and type of witness trees and if off road - best way to arrive at corner.

