

PUBLIC LAND SURVEY MONUMENT RECORD

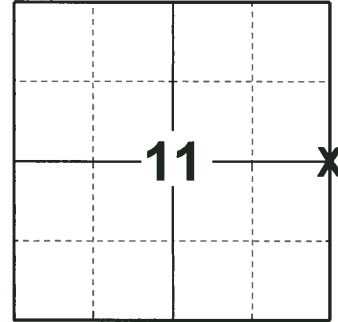
TYPE OF MONUMENT: HARRISON
 ADAMS COUNTY COORDINATES, NAD 83 (2007)

N. 156705.309

E. 520583.679

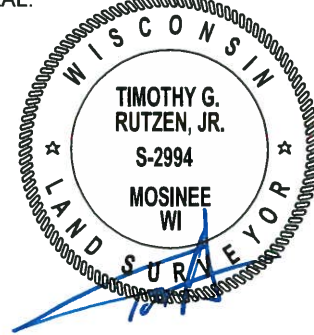
ELEVATION- _____ DATUM _____

FIELD WORK DATE: 07/29/2018



LOCATION
 (INDICATE CORNER BY "X")

SEAL:



DATA SHOWN HERE ON THIS TIE SHEET IS CORRECT AND COMPLETE TO THE BEST OF MY KNOWLEDGE AND BELIEF.

PROFESSIONAL LAND SURVEYOR

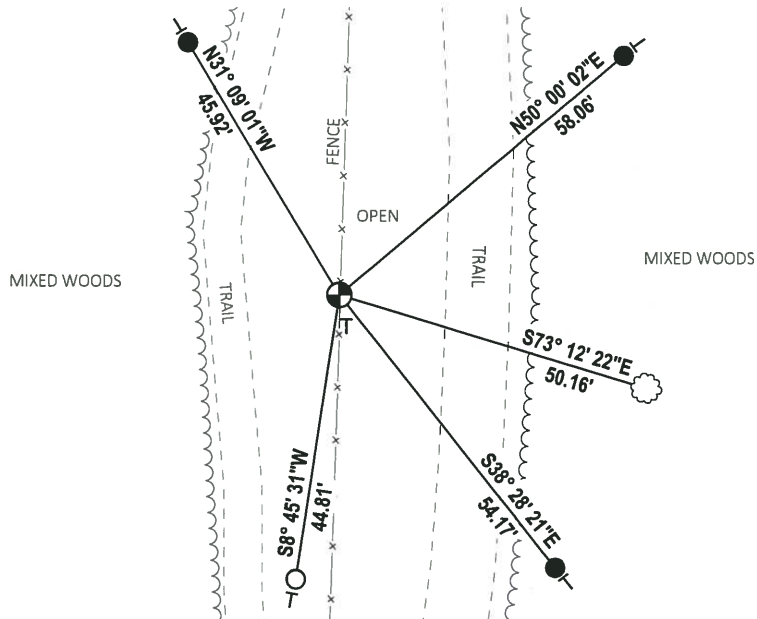
DATE 8-30-18

1980 - PLS 584 AFTER EXTENSIVE OF RESEARCH FOR THE ORIGINAL CORNER, FOUND A 1/2" IRON BAR IN CONCRETE ALONG THE NORTH-SOUTH LINE BUT IT WAS TO HARD TO DETERMINE WHAT IT WAS FOR. THERE WERE NO DESCRIPTIONS OF THIS CORNER OTHER THAN 40 ACRE TRACTS. CALCULATED THE CORNER POSITION ON LINE BETWEEN THE SOUTH SECTION CORNER AND THE NORTH SECTION CORNER. SET A HARRISON MONUMENT AT THE CORNER POSITION AND TIED OUT.

2018 - PLS 2994 FOUND A HARRISON MONUMENT 4" ABOVE THE GROUND SURFACE, 1 TIE AND 1 WITNESS TREE. THE MONUMENT AGREES WITH THE EXISTING TIE AND WITNESS TREE. ACCEPTED THE HARRISON MONUMENT AS THE CORNER LOCATION. SET 3 NEW TIES AND MEASURED TO THE TIES AND WITNESS TREE.

- TIE SKETCH

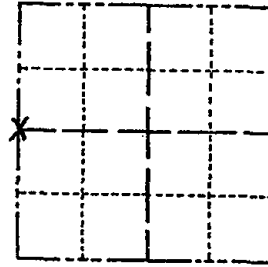
NOTE: THE CORNER FALLS 18± EAST OF THE CENTERLINE OF THE TRAIL TO THE WEST AND 22± WEST OF THE CENTERLINE OF THE TRAIL TO THE EAST.



Government Land Corner Certificate

ADAMS County
 TYPE OF MONUMENT: HARRISON
 STATE PLANE COORDINATES: N _____
 E _____
 ELEVATION — M.S.L. DATUM: _____
 THETA ANGLE: _____
 FIELD BOOK: 54 PAGE 67
 DRAWN BY: S. KMIEC

CORNER NO. 39
 SECTION 12
 TOWN 15
 RANGE 5



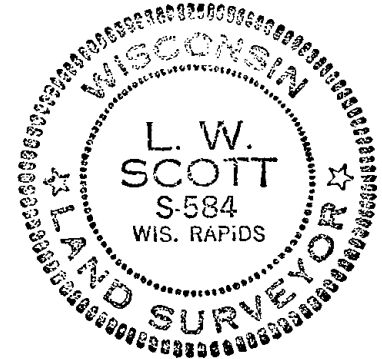
LOCATION
(Indicated by 'X')

BASIS FOR MONUMENT LOCATION

Show info such as: History of corner, with reference to Vol. and pg., dates, surveyor; exact description of monument replaced; if location computed, by taped or EDM traverse; landowner remarks, etc. (Use reverse side if necessary)

Set Harrison on line between the South Section corner and the North Section corner. After a lot of research for the original corner, found 1/2" iron bar in concrete along this line North and South but they were too hard to determine what they were for. There are no descriptions of this corner other than 40 acre tracts. Ties to nail and discs.

SEAL:



DATA SHOWN HERE ON
CERTIFIED CORRECT:

L. W. Scott
Registered Land Surveyor

DATE: 10/31/80

TIE SKETCH

Show at least four ties, also fence lines, roads, topo, size and type of witness trees and if off road - best way to arrive at corner.

