

PUBLIC LAND SURVEY MONUMENT RECORD

TYPE OF MONUMENT: HARRISON
 ADAMS COUNTY COORDINATES, NAD 83 (2007)

N. 154140.017

E. 517922.801

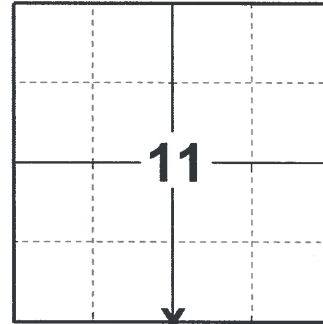
ELEVATION- _____ DATUM _____

FIELD WORK DATE: 07/26/2018

BASIS FOR MONUMENT LOCATION

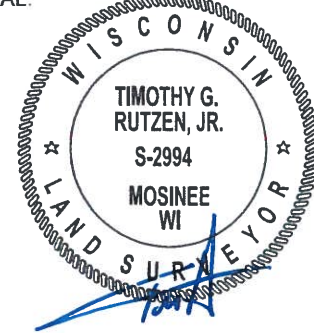
1976 - PLS 922 CHECKED COUNTY SURVEY RECORDS AND FOUND IN VOL. 2 PG. 181 WHERE COUNTY SURVEYOR BARRETT SET AN IRON IN 1896, IN 1909 COUNTY SURVEYOR M.C. SMITH SET 2 NEW BEARING TREES WITH NO MENTION OF BARRETT'S IRON. SEARCHED THE AREA AND FOUND NO EVIDENCE OF BARRETT'S IRON OR M.C. SMITH'S BEARING TREES. RE-ESTABLISHED THE CORNER POSITION BY SINGLE PROPORTION BETWEEN THE NE CORNER OF SEC. 14 AND M.P. #14 PRORATING M.C. SMITH'S DISTANCES. ACCORDING TO ADJACENT PROPERTY OWNERS THIS CORNER IS ABOUT WHERE THEY HAD BEEN TOLD THE CORNER POSITION WAS. FIT AN E.D.M. TRAVERSE GOOD. SET A HARRISON MONUMENT AT THE CORNER LOCATION AND TIED OUT.

2018 - PLS 2994 FOUND A HARRISON MONUMENT 2" ABOVE THE GROUND SURFACE AND 2 WITNESS TREES. THE MONUMENT AGREES WITH THE EXISTING WITNESS TREES. ACCEPTED THE HARRISON MONUMENT AS THE CORNER LOCATION. SET 4 NEW TIES AND MEASURED TO THE TIES AND WITNESS TREES.



LOCATION
 (INDICATE CORNER BY "X")

SEAL:



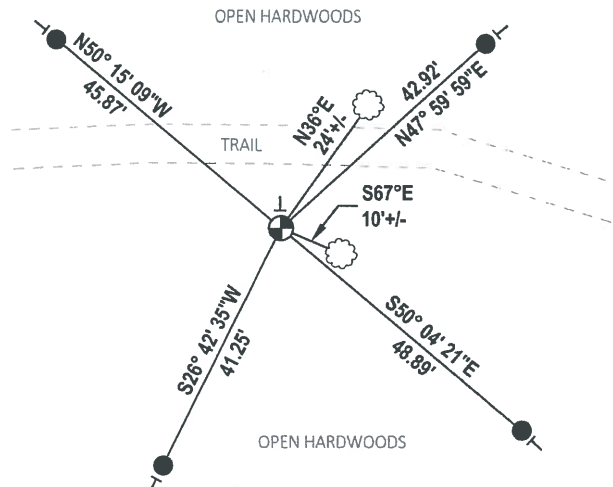
DATA SHOWN HERE ON THIS TIE SHEET IS CORRECT AND COMPLETE TO THE BEST OF MY KNOWLEDGE AND BELIEF.

PROFESSIONAL LAND SURVEYOR

DATE 8-30-18

TIE SKETCH

NOTE: THE CORNER FALLS 13± SOUTH OF THE CENTERLINE OF THE TRAIL.



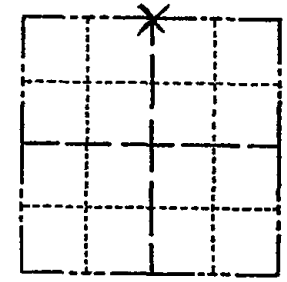
- SET 3/4" x 18" IRON REBAR, 1.50#/FT
- ⊕ FOUND HARRISON MONUMENT
- ┊ VINYL "T" POST
- ☼ WITNESS TREE

ADAMS COUNTY

Survey Monument Record

TYPE OF MONUMENT: 30" HARRISON
STATE PLANE COORDINATES: N
E
ELEVATION - M.S.L. DATUM:
THETA ANGLE:
FIELD BOOK: PAGE

CORNER NO. 959
SECTION 14
TOWN 15 N
RANGE 5 E



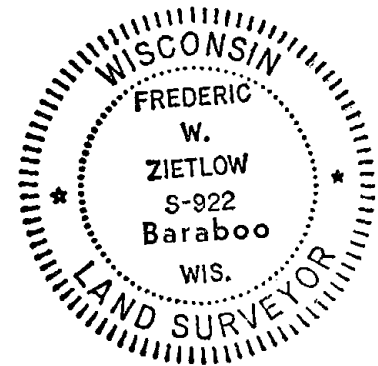
BASIS FOR MONUMENT LOCATION

(Use reverse side if necessary)

Show info such as: History of corner, with reference to Vol. and pg, dates, surveyor; exact description of monument replaced; if location computed, by taped or EDM traverse; landowner remarks, etc.

CHECKED COUNTY SURVEY RECORDS AND IN VOL 2 PG. 181 COUNTY SURVEYOR BARRETT SET AN IRON IN 1896, IN 1909 COUNTY SURVEYOR M.C. SET OUT 2 NEW BEARING TREES WITH NO MENTION OF BARRETT'S IRON. WE SPENT MANY HOURS COMBING THIS AREA & COULD NOT FIND BARRETT'S IRON OR ANY TRACE OF M.C. SMITH'S BEARING TREES. WE RE-ESTABLISHED THIS CORNER BY SINGLE PROPORTION BETWEEN THE NE COR. SEC. 14 & M.P. #14 PRORATING M.C. SMITH'S DISTANCES. ACCORDING TO ADJACENT PROPERTY OWNERS THIS CORNER IS ABOUT WHERE THEY HAD BEEN TOLD THAT IS WAS. FIT EDM TRAVERSE GOOD.

SEAL:



CERTIFIED CORRECT:

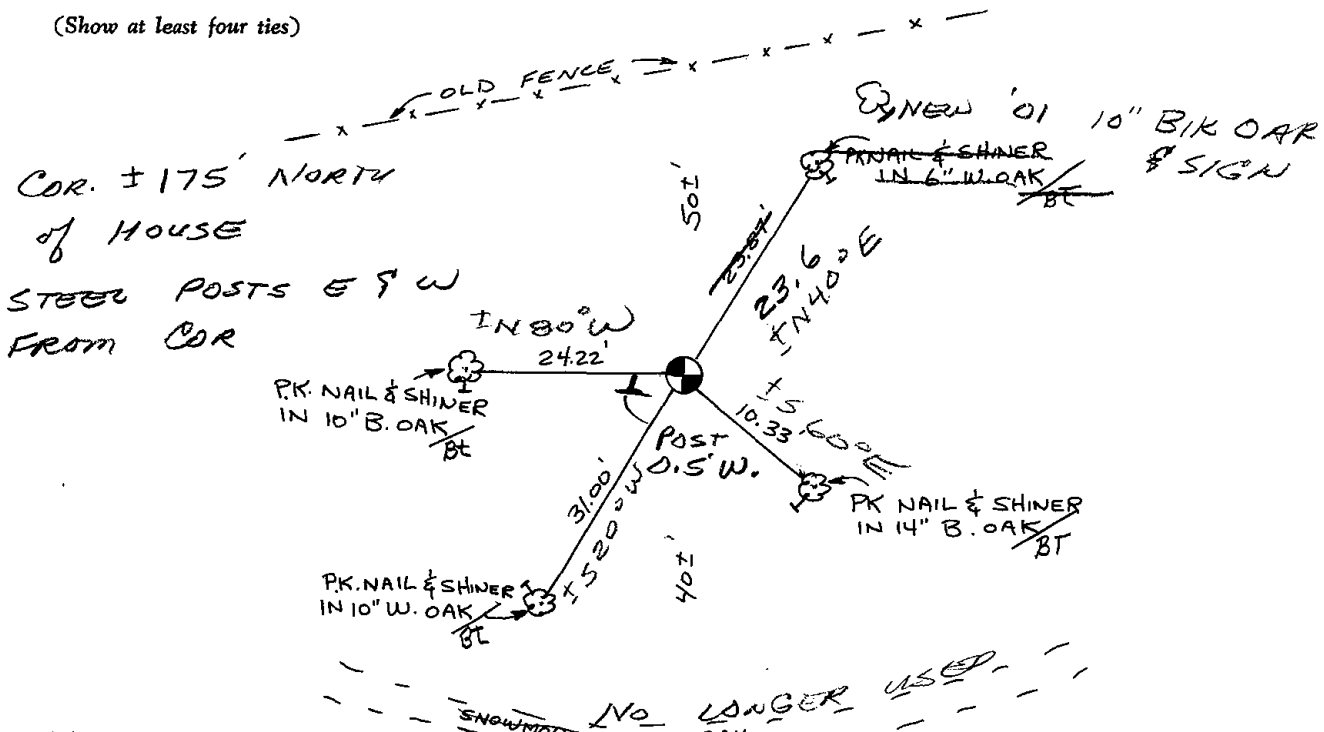
Frederic W. Zietlow

Registered Land Surveyor

DATE: MAY 14, 1976

TIE SKETCH

(Show at least four ties)



MAINTENANCE RECORD

Date	Init.	Remarks
9-8-81	SK-NJ	WOW + TIES OK.
2-5-01	SS	1 NEW TIE
11-29-06	JG-SS	ALL OK
01-14-11	SS	" 4