

## PUBLIC LAND SURVEY MONUMENT RECORD

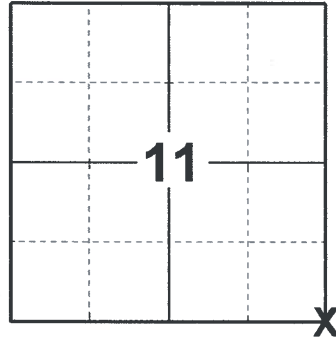
TYPE OF MONUMENT: 5" CONCRETE MONUMENT W/BRASS CAP  
 ADAMS COUNTY COORDINATES, NAD 83 (2007)

N. 154084.088

E. 520576.035

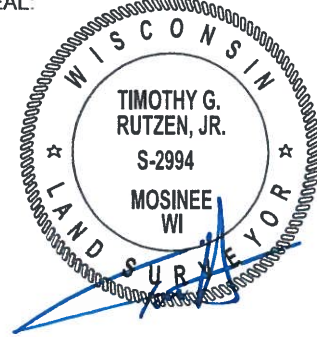
ELEVATION- \_\_\_\_\_ DATUM \_\_\_\_\_

FIELD WORK DATE: 07/26/2018



**LOCATION**  
 (INDICATE CORNER BY "X")

SEAL:



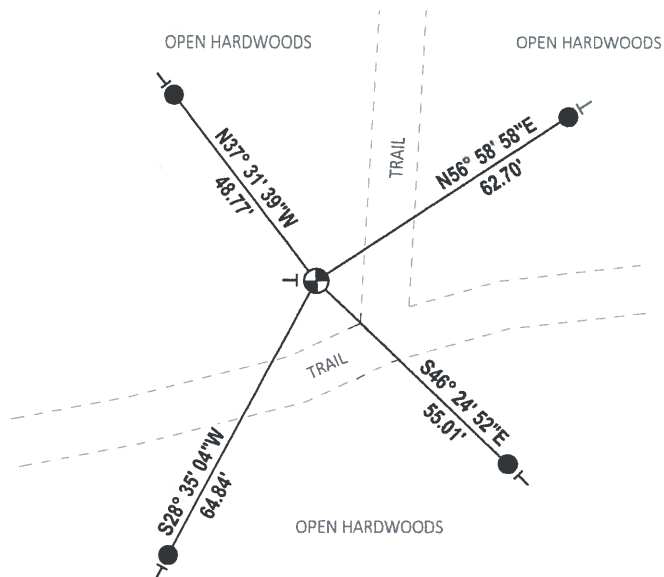
DATA SHOWN HERE ON THIS TIE SHEET IS CORRECT AND COMPLETE TO THE BEST OF MY KNOWLEDGE AND BELIEF.

PROFESSIONAL LAND SURVEYOR

DATE 8-30-18

### TIE SKETCH

NOTE: THE CORNER FALLS 17'± NORTH OF THE CENTERLINE OF THE EAST/WEST TRAIL AND 15'± EAST OF THE CENTERLINE OF THE NORTH/SOUTH TRAIL.



- SET 3/4" x 18" IRON REBAR, 1.50#/FT
- ⊕ FOUND 5" CONCRETE MONUMENT W/BRASS CAP
- ⊖ VINYL "T" POST

**ADAMS COUNTY**

**Survey Monument Record**

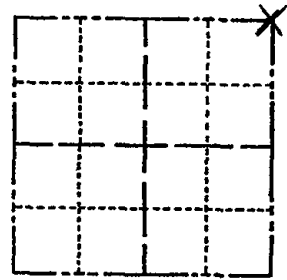
TYPE OF MONUMENT: 5" CONCRETE MARKER WITH BRASS CAP  
 STATE PLANE COORDINATES: N \_\_\_\_\_  
 E \_\_\_\_\_

ELEVATION — M.S.L. DATUM: \_\_\_\_\_

THETA ANGLE: \_\_\_\_\_

FIELD BOOK: \_\_\_\_\_ PAGE \_\_\_\_\_

CORNER NO. 960  
 SECTION 14  
 TOWN 15N  
 RANGE 5E



LOCATION  
(Indicated by 'X')

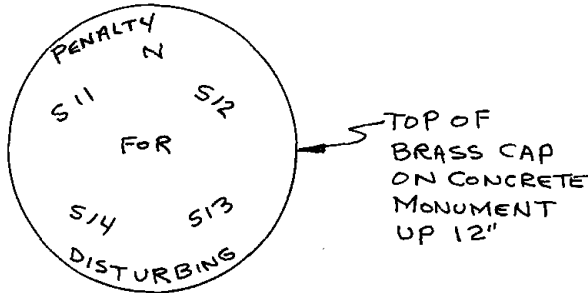
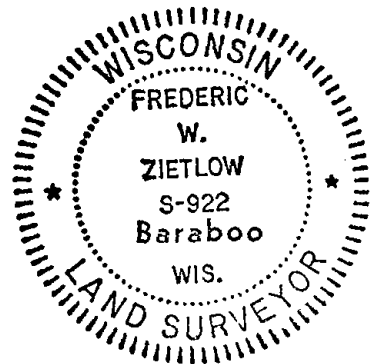
SEAL:

**BASIS FOR MONUMENT LOCATION**

(Use reverse side if necessary)

Show info such as: History of corner, with reference to Vol. and pg, dates, surveyor; exact description of monument replaced; if location computed, by taped or EDM traverse; landowner remarks, etc.

FOUND A CONCRETE MONUMENT & ACCEPTED AS CORNER. VERIFIED WITH EDM. TRAVERSE. 2 BEARING TREES VOL. 1 PG. 100 (1908) & 1 BEARING TREE VOL. 1 PG. 38 (1904) ARE ON FILE IN THE ADAMS COUNTY SURVEY RECORDS. THERE IS NO TRACE OF ANY OF THESE TREES LEFT.



CERTIFIED CORRECT:

*Frederic W. Zietlow*

Registered Land Surveyor

DATE: MAY 14, 1976

**TIE SKETCH**

(Show at least four ties)

