

12  
SECTION

15  
TOWN

05  
RANGE

# ADAMS COUNTY

COUNTY CORNER NO: 52

ROMPORTOL ID: 41505120020

## PUBLIC LAND SURVEY MONUMENT RECORD

TYPE OF MONUMENT: 5" CONCRETE MONUMENT W/DRILL HOLE

ADAMS COUNTY COORDINATES, NAD 83 (2007)

N. 154029.069

E. 523274.006

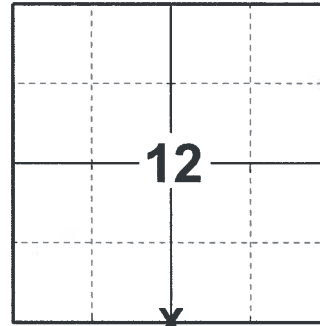
ELEVATION- \_\_\_\_\_ DATUM \_\_\_\_\_

FIELD WORK DATE: 07/29/2018

### BASIS FOR MONUMENT LOCATION

1976 - PLS 922 FOUND A CONCRETE MONUMENT AND ACCEPTED IT AS THE CORNER LOCATION. VERIFIED THE CORNER LOCATION BY FINDING A STANDING BEARING TREE AS CALLED FOR IN VOL. 2 P.126 OF THE ADAMS COUNTY SURVEY RECORDS.

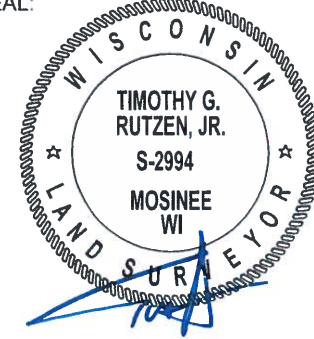
2018 - PLS 2994 FOUND A 5" CONCRETE MONUMENT WITH DRILL HOLE 5" BELOW THE GROUND SURFACE AND 2 WITNESSES. THE MONUMENT AGREES WITH THE EXISTING WITNESSES. ACCEPTED THE 5" CONCRETE MONUMENT WITH DRILL HOLE AS THE CORNER LOCATION. SET 4 NEW TIES AND MEASURED TO THE TIES AND WITNESSES.



**LOCATION**

(INDICATE CORNER BY "X")

SEAL:

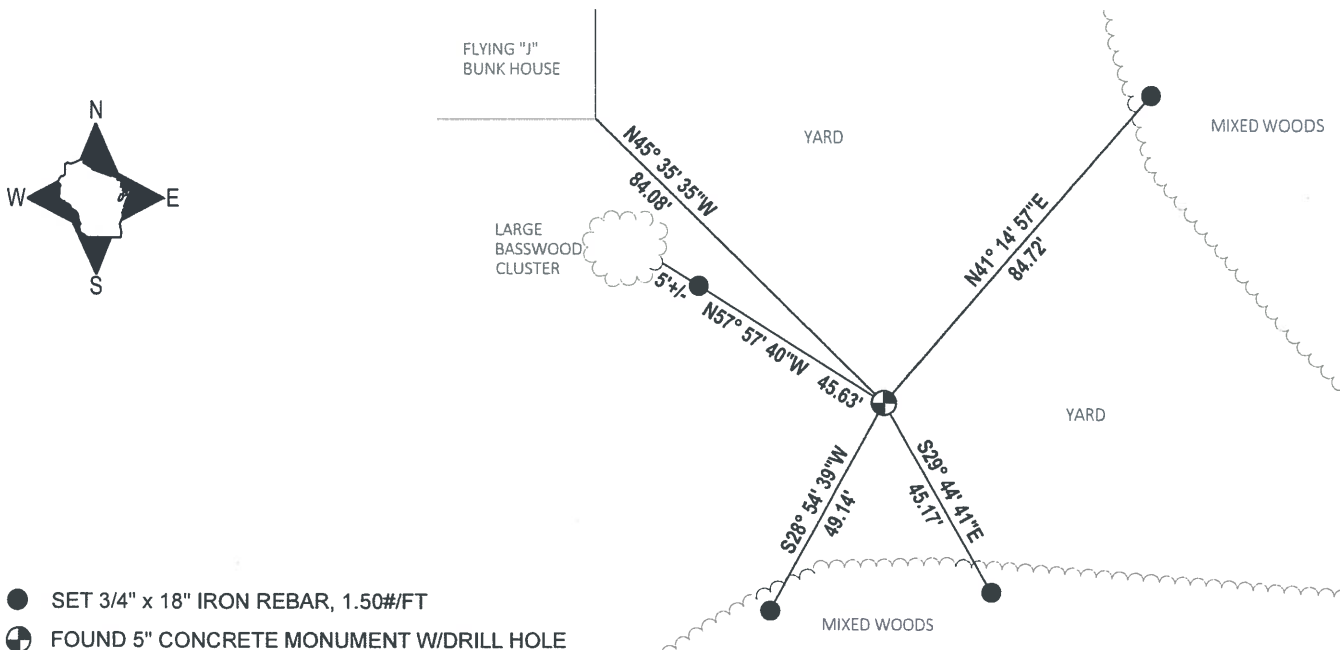


DATA SHOWN HERE ON THIS TIE SHEET IS CORRECT AND COMPLETE TO THE BEST OF MY KNOWLEDGE AND BELIEF.

PROFESSIONAL LAND SURVEYOR

DATE 8-30-18

### - TIE SKETCH



- SET 3/4" x 18" IRON REBAR, 1.50#/FT
- ⊕ FOUND 5" CONCRETE MONUMENT W/DRILL HOLE

# ADAMS COUNTY

## Survey Monument Record

TYPE OF MONUMENT: 5" CONCRETE MARKER WITH BRASS CAP

STATE PLANE COORDINATES: N \_\_\_\_\_

E \_\_\_\_\_

ELEVATION — M.S.L. DATUM: \_\_\_\_\_

THETA ANGLE: \_\_\_\_\_

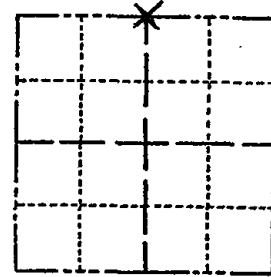
FIELD BOOK: \_\_\_\_\_ PAGE \_\_\_\_\_

CORNER NO. 961 (2)

SECTION 13

TOWN 15N

RANGE 5E



LOCATION  
(Indicated by 'X')

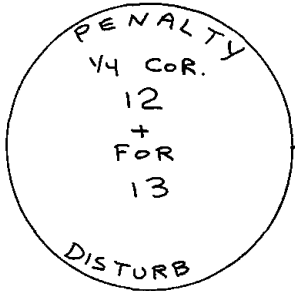
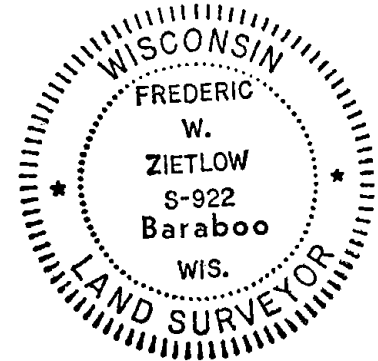
SEAL:

### BASIS FOR MONUMENT LOCATION

(Use reverse side if necessary)

Show info such as: History of corner, with reference to Vol. and pg, dates, surveyor; exact description of monument replaced; if location computed, by taped or EDM traverse; landowner remarks, etc.

FOUND A CONCRETE MONUMENT AND ACCEPTED AS CORNER. VERIFIED BY FINDING STANDING BEARING TREE AS CALLED FOR IN VOL. 2 P. 126 OF ADAMS COUNTY SURVEY RECORDS (CO. SURVEYOR ZENNO WISE 1876). EDM. TRAVERSE.



TOP OF BRASS CAP ON CONCRETE MONUMENT UP 4"

CERTIFIED CORRECT:

*Frederic W. Zietlow*

Registered Land Surveyor

DATE: MAY 14, 1976

### TIE SKETCH

(Show at least four ties)

