

13
SECTION

15
TOWN

05
RANGE

ADAMS COUNTY

COUNTY CORNER NO: 72
ROMPORTOL ID: 41505130020

PUBLIC LAND SURVEY MONUMENT RECORD

TYPE OF MONUMENT: HARRISON

ADAMS COUNTY COORDINATES, NAD 83 (2007)

N. 148751.600

E. 523245.022

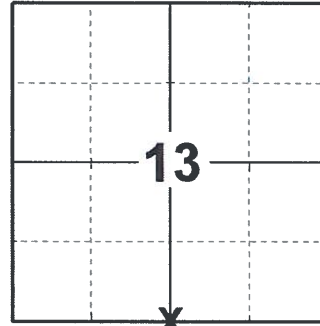
ELEVATION- _____ DATUM _____

FIELD WORK DATE: 07/24/2018

BASIS FOR MONUMENT LOCATION

1975 - PLS 1103 RAN EDM/TRANSIT TRAVERSE AROUND SECTION 19 AND 30 OF TOWN 15 NORTH, RANGE 6 EAST, AND ADJACENT GOVERNMENT CORNERS. FOUND A 1/2" IRON BAR IN THE SEARCH AREA FOR THIS CORNER. THE BAR WAS USED BY MID-STATES ASSOC. IN A SURVEY IN 13-15-5. ACCEPTED SAME AS CORNER. REMONUMENTED WITH A HARRISON MONUMENT AND TIED OUT.

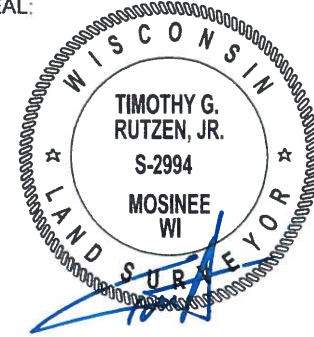
2018 - PLS 2994 FOUND A HARRISON MONUMENT FLUSH WITH THE GROUND SURFACE. FOUND NO EVIDENCE OF ANY OF THE EXISTING TIES OR WITNESSES. ACCEPTED THE HARRISON MONUMENT AS THE BEST EVIDENCE OF THE CORNER LOCATION. SET 4 NEW TIES AND MEASURED TO THE TIES.



LOCATION

(INDICATE CORNER BY "X")

SEAL:



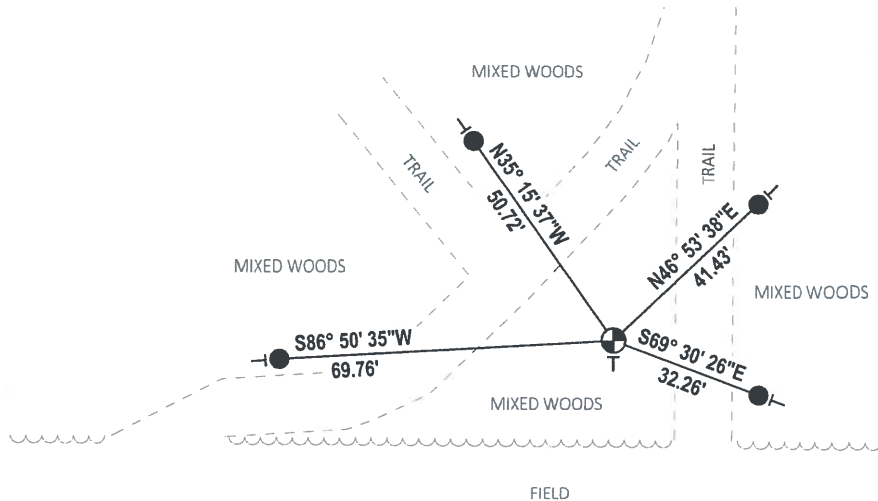
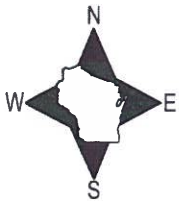
DATA SHOWN HERE ON THIS TIE SHEET IS CORRECT AND COMPLETE TO THE BEST OF MY KNOWLEDGE AND BELIEF.

PROFESSIONAL LAND SURVEYOR

DATE 8-30-18

TIE SKETCH

NOTE: THE CORNER FALLS 21'± NORTH OF THE EDGE OF THE FIELD.



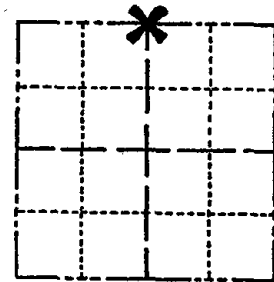
- SET 3/4" x 18" IRON REBAR, 1.50#/FT
- ⊕ FOUND HARRISON MONUMENT
- | VINYL "T" POST

ADAMS COUNTY

Survey Monument Record

TYPE OF MONUMENT: Standard Harrison
 STATE PLANE COORDINATES: N _____
 E _____
 ELEVATION — M.S.L. DATUM: _____
 THETA ANGLE: _____
 FIELD BOOK: _____ PAGE _____

CORNER NO. 835
 SECTION 24
 TOWN 15
 RANGE 6



LOCATION
(Indicated by 'X')

SEAL:



BASIS FOR MONUMENT LOCATION

(Use reverse side if necessary)

Show info such as: History of corner, with reference to Vol. and pg. dates, surveyor; exact description of monument replaced; if location computed, by taped or EDM traverse; landowner remarks, etc.

Ran EDM/transit traverse around Sections 19 and 30 of Town 15 North, Range 6 East, and to adjacent government corners.

Found 1/2" Iron bar with the search area. Bar was used by Mid-States Assoc. in a survey in 13-15-5.

Accepted same as corner and remonumented,

Corner & ties in good condition. 3-31-76 GR-SS

ALL OK KZ-56 1-10-91

ALL OK 2/20/96, JG-ER

OK 2-2-01, JG-SS

ALL OK, 5-12-06-JG

" 01-14-11 SS

CERTIFIED CORRECT:

Dale C. Hagen

Registered Land Surveyor

DATE: December 02, 1975

TIE SKETCH

(Show at least four ties)

