

32
SECTION

16
TOWN

06
RANGE

ADAMS COUNTY

COUNTY CORNER NO: 124
ROMPORTOL ID: 41606320000

PUBLIC LAND SURVEY MONUMENT RECORD

TYPE OF MONUMENT: HARRISON
ADAMS COUNTY COORDINATES, NAD 83 (2007)

N. 164693.459

E. 533944.813

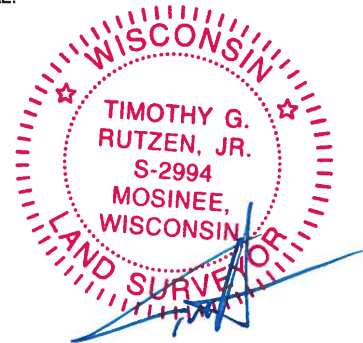
ELEVATION- DATUM

FIELD WORK DATE: 11/15/2017



LOCATION
(INDICATE CORNER BY "X")

SEAL:



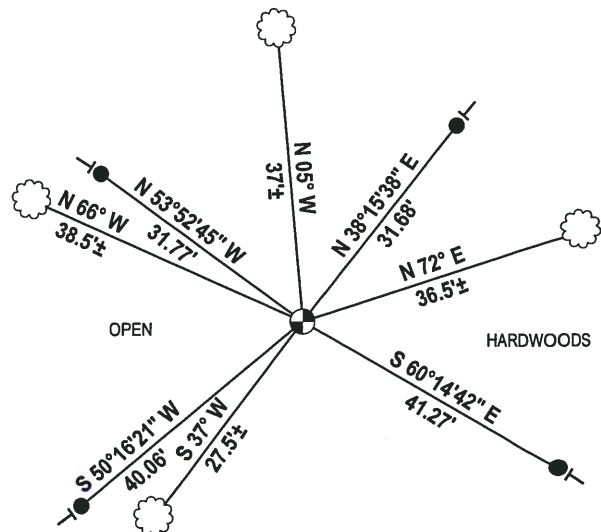
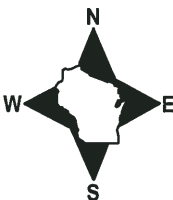
DATA SHOWN HERE ON THIS TIE SHEET IS CORRECT AND COMPLETE TO THE BEST OF MY KNOWLEDGE AND BELIEF.

PROFESSIONAL LAND SURVEYOR

DATE 12-4-17

- TIE SKETCH -

NOTE: ENTER BETWEEN HSE#2995 & HSE#3003 OFF OF 11TH DR. LIGHT METAL POST LINE 50± NORTH OF LARGE TAN METAL BUILDING W/GREEN TRIM GOES DIRECTLY TO THE CORNER.

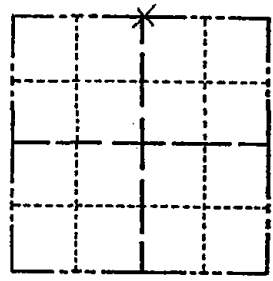


- 3/4" x 18" IRON REBAR SET, 1.50#/FT
- ⊙ HARRISON FOUND
- ┆ VINYL "T" POST
- ☁ WITNESS TREE FOUND

Government Land Corner Certificate

ADAMS County
 TYPE OF MONUMENT: Harrison Monument
 STATE PLANE COORDINATES: N _____
 E _____
 ELEVATION — M.S.L. DATUM: _____
 THETA ANGLE: _____
 FIELD BOOK: 54 PAGE 46
 DRAWN BY: G. Rhinehart

CORNER NO. 4
 SECTION 5
 TOWN 15
 RANGE 6



BASIS FOR MONUMENT LOCATION

Show info such as: History of corner, with reference to Vol. and pg., dates, surveyor; exact description of monument replaced; if location computed, by taped or EDM traverse; landowner remarks, etc. (Use reverse side if necessary)

LOCATION
(Indicated by 'X')

SEAL:



No record of any resurveys of this corner were found.
 No evidence of any monumentation was found at this point.
 This Corner was set half way on line between adjacent section corners.

DATA SHOWN HERE ON
CERTIFIED CORRECT:

Anthony B. Kiedrowski
Registered Land Surveyor

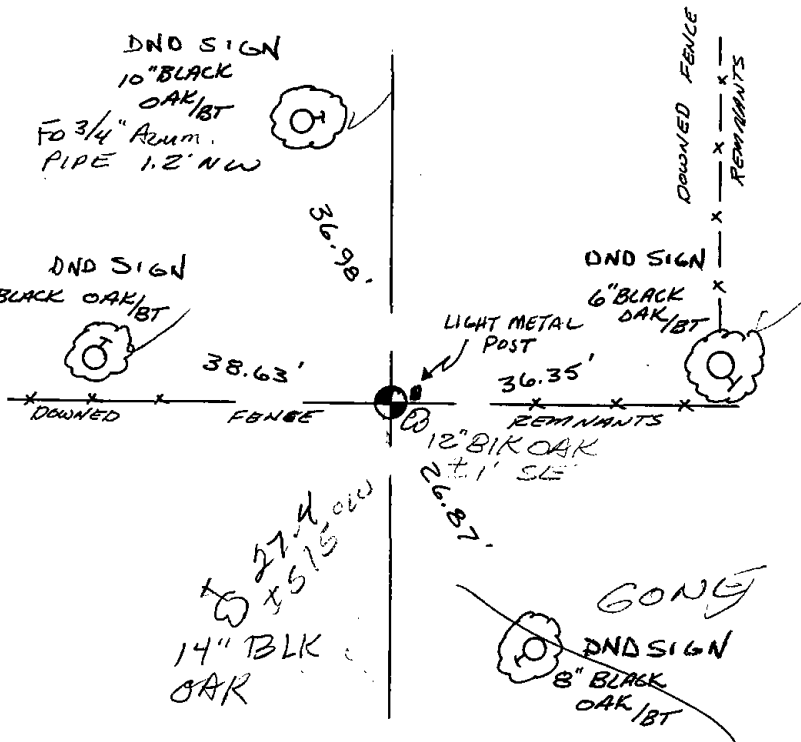
DATE: 12/4/78

TIE SKETCH

Show at least four ties, also fence lines, roads, topo, size and type of witness trees and if off road - best way to arrive at corner.

ENTER FROM ROAD 500'± EAST OF CORNER - MIDWAY BETWEEN OLDER GREEN BUILDINGS ON SOUTH & WHITE MOBILE HOME WITH BLUE TRIM ON NORTH. OLD CAMPBELL LAND CO. LOT MARKERS (STEEL POST / YELLOW SIGN) AT POINT 12" BLACK OAK / BT ON ROAD.

ENTER BETWEEN HSE# 2995 & HSE# 3003 OFF 11TH DR LIGHT METAL POST LINE 50'± NORTH OF LARGE TAN METAL BLDG, GREEN TRIM GOES DIRECTLY TO CORNER



MAINTENANCE RECORD

Date	Init.	Remarks
1-21-86	SR-SS	Acc O.K.
1-10-91	KZ-JG	ANN OK
1-10-96	JG	OK
1-25-01	JG	OK
4-26-06	JG	OK
7-11-11	SS	1 NEW