

## PUBLIC LAND SURVEY MONUMENT RECORD

TYPE OF MONUMENT: HARRISON (BROKEN-TOP)  
ADAMS COUNTY COORDINATES, NAD 83 (2007)

N. 162128.086

E. 552421.982

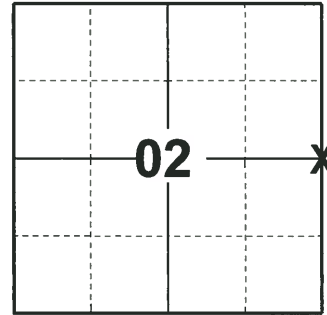
ELEVATION- - - - DATUM - - - -

FIELD WORK DATE: 06/14/2018

### BASIS FOR MONUMENT LOCATION

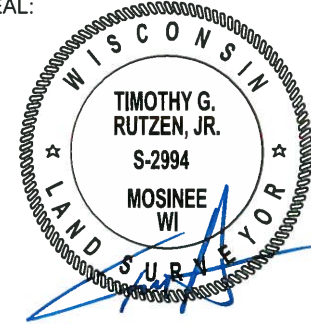
1975 - PLS 1103 FOUND A WHITE PINE BEARING TREE POINTED OUT BY ADJACENT LAND OWNER, ADOLPH BORK. THE BEARING TREE WAS CALLED FOR IN SURVEY BY BARRETT IN 1902 AS RECORDED ON PAGE 6 OF VOLUME 1 OF ADAMS COUNTY SURVEY RECORDS. CALCULATED THE CORNER AT THE RECORDED DISTANCE AND BEARING FROM THE BEARING TREE, SAID LOCATION BEING AN OCCUPIED FENCE CORNER. SET HARRISON AND TIED OUT.

2018 - PLS 2994 FOUND A HARRISON MONUMENT WITH A BROKEN-TOP 12" BELOW THE GROUND SURFACE AND 1 WITNESS. THE MONUMENT AGREES WITH THE EXISTING WITNESS. ACCEPTED THE HARRISON MONUMENT WITH A BROKEN-TOP AS THE CORNER LOCATION. SET 4 NEW TIES AND MEASURED TO THE TIES AND WITNESS.



**LOCATION**  
(INDICATE CORNER BY "X")

SEAL:



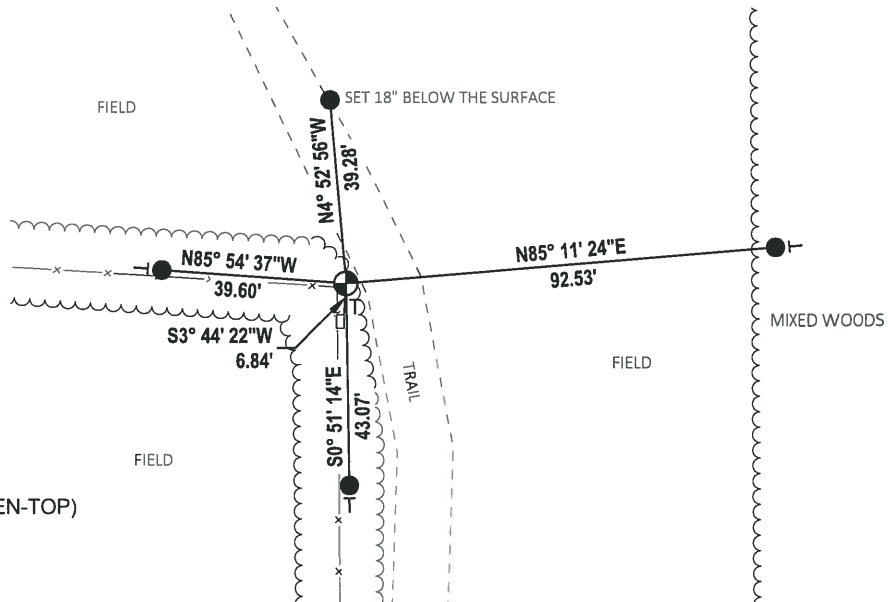
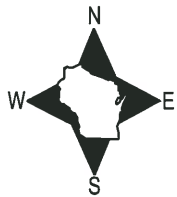
DATA SHOWN HERE ON THIS TIE SHEET IS CORRECT AND COMPLETE TO THE BEST OF MY KNOWLEDGE AND BELIEF.

PROFESSIONAL LAND SURVEYOR

DATE 7-18-18

### - TIE SKETCH

NOTE: THE CORNER FALLS 9± WEST OF THE CENTERLINE OF THE TRAIL.



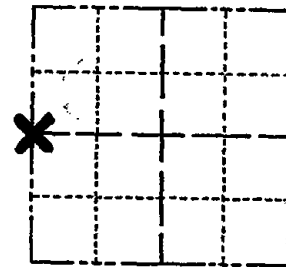
- SET 3/4" x 18" IRON REBAR, 1.50#/FT
- ⊕ FOUND HARRISON MONUMENT (BROKEN-TOP)
- WITNESS POST
- VINYL "T" POST

ADAMS COUNTY

Survey Monument Record

TYPE OF MONUMENT: Standard Harrison  
STATE PLANE COORDINATES: N. \_\_\_\_\_  
E. \_\_\_\_\_  
ELEVATION — M.S.L. DATUM: \_\_\_\_\_  
THETA ANGLE: \_\_\_\_\_  
FIELD BOOK: \_\_\_\_\_ PAGE \_\_\_\_\_

CORNER NO. 202  
SECTION 1  
TOWN 15  
RANGE 6



LOCATION  
(Indicated by 'X')

SEAL:

BASIS FOR MONUMENT LOCATION

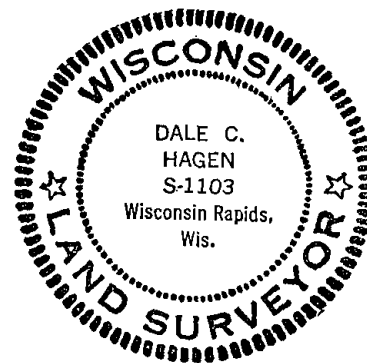
(Use reverse side if necessary)

Show info such as: History of corner, with reference to Vol. and pg, dates, surveyor; exact description of monument replaced; if location computed, by taped or EDM traverse; landowner remarks, etc.

Found White Pine bearing tree pointed out by adjacent land owner, Adolph Bork.

Bearing tree called for in survey by Barrett in 1902 as recorded on Page 6 of Volume 1 of Adams County Survey Records.

Set corner at record distance and bearing from bearing tree, said location being an occupied fence corner.



CERTIFIED CORRECT:

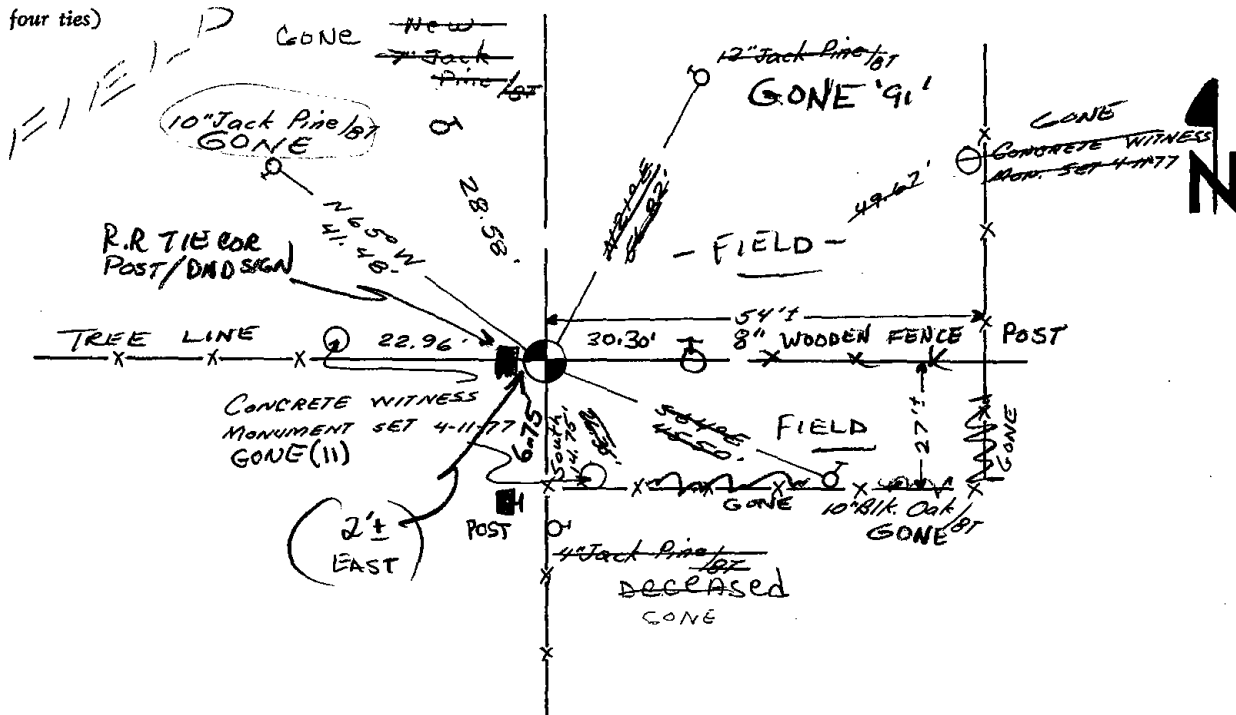
*Dale C. Hagen*  
Registered Land Surveyor

DATE: 4/23/05

CORNER O.K. B-6-76 SK-SS  
TIES O.K. 1-29-80 GR-SS  
ONE GONE COR. OK 3-18-91-JG  
ALL OK CR-UG 2-19-96  
1-NEW TIE, TOP BROKEN OFF MON. 4-28-06-JG

TIE SKETCH

(Show at least four ties)



MAINTENANCE RECORD

Date	Init.	Remarks
12-30-81	SK-BW	COVER O.K
1-29-86	GR-SS	" "
12-21-11	ML	1 GONE, 1 NEW